

NEXT — FJORD YACHTS



Builder: FJORD YACHTS

Year Built: 2022

Model: cruiser

Price: \$525,000 USD

Location: United States

LOA: 38' (11.58mm)

Beam: 11.91

Max Draft: 3' 5" (1.04mm)

Our experienced yacht broker, Andrey Shestakov, will help you choose and buy a yacht that best suits your needs **Next — FJORD YACHTS** from our catalogue. Presently, at Shestakov Yacht Sales Inc., we have a wide variety of yachts available on our sale's list. We also work in close contact with all the big yacht manufacturers from all over the world.

If you would like to buy a yacht **Next — FJORD YACHTS** or would like help answering any questions concerning purchasing, selling or chartering a yacht, please call **+1(954)274-4435**

TABLE OF CONTENTS

TABLE OF CONTENTS	2
SPECIFICATIONS	5
Overview	5
Basic Information	5
Dimensions	5
Speed, Capacities and Weight	5
Accommodations	5
Hull and Deck Information	5
Engine Information	6
PHOTOS	7
Fjord 38 Open	7
Fjord 38 Open	7
38FJORD Intercoastal_1	7
Stern	7
Stern	7
Stern	7
Stern	8
Stern	8
Helm	8
Helm	8
Aft Deck	8
Aft Deck	8
Aft Deck	9
Aft Deck	9
Aft Deck	9
Aft Deck	9
Aft Deck	9
Aft Deck	9

Aft Deck	10
Aft Deck	10
Aft Deck	10
Aft Deck	10
Aft Deck	10
Bow	10
Bow	11
Bow	11
Bow	11
Bow	11
Bow	11
Bow	11
Bow	11
Bow	12
Bow	12
Day Head	12
Bow	12
Day Head	13
Day Head	13
Day Head	13
Day Head	13
Day Head	14
Cabin	14
Cabin	14
Cabin	14
Cabin	15
Cabin	15
Cabin	15
Cabin	15
Cabin	15
Cabin	16

Cabin	16
Cabin	16
Cabin	16
Fjord 38 Open	17
Fjord 38 Open	17
Fjord 38 Open	17
Fjord 38 Open	17
Fjord 38 Open	18
Fjord 38 Open	18
CONTACTS	19
Contact details	19
Telephones	19
Office hours	19
Address	19

SPECIFICATIONS

Overview

Known for her comfortable handling and excellent performance; the Fjord 38 Open is the perfect day cruiser. Some of her highlights include:

- Low engine hours (125)
- Joystick Docking
- T-Top
- Pilot / Co-pilot chair
- GRP deck, isophtalic gelcoat

Basic Information

Category: cruiser

Model Year: 2022

Year Built: 2022

Country: United States

Dimensions

LOA: 38' (11.58mm)

Beam: 11.91

Max Draft: 3' 5" (1.04mm)

Speed, Capacities and Weight

Water Capacity: 44 Gallons

Fuel Capacity: 132 Gal Gallons

Accommodations

Total Cabins: 1

Hull and Deck Information

Hull Material: Fiberglass

Engine Information

Engines: 2

Manufacturer: Volvo Penta

Engine Type: Inboard

Fuel Type: Diesel

PHOTOS

Fjord 38 Open



Fjord 38 Open



38FJORD Intercoastal_1



Stern



Stern



Stern



Stern



Stern



Helm



Helm



Aft Deck



Aft Deck



Aft Deck



Aft Deck



Aft Deck



Aft Deck



Aft Deck



Aft Deck



Aft Deck



Aft Deck



Aft Deck



Aft Deck



Aft Deck



Bow



Bow



Bow



Bow



Bow



Bow



Bow



Bow



Bow



Day Head

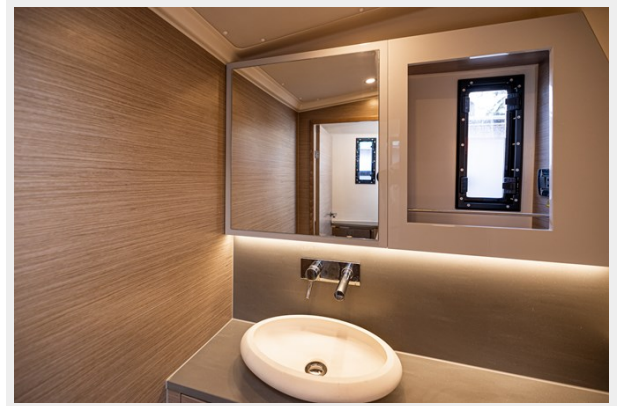
Bow



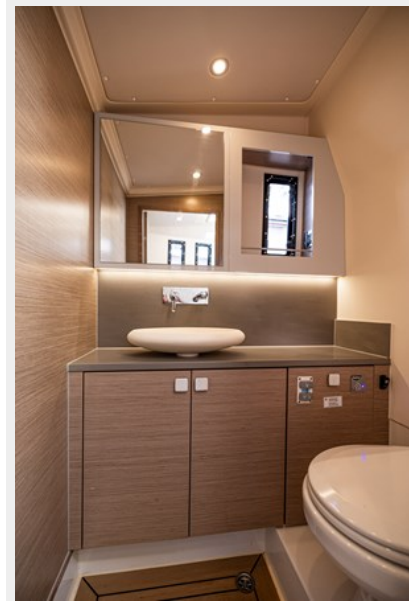
Day Head



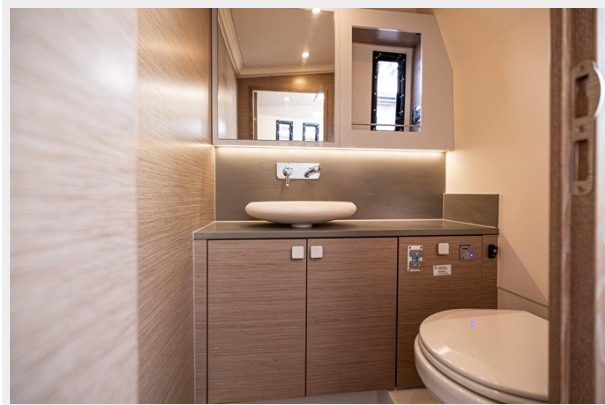
Day Head



Day Head



Day Head



Day Head



Cabin



Cabin



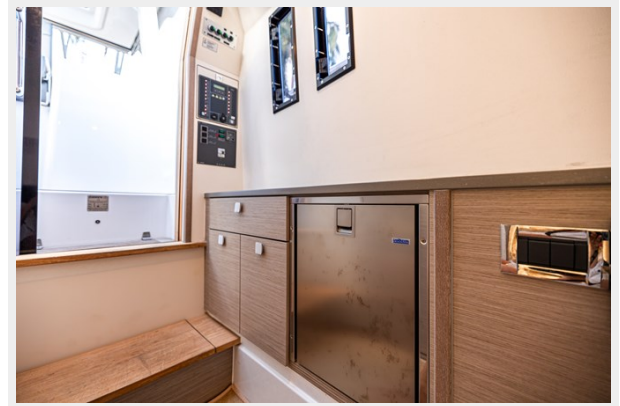
Cabin



Cabin



Cabin



Cabin



Cabin



Cabin



Cabin



Cabin



Cabin



Fjord 38 Open



Fjord 38 Open



Fjord 38 Open



Fjord 38 Open



Fjord 38 Open



Fjord 38 Open



CONTACTS

Andrey Shestakov, leading yacht broker of the sales department of Shestakov Yacht Sales Inc. Shestakov Yacht Sales Inc., the official representative of the Miami/Fort Lauderdale FL headquarters.

Contact details

Email: andrey@shestakovyachtsales.com

Web: shestakovyachtsales.com/en/

Telephones

USA: +1(954)274-4435

Office hours

Monday – Saturday: **9:00 - 21:00** EDT

Sunday: **closed**

Address



Harbour Towne Marina, 850 NE 3rd St,
STE 213, Dania, FL 33004