

1930 BLANCHARD LAKE UNION DREAMBOAT — BLANCHARD



Судостроитель: BLANCHARD

Год постройки: 1930

Модель: Boats

Цена: \$129,900 USD

Местонахождение: United States

Длина общая: 36' (10.97mm)

Ширина: 9.41

Крейс. скорость: 8 Knots Kts. (9 MPH)

Купить **1930 Blanchard Lake Union Dreamboat — BLANCHARD** а также выбрать подходящую вам яхту из нашего **каталога яхт** вам поможет опытный яхтенный брокер Андрей Шестаков. На сегодняшний день компания **Shestakov Yacht Sales Inc.** имеет большое количество яхт в **собственном списке продаж**, а также тесно сотрудничает со всеми крупными яхтенными производителями по всему миру.

Для того чтобы купить яхту **1930 Blanchard Lake Union Dreamboat — BLANCHARD** а также проконсультироваться по любому вопросу связанному с покупкой, продажей, чартером яхт позвоните по телефону **+7(918)465-66-44**.

ОГЛАВЛЕНИЕ

ОГЛАВЛЕНИЕ	2
ХАРАКТЕРИСТИКИ	3
Обзор	3
Основная информация	4
Размеры	4
Скорость, вместимость и масса	4
Размещение	4
Информация о двигателе	4
ФОТОГРАФИИ	5
КОНТАКТЫ	11
Контактная информация	11
Телефоны	11
Время работы	11
Адрес	11

ХАРАКТЕРИСТИКИ

Обзор

1930 Blanchard Lake Union Dreamboat MER-NA is a 36-foot, Raised Deck Cruiser, built by the Blanchard Boat Company, Seattle, Washington. For more than six decades beginning in 1907, the N.J. Blanchard Boat Company produced some of the finest motor yachts, sailboats, and small tenders to emerge from the Pacific Northwest..... including two dozen "Lake Union Dreamboats" that became a trademark of the company. MER-NA was launched in 1930 (hull #25) and is the last in the series of the Blanchard "Dreamboats". Purchased by her current owner and brought to Lake Minnetonka twenty years ago, she has been under our care, including several extensive reconstruction and upgrade rounds of maintenance, further detailed below. Priced at \$129,900.

Specifications, MER-NA
 Classification Documented Motor Vessel, #230-292
 Year 1930
 Builder N.J. Blanchard Boat Works, Seattle
 Model Standardized Cruiser ("Lake Union Dreamboat")
 Hull Number 25 in series (last one built)
 Length Overall 36'-0" (Waterline length also 36'-0")
 Maximum Beam 9'-6"
 Draft 3.5 feet
 Height 17' 2" from waterline to mast light (bridge clearance)
 Power Yanmar 4JH2E, 4-cylinder diesel, 51 horsepower, 4267 hours
 Cruising Speed 6-8 knots, maximum 9 knots
 Cruising RPM 2,100-2,600 (comfortable)
 Speed / RPM 5.1 knots @ 1500, 6.4 @ 2000, 7.7 @ 2500, 8.8 @ 3000
 Fuel Consumption 0.5 gallon per hour at slow cruise (2100 rpm/6 knots); maximum 1.5 gph @ 3300rpm
 Fuel Tanks New aluminum tank (August, 2001) 45-gallons, new fiber 23-gallon (Jan 2004). Total capacity 68 gal.
 Batteries Two 12-volt starting batteries plus three 12-volt "house" batteries rated at 360Ah. Xantrax RV2012 charger / 1500W inverter.
 Water Tank Stainless steel, 75 gallons, under forward berth
 Pumps Brass water pumps (original) in galley and head
 Heat Red Dot R-290, forced-air heater in pilothouse and main cabin (2000 BTU, works off engine heat exchanger).
 Stove Restored (original) Sound-brand cast-iron galley stove, stainless oven, burns kerosene, 1 qt./hr., 15 gal. tank in bow.
 Hot water 10-gallon stainless tank heated by galley stove
 Lighting 12-volt original crystal fixtures; new wiring throughout (2004).
 Water closet SeaEra, 12v. macerating with 24 gal. waste water tank.
 Fathometer Ross 240'
 GPS Garmin, 3010C, color, moving-map, chartplotter with GDL 30A, marine (XM WX) weather satellite receiver
 VHF ICOM, IC-M59 (new 2001)
 Stereo XM Satellite
 AM/FM radio with tape deck and 6-CD changer
 Horns Air and electric
 Planking Western Red Cedar
 Framing White Oak, 1-3/8" x 1-1/4" bent frames
 Deck beams 1-1/8" x 2-1/4," Douglas Fir
 Decking Tongue-and-groove cedar, covered with painted canvas
 Bilge pumps Rule automatic, 1" discharge; Par automatic, 1" discharge.
 Steering Cable
 Anchors Bruce anchor, 50' chain, 250' line
 Storm anchor (larger Danforth type), 50' chain, 250' line
 Safety Four dry-chemical fire extinguishers, 2-1/2-5 lb.
 Dinghy Original, 7'-6" lapstrake, Western Red Cedar with White Oak frames, on pilothouse roof (mast and boom are used to lower and retrieve skiff).
 Searchlight Two: one 12-volt, pilothouse roof, and one 12-volt remote control on bow sprint (removable)
 Life jackets Eight life jackets, one ring buoy
 Clock, Barometer One each, in main cabin
 Windshield wipers Two wipers and one windshield fan
 Refrigeration Large (10 cu. ft.) stainless-steel icebox w/three access doors in pilothouse. Alder-Barbour compressor/evaporator provides refrigeration drawing only 5 amps.
 Miscellaneous Original crystal "Mer-Na" glassware, Burgundy mohair upholstery throughout- All new through-hulls (2004)- Electrical system completely rewired and refused

(2004)- galvanic isolator / inverter / charger- Hull completely stripped (2007). The forward keel and garboards were found rotten and were replaced. New ribs were sistered to the forward 4 stations. All other wood was in excellent shape and is documented with photos. The entire hull was refastened with 4000 hot-dipped, galvanized screws and each head sealed with 2-part West epoxy. Wood below the waterline was wadded & caulked. The entire boat was repainted with 2 coats primer and 3 top coats. - Transom completely rebuilt 2015.

Основная информация

Тип судна: Boats

Модельный год: 1930

Год постройки: 1930

Страна: United States

Размеры

Длина общая: 36' (10.97m)

Ширина: 9.41

Скорость, вместимость и масса

Крейс. скорость: 8 Knots Kts. (9 MPH)

Вместимость воды: 75 Gallons

Вместимость сточного бака: 24 Gal
Gallons

Объем топливного бака: 68 Gal
Gallons

Размещение

Всего коек: 3

Всего ком. состава: 1

Информация о двигателе

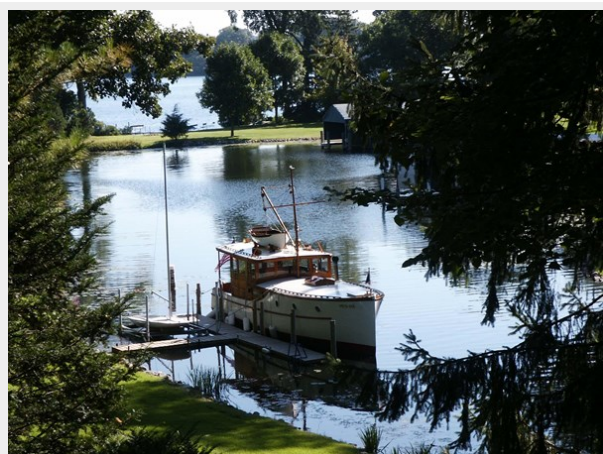
Двигатели: 1

Производитель: Yanmar

Тип двигателя: Inboard

Тип топлива: Diesel

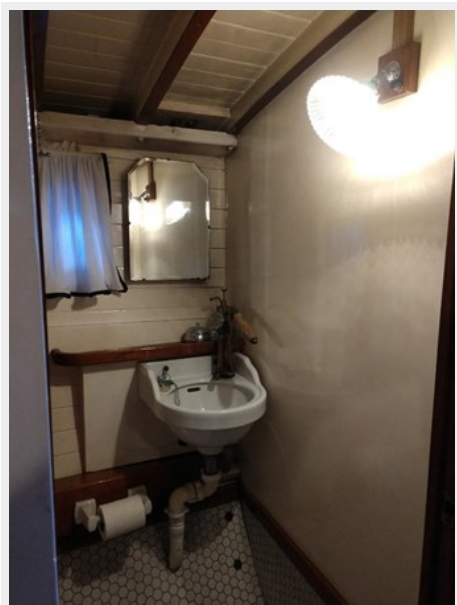
ФОТОГРАФИИ













КОНТАКТЫ

Андрей Шестаков (Andrey Shestakov) – ведущий яхтенный брокер отдела продаж яхт и судов компании Shestakov Yacht Sales Inc. Официальный представитель Shestakov Yacht Sales Inc. для русскоговорящих клиентов в центральном офисе компании в Майами/Форт Лодердейл/Флорида/США.

Контактная информация

Email: andrey@shestakovyachtsales.com

Web: shestakovyachtsales.com

Телефоны

Краснодарский край: **+7(918)465-66-44**

США, Майами, Флорида: **+1(954)274-4435**

Время работы

Понедельник – Суббота: **9:00 - 21:00**
EDT

Воскресенье: **Закрито**

Адрес



Harbour Towne Marina, 850 NE 3rd St,
STE 213, Dania, FL 33004