

## CHIMA — ALEN YACHT



**Builder:** ALEN YACHT

**Year Built:** 2015

**Model:** Motor Yacht

**Price:** €925,000 EUR

**Location:** Italy

**LOA:** 55' 2" (16.8mm)

**Beam:** 15.74

**Max Draft:** 2' 9" (0.82mm)

**Cruise Speed:** 25 Knots Kts. (29 MPH)

**Max Speed:** 32 Knots Kts. (37 MPH)

Our experienced yacht broker, Andrey Shestakov, will help you choose and buy a yacht that best suits your needs **CHIMA — ALEN YACHT** from our catalogue. Presently, at Shestakov Yacht Sales Inc., we have a wide variety of yachts available on our sale's list. We also work in close contact with all the big yacht manufacturers from all over the world.

If you would like to buy a yacht **CHIMA — ALEN YACHT** or would like help answering any questions concerning purchasing, selling or chartering a yacht, please call **+1(954)274-4435**

# TABLE OF CONTENTS

TABLE OF CONTENTS	2
SPECIFICATIONS	3
Overview	3
Basic Information	3
Dimensions	3
Speed, Capacities and Weight	4
Accommodations	4
Hull and Deck Information	4
Engine Information	4
PHOTOS	5
CONTACTS	10
Contact details	10
Telephones	10
Office hours	10
Address	10

# SPECIFICATIONS

## Overview

Introducing M/Y CHIMA, a pristine example of the Alen Yacht 55, delivered in 2015 and meticulously maintained by a discerning owner who has ensured every detail is kept in perfect condition. Priced at EUR 925,000, VAT paid, this yacht is an excellent opportunity for those seeking a blend of classic design and modern functionality. CHIMA boasts a timeless, traditional design that emphasizes practicality and safety. The yacht features a center console and walk-around deck, complemented by deep bulwarks that ensure guests feel secure and comfortable, being 'in' the deck rather than 'on' it. This layout makes CHIMA ideal for family and friends to gather, whether navigating, relaxing, or engaging in conversation around the extendable dining table adjacent to the open kitchen. With only 255 engine hours and the owner having slept onboard just once, CHIMA is virtually in a like-new state. She cruises comfortably at 25 knots and can reach a maximum speed of 32 knots. Her performance credentials are matched by her luxurious amenities and structural integrity. CHIMA accommodates guests in two cabins—one double and one twin. Up to 8 guests can comfortably dine outdoors, enjoying the breeze and views. At the helm, CHIMA is equipped with the latest navigation systems ensuring safe and efficient voyages. A hidden, custom-made anchor mechanism is operated at the touch of a button, showcasing the yacht's blend of traditional charm and modern technology. The aft features a versatile hydraulic gangway that doubles as a swim ladder, adjacent to a luxurious sunbed. The yacht has been upgraded and serviced annually without regard to cost, reflecting the owner's commitment to excellence and detail. This ongoing attention guarantees CHIMA remains in superb condition, ready to deliver unmatched experiences on the water.

## Basic Information

Category: Motor Yacht	Model Year: 2015
Year Built: 2015	Country: Italy

## Dimensions

LOA: 55' 2" (16.8mm)	Beam: 15.74
Max Draft: 2' 9" (0.82mm)	

---

## Speed, Capacities and Weight

---

**Cruise Speed:** 25 Knots Kts. (29 MPH)

**Cruise Speed Range:** 280

**Max Speed:** 32 Knots Kts. (37 MPH)

**Water Capacity:** 500 Gallons

**Fuel Capacity:** 528.34 Gal Gallons

**Fuel Consumption:** 50.19 Gal Gallons

---

## Accommodations

---

**Total Cabins:** 2

**Total Berths:** 4

**Sleeps:** 4

**Total Heads:** 1

**Crew Cabin:** 1

**Crew Berths:** 1

---

## Hull and Deck Information

---

**Hull Material:** GRP

**Deck Material:** Teak

**Hull Configuration:** Planing

**Hull Color:** White

---

## Engine Information

---

**Engines:** 2

**Manufacturer:** Volvo Penta

**Engine Type:** Inboard

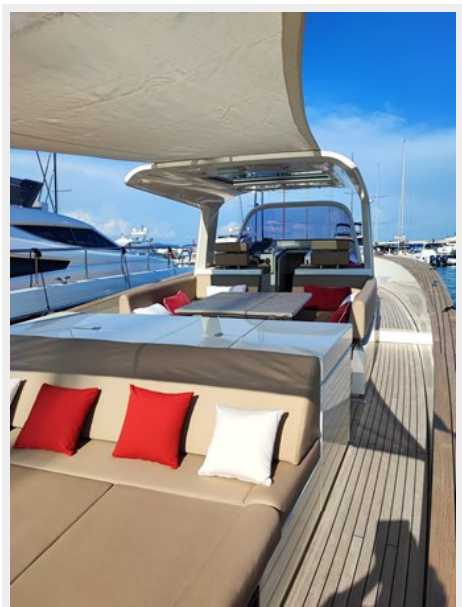
**Fuel Type:** Diesel

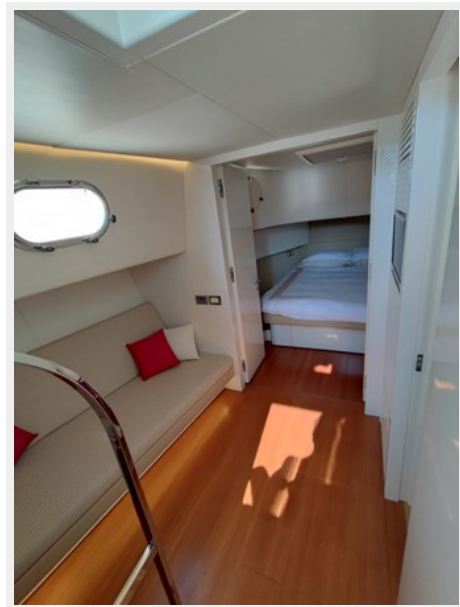
# PHOTOS



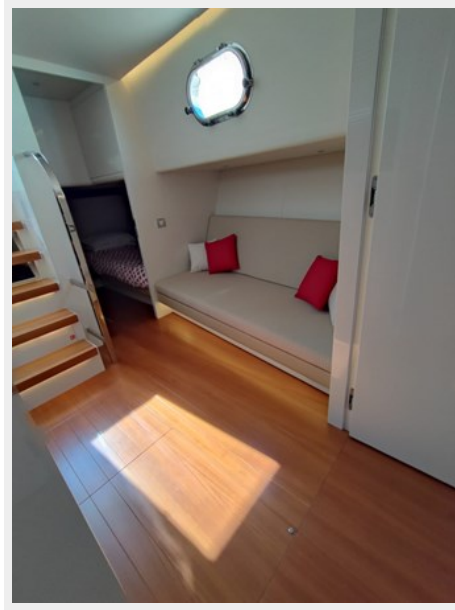












# CONTACTS

---

Andrey Shestakov, leading yacht broker of the sales department of Shestakov Yacht Sales Inc. Shestakov Yacht Sales Inc., the official representative of the Miami/Fort Lauderdale FL headquarters.

## Contact details

---

Email: **andrey@shestakovyachtsales.com**

Web: [shestakovyachtsales.com/en/](http://shestakovyachtsales.com/en/)

## Telephones

---

USA: **+1(954)274-4435**

## Office hours

---

Monday – Saturday: **9:00 - 21:00 EDT**

Sunday: **closed**

## Address

---



Harbour Towne Marina, 850 NE 3rd St,  
STE 213, Dania, FL 33004