

KNOT DREAMIN — BENETEAU



Builder: BENETEAU

Year Built: 2013

Model: trawler

Price: \$469,000 USD

Location: United States

LOA: 44' (13.41mm)

Beam: 13.91

Max Draft: 3' 5" (1.04mm)

Our experienced yacht broker, Andrey Shestakov, will help you choose and buy a yacht that best suits your needs **KNOT DREAMIN — BENETEAU** from our catalogue. Presently, at Shestakov Yacht Sales Inc., we have a wide variety of yachts available on our sale's list. We also work in close contact with all the big yacht manufacturers from all over the world.

If you would like to buy a yacht **KNOT DREAMIN — BENETEAU** or would like help answering any questions concerning purchasing, selling or chartering a yacht, please call **+1(954)274-4435**

TABLE OF CONTENTS

TABLE OF CONTENTS	2
SPECIFICATIONS	5
Overview	5
Basic Information	5
Dimensions	5
Speed, Capacities and Weight	5
Accommodations	5
Hull and Deck Information	5
Engine Information	6
PHOTOS	7
COCKPIT	7
COCKPIT	7
COCKPIT	7
COCKPIT	7
SALON	8
SALON	8
SALON	8
SALON	8
SALON / GALLEY	8
GALLEY	8
GALLEY	9
GALLEY	9
LOWER HELM	9
LOWER HELM	9
MASTER CABIN	9
MASTER CABIN	9
MASTER HEAD	10
MASTER HEAD	10

GUEST CABIN	10
GUEST CABin	10
GUEST / DAY HEAD	11
GUEST / DAY HEAD	11
FLYBRIDGE	11
FLYBRIDGE / HELM	11
FLYBRIDGE / HELM	11
FLYBRIDGE	11
FLYBRIDGE	12
FLYBRIDGE	12
FLYBRIDGE	12
BOW	12
BOW	12
BOW	12
BOW	13
ENGINE ROOM	13
ENGINE ROOM	13
ENGINE ROOM	13
ENGINE ROOM	13
ENGINE ROOM	13
SWIM PLATFORM	14
OTHER PROFILE	14
OTHER PROFILE	14
OTHER PROFILE	14
AFT VIEW	14
CONTACTS	15
Contact details	15
Telephones	15
Office hours	15

Address

15

SPECIFICATIONS

Overview

KNOT DREAMIN is a well-loved and well-maintained vessel, particularly suited for those who value comfort, style, and seaworthiness. The Beneteau Swift Trawler Series is indeed known for blending the comfort and style of a Trawler with the speed of a motoryacht, making it an appealing option for those who want versatility in their cruising experience!

Basic Information

Category: trawler

Model Year: 2013

Year Built: 2013

Country: United States

Dimensions

LOA: 44' (13.41mm)

Beam: 13.91

Max Draft: 3' 5" (1.04mm)

Speed, Capacities and Weight

Water Capacity: 170 Gallons

Holding Tank: 32 Gal Gallons

Fuel Capacity: 370 Gal Gallons

Accommodations

Total Cabins: 2

Hull and Deck Information

Hull Material: Fiberglass

Deck Material: Teak

Hull Configuration: Modified V-Hull

Engine Information

Engines: 2

Manufacturer: Volvo Penta

Engine Type: Inboard

Fuel Type: Diesel

PHOTOS

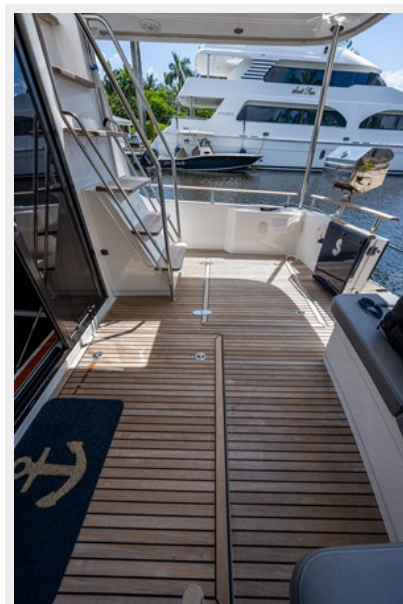
COCKPIT



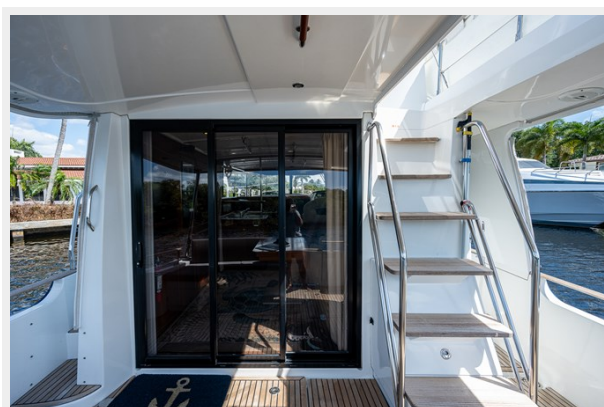
COCKPIT



COCKPIT



COCKPIT



SALON



SALON



SALON



SALON



SALON / GALLEY



GALLEY



GALLEY



GALLEY



LOWER HELM



LOWER HELM



MASTER CABIN



MASTER CABIN



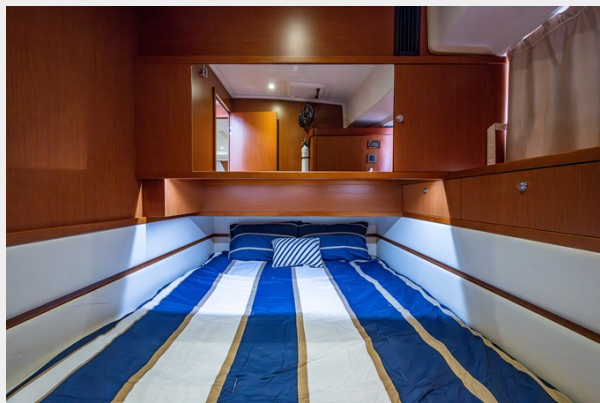
MASTER HEAD



MASTER HEAD



GUEST CABIN



GUEST CABIn



GUEST / DAY HEAD



GUEST / DAY HEAD



FLYBRIDGE



FLYBRIDGE / HELM



FLYBRIDGE / HELM



FLYBRIDGE



FLYBRIDGE



FLYBRIDGE



FLYBRIDGE



BOW



BOW



BOW



BOW



ENGINE ROOM



ENGINE ROOM



ENGINE ROOM



ENGINE ROOM



ENGINE ROOM



SWIM PLATFORM



OTHER PROFILE



OTHER PROFILE



OTHER PROFILE



AFT VIEW



CONTACTS

Andrey Shestakov, leading yacht broker of the sales department of Shestakov Yacht Sales Inc. Shestakov Yacht Sales Inc., the official representative of the Miami/Fort Lauderdale FL headquarters.

Contact details

Email: andrey@shestakovyachtsales.com

Web: shestakovyachtsales.com/en/

Telephones

USA: +1(954)274-4435

Office hours

Monday – Saturday: **9:00 - 21:00** EDT

Sunday: **closed**

Address



Harbour Towne Marina, 850 NE 3rd St,
STE 213, Dania, FL 33004