

ICE COLD POP — PRINCESS VIKING



Builder: PRINCESS VIKING

Year Built: 2014

Model: cruiser

Price: \$714,000 USD

Location: United States

LOA: 52' (15.85mm)

Beam: 14.58

Min Draft: 4' (1.22mm)

Max Draft: 3' 9" (1.14mm)

Cruise Speed: 28 Knots Kts. (32 MPH)

Our experienced yacht broker, Andrey Shestakov, will help you choose and buy a yacht that best suits your needs **Ice Cold Pop — PRINCESS VIKING** from our catalogue. Presently, at Shestakov Yacht Sales Inc., we have a wide variety of yachts available on our sale's list. We also work in close contact with all the big yacht manufacturers from all over the world.

If you would like to buy a yacht **Ice Cold Pop — PRINCESS VIKING** or would like help answering any questions concerning purchasing, selling or chartering a yacht, please call **+1(954)274-4435**

TABLE OF CONTENTS

TABLE OF CONTENTS	2
SPECIFICATIONS	3
Overview	3
Basic Information	3
Dimensions	3
Speed, Capacities and Weight	3
Accommodations	4
Hull and Deck Information	4
Engine Information	4
PHOTOS	5
CONTACTS	9
Contact details	9
Telephones	9
Office hours	9
Address	9

SPECIFICATIONS

Overview

This Viking Princess was built to US Specification and has been continuously updated by her knowledgeable owners. You will find this Princess with shaft drive in immaculate condition, fully serviced and cruise ready. Powered by low hour, dependable C-12 Caterpillars, Ice Cold Pop is a rare find with traditional shafts (no pods). Stored in a climate controlled building throughout the COVID pandemic, Ice Cold Pop is ready to roll. If you are looking for trouble free operation with easy maintenance shaft drive this Cat powered 52 Viking Princess is the choice.

Major Updates: Detail topsides 2024 Engines, gears and Gen Set serviced 2023Caterpillar 1K service completed 2022 Gears fully serviced 2022Generator fully serviced 2022Air conditioner replaced 2022Interior updated 2022 Custom cabinetry 2019 Windows professionally sealed 2019Windows professionally tinted 2019 Tender replaced 2019

Basic Information

Category: cruiser

Sub Category: Express

Model Year: 2014

Year Built: 2014

Country: United States

Dimensions

LOA: 52' (15.85mm)

Beam: 14.58

Min Draft: 4' (1.22mm)

Max Draft: 3' 9" (1.14mm)

Speed, Capacities and Weight

Cruise Speed: 28 Knots Kts. (32 MPH)

Water Capacity: 80 Gallons

Holding Tank: 42 Gal Gallons

Fuel Capacity: 440 Gal Gallons

Accommodations

Total Cabins: 2

Total Heads: 2

Hull and Deck Information

Hull Material: Fiberglass

Engine Information

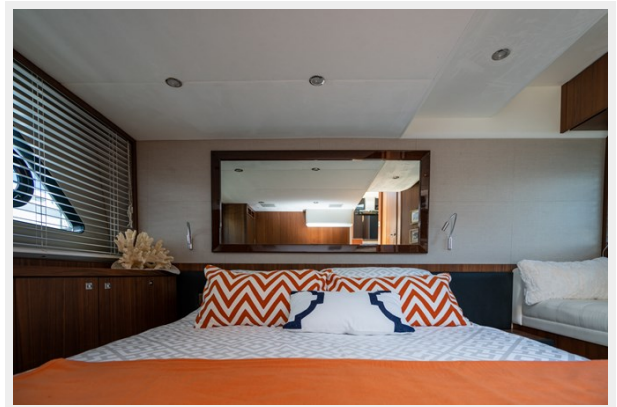
Engines: 2

Manufacturer: Caterpillar

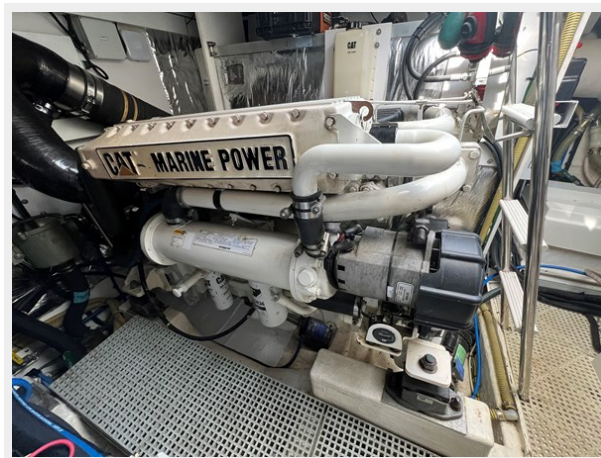
Fuel Type: Diesel

PHOTOS









CONTACTS

Andrey Shestakov, leading yacht broker of the sales department of Shestakov Yacht Sales Inc. Shestakov Yacht Sales Inc., the official representative of the Miami/Fort Lauderdale FL headquarters.

Contact details

Email: andrey@shestakovyachtsales.com

Web: shestakovyachtsales.com/en/

Telephones

USA: +1(954)274-4435

Office hours

Monday – Saturday: **9:00 - 21:00** EDT

Sunday: **closed**

Address



Harbour Towne Marina, 850 NE 3rd St,
STE 213, Dania, FL 33004