

# 1962 CHRIS-CRAFT CONSTELLATION — CHRIS-CRAFT



**Builder:** CHRIS-CRAFT

**LOA:** 45' 6" (13.87mm)

**Year Built:** 1962

**Beam:** 13

**Model:** Boats

**Price:** \$129,900 USD

**Location:** United States

Our experienced yacht broker, Andrey Shestakov, will help you choose and buy a yacht that best suits your needs 1962 Chris-Craft Constellation — CHRIS-CRAFT from our catalogue. Presently, at Shestakov Yacht Sales Inc., we have a wide variety of yachts available on our sale's list. We also work in close contact with all the big yacht manufacturers from all over the world.

If you would like to buy a yacht 1962 Chris-Craft Constellation — CHRIS-CRAFT or would like help answering any questions concerning purchasing, selling or chartering a yacht, please call +1(954)274-4435

---

# TABLE OF CONTENTS

---

|                              |    |
|------------------------------|----|
| TABLE OF CONTENTS            | 2  |
| SPECIFICATIONS               | 3  |
| Overview                     | 3  |
| Basic Information            | 3  |
| Dimensions                   | 3  |
| Speed, Capacities and Weight | 3  |
| Accommodations               | 3  |
| Engine Information           | 3  |
| PHOTOS                       | 4  |
| CONTACTS                     | 12 |
| Contact details              | 12 |
| Telephones                   | 12 |
| Office hours                 | 12 |
| Address                      | 12 |

---

# SPECIFICATIONS

---

## Overview

---

1962 Chris-Craft Constellation This Constellation is a real gem! Bottom replaced, original engines and transmissions freshly rebuilt, new generator, complete new modern electrical system, including solar charging on cabin roof, all professionally executed. This boat needs nothing, exactly the condition you'd want to buy. Tender shown on stern davits is included.

## Basic Information

---

**Category:** Boats

**Model Year:** 1962

**Year Built:** 1962

**Country:** United States

## Dimensions

---

**LOA:** 45' 6" (13.87mm)

**Beam:** 13

## Speed, Capacities and Weight

---

**Water Capacity:** 80 Gallons

**Fuel Capacity:** 275 Gal Gallons

## Accommodations

---

**Total Cabins:** 2

**Total Heads:** 2

## Engine Information

---

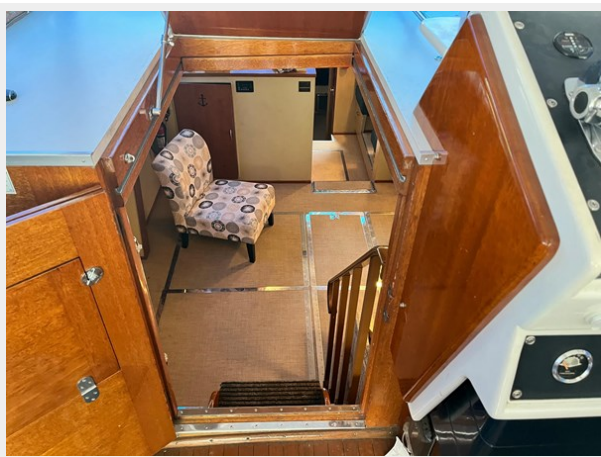
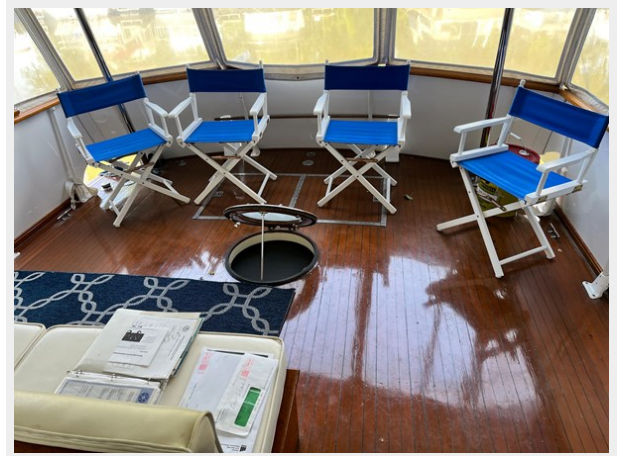
**Engines:** 2

**Manufacturer:** Chris Craft

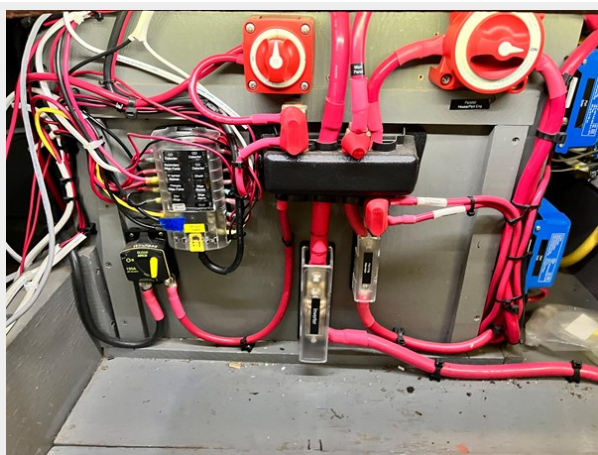
**Engine Type:** Inboard

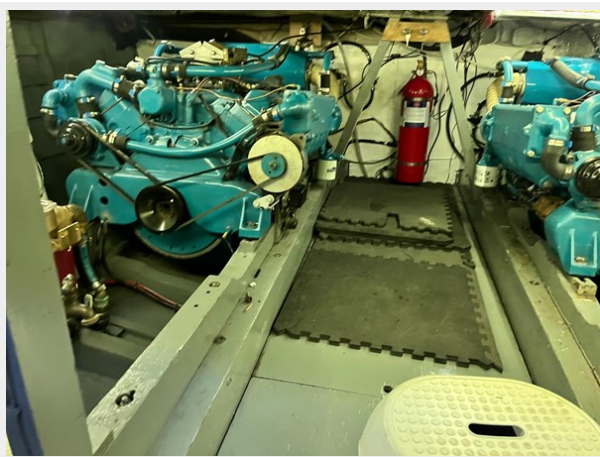
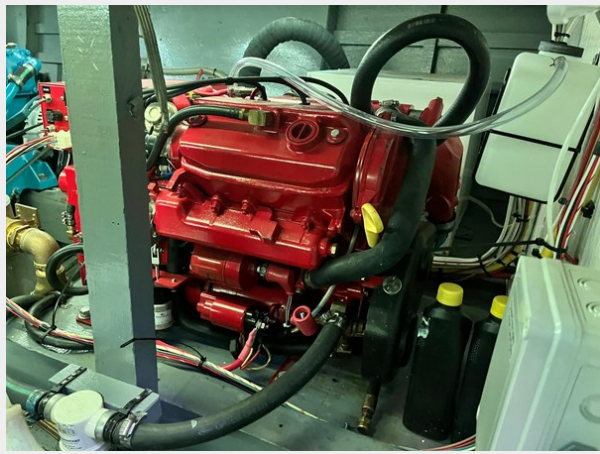
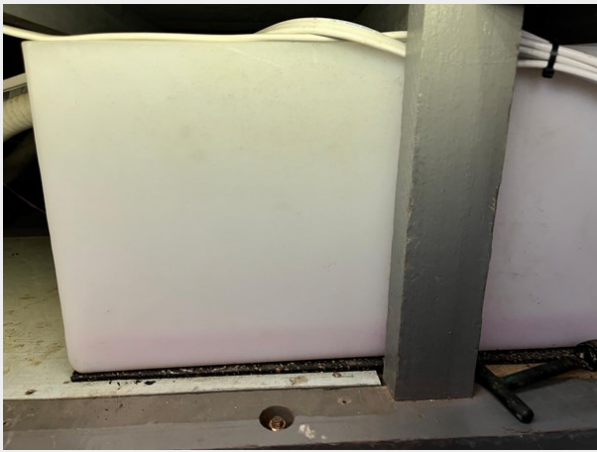
**Fuel Type:** Gas

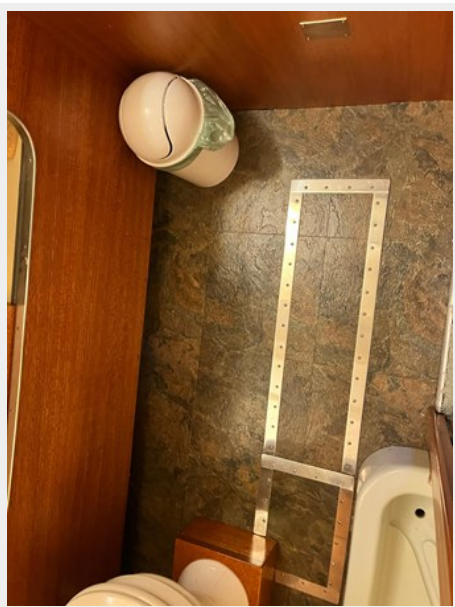
# PHOTOS



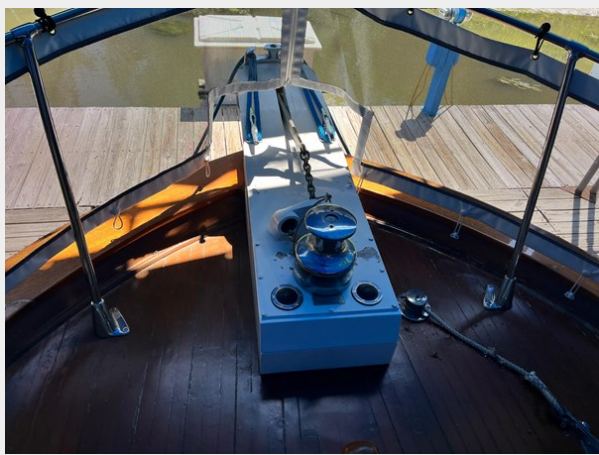
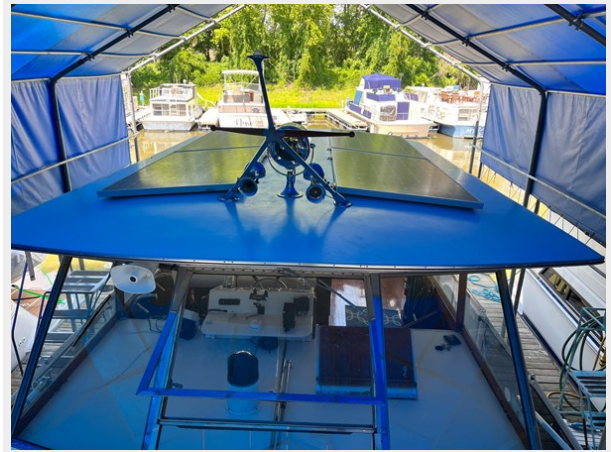
















# CONTACTS

---

Andrey Shestakov, leading yacht broker of the sales department of Shestakov Yacht Sales Inc. Shestakov Yacht Sales Inc., the official representative of the Miami/Fort Lauderdale FL headquarters.

## Contact details

---

Email: [andrey@shestakovyachtsales.com](mailto:andrey@shestakovyachtsales.com)

Web: [shestakovyachtsales.com/en/](http://shestakovyachtsales.com/en/)

## Telephones

---

USA: +1(954)274-4435

## Office hours

---

Monday – Saturday: **9:00 - 21:00** EDT

Sunday: **closed**

## Address

---



Harbour Towne Marina, 850 NE 3rd St,  
STE 213, Dania, FL 33004