

PRINCESS OF TIDES — K & M YACHTBUILDERS



Builder: K & M YACHTBUILDERS

Year Built: 2012

Model: Cruising Sailboat

Price: PRICE ON APPLICATION

Location: Netherlands

LOA: 49' 1" (14.96mm)

Beam: 14.43

Max Draft: 7' 1" (2.15mm)

Cruise Speed: 7.5 Knots Kts. (9 MPH)

Max Speed: 8.2 Knots Kts. (9 MPH)

Our experienced yacht broker, Andrey Shestakov, will help you choose and buy a yacht that best suits your needs **Princess of Tides — K & M YACHTBUILDERS** from our catalogue. Presently, at Shestakov Yacht Sales Inc., we have a wide variety of yachts available on our sale's list. We also work in close contact with all the big yacht manufacturers from all over the world.

If you would like to buy a yacht **Princess of Tides — K & M YACHTBUILDERS** or would like help answering any questions concerning purchasing, selling or chartering a yacht, please call **+1(954)274-4435**

TABLE OF CONTENTS

TABLE OF CONTENTS	2
SPECIFICATIONS	4
Overview	4
Basic Information	4
Dimensions	4
Speed, Capacities and Weight	4
Accommodations	4
Hull and Deck Information	5
Engine Information	5
PHOTOS	6
Layout	6
IMG_4970	6
_DSC0285	6
IMG_5069	6
_DSC0268	6
IMG_0301	6
IMG_0302	7
IMG_4966	7
_DSC0281	7
IMG_5071	7
IMG_4972	7
zeilen in Engeland 08-08-2013 206	7
IMG_9668	8
_DSC0270	8
IMG_4909	8
IMG_4912	8
IMG_4913	8
IMG_4914	8

IMG_4917	9
IMG_4919	9
IMG_4953	9
IMG_4923	9
IMG_4926	9
IMG_4928	9
IMG_4929	10
IMG_4930	10
IMG_4931	10
IMG_4932	10
IMG_4937	10
IMG_4940	10
IMG_4943	11
IMG_4944	11
CONTACTS	12
Contact details	12
Telephones	12
Office hours	12
Address	12

SPECIFICATIONS

Overview

The Bestewind 50 design brief was Safety, Comfort and Speed. The bestewind 50 was designed as sturdy no-nonsense, stable, short handed sailor without the need to leave the cockpit at sea while sailing. Her pilothouse provides a comfortable social area for enjoyment in port and at sea even in bad weather. The straight bow gives a maximum waterline by hull length combined with her high sail area guarantees high day averages.

Basic Information

Category: Cruising Sailboat

Model Year: 2011

Year Built: 2012

Country: Netherlands

Dimensions

LOA: 49' 1" (14.96mm)

LWL: 45' (13.72mm)

Beam: 14.43

Max Draft: 7' 1" (2.15mm)

Speed, Capacities and Weight

Cruise Speed: 7.5 Knots Kts. (9 MPH)

Max Speed: 8.2 Knots Kts. (9 MPH)

Water Capacity: 600 Gallons

Holding Tank: 31.7 Gal Gallons

Fuel Capacity: 171.71 Gal Gallons

Accommodations

Total Cabins: 3

Sleeps: 8

Total Heads: 2

Hull and Deck Information

Hull Material: GRP

Deck Material: Esthec

Hull Configuration: Fin & Bulb

Hull Color: Sky Blue

Engine Information

Engines: 1

Manufacturer: Yanmar

Engine Type: Inboard

Fuel Type: Diesel

PHOTOS

Layout



IMG_4970



_DSC0285



IMG_5069



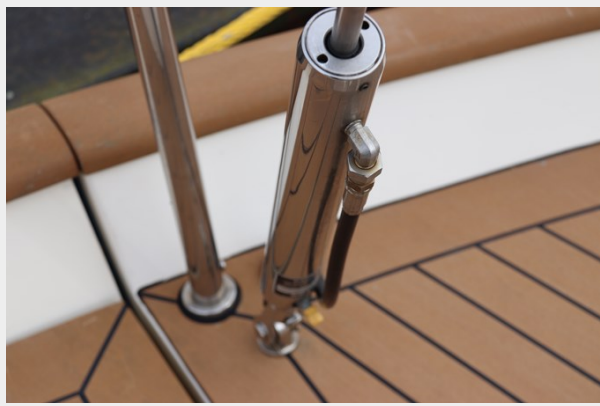
_DSC0268



IMG_0301



IMG_4966



IMG_0302



_DSC0281



IMG_5071



IMG_4972



zeilen in Engeland 08-08-2013 206



_DSC0270



IMG_9668



IMG_4909



IMG_4912



IMG_4913



IMG_4914



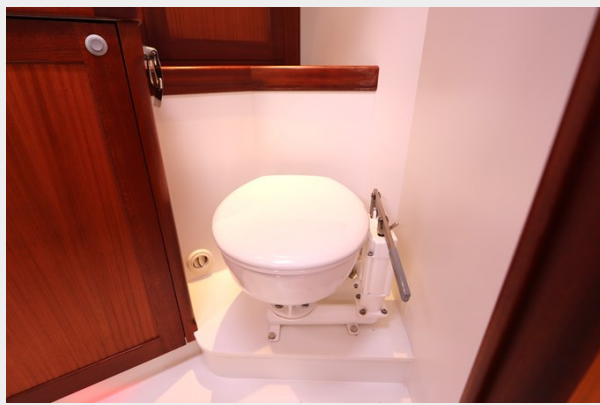
IMG_4917



IMG_4919



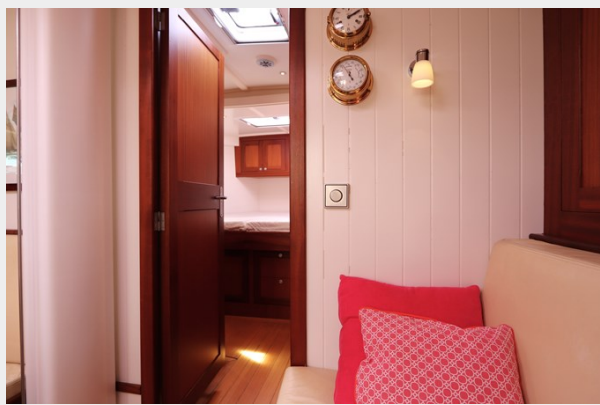
IMG_4953



IMG_4923



IMG_4926



IMG_4928



IMG_4929



IMG_4930



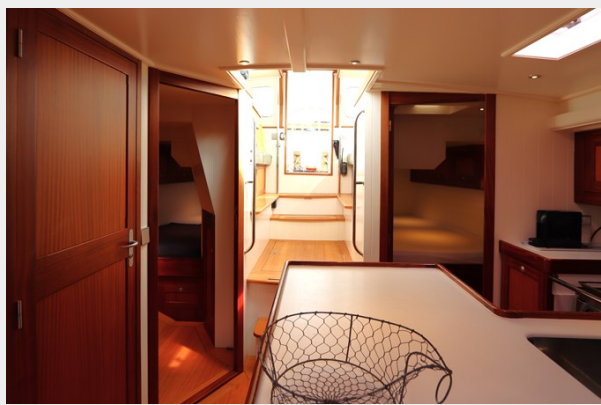
IMG_4931



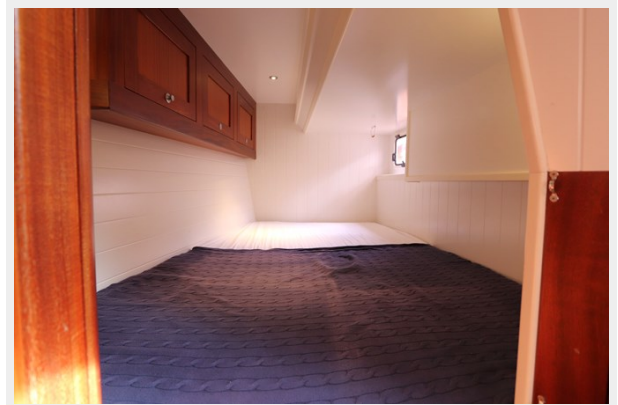
IMG_4932



IMG_4937



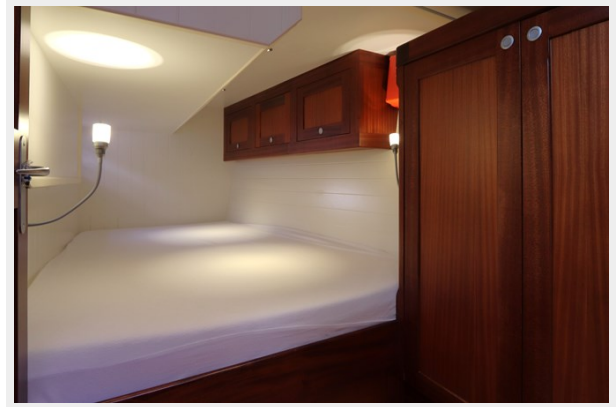
IMG_4940



IMG_4943



IMG_4944



CONTACTS

Andrey Shestakov, leading yacht broker of the sales department of Shestakov Yacht Sales Inc. Shestakov Yacht Sales Inc., the official representative of the Miami/Fort Lauderdale FL headquarters.

Contact details

Email: andrey@shestakovyachtsales.com

Web: shestakovyachtsales.com/en/

Telephones

USA: +1(954)274-4435

Office hours

Monday – Saturday: **9:00 - 21:00** EDT

Sunday: **closed**

Address



Harbour Towne Marina, 850 NE 3rd St,
STE 213, Dania, FL 33004