

PASSAGE 42 — HUNTER



Builder: HUNTER

Year Built: 1993

Model: Center Cockpit

Price: \$75,500 USD

Location: United States

LOA: 42' 6" (12.95mm)

Beam: 14

Max Draft: 5' (1.52mm)

Our experienced yacht broker, Andrey Shestakov, will help you choose and buy a yacht that best suits your needs **Passage 42 — HUNTER** from our catalogue. Presently, at Shestakov Yacht Sales Inc., we have a wide variety of yachts available on our sale's list. We also work in close contact with all the big yacht manufacturers from all over the world.

If you would like to buy a yacht **Passage 42 — HUNTER** or would like help answering any questions concerning purchasing, selling or chartering a yacht, please call **+1(954)274-4435**

TABLE OF CONTENTS

TABLE OF CONTENTS	2
SPECIFICATIONS	6
Overview	6
Basic Information	6
Dimensions	6
Speed, Capacities and Weight	6
Accommodations	6
Hull and Deck Information	7
Engine Information	7
PHOTOS	8
2	8
3	8
4	8
5	8
6	8
7	8
8	9
9	9
10	9
11	9
12	9
13	9
14	10
15	10
16	10
17	10
18	10
19	10

20	11
21	11
22	11
23	11
24	11
25	11
26	12
27	12
28	12
29	12
30	12
31	12
32	13
33	13
34	13
35	13
36	13
37	13
38	14
39	14
40	14
41	14
42	14
43	14
44	15
45	15
46	15
47	15
48	15

49	15
50	16
51	16
52	16
53	16
54	16
55	16
56	17
57	17
58	17
59	17
60	17
61	17
62	18
63	18
64	18
65	18
66	18
67	18
68	19
69	19
70	19
71	19
72	19
73	19
CONTACTS	20
Contact details	20
Telephones	20
Office hours	20

Address

20

SPECIFICATIONS

Overview

MOTIVATED SELLER, OFFERS ENCOURAGED!

The Hunter Passage 42 is a well-sought-after design and features spacious accommodations combined with excellent sailing performance. The salon is comfortable and roomy with plenty of seating. The galley is well laid out for cruising with ample space and storage. The master suite features standing headroom with centerline queen and private head with separate shower. The guest cabin is located forward of the salon with full guest head.

CERITH features a full enclosure, dinghy davits, Generator and Yanmar diesel. With a bit of TLC she will make a nice live aboard or cruiser.

Shown by appointment only, call to schedule.

Basic Information

Category: Center Cockpit

Model Year: 1993

Year Built: 1993

Country: United States

Dimensions

LOA: 42' 6" (12.95mm)

Beam: 14

Max Draft: 5' (1.52mm)

Speed, Capacities and Weight

Water Capacity: 150 Gallons

Fuel Capacity: 70 Gal Gallons

Accommodations

Total Cabins: 2

Total Heads: 2

Hull and Deck Information

Hull Material: Fiberglass

Engine Information

Engines: 1

Manufacturer: Yanmar

Engine Type: Inboard

Fuel Type: Diesel

PHOTOS

2



3



4



5



6



7



8



9



10



11



12



13



14



15



16



17



18



19



20



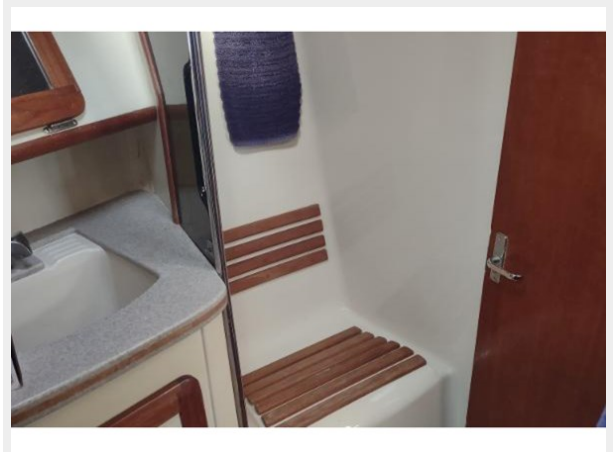
21



22



23



24



25



26



27



28



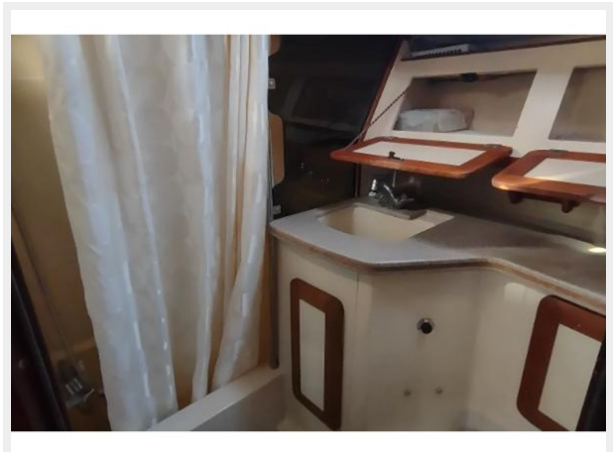
29



30



31



32



33



34



35



36



37



38



39



40



41



42



43



44



45



46



47



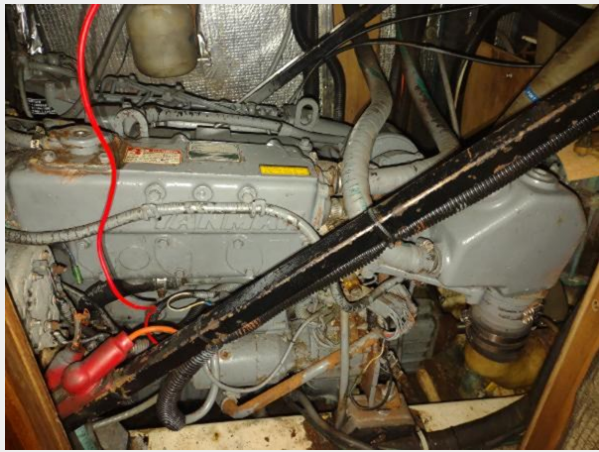
48



49



50



51



52



53



54



55



56



57



58



59



60



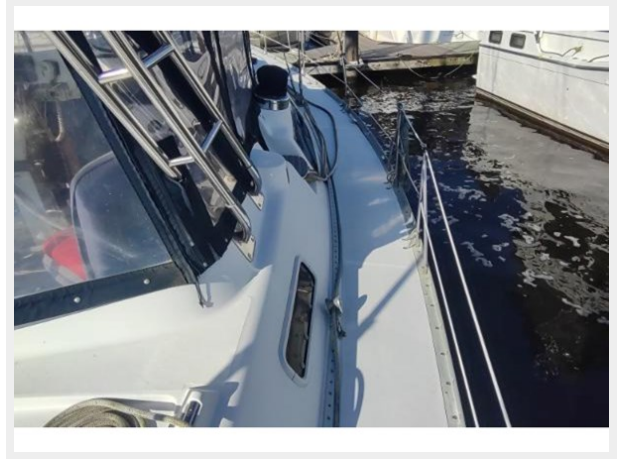
61



62



63



64



65



66



67



68



69



70



71



72



73



CONTACTS

Andrey Shestakov, leading yacht broker of the sales department of Shestakov Yacht Sales Inc. Shestakov Yacht Sales Inc., the official representative of the Miami/Fort Lauderdale FL headquarters.

Contact details

Email: andrey@shestakovyachtsales.com

Web: shestakovyachtsales.com/en/

Telephones

USA: +1(954)274-4435

Office hours

Monday – Saturday: **9:00 - 21:00** EDT

Sunday: **closed**

Address



Harbour Towne Marina, 850 NE 3rd St,
STE 213, Dania, FL 33004