

37 — PACIFIC SEACRAFT



Builder: PACIFIC SEACRAFT

Year Built: 1994

Model: Cruising Sailboat

Price: \$104,900 USD

Location: United States

LOA: 37' (11.28mm)

Beam: 10.83

Max Draft: 5' 6" (1.68mm)

Our experienced yacht broker, Andrey Shestakov, will help you choose and buy a yacht that best suits your needs 37 — PACIFIC SEACRAFT from our catalogue. Presently, at Shestakov Yacht Sales Inc., we have a wide variety of yachts available on our sale's list. We also work in close contact with all the big yacht manufacturers from all over the world.

If you would like to buy a yacht 37 — PACIFIC SEACRAFT or would like help answering any questions concerning purchasing, selling or chartering a yacht, please call +1(954)274-4435

TABLE OF CONTENTS

TABLE OF CONTENTS	2
SPECIFICATIONS	5
Overview	5
Basic Information	5
Dimensions	5
Speed, Capacities and Weight	5
Accommodations	5
Hull and Deck Information	6
Engine Information	6
PHOTOS	7
2	7
3	7
4	7
5	7
6	7
7	7
8	8
9	8
10	8
11	8
12	8
13	8
14	9
15	9
16	9
17	9
18	9
19	9

20	10
21	10
22	10
23	10
24	10
25	10
26	11
27	11
28	11
29	11
30	11
31	11
32	12
33	12
34	12
35	12
36	12
37	12
38	13
39	13
40	13
41	13
42	13
43	13
44	14
45	14
46	14
47	14
48	14

49	14
50	15
51	15
52	15
53	15
54	15
55	15
56	16
57	16
58	16
59	16
CONTACTS	17
Contact details	17
Telephones	17
Office hours	17
Address	17

SPECIFICATIONS

Overview

SHE'S JUST WRIGHT is a fine example of the highly desirable Pacific Seacraft 37 in excellent condition and shows well throughout. The PS 37 is known as a superb high-performance cruising yacht that incorporates all the qualities an experienced sailor looks for in "a proper yacht," such as seaworthiness, premium quality, exceptional performance, comfort and beauty. These boats track very well with a modern split keel underbody and skeg hung rudder. A sleek, beautiful, and brilliant performer in all conditions and comfortable for a couple with features specifically designed for extended ocean voyages.

If you are seeking a capable off-shore cruiser this PS 37 should be at the top of your list. Call to schedule an appointment.

Basic Information

Category: Cruising Sailboat

Model Year: 1994

Year Built: 1994

Country: United States

Dimensions

LOA: 37' (11.28mm)

Beam: 10.83

Max Draft: 5' 6" (1.68mm)

Speed, Capacities and Weight

Water Capacity: 85 Gallons

Holding Tank: 16 Gal Gallons

Fuel Capacity: 31 Gal Gallons

Accommodations

Total Cabins: 1

Total Heads: 1

Hull and Deck Information

Hull Material: Fiberglass

Engine Information

Engines: 1

Manufacturer: Yanmar

Engine Type: Inboard

Fuel Type: Diesel

PHOTOS

2



3



4



5



6



7



8



9



10



11



12



13



14



15



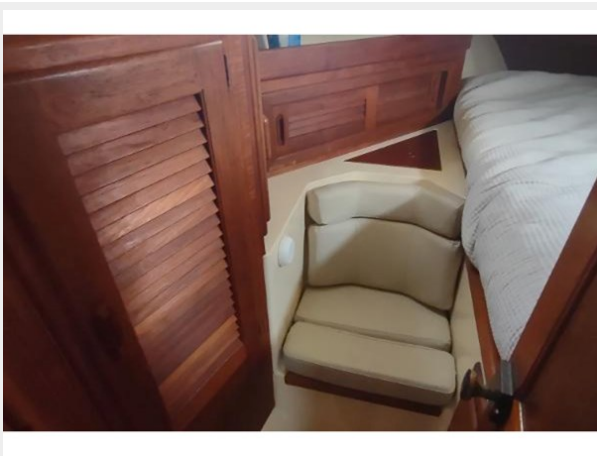
16



17



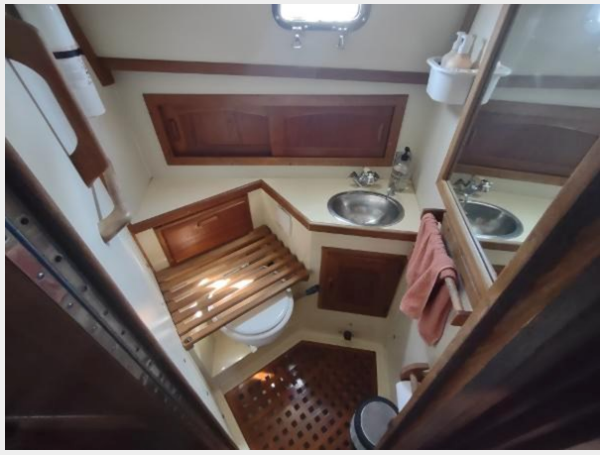
18



19



20



21



22



23



24



25



26



27



28



29



30



31



32



33



34



35



36



37



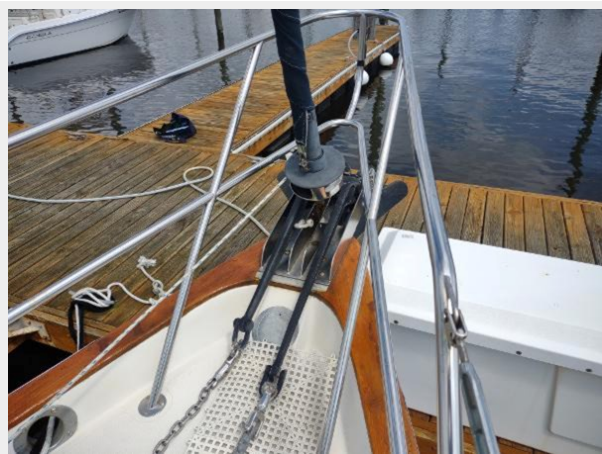
38



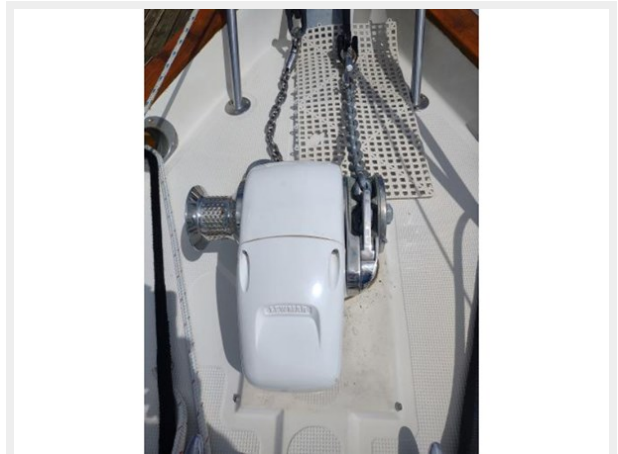
39



40



41



42



43



44



45



46



47



48



49



50



51



52



53



54



55



56



57



58



59



CONTACTS

Andrey Shestakov, leading yacht broker of the sales department of Shestakov Yacht Sales Inc. Shestakov Yacht Sales Inc., the official representative of the Miami/Fort Lauderdale FL headquarters.

Contact details

Email: andrey@shestakovyachtsales.com

Web: shestakovyachtsales.com/en/

Telephones

USA: +1(954)274-4435

Office hours

Monday – Saturday: **9:00 - 21:00** EDT

Sunday: **closed**

Address



Harbour Towne Marina, 850 NE 3rd St,
STE 213, Dania, FL 33004