

ALVA — VIKING PRINCESS



Builder: VIKING PRINCESS

Year Built: 1998

Model: Flybridge

Price: \$299,900 USD

Location: United States

LOA: 51' (15.54mm)

Beam: 14.16

Max Draft: 3' 9" (1.14mm)

Cruise Speed: 17 Knots Kts. (20 MPH)

Max Speed: 24 Knots Kts. (28 MPH)

Our experienced yacht broker, Andrey Shestakov, will help you choose and buy a yacht that best suits your needs **Alva — VIKING PRINCESS** from our catalogue. Presently, at Shestakov Yacht Sales Inc., we have a wide variety of yachts available on our sale's list. We also work in close contact with all the big yacht manufacturers from all over the world.

If you would like to buy a yacht **Alva — VIKING PRINCESS** or would like help answering any questions concerning purchasing, selling or chartering a yacht, please call **+1(954)274-4435**

TABLE OF CONTENTS

| | |
|------------------------------|---|
| TABLE OF CONTENTS | 2 |
| SPECIFICATIONS | 5 |
| Overview | 5 |
| Basic Information | 5 |
| Dimensions | 5 |
| Speed, Capacities and Weight | 5 |
| Accommodations | 5 |
| Hull and Deck Information | 6 |
| Engine Information | 6 |
| PHOTOS | 7 |
| 2 | 7 |
| 3 | 7 |
| 4 | 7 |
| 5 | 7 |
| 6 | 7 |
| 7 | 7 |
| 8 | 8 |
| 9 | 8 |
| 10 | 8 |
| 11 | 8 |
| 12 | 8 |
| 13 | 8 |
| 14 | 9 |
| 15 | 9 |
| 16 | 9 |
| 17 | 9 |
| 18 | 9 |
| 19 | 9 |

| | |
|----|----|
| 20 | 10 |
| 21 | 10 |
| 22 | 10 |
| 23 | 10 |
| 24 | 10 |
| 25 | 10 |
| 26 | 11 |
| 27 | 11 |
| 28 | 11 |
| 29 | 11 |
| 30 | 11 |
| 31 | 11 |
| 32 | 12 |
| 33 | 12 |
| 34 | 12 |
| 35 | 12 |
| 36 | 12 |
| 37 | 12 |
| 38 | 13 |
| 39 | 13 |
| 40 | 13 |
| 41 | 13 |
| 42 | 13 |
| 43 | 13 |
| 44 | 14 |
| 45 | 14 |
| 46 | 14 |
| 47 | 14 |
| 48 | 14 |

| | |
|-----------------|----|
| 49 | 14 |
| 50 | 15 |
| 51 | 15 |
| 52 | 15 |
| 53 | 15 |
| 54 | 15 |
| 55 | 15 |
| 56 | 16 |
| 57 | 16 |
| 58 | 16 |
| 59 | 16 |
| 60 | 16 |
| 61 | 16 |
| 62 | 17 |
| 63 | 17 |
| 64 | 17 |
| 65 | 17 |
| 66 | 17 |
| 67 | 17 |
| 68 | 18 |
| 69 | 18 |
| CONTACTS | 19 |
| Contact details | 19 |
| Telephones | 19 |
| Office hours | 19 |
| Address | 19 |

SPECIFICATIONS

Overview

Alva is a very clean, well equipped vessel, ready for cruising. It has had many upgrades with the current owner and is ready to go. She has **twin 3208TA Caterpillar** engines, along with a bow thruster. Alva is a two stateroom, and two head vessel with plenty of room for guests.

Please check out the **FULL SPECS** for more details.

Basic Information

Category: Flybridge

Sub Category: Flybridge

Model Year: 1998

Year Built: 1998

Country: United States

Dimensions

LOA: 51' (15.54mm)

Beam: 14.16

Max Draft: 3' 9" (1.14mm)

Speed, Capacities and Weight

Cruise Speed: 17 Knots Kts. (20 MPH)

Max Speed: 24 Knots Kts. (28 MPH)

Water Capacity: 187 Gallons

Holding Tank: 58 Gal Gallons

Fuel Capacity: 428 Gal Gallons

Accommodations

Total Cabins: 2

Total Heads: 2

Hull and Deck Information

Hull Material: Fiberglass

Engine Information

Engines: 2

Manufacturer: Caterpillar

Engine Type: Inboard

Fuel Type: Diesel

PHOTOS

2



3



4



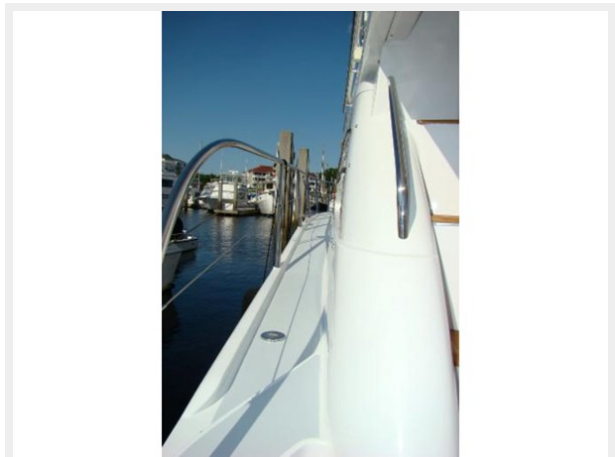
5



6



7



8



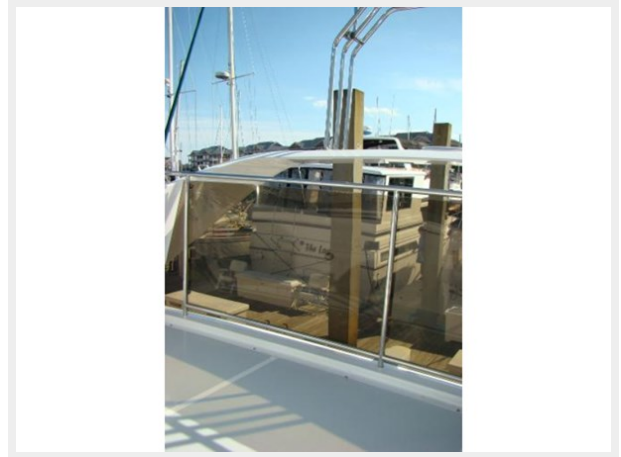
9



10



11



12



13



14



15



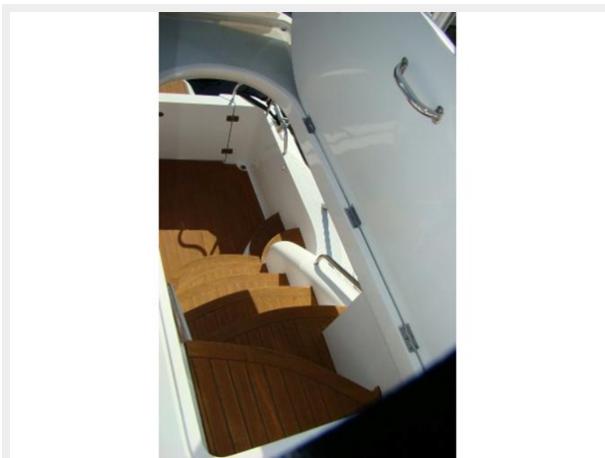
16



17



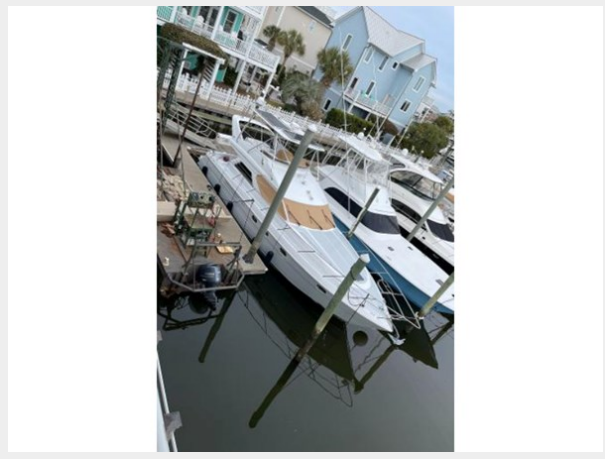
18



19



20



21



22



23



24



25



26



27



28



29



30



31



32



33



34



35



36



37



38



39



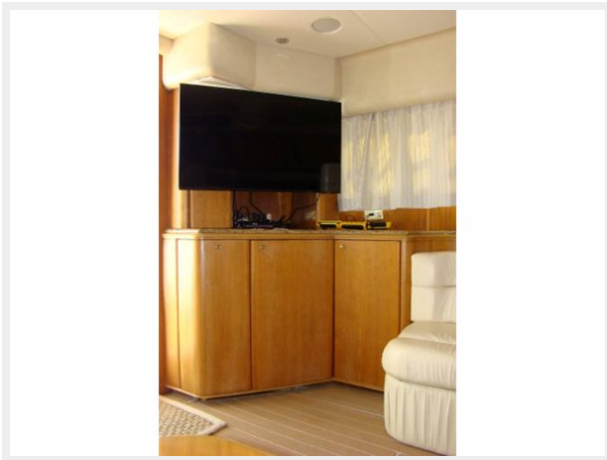
40



41



42



43



44



45



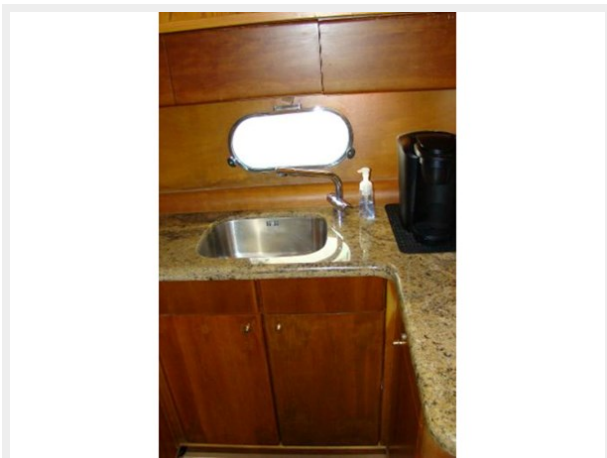
46



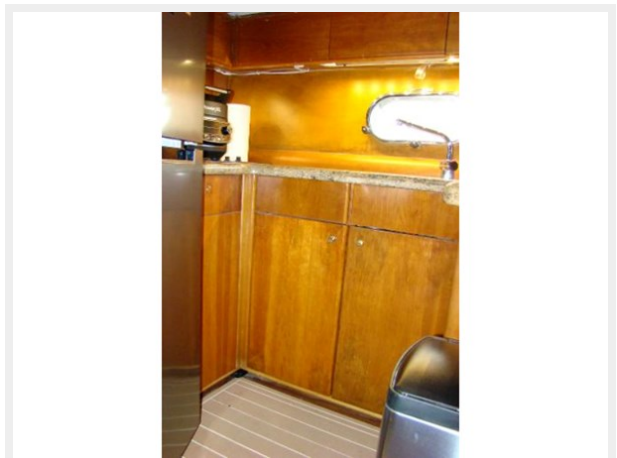
47



48



49



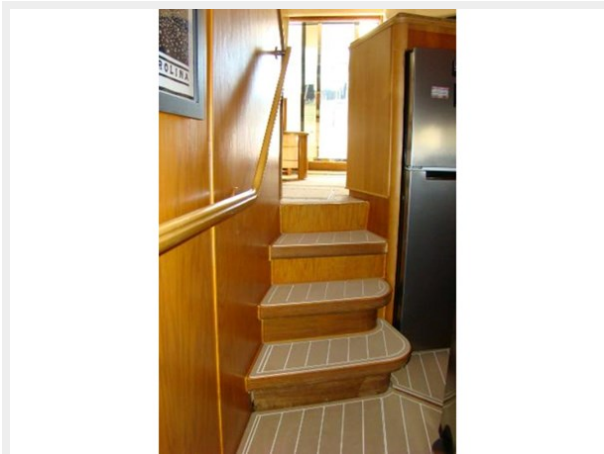
50



51



52



53



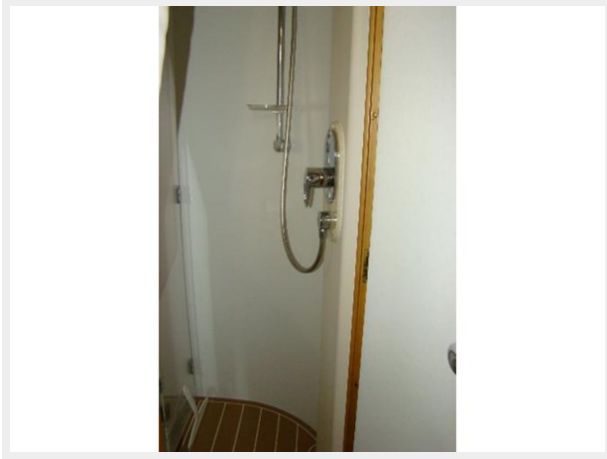
54



55



56



57



58



59



60



61



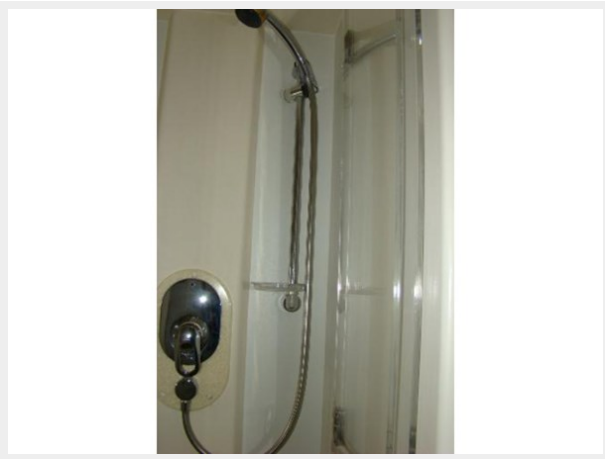
62



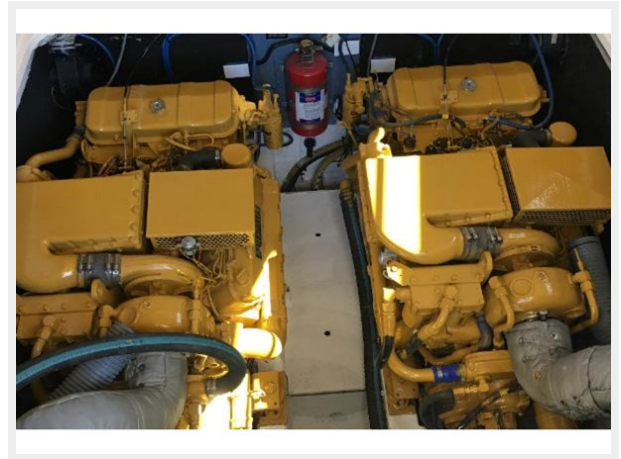
63



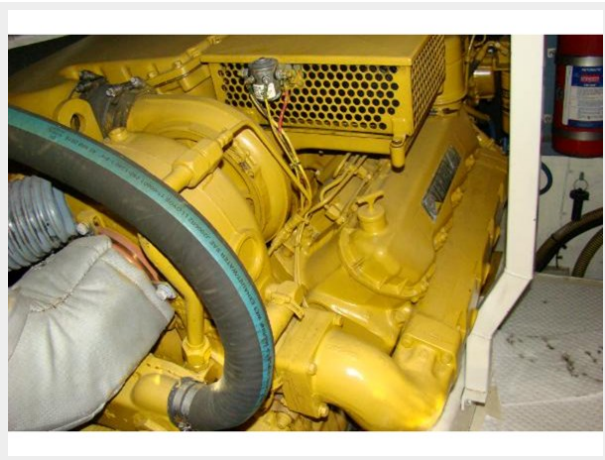
64



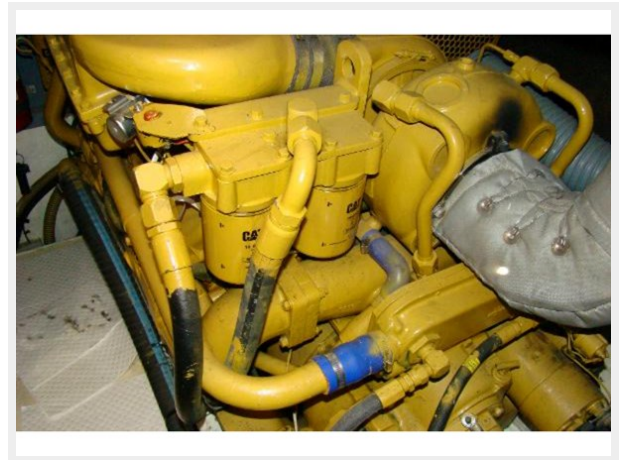
65



66



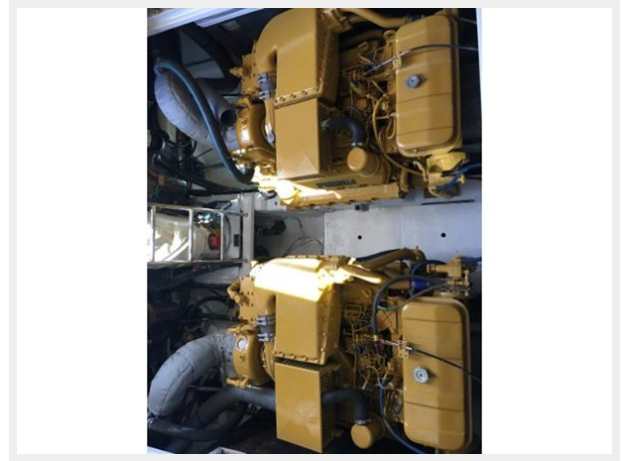
67



68



69



CONTACTS

Andrey Shestakov, leading yacht broker of the sales department of Shestakov Yacht Sales Inc. Shestakov Yacht Sales Inc., the official representative of the Miami/Fort Lauderdale FL headquarters.

Contact details

Email: andrey@shestakovyachtsales.com

Web: shestakovyachtsales.com/en/

Telephones

USA: +1(954)274-4435

Office hours

Monday – Saturday: **9:00 - 21:00** EDT

Sunday: **closed**

Address



Harbour Towne Marina, 850 NE 3rd St,
STE 213, Dania, FL 33004