

PERCEPTION — IRWIN YACHTS



Builder: IRWIN YACHTS

Year Built: 1989

Model: Cruising Sailboat

Price: \$229,000 USD

Location: United States

LOA: 55' 8" (16.97m)

Beam: 15.33

Min Draft: 5' 6" (1.68m)

Max Draft: 7' 1" (2.16m)

Cruise Speed: 8 Knots Kts. (9 MPH)

Max Speed: 9.5 Knots Kts. (11 MPH)

Our experienced yacht broker, Andrey Shestakov, will help you choose and buy a yacht that best suits your needs **Perception — IRWIN YACHTS** from our catalogue. Presently, at Shestakov Yacht Sales Inc., we have a wide variety of yachts available on our sale's list. We also work in close contact with all the big yacht manufacturers from all over the world.

If you would like to buy a yacht **Perception — IRWIN YACHTS** or would like help answering any questions concerning purchasing, selling or chartering a yacht, please call **+1(954)274-4435**

TABLE OF CONTENTS

TABLE OF CONTENTS	2
SPECIFICATIONS	5
Overview	5
Basic Information	5
Dimensions	5
Speed, Capacities and Weight	6
Accommodations	6
Hull and Deck Information	6
Engine Information	6
PHOTOS	7
IMG_5064	7
IMG_5065	7
IMG_5066	7
IMG_5067	7
IMG_5068	8
IMG_5069	8
IMG_5070	8
IMG_5071	8
IMG_5072	9
IMG_5073	9
IMG_5074	9
IMG_5075	9
IMG_5076	10
IMG_5077	10
IMG_5078	10
IMG_5079	10
IMG_5080	11
IMG_5081	11

IMG_5082	11
IMG_5083	11
IMG_5084	12
IMG_5085	12
IMG_5086	12
IMG_5087	12
IMG_5088	13
IMG_5090	13
IMG_5091	13
IMG_5026	13
IMG_5027	14
IMG_5028	14
IMG_5029	14
IMG_5030	14
IMG_5031	15
IMG_5033	15
IMG_5034	15
IMG_5035	15
IMG_5036	16
IMG_5037	16
IMG_5038	16
IMG_5039	16
IMG_5040	17
IMG_5041	17
IMG_5042	17
IMG_5043	17
IMG_5044	18
IMG_5045	18
IMG_5046	18

IMG_5047	18
IMG_5048	19
IMG_5049	19
IMG_5050	19
IMG_5051	19
IMG_5052	20
IMG_5053	20
IMG_5056	20
IMG_5057	20
IMG_5058	21
IMG_5059	21
IMG_5060	21
IMG_5061	21
IMG_5062	22
CONTACTS	23
Contact details	23
Telephones	23
Office hours	23
Address	23

SPECIFICATIONS

Overview

“The boat that started the big boat deck-saloon revolution”

The Irwin 52 was a trend-setting boat. It was a deck-saloon cruiser before there were deck-saloon cruisers. What’s more, the Irwin 52, with more than 250 hulls launched, may be the most popular big boat, 50-foot-plus, ever built. These beamy ... cruisers offered no apologies for their motoryacht-like interior accommodations, spacious cockpit, wide side decks and raised bulwarks. It boasts of good performance under power as well as sail. Hmm, come to think of it those features sound awfully familiar? When you take a look at many of today’s larger cruising boats, it seems that Ted Irwin was a visionary. *By John Kretschmer, 2008*

Perception is a 1989 Irwin 52 Mark IV which holds the deck of the Irwin 54. One of the last 52’s she received the 54 deck as a factory change over. **Perception** has been consistently maintained and updated with current equipment. A major refit was completed in 2008 which included engine, genset, bow thruster, plumbing, DC power systems, mast step replacement, electronics, refrigeration, bedding, hatch porthole window re-bedding, hatch glass replacement hardware along with a deck, hull, and mast painting. Saloon/Galley were redesigned to allow for current comforts of a modern day design. Light usage as shown by hours, she continues to be updated as needed. A 155 hp engine moves her at a solid 8.5 knots giving you enough power to move **Perception** in any sea or current. A beamy, solid, excellent sailing sailboat with enough room for the entire family, or because of today’s upgrades, she moves two with superior comfort and ease. She is at home cruising the intercoastal with her intercoastal friendly mast or on a passage offshore and is envied in all marina’s. She was built for the Islands, but now she does it with extreme comfort and safety! A boat that has been truly updated and kept current!

Basic Information

Category: Cruising Sailboat

Model Year: 1989

Year Built: 1989

Country: United States

Dimensions

LOA: 55' 8" (16.97mm)

LWL: 44' (13.41mm)

LOD: 52' 6" (16mm)

Beam: 15.33

Min Draft: 5' 6" (1.68mm)

Max Draft: 7' 1" (2.16mm)

Speed, Capacities and Weight

Cruise Speed: 8 Knots Kts. (9 MPH)

Max Speed: 9.5 Knots Kts. (11 MPH)

Gross Tonnage: 46000 Pounds

Water Capacity: 480 Gallons

Holding Tank: 32 Gal Gallons

Fuel Capacity: 340 Gal Gallons

Accommodations

Total Cabins: 3

Total Heads: 2

Hull and Deck Information

Hull Material: Fiberglass

Deck Material: Teak

Hull Configuration: Monohull

Hull Designer: Ted Irwin

Interior Designer: IRWIN YACHTS

Engine Information

Engines: 1

Manufacturer: Cummings

Engine Type: Inboard

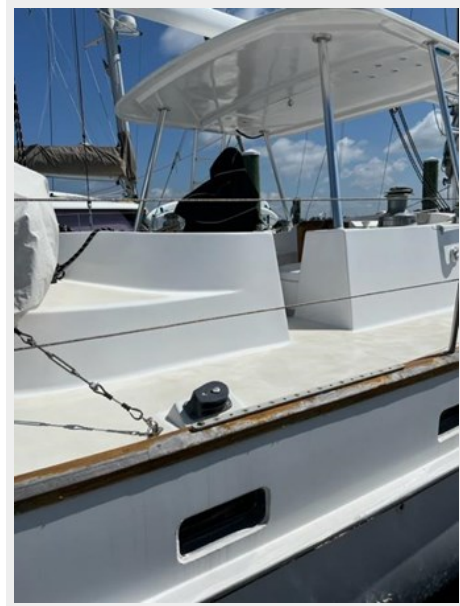
Fuel Type: Diesel

PHOTOS

IMG_5064



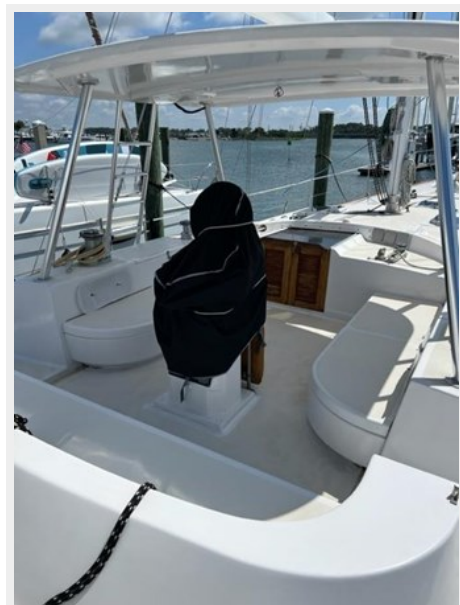
IMG_5065



IMG_5066



IMG_5067



IMG_5068



IMG_5069



IMG_5070



IMG_5071



IMG_5072



IMG_5073



IMG_5074



IMG_5075



IMG_5076



IMG_5077



IMG_5078



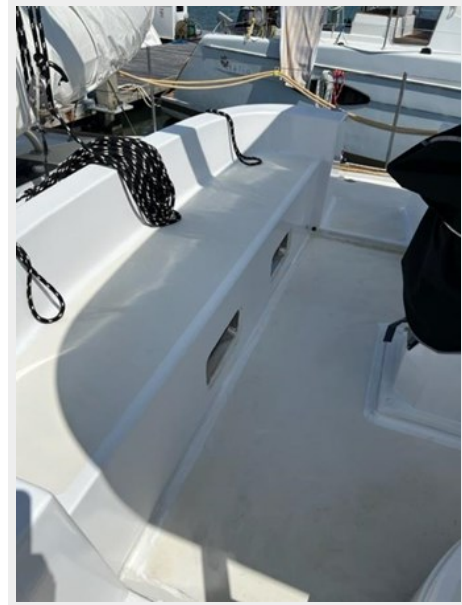
IMG_5079



IMG_5080



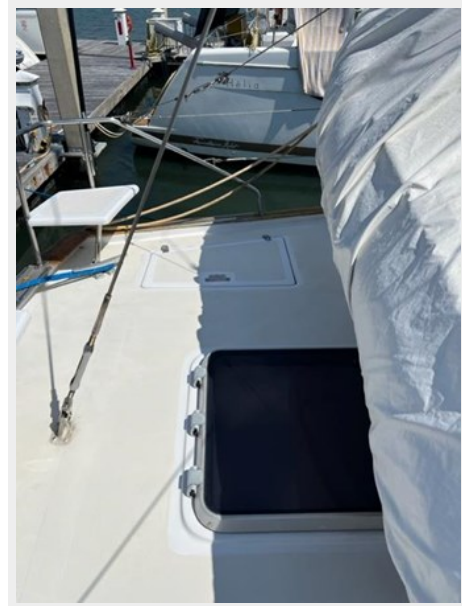
IMG_5081



IMG_5082



IMG_5083



IMG_5084



IMG_5085



IMG_5086



IMG_5087



IMG_5088



IMG_5090



IMG_5091



IMG_5026



IMG_5027



IMG_5028



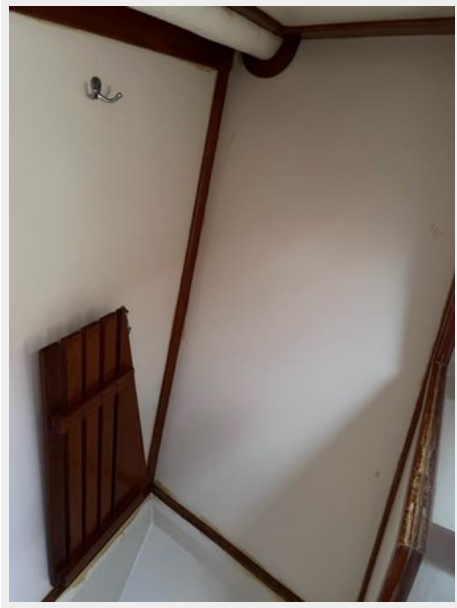
IMG_5029



IMG_5030



IMG_5031



IMG_5033



IMG_5034



IMG_5035



IMG_5036



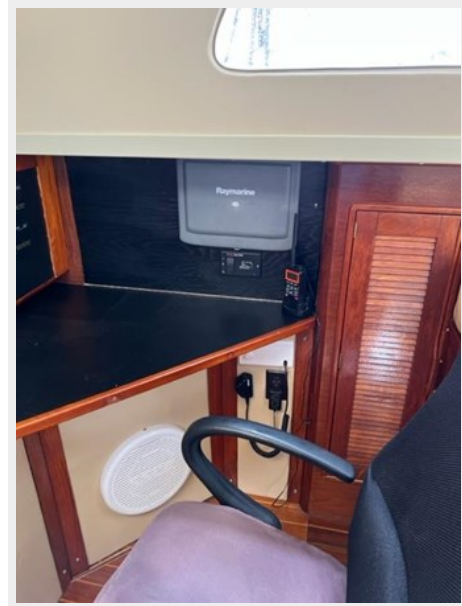
IMG_5037



IMG_5038



IMG_5039



IMG_5040



IMG_5041



IMG_5042



IMG_5043



IMG_5044



IMG_5045



IMG_5046



IMG_5047



IMG_5048



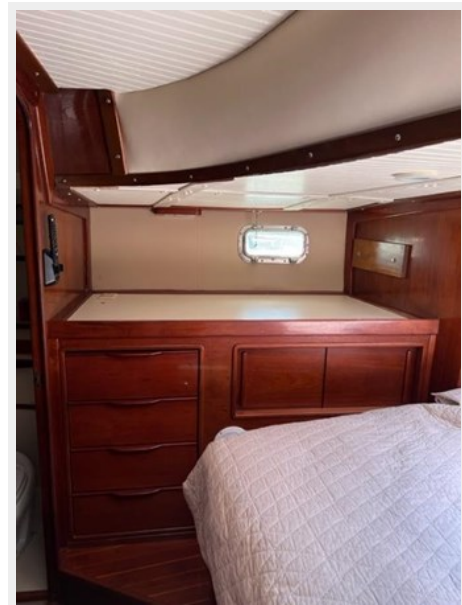
IMG_5049



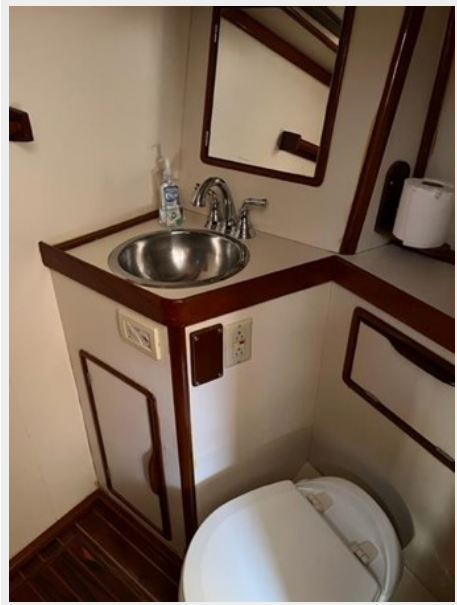
IMG_5050



IMG_5051



IMG_5052



IMG_5053



IMG_5056



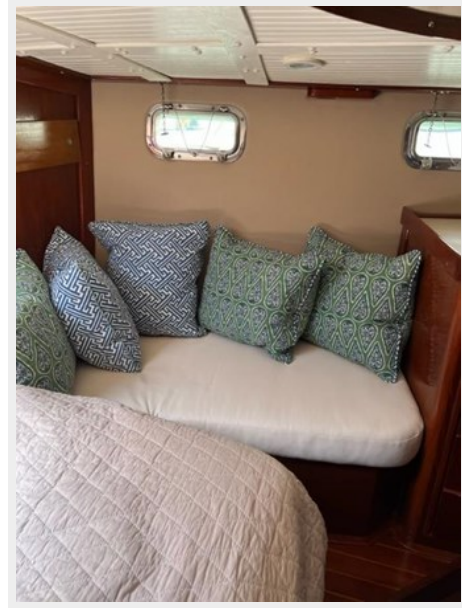
IMG_5057



IMG_5058



IMG_5059



IMG_5060



IMG_5061



IMG_5062



CONTACTS

Andrey Shestakov, leading yacht broker of the sales department of Shestakov Yacht Sales Inc. Shestakov Yacht Sales Inc., the official representative of the Miami/Fort Lauderdale FL headquarters.

Contact details

Email: andrey@shestakovyachtsales.com

Web: shestakovyachtsales.com/en/

Telephones

USA: +1(954)274-4435

Office hours

Monday – Saturday: **9:00 - 21:00** EDT

Sunday: **closed**

Address



Harbour Towne Marina, 850 NE 3rd St,
STE 213, Dania, FL 33004