

FAMILYBILT — MOONEN



Судостроитель: MOONEN

Год постройки: 2015

Модель: Semi-Displacement

Цена: ЦЕНА ЯХТЫ ПО ЗАПРОСУ

Местонахождение: United States

Длина общая: 120' (36.58mm)

Ширина: 25

Мин. осадка: 6' (1.83mm)

Макс. осадка: 7' (2.13mm)

Крейс. скорость: 11 Knots Kts. (13 MPH)

Макс. скорость: 22 Knots Kts. (25 MPH)

Купить **Familybilt — MOONEN** а также выбрать подходящую вам яхту из нашего каталога яхт вам поможет опытный яхтенный брокер Андрей Шестаков. На сегодняшний день компания **Shestakov Yacht Sales Inc.** имеет большое количество яхт в собственном списке продаж, а также тесно сотрудничает со всеми крупными яхтенными производителями по всему миру.

Для того чтобы купить яхту **Familybilt — MOONEN** а также проконсультироваться по любому вопросу связанному с покупкой, продажей, чартером яхт позвоните по телефону **+7(918)465-66-44**.

ОГЛАВЛЕНИЕ

ОГЛАВЛЕНИЕ	2
ХАРАКТЕРИСТИКИ	5
Обзор	5
Основная информация	6
Размеры	6
Скорость, вместимость и масса	6
Размещение	7
Корпус и палуба	7
Информация о двигателе	7
ФОТОГРАФИИ	8
Aerial View 1	8
Aerial View 2	8
Aerial View 3	8
Aerial View 4	8
Aerial View 5	8
Aerial View 6	8
Aerial View 7	9
Aerial View 8	9
Aerial View 9	9
Aerial View 10	9
Main Salon Foyer going to MD Dining	9
Aerial View 11	9
Main Foyer Main Guest Side Entrance	10
Main Dining Table View From Main Foyer	10
Main Dining Table View 1	10
Main Dining Table View 2	10
Main Salon Starboard TV Installation	10
Formal Dining & Main salon Sofa	10

Main Salon Seating	11
Main Salon Seating 1	11
Main Salon Seating 2	11
Main Salon Seating 3	11
Main Salon View From Main Aft Entrance	11
Main Salon View From Main Aft Entrance 2	11
Main Salon View From Main Aft Entrance 3	12
Main Salon View From Main Aft Entrance 4	12
View Of Bar, Main Salon & Dining Area From Main Aft Deck Entrance	12
Main Salon Bar Area	12
View Of Bar, Main Salon From Main Aft Entrance	12
Main Salon Bar Area 2	12
Main Salon View with Bar Area & Main Deck Af	13
Main Salon Seating 4	13
VIP 2	13
Cabin 3	13
Cabin 3 Facing Cabin Door	13
Cabin 3 Facing Cabin Door 2	13
DSC05197	14
DSC05202	14
VIP 2	14
VIP 2	14
Twin Cabin 1	14
Twin Cabin	14
Twin Cabin View From Cabin Entrance Door	15
Twin Cabin	15
DSC05262	15
DSC05267	15
Master Bedroom	15

Master Bedroom	15
Master Bedroom	16
Master Bedroom	16
Master Bedroom Office Desk	16
Master Bedroom	16
VIP 1 Bathroom	16
VIP 1 Bathroom	16
VIP 1 Bathroom	17
Master Closet	17
Sundeck With Jacuzzi Facing Forward	17
Master Closet	17
Sundeck With Jacuzzi Facing Forward 2	18
Sundeck With Jacuzzi Facing Forward 3	18
КОНТАКТЫ	19
Контактная информация	19
Телефоны	19
Время работы	19
Адрес	19

ХАРАКТЕРИСТИКИ

Обзор

Introducing the "Familybilt", a remarkable representation of the vastness, fluidity and elegance of the sea. Constructed in 2015 by the prestigious Dutch shipyard Moonen, renowned for its exceptional superyachts designs, the Familybilt offers a luxurious aquatic experience for those seeking to cut ties with the mainland and immerse themselves in the grandeur of the open seas. Its total length spans 121' (36.88m), it is proportioned to ensure lavish comfort without sacrificing its ability to navigate narrower spaces and secluded "hidden gem" destinations. From its sleek exterior to its intricately designed interiors, every inch of this Motor Yacht embodies classic sophistication, elegance, and state-of-the-art technology, ensuring a seamless maritime journey. Familybilt's hull is robust, constructed from a high-density steel variant specifically designed for marine applications, offering a sturdiness fit for the open ocean. The superstructure is built with aluminum for optimal balance and performance. Its overall aesthetic design plays out in the juxtaposition of its gleaming white body contrasted against the deep blues of the sea. The Familybilt is a symbol of elegance, designed to stand out against the serene background of any seascape. The interior, crafted with keen attention to ergonomic comfort and functionality, can accommodate up to 12 guests across its multi-story structure. The owner's stateroom, with spacious living quarters and a private sun deck, gives off a homely ambiance, amplifying the 'Familybilt' essence. Other cabins include a VIP suite, two double cabins, and two twin cabins, all embellished and equipped with luxurious furnishings and modern amenities. Moreover, the vessel is also capable of housing a crew of 8 personnel, allowing for a safe and serviced expedition. The indoor lounge and dining area are tastefully designed with an open layout. The use of light-colored paneling, plush fabrics, and high-quality woods creates a naturally illuminated and alluring environment. Each piece of furniture, artwork, and decor found within the Familybilt has been carefully handpicked to contribute to the yacht's plush surroundings. The well-equipped kitchen and modern bar area complete the unique charm of this motor yacht. Unique to the Familybilt are its distinctive outdoor areas. The main deck, with a spacious outdoor dining setup, holds a central place for al fresco meals whilst soaking in panoramic ocean views. The upper deck hosts a hot tub and a numerous sun loungers, ideal for basking in the sun. It also includes a generous lounging area where the guests can unwind and enjoy exotic sunsets. The dedicated beach club at the stern furthers its appeal, leading straight to the sea for snorkeling, swimming, or other water sports. Innovation is key in this 2015 model, as the Familybilt provides an advanced navigation system, complete with updated software for ensuring precision in route and destination tracking. It is powered by two Caterpillar diesel engines, guaranteeing a maximum speed of 14 knots and cruising speed of 12 knots, promising a smooth and enjoyable voyage, irrespective of the distance. Undoubtedly, the stunner of the Familybilt is its eco-friendly design. The propulsion system is seriously efficient, which, alongside the yacht's sleek design, reduces fuel consumption dramatically. This yacht has been built understanding the growing importance of preserving the marine ecosystem; thus, it boasts lower emissions and reduced noise pollution. Familybilt emanates an inviting allure that pulls you towards a comforting joyride across the blue expanse. Luxurious, timeless, and in harmony with the environment - the

Familybilt - a 2015 Moonen yacht echoes a perfect blend of luxury and performance with high regard for safety and fuel efficiency. To sum up, this Motor Yacht not only symbolizes opulence but also demonstrates innovative marine technology, perfectly encompassing the essence of its name: Familybilt. The ship is staunchly built, making it an ideal haven for a family seeking to create a trove of beautiful memories and experiences on the sea.

Основная информация

Тип судна: Semi-Displacement	Подкатегория: Semi-Displacement
Модельный год: 2015	Год постройки: 2015
Вид обновления: Full paint job & Interior full refit	Страна: United States

Размеры

Длина общая: 120' (36.58mm)	Длина по ватерлинии: 91' (27.74mm)
Ширина: 25	Мин. осадка: 6' (1.83mm)
Макс. осадка: 7' (2.13mm)	

Скорость, вместимость и масса

Крейс. скорость: 11 Knots Kts. (13 MPH)	Дальность на крейсерской скорости: 3000
Макс. скорость: 22 Knots Kts. (25 MPH)	Дальность на макс. скорости: 1500 Kts.
Чистый вес: 298 Pounds	Вместимость воды: 2000 Gallons
Вместимость сточного бака: 790 Gal Gallons	Объем топливного бака: 7000 Gal Gallons
Расход топлива: 550 Gal Gallons	

Размещение

Всего кают: 5

Всего коек: 10

Спальные места: 10

Всего ком. состава: 6

Каюты экипажа: 6

Койки экипажа: 6

Комм. состав экипажа: 3

Корпус и палуба

Материал корпуса: Steel

Материал палубы: Teak

Цвет корпуса: AwlGrip Snow White

Дизайнер корпуса: MOONEN

Дизайнер экстерьера: Bill Dixon Design

Дизайнер интерьера: Owner

Информация о двигателе

Двигатели: 2

Производитель: MTU

Тип двигателя: Other

Тип топлива: Diesel

ФОТОГРАФИИ

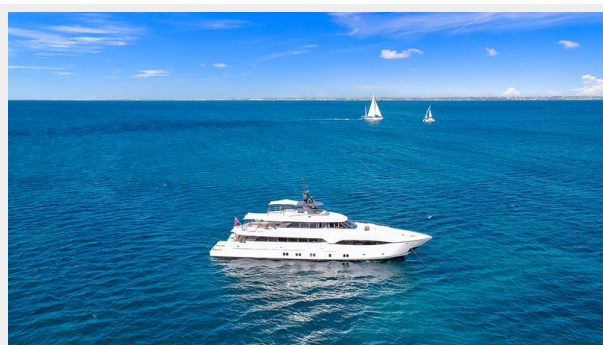
Aerial View 1



Aerial View 2



Aerial View 3



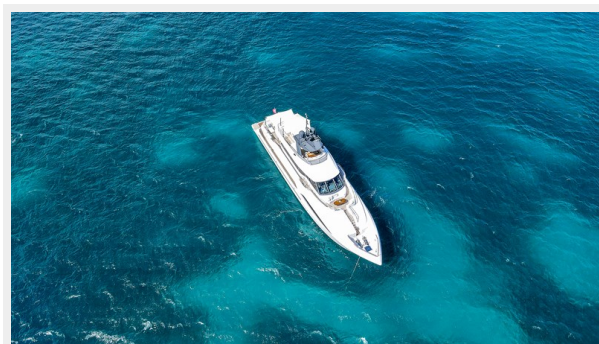
Aerial View 4



Aerial View 5



Aerial View 6



Aerial View 7



Aerial View 8



Aerial View 9



Aerial View 10



Aerial View 11



Main Salon Foyer going to MD Dining



Main Foyer Main Guest Side Entrance



Main Dining Table View From Main Foyer



Main Dining Table View 1



Main Dining Table View 2



Main Salon Starboard TV Installation



Formal Dining & Main salon Sofa



Main Salon Seating



Main Salon Seating 1



Main Salon Seating 2



Main Salon Seating 3



Main Salon View From Main Aft Entrance



Main Salon View From Main Aft Entrance 2



Main Salon View From Main Aft Entrance 3



Main Salon View From Main Aft Entrance 4



Main Salon Bar Area



View Of Bar, Main Salon & Dining Area From Main Aft Deck Entrance



Main Salon Bar Area 2



View Of Bar, Main Salon From Main Aft Entrance



Main Salon Seating 4



Main Salon View with Bar Area & Main Deck Af



VIP 2



Cabin 3



Cabin 3 Facing Cabin Door



Cabin 3 Facing Cabin Door 2



DSC05197



DSC05202



VIP 2



VIP 2



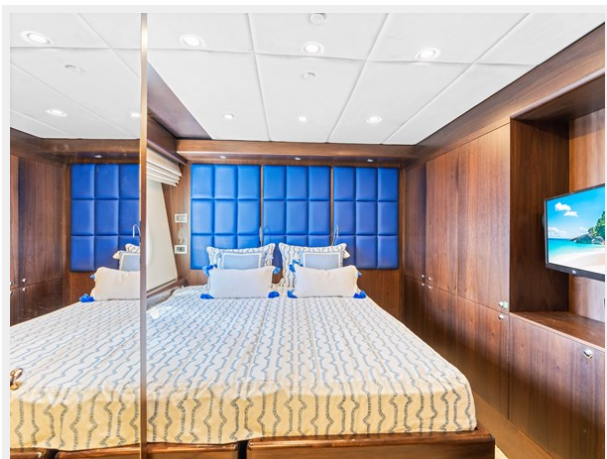
Twin Cabin 1



Twin Cabin



Twin Cabin View From Cabin Entrance Door



DSC05262

Twin Cabin



DSC05267



Master Bedroom



Master Bedroom



Master Bedroom



Master Bedroom



Master Bedroom Office Desk



Master Bedroom



VIP 1 Bathroom



VIP 1 Bathroom



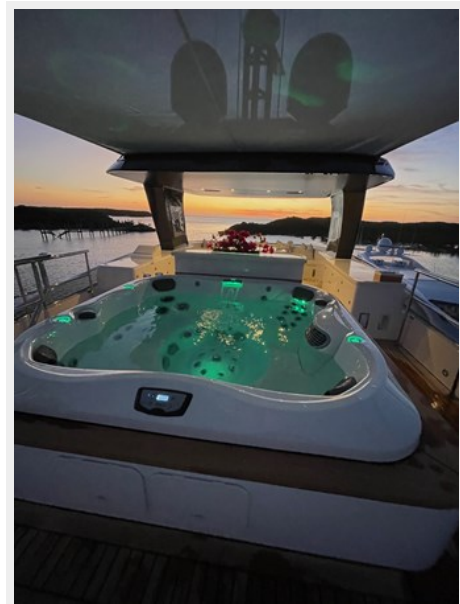
VIP 1 Bathroom



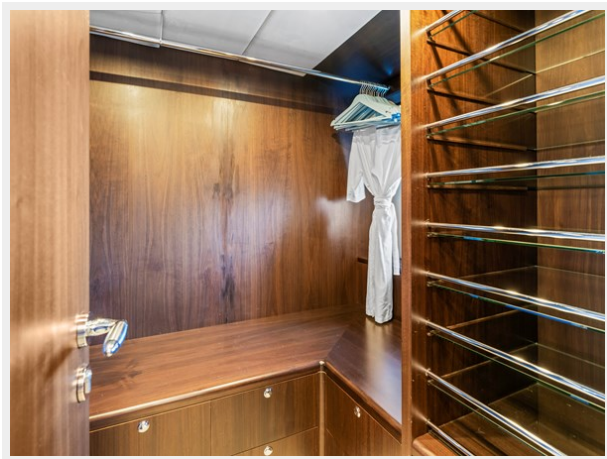
Master Closet



Sundeck With Jacuzzi Facing Forward



Master Closet



Sundeck With Jacuzzi Facing Forward 2



Sundeck With Jacuzzi Facing Forward 3



КОНТАКТЫ

Андрей Шестаков (Andrey Shestakov) – ведущий яхтенный брокер отдела продаж яхт и судов компании Shestakov Yacht Sales Inc. Официальный представитель Shestakov Yacht Sales Inc. для русскоговорящих клиентов в центральном офисе компании в Майами/Форт Лодердейл/Флорида/США.

Контактная информация

Email: andrey@shestakovyachtsales.com

Web: shestakovyachtsales.com

Телефоны

Краснодарский край: **+7(918)465-66-44**

США, Майами, Флорида: **+1(954)274-4435**

Время работы

Понедельник – Суббота: **9:00 - 21:00**
EDT

Воскресенье: **Закрито**

Адрес



Harbour Towne Marina, 850 NE 3rd St,
STE 213, Dania, FL 33004