

## TRILLIUM — HINCKLEY



**Builder:** HINCKLEY

**Year Built:** 1987

**Model:** Sloop

**Price:** \$285,000 USD

**Location:** United States

**LOA:** 42' (12.8mm)

**Beam:** 12.5

**Min Draft:** 5' (1.52mm)

**Max Draft:** 9' 1" (2.77mm)

**Cruise Speed:** 6.5 Knots Kts. (7 MPH)

**Max Speed:** 7 Knots Kts. (8 MPH)

Our experienced yacht broker, Andrey Shestakov, will help you choose and buy a yacht that best suits your needs **TRILLIUM — HINCKLEY** from our catalogue. Presently, at Shestakov Yacht Sales Inc., we have a wide variety of yachts available on our sale's list. We also work in close contact with all the big yacht manufacturers from all over the world.

If you would like to buy a yacht **TRILLIUM — HINCKLEY** or would like help answering any questions concerning purchasing, selling or chartering a yacht, please call **+1(954)274-4435**

# TABLE OF CONTENTS

---

TABLE OF CONTENTS	2
SPECIFICATIONS	4
Overview	4
Basic Information	4
Dimensions	4
Speed, Capacities and Weight	4
Accommodations	4
Hull and Deck Information	5
Engine Information	5
PHOTOS	6
Cockpit and Helm	6
Helm	6
Stern	6
Salon Port Side	6
Salon Starboard Side	7
Salon Looking Aft	7
Fireplace in Salon	7
Master Stateroom	7
Ensuite Head	8
Walk-In Aft Quarter Berth	8
Walk-In Aft Quarter Berth	8
Double Stainless Galley Sink	8
Galley Stove	9
Galley Storage	9
Galley Fridge	9
Instruments in Cockpit	9
Engine	10
Tank Tender	10

---

Primary Winch	10
Hard Dodger	10
Cockpit Bimini	11
Propshaft	11
Propshaft	11
Starboard side	11
Sailing	12
<b>CONTACTS</b>	<b>13</b>
Contact details	13
Telephones	13
Office hours	13
Address	13

---

# SPECIFICATIONS

---

## Overview

---

TRILLIUM is a 1987 Hinckley SW 42 with an electric Hood stowaway rig, a customized Herreshoff style white Formica and cherry trim interior that includes a dinette, separate nav station and a Luke tiled fireplace. She has been continually upgraded and maintained in true yacht fashion.

## Basic Information

---

**Category:** Sloop

**Model Year:** 1987

**Year Built:** 1987

**Country:** United States

## Dimensions

---

**LOA:** 42' (12.8mm)

**Beam:** 12.5

**Min Draft:** 5' (1.52mm)

**Max Draft:** 9' 1" (2.77mm)

## Speed, Capacities and Weight

---

**Cruise Speed:** 6.5 Knots Kts. (7 MPH)

**Max Speed:** 7 Knots Kts. (8 MPH)

**Water Capacity:** 150 Gallons

**Holding Tank:** 14 Gal Gallons

**Fuel Capacity:** 60 Gal Gallons

## Accommodations

---

**Total Cabins:** 2

**Sleeps:** 6

**Total Heads:** 1

---

## Hull and Deck Information

---

**Hull Material:** GRP

---

## Engine Information

---

**Engines:** 1

**Manufacturer:** Westerbeke

# PHOTOS

Cockpit and Helm



Helm



Stern



Salon Port Side



**Salon Starboard Side**



**Salon Looking Aft**



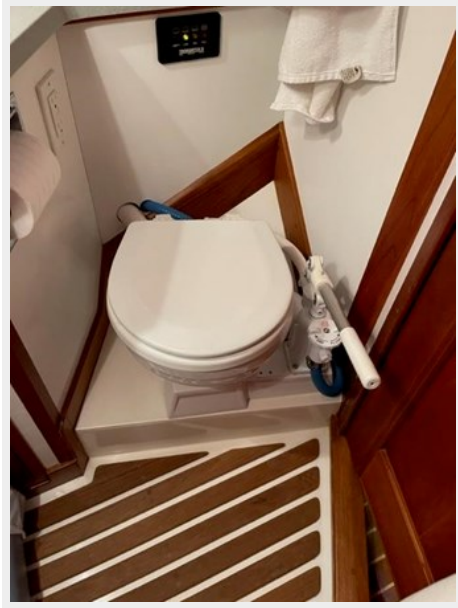
**Fireplace in Salon**



**Master Stateroom**



**Ensuite Head**



**Walk-In Aft Quarter Berth**



**Walk-In Aft Quarter Berth**



**Double Stainless Galley Sink**





**Galley Stove**



**Galley Storage**



**Galley Fridge**



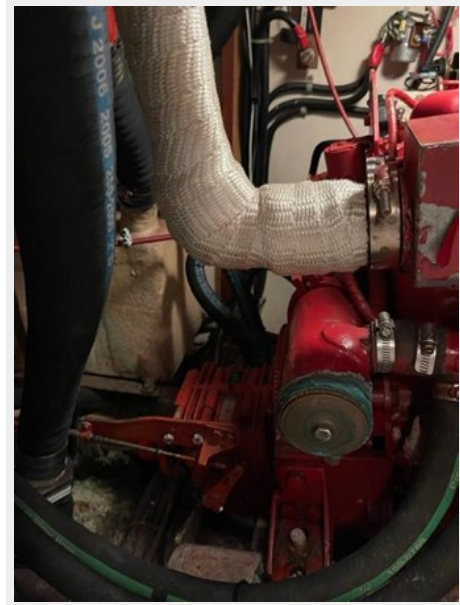
**Instruments in Cockpit**



**Tank Tender**



**Engine**



**Primary Winch**



**Hard Dodger**



Cockpit Bimini



Propshaft



Propshaft



Starboard side



## Sailing



# CONTACTS

---

Andrey Shestakov, leading yacht broker of the sales department of Shestakov Yacht Sales Inc. Shestakov Yacht Sales Inc., the official representative of the Miami/Fort Lauderdale FL headquarters.

## Contact details

---

Email: [andrey@shestakovyachtsales.com](mailto:andrey@shestakovyachtsales.com)

Web: [shestakovyachtsales.com/en/](http://shestakovyachtsales.com/en/)

## Telephones

---

USA: +1(954)274-4435

## Office hours

---

Monday – Saturday: **9:00 - 21:00** EDT

Sunday: **closed**

## Address

---



Harbour Towne Marina, 850 NE 3rd St,  
STE 213, Dania, FL 33004