

INTERLUDE — HUNTER



Builder: HUNTER

Year Built: 2004

Model: Cruising or Racing Sailboat

Price: \$74,500 USD

Location: United States

LOA: 35' 9" (10.87mm)

Beam: 12.33

Max Draft: 5' (1.52mm)

Cruise Speed: 7.5 Knots Kts. (9 MPH)

Max Speed: 8.5 Knots Kts. (10 MPH)

Our experienced yacht broker, Andrey Shestakov, will help you choose and buy a yacht that best suits your needs **Interlude — HUNTER** from our catalogue. Presently, at Shestakov Yacht Sales Inc., we have a wide variety of yachts available on our sale's list. We also work in close contact with all the big yacht manufacturers from all over the world.

If you would like to buy a yacht **Interlude — HUNTER** or would like help answering any questions concerning purchasing, selling or chartering a yacht, please call **+1(954)274-4435**

TABLE OF CONTENTS

TABLE OF CONTENTS	2
SPECIFICATIONS	5
Overview	5
Basic Information	5
Dimensions	5
Speed, Capacities and Weight	5
Accommodations	5
Hull and Deck Information	6
Engine Information	6
PHOTOS	7
2	7
3	7
4	7
5	7
6	7
7	7
8	8
9	8
10	8
11	8
12	8
13	8
14	9
15	9
16	9
17	9
18	9
19	9

20	10
21	10
22	10
23	10
24	10
25	10
26	11
27	11
28	11
29	11
30	11
31	11
32	12
33	12
34	12
35	12
36	12
37	12
38	13
39	13
40	13
41	13
42	13
43	13
44	14
45	14
46	14
47	14
48	14

49	14
50	15
51	15
52	15
53	15
54	15
55	15
56	16
57	16
58	16
59	16
60	16
61	16
62	17
63	17
64	17
65	17
66	17
67	17
CONTACTS	18
Contact details	18
Telephones	18
Office hours	18
Address	18

SPECIFICATIONS

Overview

Interlude is an extremely clean **Hunter Legend 36**, well equipped and very well maintained! Her features include a Two-Cabin One-Head Layout, a **Yanmar 3YM30 Diesel Engine**, a 16000 BTU Reverse Cycle Heat and AC, Excellent Canvas, and a well-equipped Galley and MUCH MORE!

Kato II Davit system

Please check the FULL SPECS for more information and give us a call to schedule a viewing!

Basic Information

Category: Cruising or Racing Sailboat

Model Year: 2004

Year Built: 2004

Country: United States

Dimensions

LOA: 35' 9" (10.87mm)

LWL: 31' 6" (9.6mm)

Beam: 12.33

Max Draft: 5' (1.52mm)

Speed, Capacities and Weight

Cruise Speed: 7.5 Knots Kts. (9 MPH)

Max Speed: 8.5 Knots Kts. (10 MPH)

Water Capacity: 75 Gallons

Holding Tank: 20 Gal Gallons

Fuel Capacity: 37 Gal Gallons

Accommodations

Total Cabins: 2

Total Heads: 1

Hull and Deck Information

Hull Material: Fiberglass

Engine Information

Engines: 1

Manufacturer: Yanmar

Engine Type: Inboard

Fuel Type: Diesel

PHOTOS

2



3



4



5



6



7



8



9



10



11



12



13



14



15



16



17



18



19



20



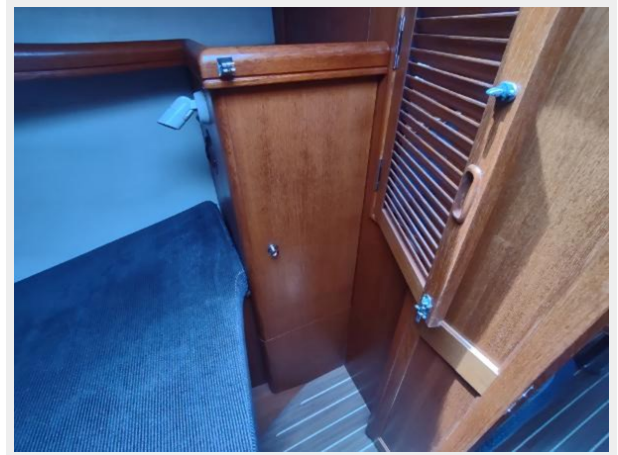
21



22



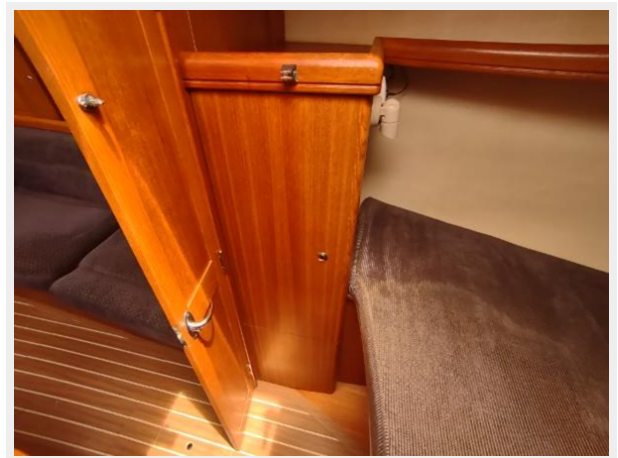
23



24



25



26



27



28



29



30



31



32



33



34



35



36



37



38



39



40



41



42



43



44



45



46



47



48



49



50



51



52



53



54



55



56



57



58



59



60



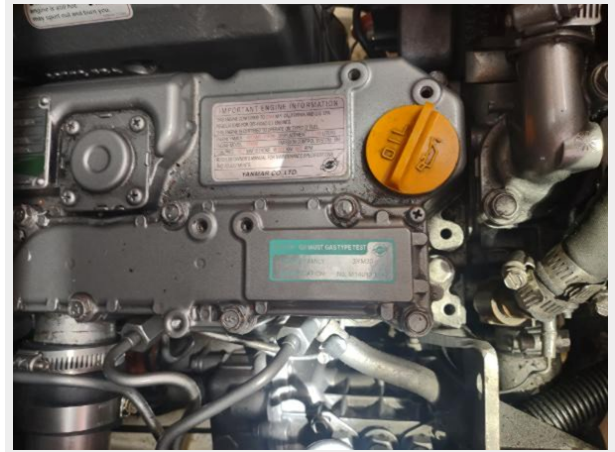
61



62



63



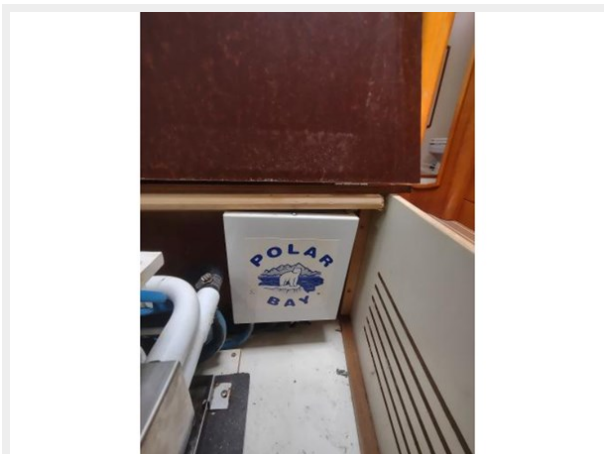
64



65



66



67



CONTACTS

Andrey Shestakov, leading yacht broker of the sales department of Shestakov Yacht Sales Inc. Shestakov Yacht Sales Inc., the official representative of the Miami/Fort Lauderdale FL headquarters.

Contact details

Email: andrey@shestakovyachtsales.com

Web: shestakovyachtsales.com/en/

Telephones

USA: +1(954)274-4435

Office hours

Monday – Saturday: **9:00 - 21:00** EDT

Sunday: **closed**

Address



Harbour Towne Marina, 850 NE 3rd St,
STE 213, Dania, FL 33004