

## GO-N-HOT — DUTCHCRAFT



**Builder:** DUTCHCRAFT

**Year Built:** 2021

**Model:** Motor Yacht

**Price:** \$2,200,000 USD

**Location:** United States

**LOA:** 56' (17.07mm)

**Beam:** 17

**Min Draft:** 2' 6" (0.76mm)

**Max Draft:** 4' (1.22mm)

**Cruise Speed:** 28 Knots Kts. (32 MPH)

**Max Speed:** 34 Knots Kts. (39 MPH)

Our experienced yacht broker, Andrey Shestakov, will help you choose and buy a yacht that best suits your needs **Go-N-Hot — DUTCHCRAFT** from our catalogue. Presently, at Shestakov Yacht Sales Inc., we have a wide variety of yachts available on our sale's list. We also work in close contact with all the big yacht manufacturers from all over the world.

If you would like to buy a yacht **Go-N-Hot — DUTCHCRAFT** or would like help answering any questions concerning purchasing, selling or chartering a yacht, please call **+1(954)274-4435**

# TABLE OF CONTENTS

TABLE OF CONTENTS	2
SPECIFICATIONS	6
Overview	6
Basic Information	6
Dimensions	6
Speed, Capacities and Weight	7
Accommodations	7
Hull and Deck Information	7
Engine Information	7
PHOTOS	8
56_dutchcraft_go-n-hot_aerials_1	8
56_dutchcraft_go-n-hot_aerials_6	8
56_dutchcraft_go-n-hot_aerials_14	8
56_dutchcraft_go-n-hot_aerials_17	8
56_dutchcraft_go-n-hot_aft_deck_1	8
56_dutchcraft_go-n-hot_aft_deck_3	8
56_dutchcraft_go-n-hot_aft_deck_6	9
56_dutchcraft_go-n-hot_bow_2	9
56_dutchcraft_go-n-hot_bow_5	9
56_dutchcraft_go-n-hot_bow_3	9
56_dutchcraft_go-n-hot_cockpit_2	9
56_dutchcraft_go-n-hot_cockpit_4	9
56_dutchcraft_go-n-hot_cockpit_10	10
56_dutchcraft_go-n-hot_cockpit_12	10
56_dutchcraft_go-n-hot_crew_2	10
56_dutchcraft_go-n-hot_dining_2	10
56_dutchcraft_go-n-hot_dining_3	11
56_dutchcraft_go-n-hot_dining_4	11

---

56_dutchcraft_go-n-hot_dining_5	11
56_dutchcraft_go-n-hot_dining_6	11
56_dutchcraft_go-n-hot_dining_7	11
56_dutchcraft_go-n-hot_engine_room_1	11
56_dutchcraft_go-n-hot_engine_room_2	12
56_dutchcraft_go-n-hot_engine_room_3	12
56_dutchcraft_go-n-hot_engine_room_4	12
56_dutchcraft_go-n-hot_engine_room_5	12
56_dutchcraft_go-n-hot_engine_room_7	12
56_dutchcraft_go-n-hot_engine_room_8	12
56_dutchcraft_go-n-hot_engine_room_9	13
56_dutchcraft_go-n-hot_engine_room_10	13
56_dutchcraft_go-n-hot_engine_room_11	13
56_dutchcraft_go-n-hot_engine_room_12	13
56_dutchcraft_go-n-hot_flybridge_1	13
56_dutchcraft_go-n-hot_flybridge_2	13
56_dutchcraft_go-n-hot_flybridge_3	14
56_dutchcraft_go-n-hot_flybridge_4	14
56_dutchcraft_go-n-hot_flybridge_5	14
56_dutchcraft_go-n-hot_flybridge_7	14
56_dutchcraft_go-n-hot_flybridge_8	14
56_dutchcraft_go-n-hot_flybridge_9	14
56_dutchcraft_go-n-hot_flybridge_10	15
56_dutchcraft_go-n-hot_flybridge_11	15
56_dutchcraft_go-n-hot_flybridge_15	15
56_dutchcraft_go-n-hot_flybridge_13	15
56_dutchcraft_go-n-hot_flybridge_16	15
56_dutchcraft_go-n-hot_flybridge_19	15
56_dutchcraft_go-n-hot_galley_1	16

---

---

56_dutchcraft_go-n-hot_galley_3	16
56_dutchcraft_go-n-hot_galley_6	16
56_dutchcraft_go-n-hot_galley_4	16
56_dutchcraft_go-n-hot_galley_8	17
56_dutchcraft_go-n-hot_galley_10	17
56_dutchcraft_go-n-hot_galley_11	17
56_dutchcraft_go-n-hot_lower_helm_3	17
56_dutchcraft_go-n-hot_lower_helm_4	17
56_dutchcraft_go-n-hot_lower_helm_7	17
56_dutchcraft_go-n-hot_master_head_1	18
56_dutchcraft_go-n-hot_master_head_4	18
56_dutchcraft_go-n-hot_master_stateroom_3	18
56_dutchcraft_go-n-hot_master_stateroom_5	18
56_dutchcraft_go-n-hot_master_stateroom_6	19
56_dutchcraft_go-n-hot_port_guest_head_2	19
56_dutchcraft_go-n-hot_port_guest_stateroom_1	19
56_dutchcraft_go-n-hot_port_guest_head_3	19
56_dutchcraft_go-n-hot_port_passageway_1	20
56_dutchcraft_go-n-hot_profiles_2	20
56_dutchcraft_go-n-hot_profiles_5	20
56_dutchcraft_go-n-hot_profiles_4	20
56_dutchcraft_go-n-hot_profiles_15	21
56_dutchcraft_go-n-hot_profiles_13	21
56_dutchcraft_go-n-hot_starboard_guest_head_3	21
56_dutchcraft_go-n-hot_profiles_16	21
56_dutchcraft_go-n-hot_starboard_guest_stateroom_2	22
56_dutchcraft_go-n-hot_starboard_guest_stateroom_3	22
56_dutchcraft_go-n-hot_tender_1	22
56_dutchcraft_go-n-hot_tender_3	22

---

---

CONTACTS	23
-----	-----
Contact details	23
-----	-----
Telephones	23
-----	-----
Office hours	23
-----	-----
Address	23
-----	-----

---

# SPECIFICATIONS

---

## Overview

---

THIS IS THE VESSEL THAT HAS IT ALL

- LONG RANGE
- ENTERTAINING
- FISHING
- DIVING
- PERFECT BAHAMAS YACHT
- DOCK APPEAL
- CONSTRUCTION UPGRADES
- SUPER YACHT TENDER/CHASE VESSEL
- GREAT CHARTER PLATFORM
- READY FOR SURVEY

## Basic Information

---

**Category:** Motor Yacht

**Sub Category:** Motor Yacht

**Model Year:** 2021

**Year Built:** 2021

**Country:** United States

## Dimensions

---

**LOA:** 56' (17.07mm)

**Beam:** 17

**Min Draft:** 2' 6" (0.76mm)

**Max Draft:** 4' (1.22mm)

---

## Speed, Capacities and Weight

---

**Cruise Speed:** 28 Knots Kts. (32 MPH)

**Cruise Speed Range:** 350

**Max Speed:** 34 Knots Kts. (39 MPH)

**Max Speed Range:** 275 Kts.

**Gross Tonnage:** 70 Pounds

**Water Capacity:** 170 Gallons

**Holding Tank:** 85 Gal Gallons

**Fuel Capacity:** 600 Gal Gallons

---

## Accommodations

---

**Total Cabins:** 3

**Total Berths:** 6

**Sleeps:** 6

**Total Heads:** 2

**Crew Cabin:** 2

**Crew Berths:** 2

**Crew Heads:** 1

---

## Hull and Deck Information

---

**Hull Material:** Fiberglass

**Deck Material:** NuTeak

**Hull Configuration:** Semi-Displacement

**Hull Designer:** Dutchcraft

**Interior Designer:** Dutchcraft

---

## Engine Information

---

**Engines:** 2

**Fuel Type:** Diesel

# PHOTOS

56\_dutchcraft\_go-n-hot\_aerials\_1



56\_dutchcraft\_go-n-hot\_aerials\_6



56\_dutchcraft\_go-n-hot\_aerials\_14



56\_dutchcraft\_go-n-hot\_aerials\_17



56\_dutchcraft\_go-n-hot\_aft\_deck\_1



56\_dutchcraft\_go-n-hot\_aft\_deck\_3





56\_dutchcraft\_go-n-hot\_aft\_deck\_6



56\_dutchcraft\_go-n-hot\_bow\_2



56\_dutchcraft\_go-n-hot\_bow\_5



56\_dutchcraft\_go-n-hot\_bow\_3



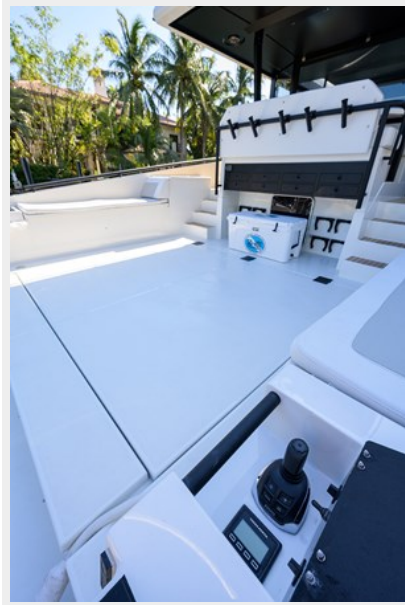
56\_dutchcraft\_go-n-hot\_cockpit\_2



56\_dutchcraft\_go-n-hot\_cockpit\_4



56\_dutchcraft\_go-n-hot\_cockpit\_10



56\_dutchcraft\_go-n-hot\_cockpit\_12



56\_dutchcraft\_go-n-hot\_crew\_2



56\_dutchcraft\_go-n-hot\_dining\_2



56\_dutchcraft\_go-n-hot\_dining\_3



56\_dutchcraft\_go-n-hot\_dining\_4



56\_dutchcraft\_go-n-hot\_dining\_5



56\_dutchcraft\_go-n-hot\_dining\_6



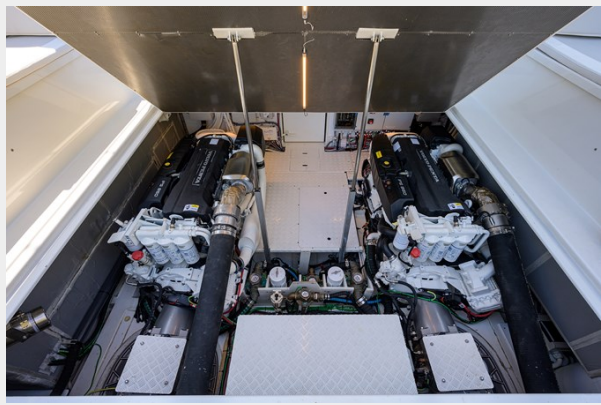
56\_dutchcraft\_go-n-hot\_dining\_7



56\_dutchcraft\_go-n-hot\_engine\_room\_1



56\_dutchcraft\_go-n-hot\_engine\_room\_2



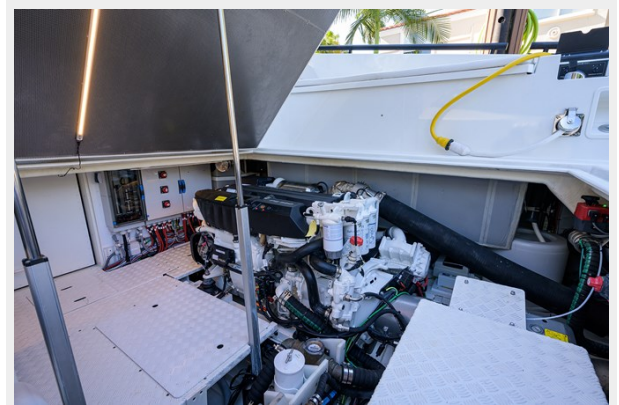
56\_dutchcraft\_go-n-hot\_engine\_room\_3



56\_dutchcraft\_go-n-hot\_engine\_room\_4



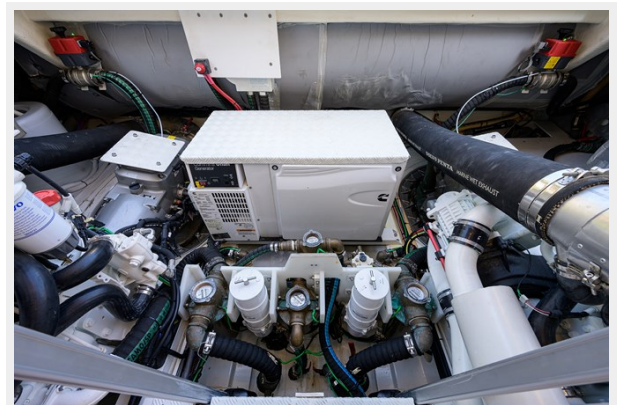
56\_dutchcraft\_go-n-hot\_engine\_room\_5



56\_dutchcraft\_go-n-hot\_engine\_room\_7



56\_dutchcraft\_go-n-hot\_engine\_room\_8



56\_dutchcraft\_go-n-hot\_engine\_room\_9



56\_dutchcraft\_go-n-hot\_engine\_room\_10



56\_dutchcraft\_go-n-hot\_engine\_room\_11



56\_dutchcraft\_go-n-hot\_engine\_room\_12



56\_dutchcraft\_go-n-hot\_flybridge\_1



56\_dutchcraft\_go-n-hot\_flybridge\_2



56\_dutchcraft\_go-n-hot\_flybridge\_3



56\_dutchcraft\_go-n-hot\_flybridge\_4



56\_dutchcraft\_go-n-hot\_flybridge\_5



56\_dutchcraft\_go-n-hot\_flybridge\_7



56\_dutchcraft\_go-n-hot\_flybridge\_8



56\_dutchcraft\_go-n-hot\_flybridge\_9



56\_dutchcraft\_go-n-hot\_flybridge\_10



56\_dutchcraft\_go-n-hot\_flybridge\_11



56\_dutchcraft\_go-n-hot\_flybridge\_15



56\_dutchcraft\_go-n-hot\_flybridge\_13



56\_dutchcraft\_go-n-hot\_flybridge\_16



56\_dutchcraft\_go-n-hot\_flybridge\_19



56\_dutchcraft\_go-n-hot\_galley\_1



56\_dutchcraft\_go-n-hot\_galley\_3



56\_dutchcraft\_go-n-hot\_galley\_6



56\_dutchcraft\_go-n-hot\_galley\_4





56\_dutchcraft\_go-n-hot\_galley\_8



56\_dutchcraft\_go-n-hot\_galley\_10



56\_dutchcraft\_go-n-hot\_galley\_11



56\_dutchcraft\_go-n-hot\_lower\_helm\_3



56\_dutchcraft\_go-n-hot\_lower\_helm\_4



56\_dutchcraft\_go-n-hot\_lower\_helm\_7



56\_dutchcraft\_go-n-hot\_master\_head\_1



56\_dutchcraft\_go-n-hot\_master\_head\_4



56\_dutchcraft\_go-n-hot\_master\_stateroom\_3



56\_dutchcraft\_go-n-hot\_master\_stateroom\_5



56\_dutchcraft\_go-n-hot\_master\_stateroom\_6



56\_dutchcraft\_go-n-hot\_port\_guest\_head\_2



56\_dutchcraft\_go-n-hot\_port\_guest\_stateroom\_1



56\_dutchcraft\_go-n-hot\_port\_guest\_head\_3



56\_dutchcraft\_go-n-hot\_port\_passageway\_1



56\_dutchcraft\_go-n-hot\_profiles\_2



56\_dutchcraft\_go-n-hot\_profiles\_5

56\_dutchcraft\_go-n-hot\_profiles\_4



56\_dutchcraft\_go-n-hot\_profiles\_15

56\_dutchcraft\_go-n-hot\_profiles\_13



56\_dutchcraft\_go-n-hot\_starboard\_guest\_head\_3

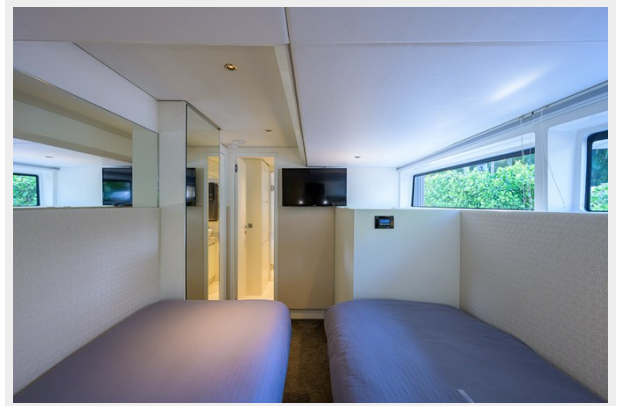
56\_dutchcraft\_go-n-hot\_profiles\_16



**56\_dutchcraft\_go-n-hot\_starboard\_guest\_stateroom\_2**



**56\_dutchcraft\_go-n-hot\_starboard\_guest\_stateroom\_3**



**56\_dutchcraft\_go-n-hot\_tender\_1**



**56\_dutchcraft\_go-n-hot\_tender\_3**



# CONTACTS

---

Andrey Shestakov, leading yacht broker of the sales department of Shestakov Yacht Sales Inc. Shestakov Yacht Sales Inc., the official representative of the Miami/Fort Lauderdale FL headquarters.

## Contact details

---

Email: [andrey@shestakovyachtsales.com](mailto:andrey@shestakovyachtsales.com)

Web: [shestakovyachtsales.com/en/](http://shestakovyachtsales.com/en/)

## Telephones

---

USA: +1(954)274-4435

## Office hours

---

Monday – Saturday: **9:00 - 21:00** EDT

Sunday: **closed**

## Address

---



Harbour Towne Marina, 850 NE 3rd St,  
STE 213, Dania, FL 33004