

CROWN GOOSE — ELCO MARINE



Builder: ELCO MARINE

Year Built: 1937

Model: Classic

Price: \$65,000 USD

Location: United States

LOA: 53' (16.15mm)

Beam: 11.5

Max Draft: 3' 6" (1.07mm)

Our experienced yacht broker, Andrey Shestakov, will help you choose and buy a yacht that best suits your needs **Crown Goose — ELCO MARINE** from our catalogue. Presently, at Shestakov Yacht Sales Inc., we have a wide variety of yachts available on our sale's list. We also work in close contact with all the big yacht manufacturers from all over the world.

If you would like to buy a yacht **Crown Goose — ELCO MARINE** or would like help answering any questions concerning purchasing, selling or chartering a yacht, please call **+1(954)274-4435**

TABLE OF CONTENTS

TABLE OF CONTENTS	2
SPECIFICATIONS	4
Overview	4
Basic Information	5
Dimensions	5
Speed, Capacities and Weight	5
Accommodations	5
Hull and Deck Information	5
Engine Information	5
PHOTOS	6
Helm	6
Helm seating I	6
Image 22	6
On Deck lounge	6
Image 17	7
Aft Seating	7
Galley 1	7
Salon Starboard	7
Galley 2	8
Forward quarters	8
Master Stateroom 1	8
Master Stateroom 2	8
Guest bunk port	8
Guest Stateroom port	8
Head	9
Salon	9
Engine Room	9
Generator	9

Hauled out	10
Transom	10
CONTACTS	11
Contact details	11
Telephones	11
Office hours	11
Address	11

SPECIFICATIONS

Overview

The Crown Goose is an excellent example of the luxury cruising and the overall commuter yachting experience from the late 1930's. She is equipped with several staterooms with up to date comforts for cruising and relaxing on the decks. She is outfitted with all the cruising comforts and the layout below accommodates many guests. Recent survey is available for serious inquiries.

Interior Description

The Commuter was originally designed for ferrying a crew and 4-6 guests with ample room for enjoying the fine amenities of such a vessel. Forward stateroom consist of two bunks to starboard and fine wooden drawer and basin to port. The full beam galley is aft of the forward cabin and spacious enough for a full sized stainless sink, Princess stove, full size refrigerator/freezer, microwave and cabinetry. Access to the engine room is from within the galley. The breaker panel is to port where classic steps and handrail lead up to the main salon. The real beauty and appreciation for Elco's finish work can be found in the main salon. Access from the deck is via doors on either side of the salon. Panoramic views are throughout the main salon with windows extending the full length as well as forward. Classic furnishings inside the main salon consist of mahogany trim cabinetry, full size bar, original drop leaf table and twin upholstered armchairs. From within the main salon you step down into the companionway leading to additional staterooms. Moving aft from the main salon are guest cabins to port and starboard, each consisting of a single bunk, cabinetry, finish work and original port windows to the outside. Aft of the two staterooms to the port is the guest head and master head to the starboard. Furthest aft of the interior is an elegant master stateroom with a queen bed, mahogany chest, 3 section mirror and hanging closet.

Exterior Floor Plan

Forward on the bow deck one will find original hardware that is true to the beauty Elco incorporated in what are known as the finest yachts of American history from the early to mid 1900's. The fore-deck has a classic cockpit seat with artful upholstery fitting the time period of this vessel. Aft of the cockpit seat are matching teak sun chairs. The helm consists of an open flybridge with beautifully restored and maintained hardware. The oversized compass and lever controls confirm the care and restoration process found in the Crown Goose. A tan sunbrella tarp protects the crew and is held fast with teak batons and chrome plated tubing. Overhead is the mast. Aft of the helm deck is an open sundeck housing an original dockbox and sunning chair to starboard and a 1935 classic dingy (9') and davit to port. The aft deck is open and spacious with sunbrella covering matching the helm's tarp and cover. Seating consists of classic furnishing true to the Elco heritage.

Basic Information

Category: Classic

Sub Category: Classic

Model Year: 1937

Year Built: 1937

Country: United States

Dimensions

LOA: 53' (16.15mm)

Beam: 11.5

Max Draft: 3' 6" (1.07mm)

Speed, Capacities and Weight

Water Capacity: 125 Gallons

Holding Tank: 40 Gal Gallons

Fuel Capacity: 240 Gal Gallons

Accommodations

Total Cabins: 3

Hull and Deck Information

Hull Material: Wood

Deck Material: Teak

Engine Information

Engines: 2

Manufacturer: Detroit Diesel

Engine Type: Inboard

Fuel Type: Diesel

PHOTOS

Helm



Helm seating I



Image 22



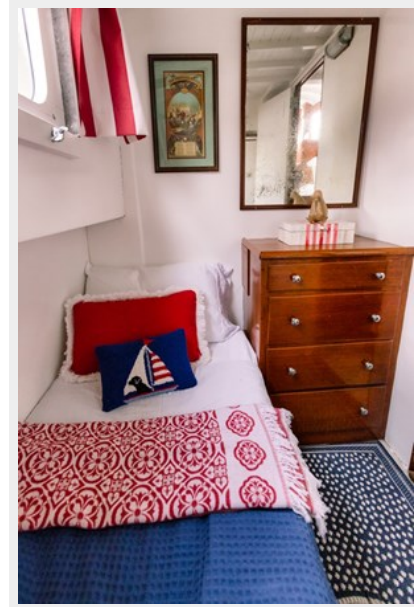
On Deck lounger



Aft Seating



Image 17



Salon Starboard



Galley 1



Galley 2



Forward quarters



Master Stateroom 1



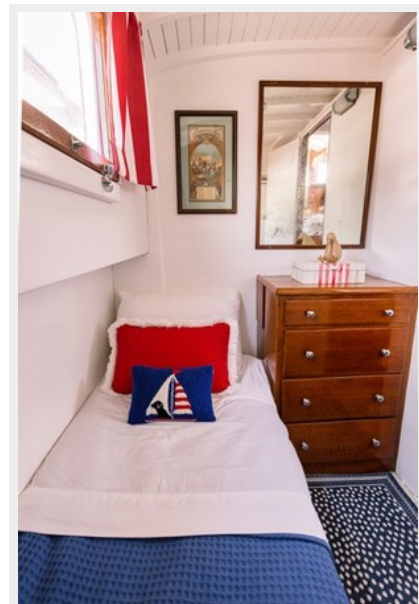
Master Stateroom 2



Guest bunk port



Guest Stateroom port



Head



Salon



Engine Room



Generator



Hauled out



Transom



CONTACTS

Andrey Shestakov, leading yacht broker of the sales department of Shestakov Yacht Sales Inc. Shestakov Yacht Sales Inc., the official representative of the Miami/Fort Lauderdale FL headquarters.

Contact details

Email: andrey@shestakovyachtsales.com

Web: shestakovyachtsales.com/en/

Telephones

USA: +1(954)274-4435

Office hours

Monday – Saturday: **9:00 - 21:00** EDT

Sunday: **closed**

Address



Harbour Towne Marina, 850 NE 3rd St,
STE 213, Dania, FL 33004