

## CROWN GOOSE — ELCO MARINE



**Судостроитель:** ELCO MARINE

**Год постройки:** 1937

**Модель:** Classic

**Цена:** \$65,000 USD

**Местонахождение:** United States

**Длина общая:** 53' (16.15m)

**Ширина:** 11.5

**Макс. осадка:** 3' 6" (1.07m)

Купить **Crown Goose — ELCO MARINE** а также выбрать подходящую вам яхту из нашего каталога яхт вам поможет опытный яхтенный брокер Андрей Шестаков. На сегодняшний день компания **Shestakov Yacht Sales Inc.** имеет большое количество яхт в собственном списке продаж, а также тесно сотрудничает со всеми крупными яхтенными производителями по всему миру.

Для того чтобы купить яхту **Crown Goose — ELCO MARINE** а также проконсультироваться по любому вопросу связанному с покупкой, продажей, чартером яхт позвоните по телефону **+7(918)465-66-44**.

# ОГЛАВЛЕНИЕ

---

ОГЛАВЛЕНИЕ	2
ХАРАКТЕРИСТИКИ	4
Обзор	4
Основная информация	5
Размеры	5
Скорость, вместимость и масса	5
Размещение	5
Корпус и палуба	5
Информация о двигателе	5
ФОТОГРАФИИ	6
Helm	6
Helm seating I	6
Image 22	6
On Deck lounge	6
Image 17	7
Aft Seating	7
Galley 1	7
Salon Starboard	7
Galley 2	8
Forward quarters	8
Master Stateroom 1	8
Master Stateroom 2	8
Guest bunk port	8
Guest Stateroom port	8
Head	9
Salon	9
Engine Room	9
Generator	9

---

Hauled out	10
Transom	10
КОНТАКТЫ	11
Контактная информация	11
Телефоны	11
Время работы	11
Адрес	11

---

# ХАРАКТЕРИСТИКИ

---

## Обзор

---

The Crown Goose is an excellent example of the luxury cruising and the overall commuter yachting experience from the late 1930's. She is equipped with several staterooms with up to date comforts for cruising and relaxing on the decks. She is outfitted with all the cruising comforts and the layout below accommodates many guests. Recent survey is available for serious inquiries.

### Interior Description

The Commuter was originally designed for ferrying a crew and 4-6 guests with ample room for enjoying the fine amenities of such a vessel. Forward stateroom consist of two bunks to starboard and fine wooden drawer and basin to port. The full beam galley is aft of the forward cabin and spacious enough for a full sized stainless sink, Princess stove, fullsize refrigerator/freezer, microwave and cabinetry. Access to the engine room is from within the galley. The breaker panel is to port where classic steps and handrail lead up to the main salon. The real beauty and appreciation for Elco's finish work can be found in the main salon. Access from the deck is via doors on either side of the salon. Panoramic views are throughout the main salon with windows extending the full length as well as forward. Classic furnishings inside the main salon consist of mahogany trim cabinetry, full size bar, original drop leaf table and twin upholstered armchairs. From within the main salon you step down into the companionway leading to additional staterooms. Moving aft from the main salon are guest cabins to port and starboard, each consisting of a single bunk, cabinetry, finish work and original port windows to the outside. Aft of the two staterooms to the port is the guest head and master head to the starboard. Furthest aft of the interior is an elegant master stateroom with a queen bed, mahogany chest, 3 section mirror and hanging closet.

### Exterior Floor Plan

Forward on the bow deck one will find original hardware that is true to the beauty Elco incorporated in what are known as the finest yachts of American history from the early to mid 1900's. The fore-deck has a classic cockpit seat with artful upholstery fitting the time period of this vessel. Aft of the cockpit seat are matching teak sun chairs. The helm consists of an open flybridge with beautifully restored and maintained hardware. The oversized compass and lever controls confirm the care and restoration process found in the Crown Goose. A tan sunbrella tarp protects the crew and is held fast with teak batons and chrome plated tubing. Overhead is the mast. Aft of the helm deck is an open sun deck housing an original dockbox and sunning chair to starboard and a 1935 classic dingy (9') and davit to port. The aft deck is open and spacious with sunbrella covering matching the helm's tarp and cover. Seating consists of classic furnishing true to the Elco heritage.

## Основная информация

Тип судна: Classic

Подкатегория: Classic

Модельный год: 1937

Год постройки: 1937

Страна: United States

## Размеры

Длина общая: 53' (16.15mm)

Ширина: 11.5

Макс. осадка: 3' 6" (1.07mm)

## Скорость, вместимость и масса

Вместимость воды: 125 Gallons

Вместимость сточного бака: 40 Gal  
Gallons

Объем топливного бака: 240 Gal Gallons

## Размещение

Всего кают: 3

## Корпус и палуба

Материал корпуса: Wood

Материал палубы: Teak

## Информация о двигателе

Двигатели: 2

Производитель: Detroit Diesel

Тип двигателя: Inboard

Тип топлива: Diesel

# ФОТОГРАФИИ

Helm



Helm seating I



Image 22



On Deck lounge





**Aft Seating**



**Image 17**



**Salon Starboard**



**Galley 1**



**Galley 2**



**Forward quarters**



**Master Stateroom 1**



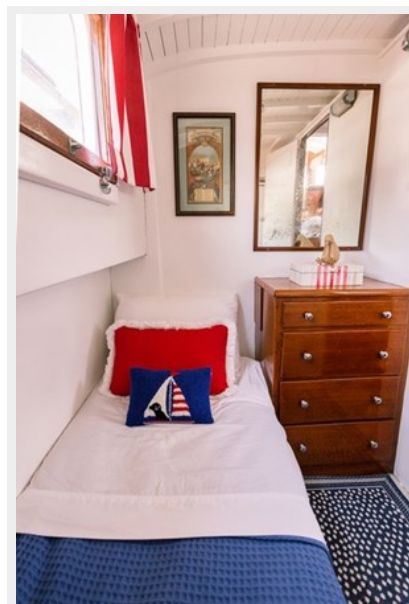
**Master Stateroom 2**



**Guest bunk port**



**Guest Stateroom port**





**Head**



**Salon**



**Engine Room**



**Generator**



**Hauled out**



**Transom**



# КОНТАКТЫ

---

Андрей Шестаков (Andrey Shestakov) – ведущий яхтенный брокер отдела продаж яхт и судов компании Shestakov Yacht Sales Inc. Официальный представитель Shestakov Yacht Sales Inc. для русскоговорящих клиентов в центральном офисе компании в Майами/Форт Лодердейл/Флорида/США.

## Контактная информация

---

Email: [andrey@shestakovyachtsales.com](mailto:andrey@shestakovyachtsales.com)

Web: [shestakovyachtsales.com](http://shestakovyachtsales.com)

## Телефоны

---

Краснодарский край: **+7(918)465-66-44**

США, Майами, Флорида: **+1(954)274-4435**

## Время работы

---

Понедельник – Суббота: **9:00 - 21:00**  
EDT

Воскресенье: **Закрето**

## Адрес

---



Harbour Towne Marina, 850 NE 3rd St,  
STE 213, Dania, FL 33004