

## MANATEA — PERI YACHTS



**Builder:** PERI YACHTS

**Year Built:** 2008

**Model:** Commercial Vessel

**Price:** €1,900,000 EUR

**Location:** France

**LOA:** 93' 11" (28.61mm)

**Beam:** 21.12

**Max Draft:** 3' 10" (1.15mm)

**Cruise Speed:** 17 Knots Kts. (20 MPH)

**Max Speed:** 22 Knots Kts. (25 MPH)

Our experienced yacht broker, Andrey Shestakov, will help you choose and buy a yacht that best suits your needs **MANATEA — PERI YACHTS** from our catalogue. Presently, at Shestakov Yacht Sales Inc., we have a wide variety of yachts available on our sale's list. We also work in close contact with all the big yacht manufacturers from all over the world.

If you would like to buy a yacht **MANATEA — PERI YACHTS** or would like help answering any questions concerning purchasing, selling or chartering a yacht, please call **+1(954)274-4435**

# TABLE OF CONTENTS

TABLE OF CONTENTS	2
SPECIFICATIONS	4
Overview	4
Basic Information	5
Dimensions	5
Speed, Capacities and Weight	5
Accommodations	5
Hull and Deck Information	5
Engine Information	6
PHOTOS	7
Exterior view	7
Exterior view	7
Bow area	7
Aft view	7
Front deck	7
Flybridge	7
Flybridge	8
Front Sunbed	8
Aft deck	8
Saloon	8
Saloon	8
Dining table	8
Dining table	9
Galley	9
Master room	9
Master bathroom	9
VIP cabin	9
Interior corridor	9

Twin 1	10
Twin 2	10
Exterior corridor	10
Wheelhouse	10
CONTACTS	11
Contact details	11
Telephones	11
Office hours	11
Address	11

# SPECIFICATIONS

---

## Overview

---

Cutting through the waves with its sleek, aerodynamic design, the PERI 29 motor-yacht stands out as the lightest and fastest in the Peri lineup. This high-tech marvel offers thrilling speed and excellent handling. Known for being a top family charter yacht in the Mediterranean, the PERI 29 received a comprehensive refit in 2022, leaving it in pristine condition and further boosting its appeal to seasoned charter guests.

The PERI 29 boasts vast exterior and interior spaces, representing a new level of luxury that is smooth, uncluttered, and highly alluring. Its wide teak-laid decks and expansive flybridge offer breathtaking sea views. The award-winning contemporary interior features pearl grey leather, light-colored floors, and sophisticated lighting.

This yacht provides a 4-cabin layout (including a Master suite, VIP suite, and two twin guest suites), comfortably accommodating 8 sleeping guests and up to 12 cruising guests. All cabins come with entertainment systems, plasma TVs, and ensuite bathrooms. The open-plan saloon and dining area feature large windows for panoramic views, ideal for relaxation, fine dining, and entertainment. The yacht is equipped with air conditioning and Wi-Fi throughout.

The extensive deck areas include a spacious, sheltered aft deck perfect for al fresco dining and entertaining, along with a large flybridge equipped with sunbathing areas, sun pads, a wet bar, and an outdoor dining space, all protected by a retractable Bimini top when needed.

This exceptional PERI 29 yacht is meticulously maintained, with a professional crew on board year-round, and is RINA classed and MCA compliant. Its prime mooring, conveniently close to Nice-Cote d'Azur International Airport on the French Riviera, is available for takeover by separate negotiation.

Guest accommodation: 4 cabins that can host guests (2 designed as doubles, 2 as twins)

2 Onan 22,5KW generators are onboard with both PS and SB hours at 5650H

Steering system: Employs BCS Steer 2000

Equipped with a MUIR VC 4000 windlass

Air Conditioning system: VEBASTO with a capacity of 70000 BTU

Engine room is equipped with a FM200 fire-fighting facility

In case of a central fire: MARINE ELEC is in place

## Basic Information

Category: Commercial Vessel	Model Year: 2008
Year Built: 2008	Country: France

## Dimensions

LOA: 93' 11" (28.61mm)	Beam: 21.12
Max Draft: 3' 10" (1.15mm)	

## Speed, Capacities and Weight

Cruise Speed: 17 Knots Kts. (20 MPH)	Cruise Speed Range: 300
Max Speed: 22 Knots Kts. (25 MPH)	Gross Tonnage: 95.71 Pounds
Water Capacity: 1800 Gallons	Fuel Capacity: 1849.2 Gal Gallons
Fuel Consumption: 105.67 Gal Gallons	

## Accommodations

Total Cabins: 4	Total Berths: 6
Sleeps: 8	Crew Cabin: 4
Crew Berths: 4	

## Hull and Deck Information

Hull Material: Epoxy Composite	Deck Material: GRP
Hull Configuration: Planing	Hull Color: Green
Interior Designer: Scaro design	

---

## Engine Information

---

**Engines:** 2

**Manufacturer:** MTU

**Engine Type:** Inboard



# PHOTOS

**Exterior view**



**Exterior view**



**Bow area**



**Aft view**



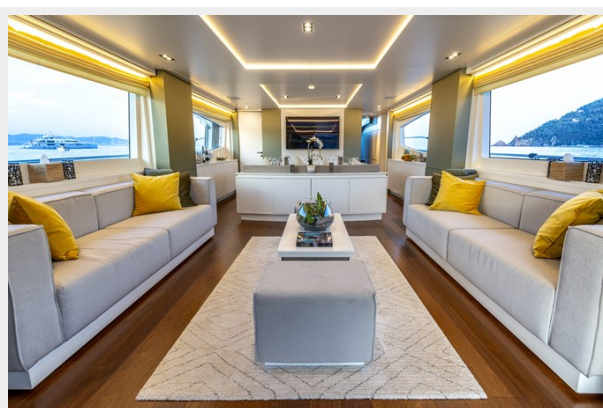
**Front deck**



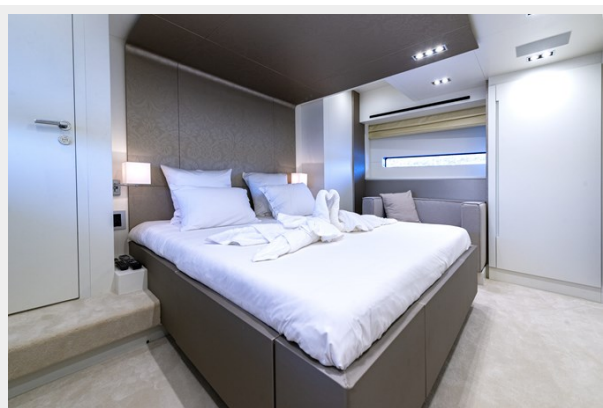
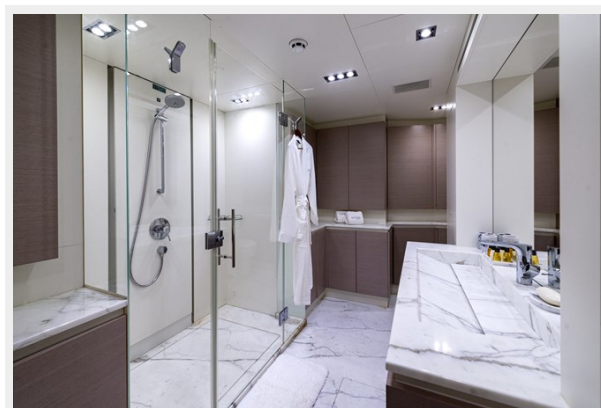
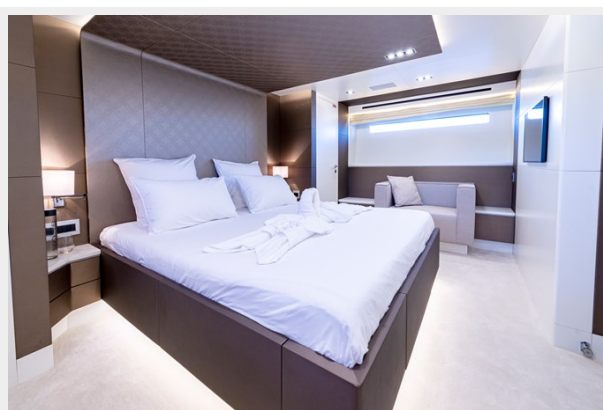
**Flybridge**





**Flybridge****Front Sunbed****Aft deck****Saloon****Saloon****Dining table**



**Dining table****Galley****Master room****Master bathroom****VIP cabin****Interior corridor**

**Twin 1**



**Twin 2**



**Exterior corridor**



**Wheelhouse**



# CONTACTS

---

Andrey Shestakov, leading yacht broker of the sales department of Shestakov Yacht Sales Inc. Shestakov Yacht Sales Inc., the official representative of the Miami/Fort Lauderdale FL headquarters.

## Contact details

---

Email: **andrey@shestakovyachtsales.com**

Web: [shestakovyachtsales.com/en/](http://shestakovyachtsales.com/en/)

## Telephones

---

USA: **+1(954)274-4435**

## Office hours

---

Monday – Saturday: **9:00 - 21:00 EDT**

Sunday: **closed**

## Address

---



Harbour Towne Marina, 850 NE 3rd St,  
STE 213, Dania, FL 33004