

# DREAMLINE 35 — DL YACHTS - DREAMLINE



**Builder:** DL YACHTS - DREAMLINE

**Year Built:** 2025

**Model:** Semi-Displacement

**Price:** €14,100,000 EUR

**Location:** Italy

**LOA:** 117' 10" (35.9mm)

**Beam:** 24.5

**Min Draft:** 4' 11" (1.49mm)

**Max Draft:** 7' 3" (2.2mm)

**Cruise Speed:** 12 Knots Kts. (14 MPH)

**Max Speed:** 22 Knots Kts. (25 MPH)

Our experienced yacht broker, Andrey Shestakov, will help you choose and buy a yacht that best suits your needs **DREAMLINE 35 — DL YACHTS - DREAMLINE** from our catalogue. Presently, at Shestakov Yacht Sales Inc., we have a wide variety of yachts available on our sale's list. We also work in close contact with all the big yacht manufacturers from all over the world.

If you would like to buy a yacht **DREAMLINE 35 — DL YACHTS - DREAMLINE** or would like help answering any questions concerning purchasing, selling or chartering a yacht, please call **+1(954)274-4435**

# TABLE OF CONTENTS

TABLE OF CONTENTS	2
SPECIFICATIONS	4
Overview	4
Basic Information	4
Dimensions	4
Speed, Capacities and Weight	5
Accommodations	5
Hull and Deck Information	5
Engine Information	5
PHOTOS	6
DL35 Sistership sundeck	6
DL 35 Sistership running	6
Sistership (11)	6
DL35 Sistership aftdeck dining	6
Sistership (5)	6
Sistership (6)	6
Sistership (7)	7
Sistership (9)	7
Sistership (13)	7
Sistership (15)	7
Sistership (16)	7
Sistership (17)	7
Sistership (18)	8
Sistership (19)	8
Sistership (20)	8
Sistership (14)	8
Sistership (4)	8
CONTACTS	9

---

Contact details	9
Telephones	9
Office hours	9
Address	9

# SPECIFICATIONS

---

## Overview

---

A 35m that packs a punch, sophisticated styling and a superbly optimised layout for socialising and guest comfort. Italian design at its best from the pens of Arrabito Design and Team 4 Design, elegant with a touch of opulence for stylish exterior lines and an interior that is welcoming with wow factor using a blend of warm cream tones and rich dark accents, with marble, stitched panelling, and mosaic features.

The DL35 sports a spacious sundeck with bar, dining table, sunlounging areas, jacuzzi and retractable roof. On the main deck aft is a further exterior dining area leading into the elegant main salon, formal interior dining with fold down balcony feature and forward to the Master suite. The master suite does not disappoint with panoramic views and skylights over the bed, access to a private exterior seating/sunpad area, a walk-in closet and a bathroom finished in marble.

On the lower deck are 4 excellent guest suites. 2 VIP doubles, 1 double and 1 twin for a total of 10 guests sleeping on board.

A proven platform for charter and private use, this will be the 2<sup>nd</sup> yacht built of this model, the interior soft furnishing colours and style can still be chosen and there are 3 options for main engines (2x MTU 2600 EUR 14,100,000, 2 x MTU 1935 EUR 13,350,000 or Hybrid pricing on request).

## Basic Information

---

**Category:** Semi-Displacement

**Sub Category:** Semi-Displacement

**Model Year:** 2025

**Year Built:** 2025

**Country:** Italy

## Dimensions

---

**LOA:** 117' 10" (35.9mm)

**LWL:** 97' (29.57mm)

**Beam:** 24.5

**Min Draft:** 4' 11" (1.49mm)

**Max Draft:** 7' 3" (2.2mm)

---

## Speed, Capacities and Weight

---

**Cruise Speed:** 12 Knots Kts. (14 MPH)

**Cruise Speed Range:** 1500

**Max Speed:** 22 Knots Kts. (25 MPH)

**Gross Tonnage:** 207 Pounds

**Water Capacity:** 2200 Gallons

**Holding Tank:** 488.72 Gal Gallons

**Fuel Capacity:** 4490.92 Gal Gallons

---

## Accommodations

---

**Total Cabins:** 5

**Total Berths:** 10

**Sleeps:** 10

**Total Heads:** 5

**Crew Cabin:** 6

**Crew Berths:** 6

**Crew Heads:** 2

---

## Hull and Deck Information

---

**Hull Material:** GRP

**Deck Material:** Teak

**Hull Configuration:** Monohull

**Hull Color:** WHITE WITH BLACK ACCENTS

**Hull Designer:** Arrabito Naval Architects

**Exterior Designer:** Team4Design

**Interior Designer:** Team4Design

---

## Engine Information

---

**Engines:** 2

**Manufacturer:** MTU

**Engine Type:** Inboard

**Fuel Type:** Diesel

# PHOTOS

**DL 35 Sistership running**



**DL35 Sistership sundeck**



**Sistership (11)**



**DL35 Sistership aftdeck dining**



**Sistership (5)**



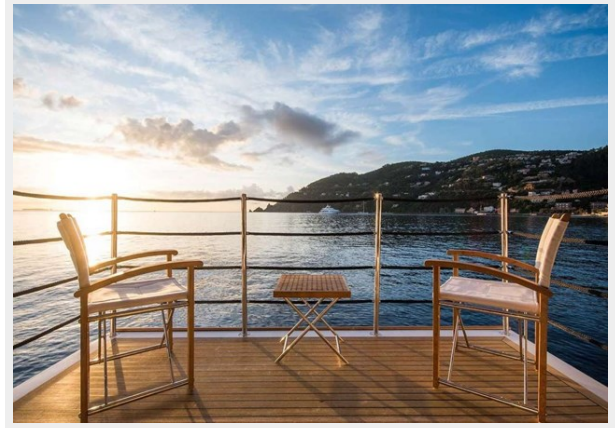
**Sistership (6)**



**Sistership (7)**



**Sistership (9)**



**Sistership (13)**



**Sistership (15)**



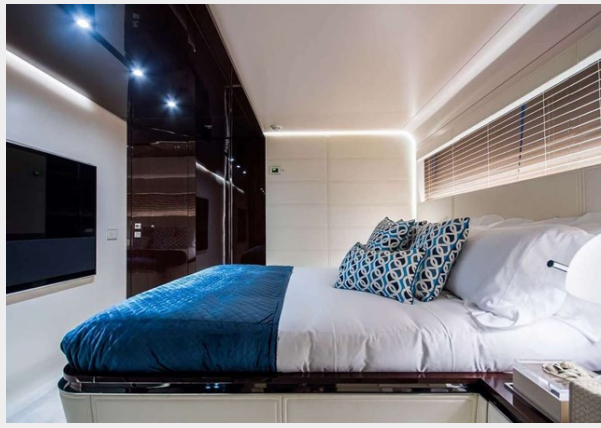
**Sistership (16)**



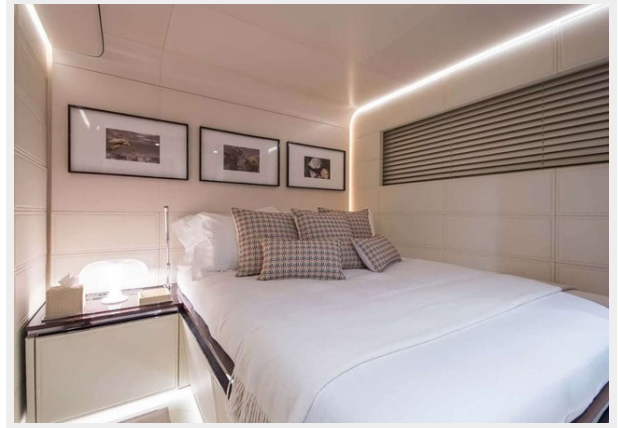
**Sistership (17)**



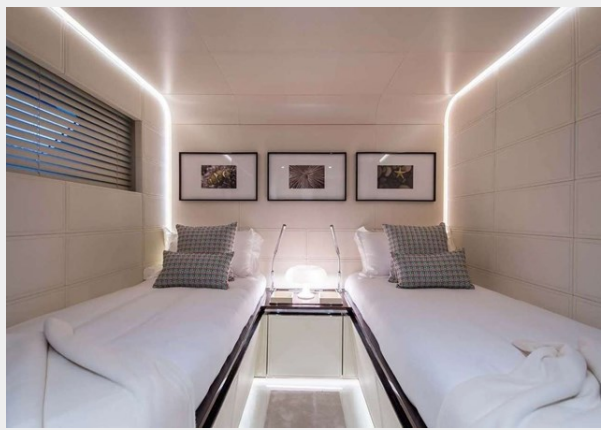
**Sistership (18)**



**Sistership (19)**



**Sistership (20)**



**Sistership (14)**



**Sistership (4)**





# CONTACTS

---

Andrey Shestakov, leading yacht broker of the sales department of Shestakov Yacht Sales Inc. Shestakov Yacht Sales Inc., the official representative of the Miami/Fort Lauderdale FL headquarters.

## Contact details

---

Email: [andrey@shestakovyachtsales.com](mailto:andrey@shestakovyachtsales.com)

Web: [shestakovyachtsales.com/en/](http://shestakovyachtsales.com/en/)

## Telephones

---

USA: +1(954)274-4435

## Office hours

---

Monday – Saturday: **9:00 - 21:00** EDT

Sunday: **closed**

## Address

---



Harbour Towne Marina, 850 NE 3rd St,  
STE 213, Dania, FL 33004