

## M TOGETHER — FERRETTI CUSTOM LINE



**Builder:** FERRETTI CUSTOM LINE

**Year Built:** 2023

**Model:** Semi-Displacement

**Price:** €20,500,000 EUR

**Location:** Italy

**LOA:** 137' 2" (41.8mm)

**Beam:** 26.57

**Max Draft:** 7' 8" (2.33mm)

**Cruise Speed:** 13 Knots Kts. (15 MPH)

**Max Speed:** 16 Knots Kts. (18 MPH)

Our experienced yacht broker, Andrey Shestakov, will help you choose and buy a yacht that best suits your needs **M TOGETHER — FERRETTI CUSTOM LINE** from our catalogue. Presently, at Shestakov Yacht Sales Inc., we have a wide variety of yachts available on our sale's list. We also work in close contact with all the big yacht manufacturers from all over the world.

If you would like to buy a yacht **M TOGETHER — FERRETTI CUSTOM LINE** or would like help answering any questions concerning purchasing, selling or chartering a yacht, please call **+1(954)274-4435**

# TABLE OF CONTENTS

TABLE OF CONTENTS	2
SPECIFICATIONS	4
Overview	4
Basic Information	5
Dimensions	5
Speed, Capacities and Weight	5
Accommodations	5
Hull and Deck Information	6
Engine Information	6
PHOTOS	7
Navetta 42 Running shot	7
Navetta 42 running shot	7
Navetta 42 running shot	7
Main Cockpit Navetta 42 M Together	7
Main Cockpit	7
Upper Deck external area	7
Sun Deck	8
Sun Deck 2	8
Sun Deck 3 Navetta 42 M Together	8
Sun Deck 4 Navetta 42 M Together	8
Sun Deck pool Navetta 42 M Together	8
Master cabin bathroom	8
Master Cabin 1	9
Master cabin 2	9
Master Cabin 3	9
Master cabin office	9
VIP cabin	9
VIP Cabin Navetta 42 M Together	9

VIP Cabin	10
VIP cabin Bathroom	10
Main Salon	10
Main Salon	10
Main salon	10
Main Salon	10
Upper Salon	11
Upper Salon	11
Upper Salon	11
Upper Salon	11
Main Galley	11
Main Galley	11
CONTACTS	12
Contact details	12
Telephones	12
Office hours	12
Address	12

# SPECIFICATIONS

## Overview

**Vessel Name: M TOGETHER** The vessel M TOGETHER is a magnificent piece of maritime engineering built in the year 2023 by the renowned Italian shipbuilding company - Ferretti Custom Line. This floating beauty has an imposing length of 41.8 meters or 137 feet 2 inches, making it one of the most luxurious and sizeable motor yachts available. Constructed using state-of-the-art technology and cutting-edge design, it is a standout in the NAVETTA 42 model series and it's a pride of the prestigious Ferretti Custom Line fleet. The exterior form and interior layout of M TOGETHER exude luxury, comfort, and functionality all intertwined to cater to the discerning tastes of yacht owners. Built with the distinctive Ferretti craftsmanship, this motor yacht showcases the epitome of innovative design, engineering marvel, exquisite styling, and intricate attention to detail. At 41.8 meters in length, M TOGETHER is a classic example of a voluminous and spacious motor yacht. It offers plenty of living spaces spread over its sleek and streamlined structure, giving owners and guests the ultimate luxurious maritime experience. Whether you're hosting a sophisticated yacht party or seeking a tranquil seaside retreat, this vessel offers ample space for any event or occasion. M TOGETHER is not just a display of grandeur, but it is also a testament to design. The large external areas are ideal for spending time enjoying unobstructed ocean views or dining under the stars, while interiors boast a variety of multi-functional areas for relaxation, entertainment, and socialising. Intelligently designed, this motor yacht balances private and social spaces brilliantly, making it well-suited to hosting large gatherings without compromising the levels of comfort and privacy. The naval architecture and exterior design of this Ferretti Custom Line masterpiece ensure smooth cruising even in choppy waters – a feature that makes it ideal for long-distance voyaging. The NAVETTA 42 series, to which M TOGETHER belongs, is designed to offer maximum comfort when at sea. Its design supports outstanding seaworthiness, improved comfort during navigation, and efficient fuel consumption. The building technique of this yacht reflects the Ferretti's commitment to sustainability with materials and processes having minimal environmental impact. It features advanced propulsion systems that significantly reduce noise and vibration levels. The use of top-notch sustainable materials not only offers durability but also gives the vessel a seamless and timeless aesthetic appeal. M TOGETHER is not just about external beauty and inner comfort; it's also about performance. As a motor yacht, its propulsion system is innovative and fuel-efficient with top speeds that redefine maritime luxury cruising. It is equipped with technologically advanced navigation and communication systems that ensure secure voyaging in various sea conditions. The interiors of the M TOGETHER are nothing short of opulent. Designed with sophistication in mind, they carry the aura of a luxury villa floating on water. The timeless style of this NAVETTA 42 model blends with modern features to provide a unique marine living experience. With comfortable and spacious cabins, extravagant saloons, modern kitchens, and state-of-the-art entertainment systems, the vessel offers a sense of homeliness while being surrounded by the vastness of sea. Onboard M TOGETHER, you can expect to find an assortment of water toys and leisure facilities, adding an extra layer of enjoyment to your sea adventure. Its wide swim platform provides easy access to the sea, inviting guests to plunge into the crystal clear waters and

engage in various water sports activities. In conclusion, M TOGETHER is not merely a vessel; it's an experience, an exquisite manifestation of the nutshell of luxury sailing. Crafted by the world-class Ferretti Custom Line, this 41.8-meter motor yacht offers an unparalleled level of luxury and comfort, promising unforgettable sea journeys. Despite its size, it strikes the right balance between style, functionality, performance, and sustainability. The M TOGETHER is indeed a class apart in the world of luxury motor yachts.

### Basic Information

Category: Semi-Displacement	Sub Category: Semi-Displacement
Model Year: 2023	Year Built: 2023
Country: Italy	

### Dimensions

LOA: 137' 2" (41.8mm)	Beam: 26.57
Max Draft: 7' 8" (2.33mm)	

### Speed, Capacities and Weight

Cruise Speed: 13 Knots Kts. (15 MPH)	Max Speed: 16 Knots Kts. (18 MPH)
Gross Tonnage: 348 Pounds	Water Capacity: 4000 Gallons
Fuel Capacity: 9774.37 Gal Gallons	

### Accommodations

Total Cabins: 5	Total Heads: 2
Crew Berths: 8	Crew Heads: 5

## Hull and Deck Information

---

**Hull Material:** GRP

**Hull Configuration:** Displacement w/  
Bulbous Bow

**Hull Color:** White

## Engine Information

---

**Engines:** 2

**Manufacturer:** CAT

**Engine Type:** Inboard

**Fuel Type:** Diesel



# PHOTOS

**Navetta 42 Running shot**



**Navetta 42 running shot**



**Navetta 42 running shot**



**Main Cockpit Navetta 42 M Together**



**Main Cockpit**



**Upper Deck external area**





**Sun Deck**



**Sun Deck 2**



**Sun Deck 3 Navetta 42 M Together**



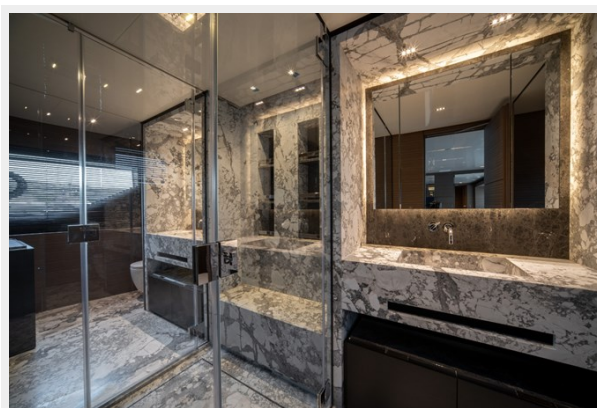
**Sun Deck 4 Navetta 42 M Together**



**Sun Deck pool Navetta 42 M Together**



**Master cabin bathroom**





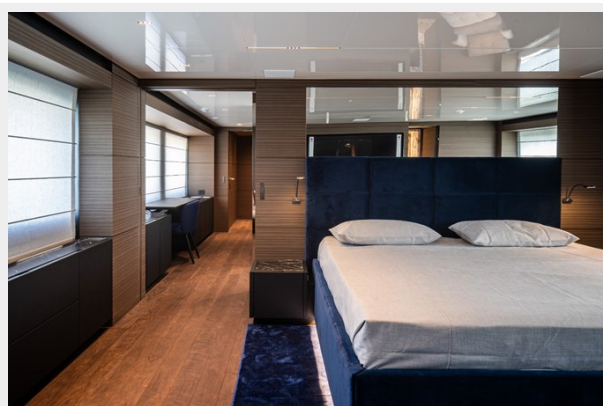
**Master Cabin 1**



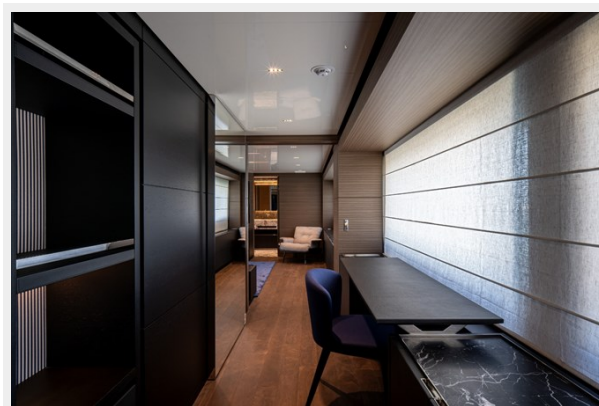
**Master cabin 2**



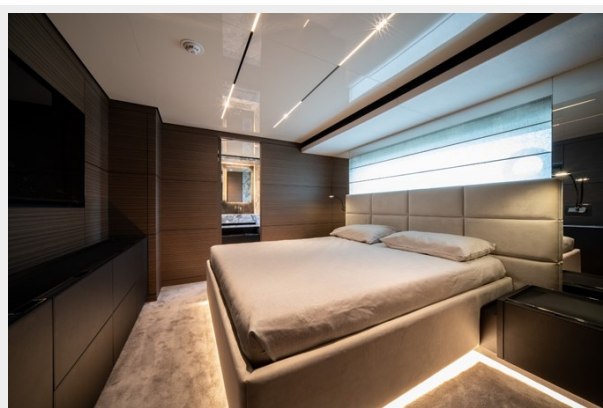
**Master Cabin 3**



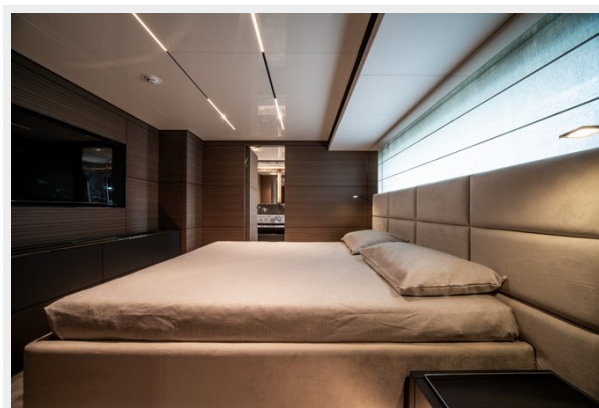
**Master cabin office**



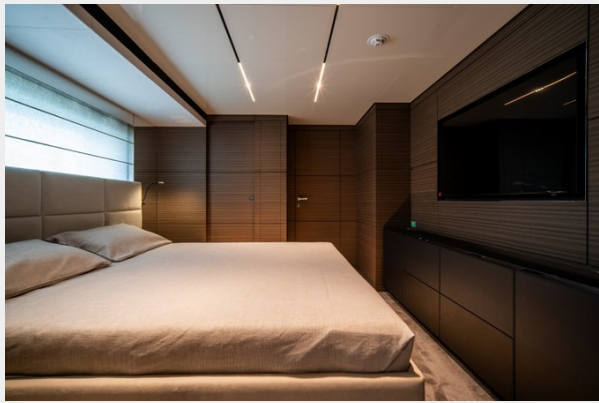
**VIP cabin**



**VIP Cabin Navetta 42 M Together**



**VIP Cabin**



**VIP cabin Bathroom**



**Main Salon**



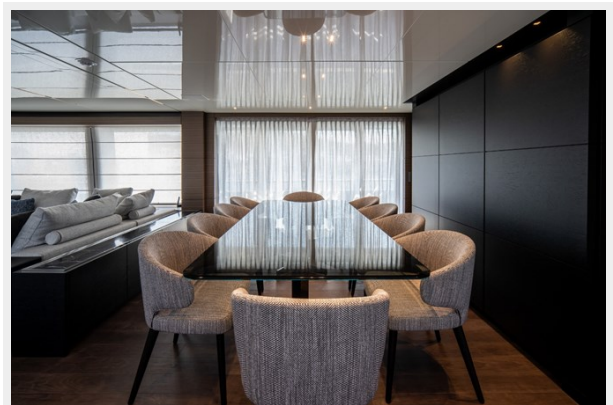
**Main Salon**



**Main salon**

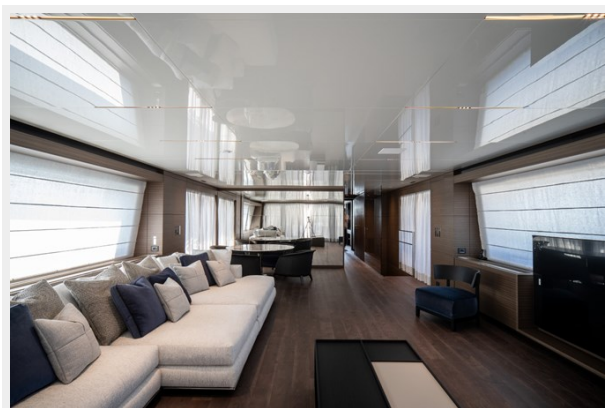


**Main Salon**





Upper Salon



Upper Salon



Upper Salon



Upper Salon



Main Galley



Main Galley



# CONTACTS

---

Andrey Shestakov, leading yacht broker of the sales department of Shestakov Yacht Sales Inc. Shestakov Yacht Sales Inc., the official representative of the Miami/Fort Lauderdale FL headquarters.

## Contact details

---

Email: **andrey@shestakovyachtsales.com**

Web: [shestakovyachtsales.com/en/](http://shestakovyachtsales.com/en/)

## Telephones

---

USA: **+1(954)274-4435**

## Office hours

---

Monday – Saturday: **9:00 - 21:00 EDT**

Sunday: **closed**

## Address

---



Harbour Towne Marina, 850 NE 3rd St,  
STE 213, Dania, FL 33004