

ANDIAMO — MATTHEWS



Builder: MATTHEWS

Year Built: 1962

Model: Classic

Price: \$165,000 USD

Location: United States

LOA: 42' 4" (12.9mm)

Beam: 13

Min Draft: 3' 4" (1.02mm)

Max Draft: 3' 7" (1.09mm)

Cruise Speed: 8 Knots Kts. (9 MPH)

Our experienced yacht broker, Andrey Shestakov, will help you choose and buy a yacht that best suits your needs **Andiamo — MATTHEWS** from our catalogue. Presently, at Shestakov Yacht Sales Inc., we have a wide variety of yachts available on our sale's list. We also work in close contact with all the big yacht manufacturers from all over the world.

If you would like to buy a yacht **Andiamo — MATTHEWS** or would like help answering any questions concerning purchasing, selling or chartering a yacht, please call **+1(954)274-4435**

TABLE OF CONTENTS

TABLE OF CONTENTS	2
SPECIFICATIONS	5
Overview	5
Basic Information	5
Dimensions	6
Speed, Capacities and Weight	6
Accommodations	6
Hull and Deck Information	6
Engine Information	6
PHOTOS	7
2_1962 42ft Matthews 42 Double Cabin ANDIAMO	7
3_1962 42ft Matthews 42 Double Cabin ANDIAMO	7
4_1962 42ft Matthews 42 Double Cabin ANDIAMO	7
5_1962 42ft Matthews 42 Double Cabin ANDIAMO	7
6_1962 42ft Matthews 42 Double Cabin ANDIAMO	8
7_1962 42ft Matthews 42 Double Cabin ANDIAMO	8
8_1962 42ft Matthews 42 Double Cabin ANDIAMO	8
9_1962 42ft Matthews 42 Double Cabin ANDIAMO	8
10_1962 42ft Matthews 42 Double Cabin ANDIAMO	9
11_1962 42ft Matthews 42 Double Cabin ANDIAMO	9
12_1962 42ft Matthews 42 Double Cabin ANDIAMO	9
13_1962 42ft Matthews 42 Double Cabin ANDIAMO	9
14_1962 42ft Matthews 42 Double Cabin ANDIAMO	10
15_1962 42ft Matthews 42 Double Cabin ANDIAMO	10
16_1962 42ft Matthews 42 Double Cabin ANDIAMO	10
17_1962 42ft Matthews 42 Double Cabin ANDIAMO	10
18_1962 42ft Matthews 42 Double Cabin ANDIAMO	11
19_1962 42ft Matthews 42 Double Cabin ANDIAMO	11

20_1962 42ft Matthews 42 Double Cabin ANDIAMO	11
21_1962 42ft Matthews 42 Double Cabin ANDIAMO	11
22_1962 42ft Matthews 42 Double Cabin ANDIAMO	12
23_1962 42ft Matthews 42 Double Cabin ANDIAMO	12
24_1962 42ft Matthews 42 Double Cabin ANDIAMO	12
25_1962 42ft Matthews 42 Double Cabin ANDIAMO	12
27_1962 42ft Matthews 42 Double Cabin ANDIAMO	13
26_1962 42ft Matthews 42 Double Cabin ANDIAMO	13
28_1962 42ft Matthews 42 Double Cabin ANDIAMO	13
29_1962 42ft Matthews 42 Double Cabin ANDIAMO	13
30_1962 42ft Matthews 42 Double Cabin ANDIAMO	14
31_1962 42ft Matthews 42 Double Cabin ANDIAMO	14
32_1962 42ft Matthews 42 Double Cabin ANDIAMO	14
33_1962 42ft Matthews 42 Double Cabin ANDIAMO	14
34_1962 42ft Matthews 42 Double Cabin ANDIAMO	15
35_1962 42ft Matthews 42 Double Cabin ANDIAMO	15
37_1962 42ft Matthews 42 Double Cabin ANDIAMO	15
36_1962 42ft Matthews 42 Double Cabin ANDIAMO	15
39_1962 42ft Matthews 42 Double Cabin ANDIAMO	16
38_1962 42ft Matthews 42 Double Cabin ANDIAMO	16
40_1962 42ft Matthews 42 Double Cabin ANDIAMO	16
41_1962 42ft Matthews 42 Double Cabin ANDIAMO	16
43_1962 42ft Matthews 42 Double Cabin ANDIAMO	17
42_1962 42ft Matthews 42 Double Cabin ANDIAMO	17
45_1962 42ft Matthews 42 Double Cabin ANDIAMO	17
44_1962 42ft Matthews 42 Double Cabin ANDIAMO	17
46_1962 42ft Matthews 42 Double Cabin ANDIAMO	18
47_1962 42ft Matthews 42 Double Cabin ANDIAMO	18
48_1962 42ft Matthews 42 Double Cabin ANDIAMO	18

49_1962 42ft Matthews 42 Double Cabin ANDIAMO	18
51_1962 42ft Matthews 42 Double Cabin ANDIAMO	19
50_1962 42ft Matthews 42 Double Cabin ANDIAMO	19
52_1962 42ft Matthews 42 Double Cabin ANDIAMO	19
53_1962 42ft Matthews 42 Double Cabin ANDIAMO	19
55_1962 42ft Matthews 42 Double Cabin ANDIAMO	20
54_1962 42ft Matthews 42 Double Cabin ANDIAMO	20
57_1962 42ft Matthews 42 Double Cabin ANDIAMO	20
56_1962 42ft Matthews 42 Double Cabin ANDIAMO	20
58_1962 42ft Matthews 42 Double Cabin ANDIAMO	21
59_1962 42ft Matthews 42 Double Cabin ANDIAMO	21
60_1962 42ft Matthews 42 Double Cabin ANDIAMO	21
61_1962 42ft Matthews 42 Double Cabin ANDIAMO	21
62_1962 42ft Matthews 42 Double Cabin ANDIAMO	22
63_1962 42ft Matthews 42 Double Cabin ANDIAMO	22
64_1962 42ft Matthews 42 Double Cabin ANDIAMO	22
65_1962 42ft Matthews 42 Double Cabin ANDIAMO	22
66_1962 42ft Matthews 42 Double Cabin ANDIAMO	23
CONTACTS	24
Contact details	24
Telephones	24
Office hours	24
Address	24

SPECIFICATIONS

Overview

On **AUGUST 19, 1961** Mr. Alden Sypher of Washinton DC was signing a contract for a wonderful new **MATTHEWS 42' DOUBLE CABIN MOTORYACHT**. His new custom built yacht (**24033**) was ordered with the largertest engines possible at the time, the **GM 6V53** engines that were pushing **185 hp**. Planning, designing, customizing and updating over the next 9 months resulted in a magnificent custom mahogany motor yacht named **ANDIAMO**. Mr. Sypher paid **\$623,791** in todays money for his extraordinary new yacht. **ANDIAMO** graced the waters of the Chesapeake and the Eastern seaboard with the Sypher family for 3 years before being sold to her next fastidious owner in 1965. Her current owner who is even more fastidious than the first one is owner number **7**. **ANDIAMO** has always proudly carried her original name from launch day until today. The current **custodian** has cherished and lavished love and money on her since 1999. During their custodianship, the sellers have maintained her in impeccable condition and to ensure her longevity she has been professionally fiberglassed and a custom aft deck top was added. She has proudly taken awards at a variety of classic boat shows and will continue to be show worthy for the next custodian. **ANDIAMO WILL BE ON DISPLAY AT THE BILLY CREEL MEMORIAL GULF COAST WOODEN & CLASSIC BOAT SHOW MAY17 AND 18TH. COME SEE THIS EXQUISTE EXAMPLE OF AMERICAN MARITIME HISTORY.**

IT HAS BEEN REQUESTED THAT SHE CONTINUE HER REIGN AS QUEEN OF THE FLEET WIH HER ORIGINAL LAUNCH NAME OF ANDIAMO.

Basic Information

Category: Classic

Sub Category: Classic

Model Year: 1962

Year Built: 1962

Country: United States

Dimensions

LOA: 42' 4" (12.9mm)

LWL: 41' (12.5mm)

Beam: 13

Min Draft: 3' 4" (1.02mm)

Max Draft: 3' 7" (1.09mm)

Speed, Capacities and Weight

Cruise Speed: 8 Knots Kts. (9 MPH)

Water Capacity: 35 Gallons

Fuel Capacity: 250 Gal Gallons

Accommodations

Total Cabins: 2

Total Heads: 2

Hull and Deck Information

Hull Material: Fiberglass

Engine Information

Engines: 1

Manufacturer: Detroit Diesel

Engine Type: Inboard

Fuel Type: Diesel

PHOTOS

**2_1962 42ft Matthews 42 Double Cabin
ANDIAMO**



**3_1962 42ft Matthews 42 Double Cabin
ANDIAMO**



**4_1962 42ft Matthews 42 Double Cabin
ANDIAMO**



**5_1962 42ft Matthews 42 Double Cabin
ANDIAMO**



**6_1962 42ft Matthews 42 Double Cabin
ANDIAMO**



**7_1962 42ft Matthews 42 Double Cabin
ANDIAMO**



**8_1962 42ft Matthews 42 Double Cabin
ANDIAMO**



**9_1962 42ft Matthews 42 Double Cabin
ANDIAMO**



10_1962 42ft Matthews 42 Double Cabin
ANDIAMO



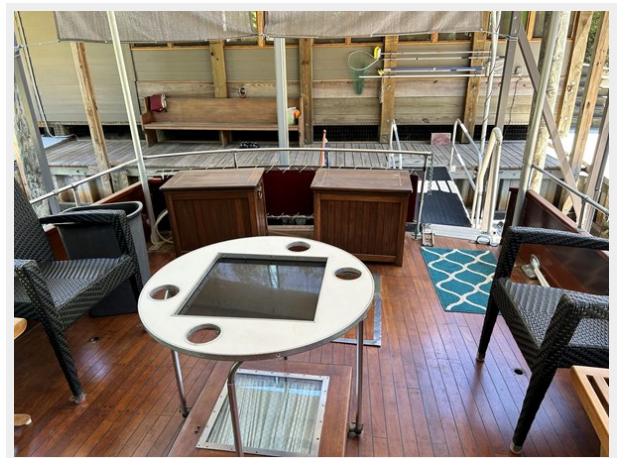
11_1962 42ft Matthews 42 Double Cabin
ANDIAMO



12_1962 42ft Matthews 42 Double Cabin
ANDIAMO



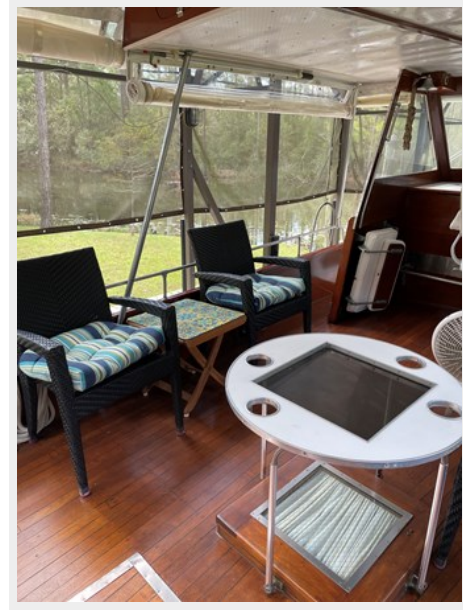
13_1962 42ft Matthews 42 Double Cabin
ANDIAMO



**14_1962 42ft Matthews 42 Double Cabin
ANDIAMO**



**15_1962 42ft Matthews 42 Double Cabin
ANDIAMO**



**16_1962 42ft Matthews 42 Double Cabin
ANDIAMO**



**17_1962 42ft Matthews 42 Double Cabin
ANDIAMO**



**18_1962 42ft Matthews 42 Double Cabin
ANDIAMO**



**19_1962 42ft Matthews 42 Double Cabin
ANDIAMO**



**20_1962 42ft Matthews 42 Double Cabin
ANDIAMO**



**21_1962 42ft Matthews 42 Double Cabin
ANDIAMO**



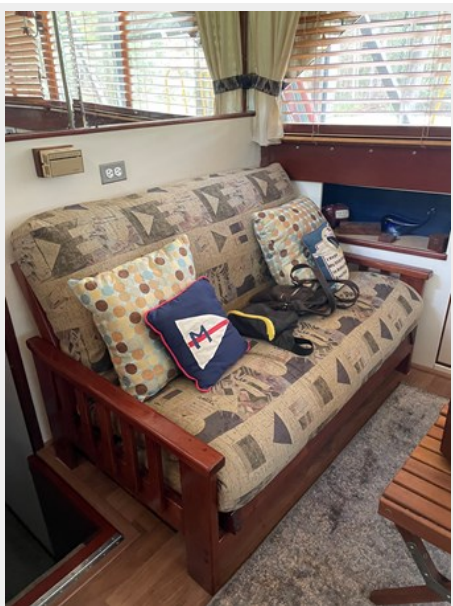
**22_1962 42ft Matthews 42 Double Cabin
ANDIAMO**



**23_1962 42ft Matthews 42 Double Cabin
ANDIAMO**



**24_1962 42ft Matthews 42 Double Cabin
ANDIAMO**



**25_1962 42ft Matthews 42 Double Cabin
ANDIAMO**



**26_1962 42ft Matthews 42 Double Cabin
ANDIAMO**



**27_1962 42ft Matthews 42 Double Cabin
ANDIAMO**



**28_1962 42ft Matthews 42 Double Cabin
ANDIAMO**



**29_1962 42ft Matthews 42 Double Cabin
ANDIAMO**



**30_1962 42ft Matthews 42 Double Cabin
ANDIAMO**



**31_1962 42ft Matthews 42 Double Cabin
ANDIAMO**



**32_1962 42ft Matthews 42 Double Cabin
ANDIAMO**



**33_1962 42ft Matthews 42 Double Cabin
ANDIAMO**



**34_1962 42ft Matthews 42 Double Cabin
ANDIAMO**



**35_1962 42ft Matthews 42 Double Cabin
ANDIAMO**



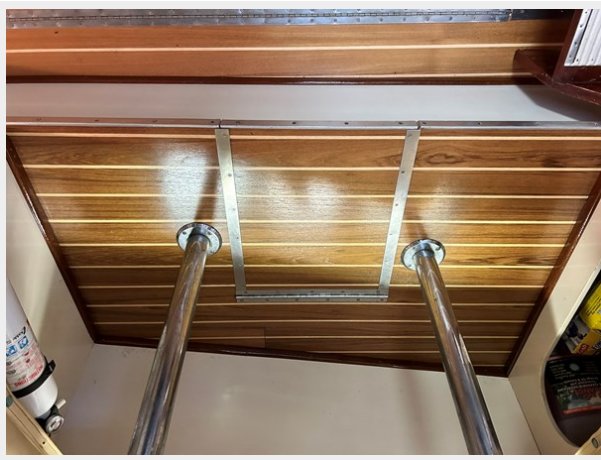
**36_1962 42ft Matthews 42 Double Cabin
ANDIAMO**



**37_1962 42ft Matthews 42 Double Cabin
ANDIAMO**



**38_1962 42ft Matthews 42 Double Cabin
ANDIAMO**



**39_1962 42ft Matthews 42 Double Cabin
ANDIAMO**



**40_1962 42ft Matthews 42 Double Cabin
ANDIAMO**



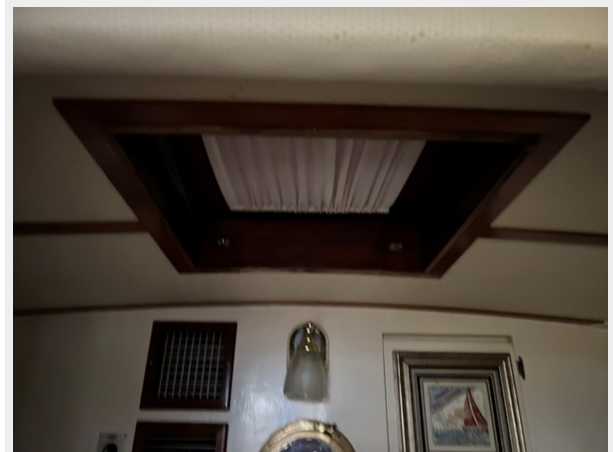
**41_1962 42ft Matthews 42 Double Cabin
ANDIAMO**



**42_1962 42ft Matthews 42 Double Cabin
ANDIAMO**



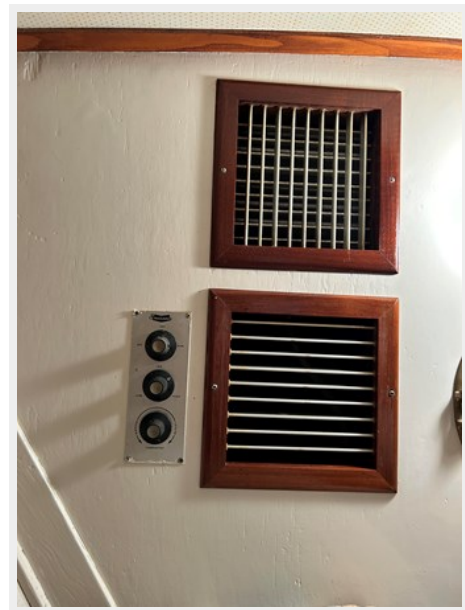
**43_1962 42ft Matthews 42 Double Cabin
ANDIAMO**



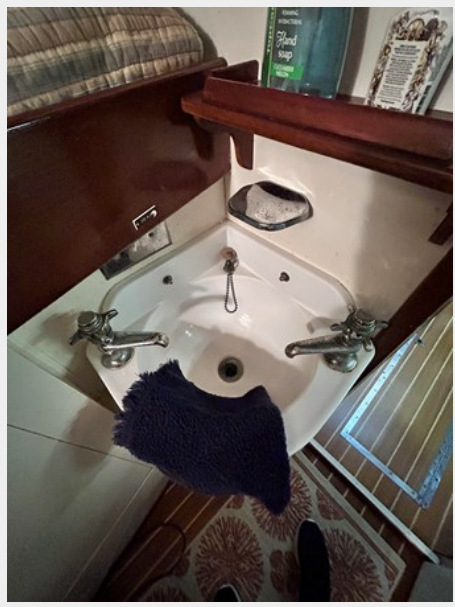
**44_1962 42ft Matthews 42 Double Cabin
ANDIAMO**



**45_1962 42ft Matthews 42 Double Cabin
ANDIAMO**



**46_1962 42ft Matthews 42 Double Cabin
ANDIAMO**



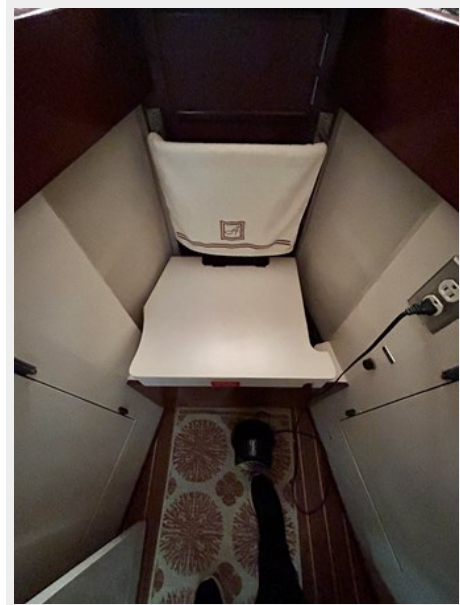
**47_1962 42ft Matthews 42 Double Cabin
ANDIAMO**



**48_1962 42ft Matthews 42 Double Cabin
ANDIAMO**



**49_1962 42ft Matthews 42 Double Cabin
ANDIAMO**



**50_1962 42ft Matthews 42 Double Cabin
ANDIAMO**



**51_1962 42ft Matthews 42 Double Cabin
ANDIAMO**



**52_1962 42ft Matthews 42 Double Cabin
ANDIAMO**



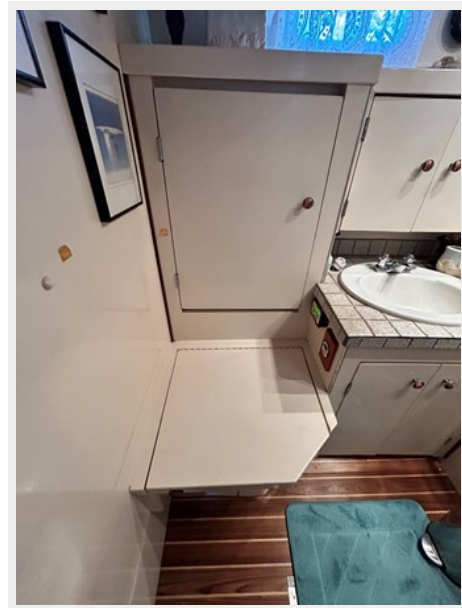
**53_1962 42ft Matthews 42 Double Cabin
ANDIAMO**



**54_1962 42ft Matthews 42 Double Cabin
ANDIAMO**



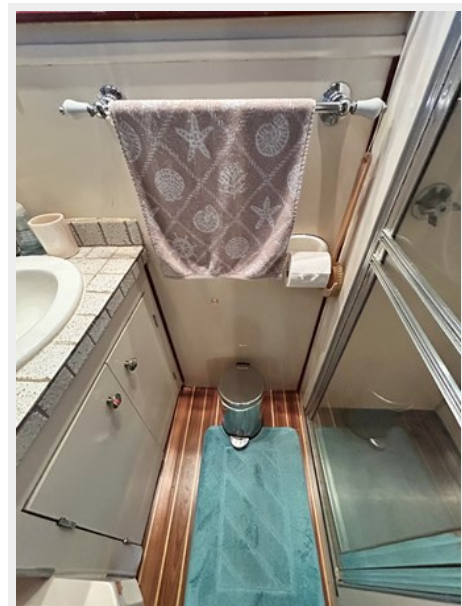
**55_1962 42ft Matthews 42 Double Cabin
ANDIAMO**



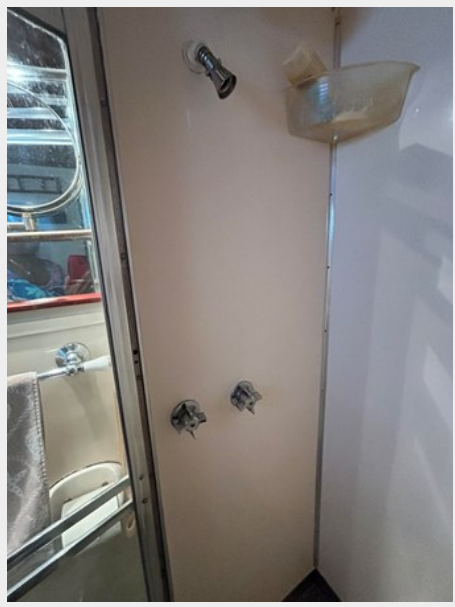
**56_1962 42ft Matthews 42 Double Cabin
ANDIAMO**



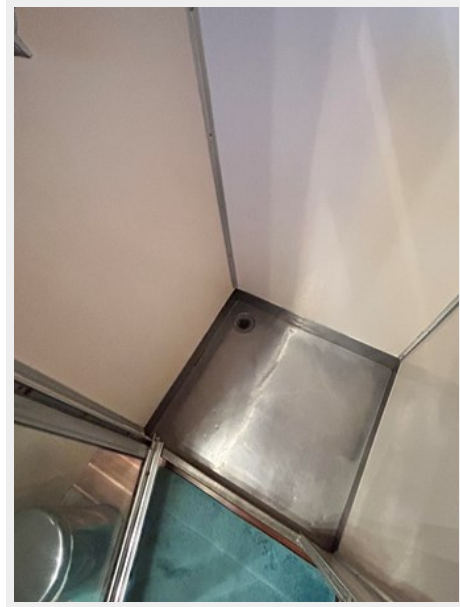
**57_1962 42ft Matthews 42 Double Cabin
ANDIAMO**



**58_1962 42ft Matthews 42 Double Cabin
ANDIAMO**



**59_1962 42ft Matthews 42 Double Cabin
ANDIAMO**



**60_1962 42ft Matthews 42 Double Cabin
ANDIAMO**



**61_1962 42ft Matthews 42 Double Cabin
ANDIAMO**



**62_1962 42ft Matthews 42 Double Cabin
ANDIAMO**



**63_1962 42ft Matthews 42 Double Cabin
ANDIAMO**



**64_1962 42ft Matthews 42 Double Cabin
ANDIAMO**



**65_1962 42ft Matthews 42 Double Cabin
ANDIAMO**



66_1962 42ft Matthews 42 Double Cabin ANDIAMO



CONTACTS

Andrey Shestakov, leading yacht broker of the sales department of Shestakov Yacht Sales Inc. Shestakov Yacht Sales Inc., the official representative of the Miami/Fort Lauderdale FL headquarters.

Contact details

Email: andrey@shestakovyachtsales.com

Web: shestakovyachtsales.com/en/

Telephones

USA: +1(954)274-4435

Office hours

Monday – Saturday: **9:00 - 21:00** EDT

Sunday: **closed**

Address



Harbour Towne Marina, 850 NE 3rd St,
STE 213, Dania, FL 33004