

## 1985 CATALINA 36 — CATALINA



**Builder:** CATALINA

**Year Built:** 1985

**Model:** Boats

**Price:** \$26,000 USD

**Location:** United States

**LOA:** 36' (10.97mm)

**Beam:** 11.75

**Max Draft:** 4' 4" (1.32mm)

**Cruise Speed:** 7.3 Knots Kts. (8 MPH)

Our experienced yacht broker, Andrey Shestakov, will help you choose and buy a yacht that best suits your needs 1985 Catalina 36 — CATALINA from our catalogue. Presently, at Shestakov Yacht Sales Inc., we have a wide variety of yachts available on our sale's list. We also work in close contact with all the big yacht manufacturers from all over the world.

If you would like to buy a yacht 1985 Catalina 36 — CATALINA or would like help answering any questions concerning purchasing, selling or chartering a yacht, please call +1(954)274-4435

---

# TABLE OF CONTENTS

---

TABLE OF CONTENTS	2
SPECIFICATIONS	3
Overview	3
Basic Information	3
Dimensions	3
Speed, Capacities and Weight	3
Accommodations	3
Hull and Deck Information	3
Engine Information	4
PHOTOS	5
CONTACTS	12
Contact details	12
Telephones	12
Office hours	12
Address	12

---

# SPECIFICATIONS

---

## Overview

---

1985 Catalina 36 This model was designed by Frank Butler and introduced in 1982. A total of 1766 examples were produced. The boat has a draft of 5.30 ft with the standard fin keel. The boat is fitted with an inboard Universal diesel engine. The fuel tank holds 25 gallons and the fresh water tank has a capacity of 75 gallons. 4 batteries, built in charger, GPS, autopilot, dodger, and dinghy with outboard motor. Located at Chula Vista Marina with a transferable slip.

## Basic Information

---

**Category:** Boats

**Model Year:** 1985

**Year Built:** 1985

**Country:** United States

## Dimensions

---

**LOA:** 36' (10.97mm)

**Beam:** 11.75

**Max Draft:** 4' 4" (1.32mm)

## Speed, Capacities and Weight

---

**Cruise Speed:** 7.3 Knots Kts. (8 MPH)

**Water Capacity:** 72 Gallons

**Fuel Capacity:** 25 Gal Gallons

## Accommodations

---

**Total Heads:** 1

## Hull and Deck Information

---

**Exterior Designer:** Frank Butler

**Interior Designer:** Frank Butler

---

## Engine Information

---

**Engines:** 1

**Manufacturer:** Universal

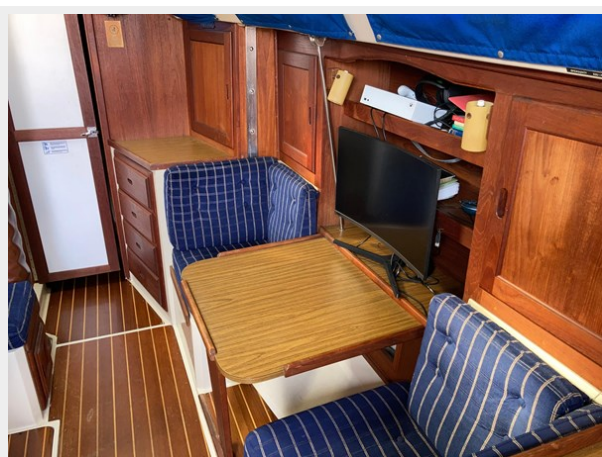
**Engine Type:** Inboard

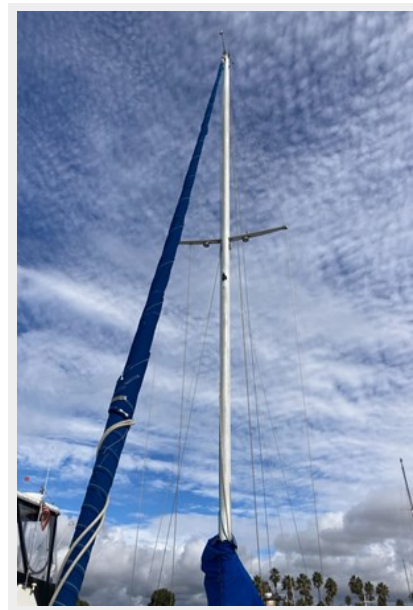
**Fuel Type:** Diesel

# PHOTOS





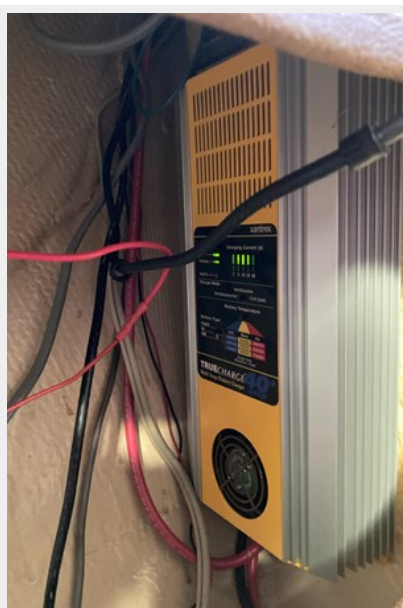
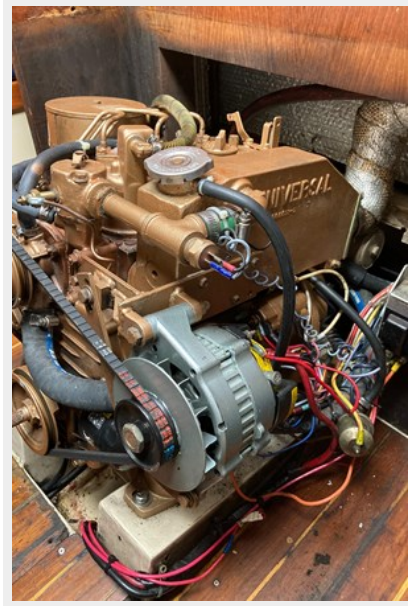












# CONTACTS

---

Andrey Shestakov, leading yacht broker of the sales department of Shestakov Yacht Sales Inc. Shestakov Yacht Sales Inc., the official representative of the Miami/Fort Lauderdale FL headquarters.

## Contact details

---

Email: [andrey@shestakovyachtsales.com](mailto:andrey@shestakovyachtsales.com)

Web: [shestakovyachtsales.com/en/](http://shestakovyachtsales.com/en/)

## Telephones

---

USA: +1(954)274-4435

## Office hours

---

Monday – Saturday: **9:00 - 21:00** EDT

Sunday: **closed**

## Address

---



Harbour Towne Marina, 850 NE 3rd St,  
STE 213, Dania, FL 33004