

# 1988 SEA RAY 268 SUNDANCER — SEA RAY



**Builder:** SEA RAY

**Year Built:** 1988

**Model:** cruiser

**Price:** \$19,500 USD

**Location:** United States

**LOA:** 27' (8.23mm)

**Beam:** 8.41

**Max Draft:** 2' 8" (0.81mm)

Our experienced yacht broker, Andrey Shestakov, will help you choose and buy a yacht that best suits your needs 1988 Sea Ray 268 Sundancer — SEA RAY from our catalogue. Presently, at Shestakov Yacht Sales Inc., we have a wide variety of yachts available on our sale's list. We also work in close contact with all the big yacht manufacturers from all over the world.

If you would like to buy a yacht 1988 Sea Ray 268 Sundancer — SEA RAY or would like help answering any questions concerning purchasing, selling or chartering a yacht, please call +1(954)274-4435

---

# TABLE OF CONTENTS

---

TABLE OF CONTENTS	2
SPECIFICATIONS	3
Overview	3
Basic Information	3
Dimensions	3
Speed, Capacities and Weight	3
Accommodations	4
Engine Information	4
PHOTOS	5
CONTACTS	13
Contact details	13
Telephones	13
Office hours	13
Address	13

---

# SPECIFICATIONS

---

## Overview

---

1988 Sea Ray 268 Sundancer This is the nicest Sea Ray 268 Sundancer in the country. You will be blown away by the condition of this boat. Owners are upgrading to a larger vessel. True pride in ownership for this stunning Sea Ray. Upgrades include: New Cabin Upholstery New Simrad GPS Unit New Stereo Head Unit with Bluetooth Head Replaced New Dinette Table LED Lighting She's powered by a 7.4L Mercruiser with 330HP, believed to be remanufactured about 5 years ago. Fuel capacity is 100 gallons and water is 24 gallons. Stored under cover and it is evident by the way the gelcoat shines, the full canvas enclosure looks and the condition of the cockpit seating. The functional layout down below features a dinette to port and a galley to starboard. Forward is a large V-Berth and to aft is a spacious double berth. The galley features microwave and fridge as well as a sink. A wet head is also located onboard with sink, cassette toilet, and counter space. She is turn key awaiting a new family that will love and enjoy her as much as the current owners do.

## Basic Information

---

**Category:** cruiser

**Sub Category:** Express

**Model Year:** 1988

**Year Built:** 1988

**Country:** United States

## Dimensions

---

**LOA:** 27' (8.23mm)

**Beam:** 8.41

**Max Draft:** 2' 8" (0.81mm)

## Speed, Capacities and Weight

---

**Water Capacity:** 24 Gallons

**Fuel Capacity:** 100 Gal Gallons

---

## Accommodations

---

**Total Heads:** 1

---

## Engine Information

---

**Engines:** 1

**Manufacturer:** Mercruiser

**Engine Type:** I/O

**Fuel Type:** Gas

# PHOTOS





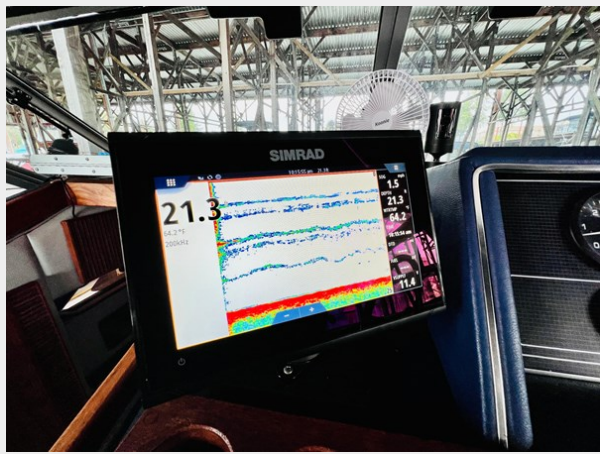














# CONTACTS

---

Andrey Shestakov, leading yacht broker of the sales department of Shestakov Yacht Sales Inc. Shestakov Yacht Sales Inc., the official representative of the Miami/Fort Lauderdale FL headquarters.

## Contact details

---

Email: [andrey@shestakovyachtsales.com](mailto:andrey@shestakovyachtsales.com)

Web: [shestakovyachtsales.com/en/](http://shestakovyachtsales.com/en/)

## Telephones

---

USA: +1(954)274-4435

## Office hours

---

Monday – Saturday: **9:00 - 21:00** EDT

Sunday: **closed**

## Address

---



Harbour Towne Marina, 850 NE 3rd St,  
STE 213, Dania, FL 33004