

1990 TARTAN 412 — TARTAN YACHTS



Builder: TARTAN YACHTS

Year Built: 1990

Model: Boats

Price: \$99,500 USD

Location: United States

LOA: 41' 3" (12.55mm)

Beam: 12.58

Max Draft: 5' (1.52mm)

Our experienced yacht broker, Andrey Shestakov, will help you choose and buy a yacht that best suits your needs 1990 Tartan 412 — TARTAN YACHTS from our catalogue. Presently, at Shestakov Yacht Sales Inc., we have a wide variety of yachts available on our sale's list. We also work in close contact with all the big yacht manufacturers from all over the world.

If you would like to buy a yacht 1990 Tartan 412 — TARTAN YACHTS or would like help answering any questions concerning purchasing, selling or chartering a yacht, please call +1(954)274-4435

TABLE OF CONTENTS

TABLE OF CONTENTS	2
SPECIFICATIONS	3
Overview	3
Basic Information	3
Dimensions	4
Speed, Capacities and Weight	4
Accommodations	4
Engine Information	4
PHOTOS	5
CONTACTS	17
Contact details	17
Telephones	17
Office hours	17
Address	17

SPECIFICATIONS

Overview

1990 Tartan 412 IMPRESSIVE IS THE BEST WAY TO DESCRIBE THIS 1990 TARTAN 412! SHE IS UPGRADED, CLEAN, AND READY TO CRUISE! MAKE A DATE TO SEE YOUR NEXT FAST CRUISING BOAT! ONLY THREE OWNERS, YOU WILL BE THE FOURTH! ALWAYS A FRESHWATER BOAT. SHE STARTED HER LIFE IN THE GREAT LAKES, THEN CAME TO THE COLUMBIA RIVER. Owner says make an offer. He's a two boat owner!! Design notes by Tim Jackett The Tartan 412 features a long waterline medium displacement hull form with fullness in the ends. Coupled with firm U-shaped sections the 412 will offer performance easily realized by the short handed cruiser and appreciated by the racing sailor. The even distribution of hull volume produces a shape which stays uniform and balanced as the boat heels. Two keels are offered, a deep fin (7'6", 7600 lbs.) and a shoal draft Scheel (TM) keel (5'1", 7600 lbs.). The ballast is carried low giving the 412 the ability to comfortably utilize her powerful sailplan. A balanced spade rudder, on a properly sized 304 stainless steel shaft, offers both low resistance and maximum control. The tall masthead, double spreader, tapered rig features a large mainsail and high aspect ratio fore triangle for easy sail handling. The rig offers balanced sail sizes with a large main for good performance offwind and efficient headsail proportions for tight upwind tacking angles. Mainsail sheeting is on a housetop traveler and the headsail is sheeted to adjustable inboard genoa tracks for upwind work and a rail mounted track for reaching and running. The Tartan 412 deck design anticipates frequent short-handed sailing and is engineered for safety and comfort with styling an important consideration. All sail controls are led to housetop winches and rope clutches, including single line reefing allowing the main to be shortened from the cockpit. Double rails, lifelines and a tall teak rail offer crew security on her wide side decks and large foredeck. The cockpit is angled and contoured to offer comfortable seating both at the dock and sailing. The helm position offers a raised hump seat for excellent forward visibility. Two lazarette hatches and a seat hatch provide ample access to cockpit storage. Forward and aft staterooms, each served by a private head, highlight the accommodation plan. The forward cabin berth is 6'1" 8" long and 6'9" wide with abundant storage in drawers, lockers and shelves. Ventilation forward is provided by two dorades, two 7"x10" vent hatches and the 24"x24" foredeck hatch. The aft cabin adjoins a full head with separate stall shower and boasts a 6'7"x6'0" berth, ample storage and excellent ventilation. All bunk cushions are 6" firm foam. In the main cabin, a drop leaf, adjustable table with satin varnish is flanked by a U-shaped settee to port and two over-stuffed chairs to starboard. Lockers outboard with large storage areas, liquor locker and an entertainment cabinet complete the main cabin.

Basic Information

Category: Boats

Model Year: 1990

Year Built: 1990

Country: United States

Dimensions

LOA: 41' 3" (12.55mm)

LWL: 31' 6" (9.58mm)

Beam: 12.58

Max Draft: 5' (1.52mm)

Speed, Capacities and Weight

Water Capacity: 120 Gallons

Holding Tank: 16 Gal Gallons

Fuel Capacity: 50 Gal Gallons

Accommodations

Total Cabins: 2

Total Heads: 2

Engine Information

Engines: 1

Manufacturer: Universal

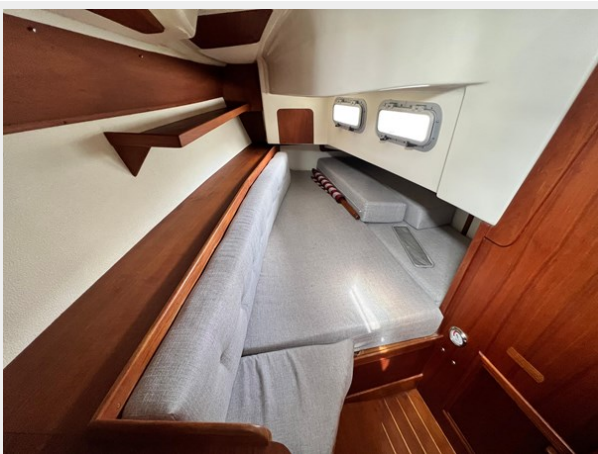
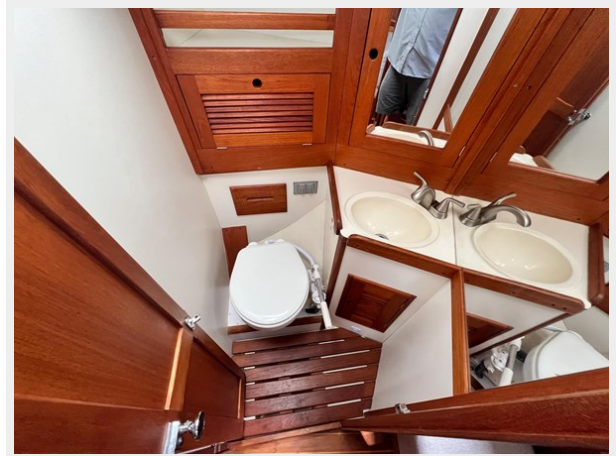
Engine Type: Inboard

Fuel Type: Diesel

PHOTOS











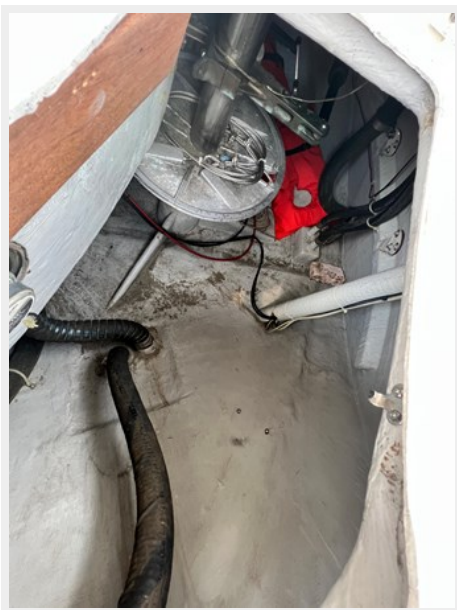


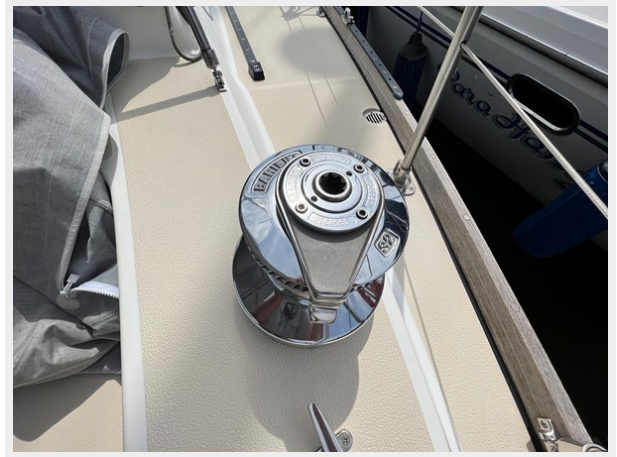












CONTACTS

Andrey Shestakov, leading yacht broker of the sales department of Shestakov Yacht Sales Inc. Shestakov Yacht Sales Inc., the official representative of the Miami/Fort Lauderdale FL headquarters.

Contact details

Email: andrey@shestakovyachtsales.com

Web: shestakovyachtsales.com/en/

Telephones

USA: +1(954)274-4435

Office hours

Monday – Saturday: **9:00 - 21:00** EDT

Sunday: **closed**

Address



Harbour Towne Marina, 850 NE 3rd St,
STE 213, Dania, FL 33004