

2018 PURSUIT 355 OS — PURSUIT



Судостроитель: PURSUIT

Год постройки: 2018

Модель: Катер для спортивной рыбалки

Цена: \$385,000 USD

Местонахождение: United States

Длина общая: 35' (10.67mm)

Ширина: 12

Макс. осадка: 3' (0.91mm)

Крейс. скорость: 27.81 Knots Kts. (32 MPH)

Макс. скорость: 37.37 Knots Kts. (43 MPH)

Купить 2018 Pursuit 355 OS — PURSUIT а также выбрать подходящую вам яхту из нашего каталога яхт вам поможет опытный яхтенный брокер Андрей Шестаков. На сегодняшний день компания Shestakov Yacht Sales Inc. имеет большое количество яхт в собственном списке продаж, а также тесно сотрудничает со всеми крупными яхтенными производителями по всему миру.

Для того чтобы купить яхту 2018 Pursuit 355 OS — PURSUIT а также проконсультироваться по любому вопросу связанному с покупкой, продажей, чартером яхт позвоните по телефону **+7(918)465-66-44**.

ОГЛАВЛЕНИЕ

ОГЛАВЛЕНИЕ	2
ХАРАКТЕРИСТИКИ	3
Обзор	3
Основная информация	4
Размеры	4
Скорость, вместимость и масса	4
Размещение	4
Информация о двигателе	5
ФОТОГРАФИИ	6
КОНТАКТЫ	14
Контактная информация	14
Телефоны	14
Время работы	14
Адрес	14

ХАРАКТЕРИСТИКИ

Обзор

2018 Pursuit 355 OS LOADED, TURNKEY, READY FOR FAMILY FUN AND OFFSHORE ADVENTURE! DO NOT WAIT TO SEE THIS FRESHWATER KEPT 2018 PURSUIT 355 OFFSHORE! IT IS IN PRISTINE CONDITION, AND WAS BOATHOUSE KEPT UNTIL RECENTLY. Never a company to rest on its laurels, Pursuit Boats sets a new standard with the recent introduction of the OS 355 express. Rather than spruce up the preceding OS 345, the design team built this one from the keel up, adding numerous significant — and stylish — improvements in the process. And the 355 is no slouch in the performance department either. With a 12-foot beam and tipping the scales at nearly 17,000 pounds, the 355 is a formidable craft built for handling whatever nature throws at you. Rated for 700hp, this 2018 355 is rigged with a pair of Yamaha F350 four-strokes. With five big guys aboard, plus full tanks of fuel and water. Top speed is nearly 44 mph. And cruising at 4,000 rpm, the GPS recorded 28.6 mph while burning 29.1 gph. That delivers a range of more than 350 miles, a 7-percent improvement over the OS 345. Like earlier classmates, the 355 handles well with a soft, sure ride thanks to meticulous construction and an aggressive 20-degree deadrise. The bow settles quickly upon acceleration to give the operator a commanding view. You won't get any surprises when punching through waves or in sharp turns with this model. It's also stable at rest. Although the 355 is well suited for extended cruises to islands or new fishing spots, don't let the comfort considerations fool you. This is still a fishing boat at heart. Twin fish boxes in the cockpit deck are equipped with diaphragm pumps to handle scales and other debris. The large tackle center houses all the gear needed for a day offshore. Pursuit was the first to tint its livewells blue in order to calm bait, and that tradition continues with the 28-gallon recirculating livewell here. Fresh- and raw-water washdown systems are installed in the cockpit and the bow anchor compartment. Undergunwale rod racks are augmented by the rocket launcher on the standard molded-fiberglass hardtop. An aft spreader light, dedicated life-jacket storage and LED lights are also standard. Twin aft-facing seats are the ideal vantage points to watch the bait, plus they include insulated storage underneath. An entertainment center with a Bluetooth stereo system, molded sink, electric grill and cutting board complements the bridge deck's refrigerator/freezer that provides quick access to cold beverages or snacks. A bench on the transom and an optional one to starboard offer plenty of seating for your guests and fold completely out of the way when the bite gets hot. The helm on the OS 355 is especially noteworthy, starting with the custom windshield system with an optically clear laminated glass shield, tempered side glass and an electrically actuated center vent window. The result is a distortion-free view and a sense of open air without turbulence. Strataglass side curtains offer additional protection from the elements. The integrated wipers efficiently remove spray. The helm includes dual flip-up footrests to accommodate different heights, an expansive electronics panel, a Teleflex tilt helm with a textured stainless-steel wheel and a control knob, and a molded captain's seat. Companion bench-style seating with storage accommodates guests and crew. The cabin interior is highlighted by custom tongue-and-groove wood flooring, sound-dampening insulation and a nifty digital entertainment center. A solid wood table on an electric actuator converts into a queen V-

berth with fixed cushions, and a bulkhead rod rack stores more tackle. The 16,000 Btu air conditioner with reverse heat is standard, as well as a 50-gallon water tank with a 6-gallon hot-water heater. A Fischer Panda 8 kW diesel generator supplies plenty of power away from the dock. The full galley has Corian countertops, plenty of pantry storage and every appliance needed for overnight stays, including a refrigerator, microwave and dual-burner glass cooktop. The head is roomy, bright, and equipped with a vacuum-flush toilet and a full shower. As for digital connectivity and premium components, Pursuit has again done an amazing job. The OS 355 is a trendsetter for the express segment, and buyers looking to upgrade or move into this style should definitely add this beautiful, well-crafted ride to their shopping list.

Основная информация

Тип судна: Катер для спортивной рыбалки

Модельный год: 2018

Год постройки: 2018

Страна: United States

Размеры

Длина общая: 35' (10.67mm)

Ширина: 12

Макс. осадка: 3' (0.91mm)

Скорость, вместимость и масса

Крейс. скорость: 27.81 Knots Kts. (32 MPH)

Макс. скорость: 37.37 Knots Kts. (43 MPH)

Вместимость воды: 50 Gallons

Вместимость сточного бака: 22 Gal Gallons

Объем топливного бака: 375 Gal Gallons

Размещение

Всего кают: 1

Всего ком. состава: 1

Информация о двигателе

Двигатели: 2

Производитель: Yamaha

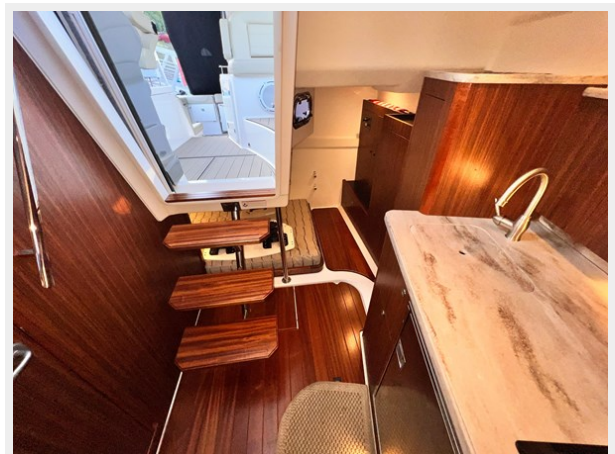
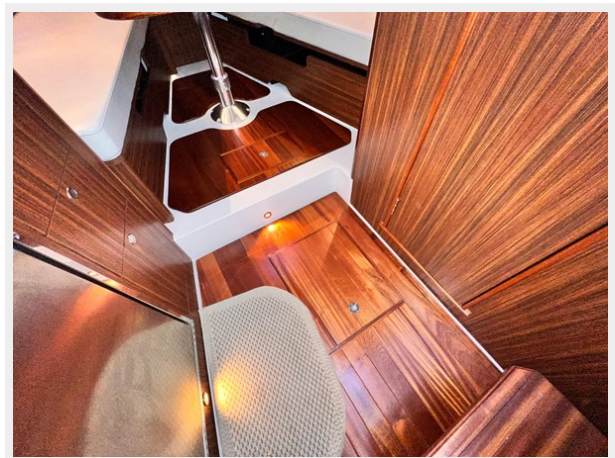
Тип двигателя: Outboard

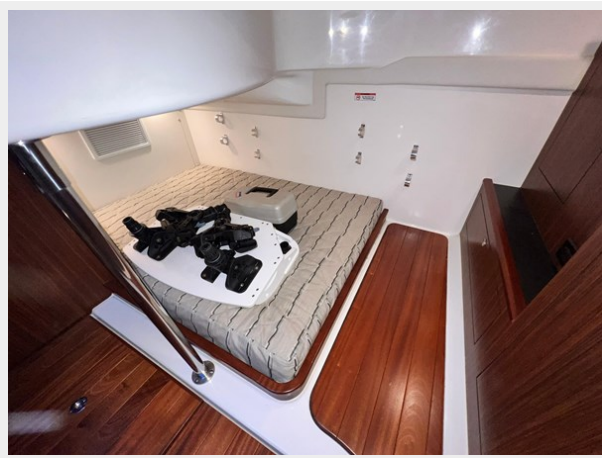
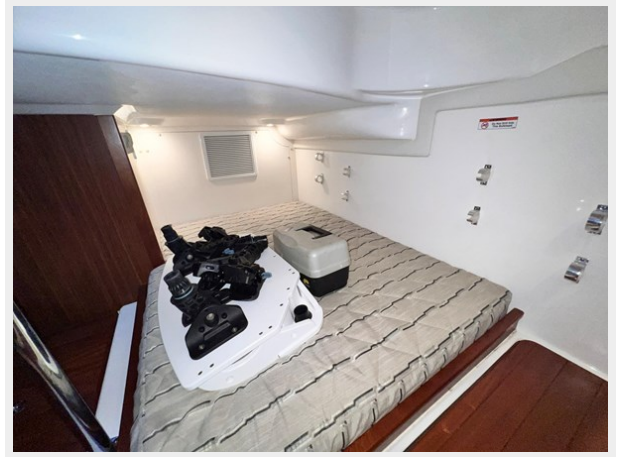
Тип топлива: Gas

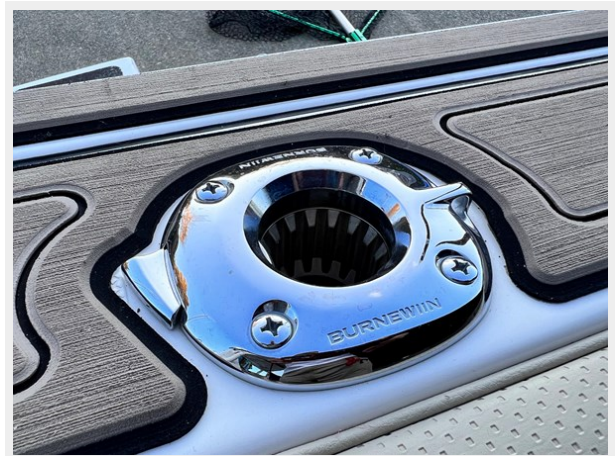
ФОТОГРАФИИ

















КОНТАКТЫ

Андрей Шестаков (Andrey Shestakov) – ведущий яхтенный брокер отдела продаж яхт и судов компании Shestakov Yacht Sales Inc. Официальный представитель Shestakov Yacht Sales Inc. для русскоговорящих клиентов в центральном офисе компании в Майами/Форт Лодердейл/Флорида/США.

Контактная информация

Email: andrey@shestakovyachtsales.com

Web: shestakovyachtsales.com

Телефоны

Краснодарский край: **+7(918)465-66-44**

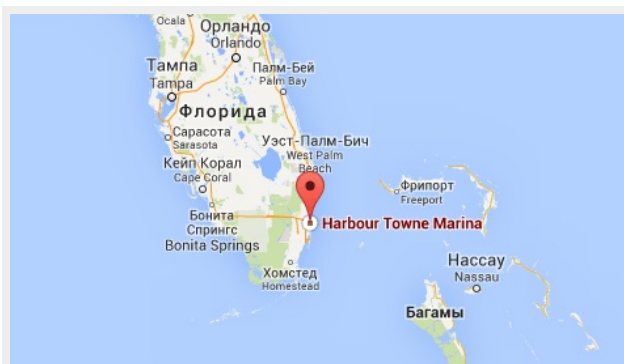
США, Майами, Флорида: **+1(954)274-4435**

Время работы

Понедельник – Суббота: **9:00 - 21:00**
EDT

Воскресенье: **Закрито**

Адрес



Harbour Towne Marina, 850 NE 3rd St,
STE 213, Dania, FL 33004