

## 2000 BENETEAU 311 — BENETEAU



**Builder:** BENETEAU

**Year Built:** 2000

**Model:** cruiser

**Price:** \$59,990 USD

**Location:** United States

**LOA:** 31' (9.45mm)

**Beam:** 10.41

**Max Draft:** 4' 6" (1.37mm)

Our experienced yacht broker, Andrey Shestakov, will help you choose and buy a yacht that best suits your needs 2000 Beneteau 311 — BENETEAU from our catalogue. Presently, at Shestakov Yacht Sales Inc., we have a wide variety of yachts available on our sale's list. We also work in close contact with all the big yacht manufacturers from all over the world.

If you would like to buy a yacht 2000 Beneteau 311 — BENETEAU or would like help answering any questions concerning purchasing, selling or chartering a yacht, please call +1(954)274-4435

---

# TABLE OF CONTENTS

---

TABLE OF CONTENTS	2
SPECIFICATIONS	3
Overview	3
Basic Information	3
Dimensions	3
Speed, Capacities and Weight	3
Accommodations	4
Engine Information	4
PHOTOS	5
CONTACTS	16
Contact details	16
Telephones	16
Office hours	16
Address	16

---

# SPECIFICATIONS

---

## Overview

---

2000 Beneteau 311 SALON DIESEL HEAT & A/CLITHIUM HOUSE BATTERY UPDATED INVERTER ELECTRONIC HEAD NEW RAYMARINE ELECTRONICS WITH RADAR MAXWELL WIRELESS WINDLASS Prepared to be impressed by "Grace." Feature packed and spacious make her the ultimate quick cruiser. Lots of updates including quality new electronics, new salon seat coverings, remote controlled windlass, LED lighting, Lithium House Battery, Victron Energy Color Control Panel and Inverter. The list goes on and on. No other Beneteau 311 is equipped like this one. She features a two cabin, single head layout and it perfect for cruising the Columbia River, the Puget Sound and beyond. The table located in the center of the salon features wine storage and expanding leaves. Spacious galley with propane range and convenient refrigeration built in. Grace has a single Yanmar 18HP Diesel with around 1,100 hours. Access is easy from either the aft stateroom or the salon steps. Her owner unexpectedly passed in the midst of a couple projects so a little TLC is needed. She comes with the bulk of parts needed.

## Basic Information

---

**Category:** cruiser

**Model Year:** 2000

**Year Built:** 2000

**Country:** United States

## Dimensions

---

**LOA:** 31' (9.45mm)

**Beam:** 10.41

**Max Draft:** 4' 6" (1.37mm)

## Speed, Capacities and Weight

---

**Water Capacity:** 52 Gallons

**Holding Tank:** 18 Gal Gallons

**Fuel Capacity:** 18 Gal Gallons

---

## Accommodations

---

**Total Cabins:** 2

**Total Heads:** 1

---

## Engine Information

---

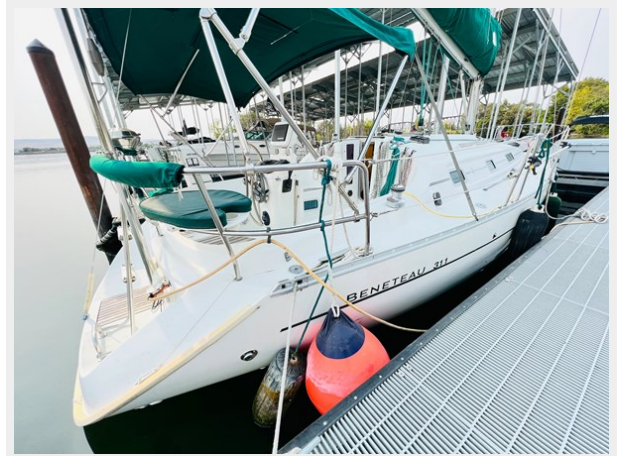
**Engines:** 1

**Manufacturer:** Yanmar

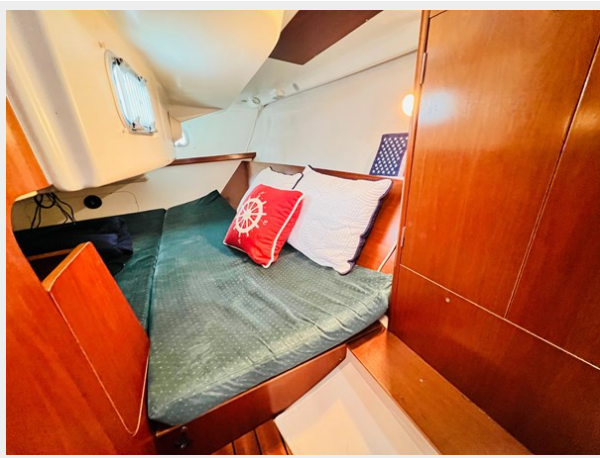
**Engine Type:** Inboard

**Fuel Type:** Diesel

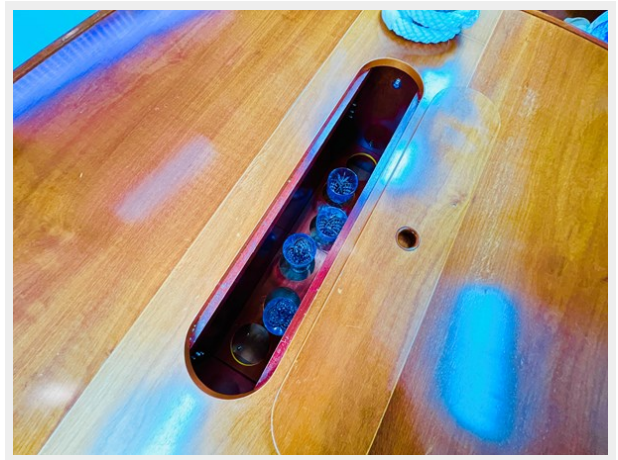
# PHOTOS



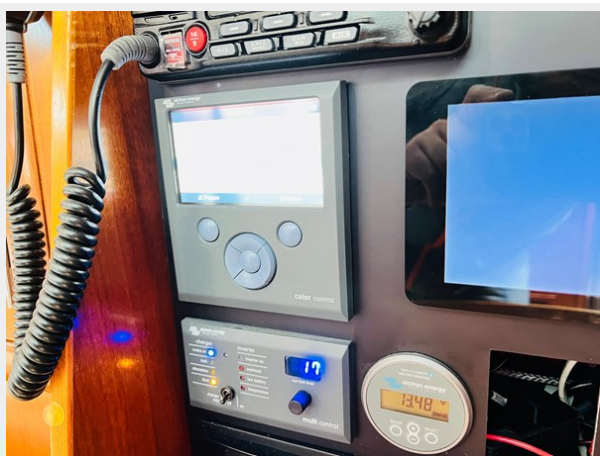
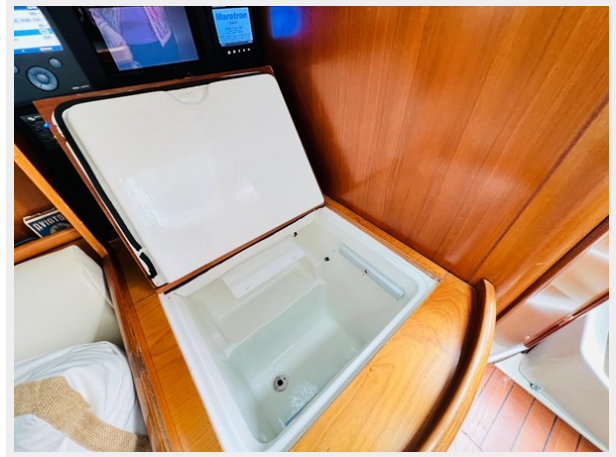








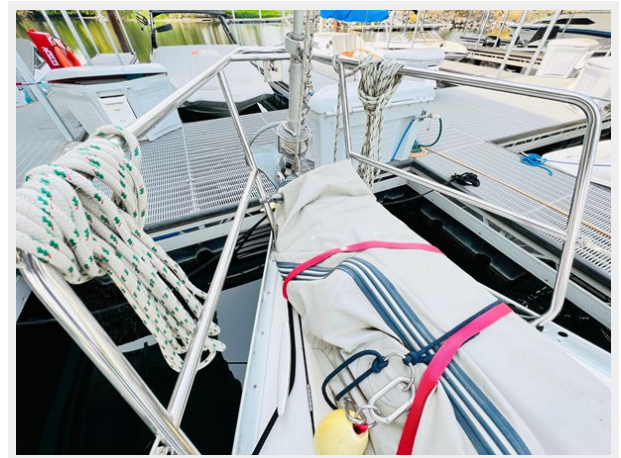








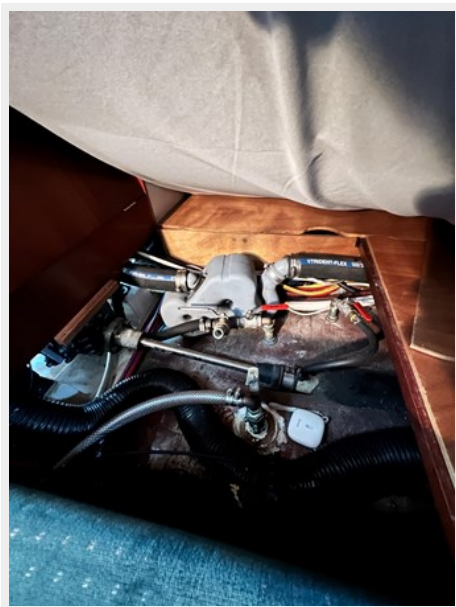
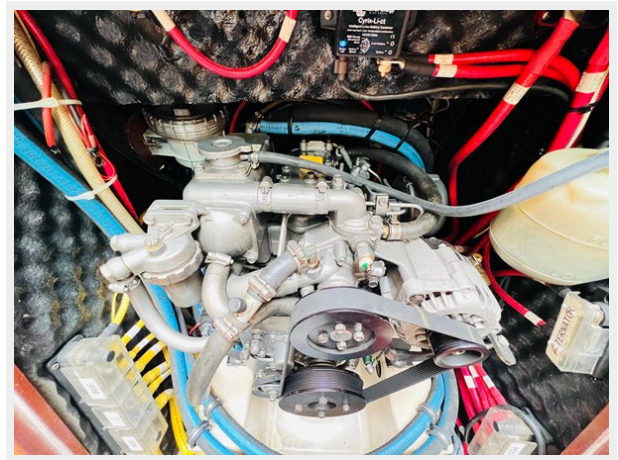
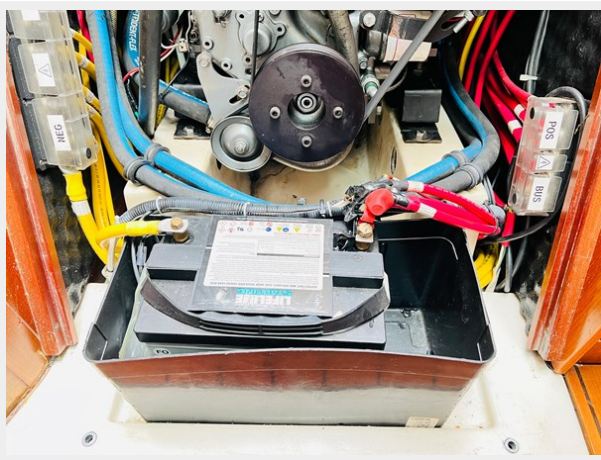
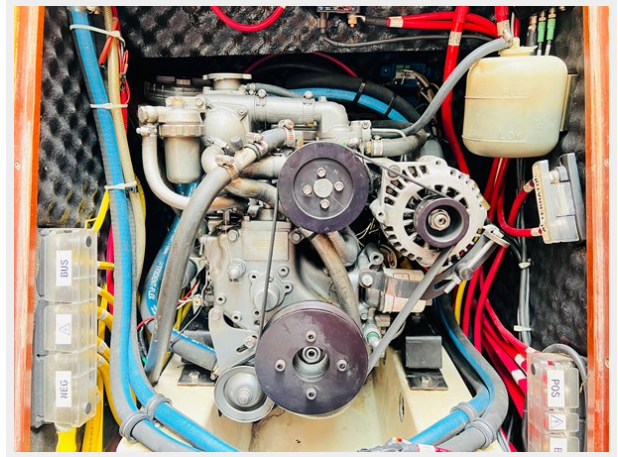




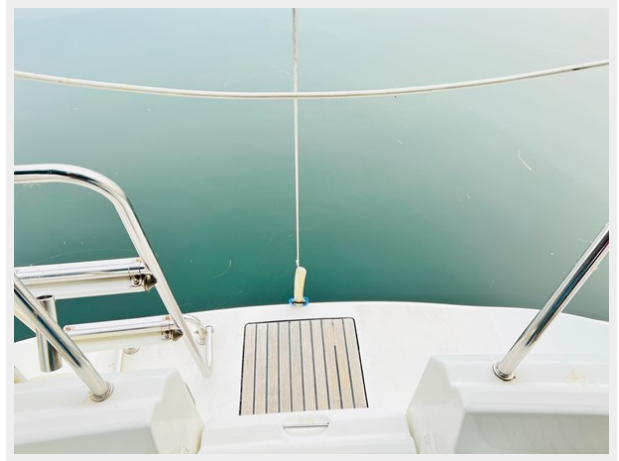


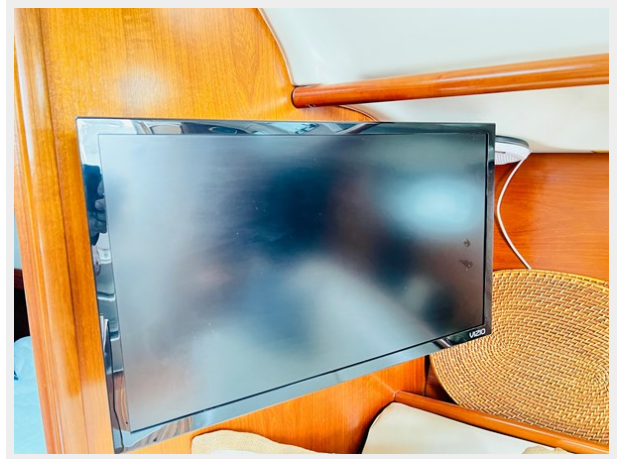
















# CONTACTS

---

Andrey Shestakov, leading yacht broker of the sales department of Shestakov Yacht Sales Inc. Shestakov Yacht Sales Inc., the official representative of the Miami/Fort Lauderdale FL headquarters.

## Contact details

---

Email: [andrey@shestakovyachtsales.com](mailto:andrey@shestakovyachtsales.com)

Web: [shestakovyachtsales.com/en/](http://shestakovyachtsales.com/en/)

## Telephones

---

USA: +1(954)274-4435

## Office hours

---

Monday – Saturday: **9:00 - 21:00** EDT

Sunday: **closed**

## Address

---



Harbour Towne Marina, 850 NE 3rd St,  
STE 213, Dania, FL 33004