

1968 HATTERAS 38' AFT CABIN — HATTERAS



Builder: HATTERAS

Year Built: 1968

Model: Motor Yacht

Price: \$35,000 USD

Location: United States

LOA: 38' (11.58mm)

Beam: 13.66

Max Draft: 4' 3" (1.3mm)

Cruise Speed: 8.5 Knots Kts. (10 MPH)

Max Speed: 14 Knots Kts. (16 MPH)

Our experienced yacht broker, Andrey Shestakov, will help you choose and buy a yacht that best suits your needs 1968 Hatteras 38' Aft Cabin — HATTERAS from our catalogue. Presently, at Shestakov Yacht Sales Inc., we have a wide variety of yachts available on our sale's list. We also work in close contact with all the big yacht manufacturers from all over the world.

If you would like to buy a yacht 1968 Hatteras 38' Aft Cabin — HATTERAS or would like help answering any questions concerning purchasing, selling or chartering a yacht, please call +1(954)274-4435

TABLE OF CONTENTS

TABLE OF CONTENTS	2
SPECIFICATIONS	3
Overview	3
Basic Information	3
Dimensions	3
Speed, Capacities and Weight	3
Accommodations	3
Hull and Deck Information	4
Engine Information	4
PHOTOS	5
CONTACTS	14
Contact details	14
Telephones	14
Office hours	14
Address	14

SPECIFICATIONS

Overview

1968 Hatteras 38' Aft Cabin OWNER HAS MOVED TO EAST COAST, SAYS MAKE OFFER! BOAT MUST GO! 1968 38' Hatteras with recent electrical, plumbing, propane system and monitor. Solid fiberglass hull. Overhauled Detroit engines with 1450 hrs both. New props and backup props. New steering and Raymarine autopilot Starboard engine new factory exhaust manifolds ceramic coated. Port engine done by previous owner. Hydronic heat. Honda Eu3000 with remote start. 10 ft. rib dinghy and brand new 12 hp 2 cycle engine. FANTASTIC BOAT WITH ALL SYSTEMS UPDATED. 8.5 knots at 1500 rpm. NOW ONLY \$35,000!!!!

Basic Information

Category: Motor Yacht

Model Year: 1968

Year Built: 1968

Country: United States

Dimensions

LOA: 38' (11.58mm)

Beam: 13.66

Max Draft: 4' 3" (1.3mm)

Speed, Capacities and Weight

Cruise Speed: 8.5 Knots Kts. (10 MPH)

Max Speed: 14 Knots Kts. (16 MPH)

Water Capacity: 80 Gallons

Holding Tank: 60 Gal Gallons

Fuel Capacity: 475 Gal Gallons

Accommodations

Sleeps: 12

Total Heads: 2

Hull and Deck Information

Hull Material: Fiberglass

Engine Information

Engines: 2

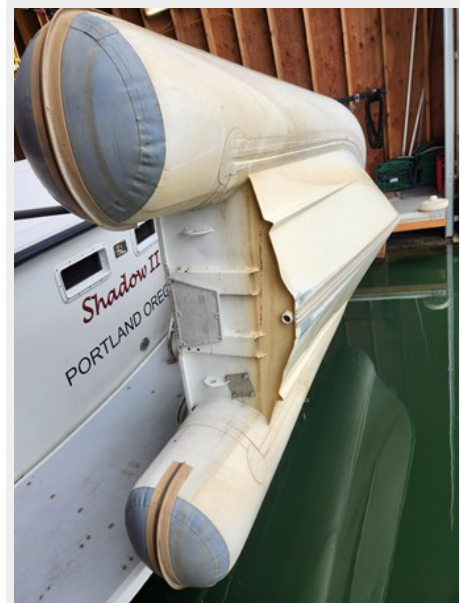
Manufacturer: Detroit Diesel

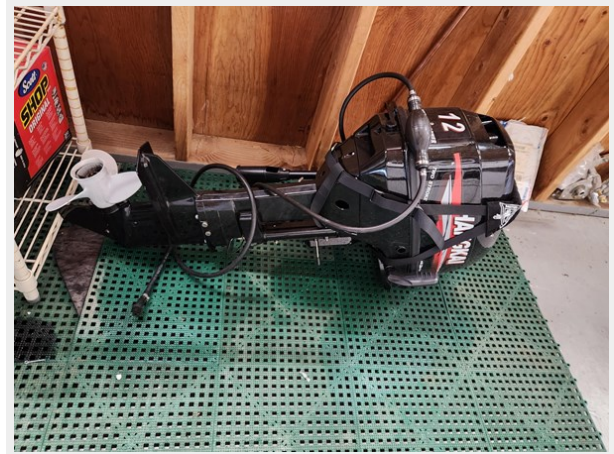
Engine Type: Inboard

Fuel Type: Diesel

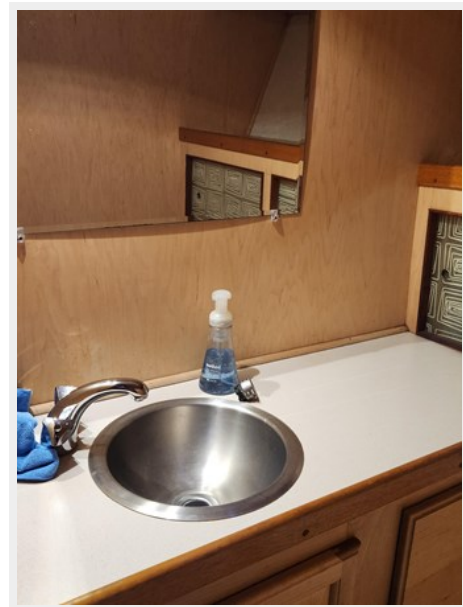
PHOTOS





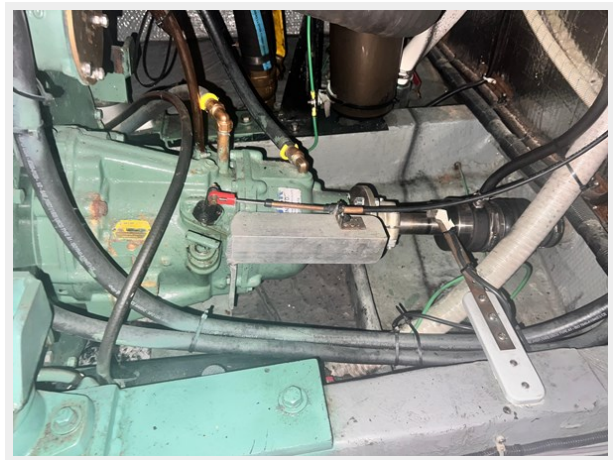
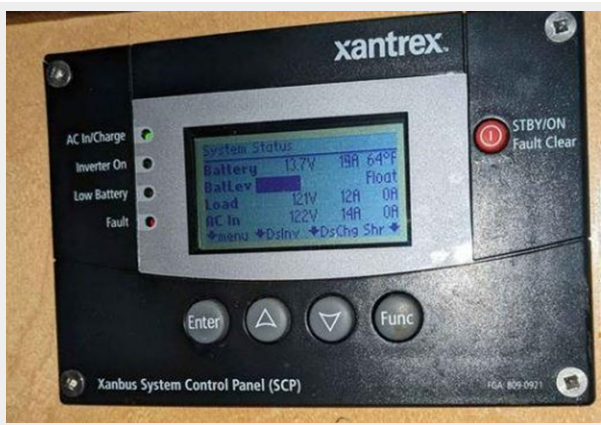
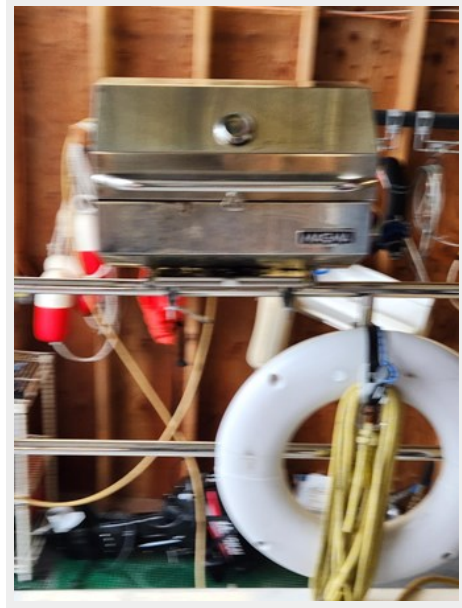














CONTACTS

Andrey Shestakov, leading yacht broker of the sales department of Shestakov Yacht Sales Inc. Shestakov Yacht Sales Inc., the official representative of the Miami/Fort Lauderdale FL headquarters.

Contact details

Email: andrey@shestakovyachtsales.com

Web: shestakovyachtsales.com/en/

Telephones

USA: +1(954)274-4435

Office hours

Monday – Saturday: **9:00 - 21:00** EDT

Sunday: **closed**

Address



Harbour Towne Marina, 850 NE 3rd St,
STE 213, Dania, FL 33004