

1990 SEA RAY 420 SUNDANCER — SEA RAY



Builder: SEA RAY

Year Built: 1990

Model: cruiser

Price: \$30,000 USD

Location: United States

LOA: 42' (12.8mm)

Beam: 13.75

Cruise Speed: 16 Knots Kts. (18 MPH)

Max Speed: 28 Knots Kts. (32 MPH)

Our experienced yacht broker, Andrey Shestakov, will help you choose and buy a yacht that best suits your needs 1990 Sea Ray 420 Sundancer — SEA RAY from our catalogue. Presently, at Shestakov Yacht Sales Inc., we have a wide variety of yachts available on our sale's list. We also work in close contact with all the big yacht manufacturers from all over the world.

If you would like to buy a yacht 1990 Sea Ray 420 Sundancer — SEA RAY or would like help answering any questions concerning purchasing, selling or chartering a yacht, please call +1(954)274-4435

TABLE OF CONTENTS

TABLE OF CONTENTS	2
SPECIFICATIONS	3
Overview	3
Basic Information	3
Dimensions	3
Speed, Capacities and Weight	4
Accommodations	4
Hull and Deck Information	4
Engine Information	4
PHOTOS	5
CONTACTS	9
Contact details	9
Telephones	9
Office hours	9
Address	9

SPECIFICATIONS

Overview

1990 Sea Ray 420 Sundancer The Sea Ray Sundancer 420 is a luxurious and spacious cabin cruiser designed for comfortable cruising on lakes and near coastal waters.

Vessel Details:
Name: Sweet Lady
Builder: Sea Ray Boats, Knoxville, TN
Model/Type: Sundancer 420
Year: 1990
Length Overall (LOA): 47 feet 1 inch
Beam: 13 feet 11 inches
Draft: 3 feet 3 inches
Hull Material: Fiberglass
Accommodations: Sleeps 4
Color: White with blue trim
Engine & Power: Twin Chevrolet 350 cubic inch gasoline inboard engines provide ample power for cruising.
Engine Type: Inboard
Engine Hours: Approximately 2300 hours
Currently located in Coos Bay, Oregon.

Accommodations & Interior: Spacious cabin layout with accommodations for up to 4 guests. Comfortable sleeping quarters ideal for extended trips. Well-appointed interior with carpeted flooring and textile headliner. Galley equipped with cooktop, refrigerator, and water heater. Central vacuum system for convenient cleaning. Climate control provided by (2) Marine Air Systems air conditioning units.

Safety & Navigation Equipment: Navigation equipment includes a spherical 4" Ritchie compass. Operational Colregs navigation lights ensure visibility at night. Standard Horizon Galaxy and cab 40+4 VHF radios for communication. Raytheon R21X Raster Scan radar and RayNav 540 LORAN for navigation. Datamarine Dart 2490 log speed depth temp for tracking vessel performance. Chart Link II system for navigation assistance. Deck equipped with throwable flotation devices and life rafts. Distress signal kit and handheld canned air horn for emergency signaling. Fire extinguishers and smoke detectors for onboard safety.

Deck & Exterior Features: Fiberglass construction with non-skid decking for durability and safety. Swim platform with city water connection and washdown. Stainless steel cockpit Biminis for shade and protection. Vented windshield with wipers for improved visibility. Cockpit wet bar with ice maker for entertaining guests. Remote operated spotlight for enhanced visibility in low light conditions.

Basic Information

Category: cruiser

Sub Category: Express

Model Year: 1990

Year Built: 1990

Country: United States

Dimensions

LOA: 42' (12.8mm)

Beam: 13.75

Speed, Capacities and Weight

Cruise Speed: 16 Knots Kts. (18 MPH)

Max Speed: 28 Knots Kts. (32 MPH)

Fuel Capacity: 400 Gal Gallons

Accommodations

Total Cabins: 2

Sleeps: 4

Hull and Deck Information

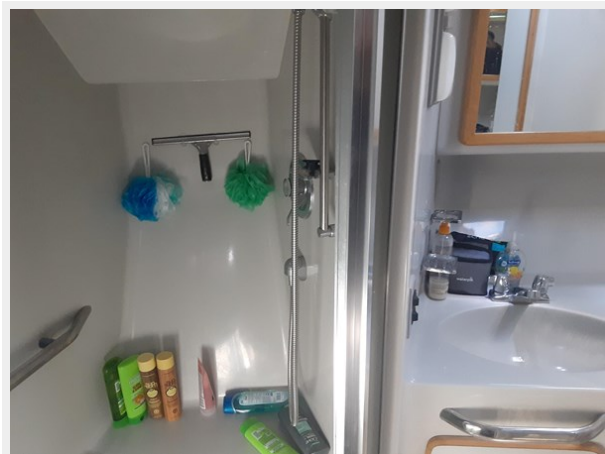
Hull Material: Fiberglass

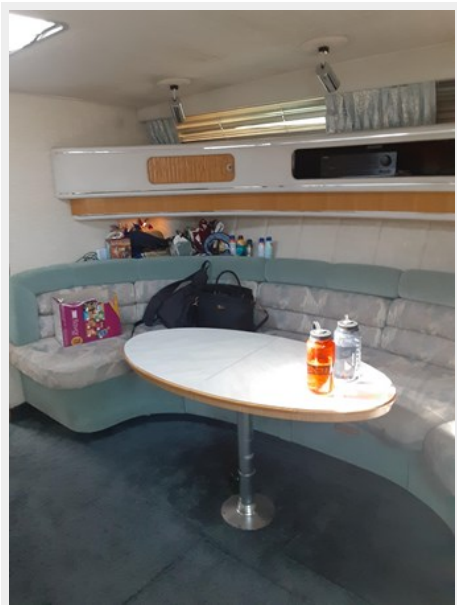
Engine Information

Engines: 1

Manufacturer: Chevy

PHOTOS









CONTACTS

Andrey Shestakov, leading yacht broker of the sales department of Shestakov Yacht Sales Inc. Shestakov Yacht Sales Inc., the official representative of the Miami/Fort Lauderdale FL headquarters.

Contact details

Email: andrey@shestakovyachtsales.com

Web: shestakovyachtsales.com/en/

Telephones

USA: +1(954)274-4435

Office hours

Monday – Saturday: **9:00 - 21:00** EDT

Sunday: **closed**

Address



Harbour Towne Marina, 850 NE 3rd St,
STE 213, Dania, FL 33004