

AGNES — SANLORENZO



Builder: SANLORENZO

Year Built: 2019

Model: Motor Yacht

Price: €4,900,000 EUR

Location: Singapore

LOA: 87' 8" (26.7m)

Beam: 23.65

Cruise Speed: 20 Knots Kts. (23 MPH)

Max Speed: 23 Knots Kts. (26 MPH)

Our experienced yacht broker, Andrey Shestakov, will help you choose and buy a yacht that best suits your needs **Agnes — SANLORENZO** from our catalogue. Presently, at Shestakov Yacht Sales Inc., we have a wide variety of yachts available on our sale's list. We also work in close contact with all the big yacht manufacturers from all over the world.

If you would like to buy a yacht **Agnes — SANLORENZO** or would like help answering any questions concerning purchasing, selling or chartering a yacht, please call **+1(954)274-4435**

TABLE OF CONTENTS

TABLE OF CONTENTS	2
SPECIFICATIONS	3
Overview	3
Basic Information	3
Dimensions	3
Speed, Capacities and Weight	3
Accommodations	4
Hull and Deck Information	4
Engine Information	4
PHOTOS	5
CONTACTS	9
Contact details	9
Telephones	9
Office hours	9
Address	9

SPECIFICATIONS

Overview

Beautifully appointed and carefully maintained 2019 Sanlorenzo SX88 for sale.

Graceful in her lines, yet robust and steady in the water, this particular SX88 is beautifully specified with a light and modern interior using different wood, marble and fabric textures to provide a subtle yet lively and interesting decor. The SX is Sanlorenzo's fleet of revolutionary "crossover" yacht with a fast displacement hull, powered by triple Volvo IPS1050 engines, it cruises at a comfortable 20 knots with a top speed around 23 knots. As always standing out against competing shipyards, a jet-tender of up to 4.5m can fit on the SX88's swim platform (a rare feature in this size range).

Sophisticated owners will appreciate the floor to ceiling windows on the main deck, with the main saloon bathing in natural light, making the entire space seem even bigger than it already is. Another beautiful design feature of the SX is the interior floating staircase, which leads up to the flybridge, covered by a smartly operated hardtop for ample shade with plentiful space where guests can enjoy the views. The flybridge is an oasis of calm with free standing designer furniture and a well-equipped Boffi galley-giving the feeling of a luxury villa on the sea. This sleek Italian motor yacht presents an incredible opportunity for you to join the elite family of Sanlorenzo owners worldwide.

Basic Information

Category: Motor Yacht

Model Year: 2019

Year Built: 2019

Country: Singapore

Dimensions

LOA: 87' 8" (26.7mm)

Beam: 23.65

Speed, Capacities and Weight

Cruise Speed: 20 Knots Kts. (23 MPH)

Max Speed: 23 Knots Kts. (26 MPH)

Water Capacity: 2000 Gallons

Fuel Capacity: 2456.8 Gal Gallons

Accommodations

Total Cabins: 4

Hull and Deck Information

Hull Material: Composite

Engine Information

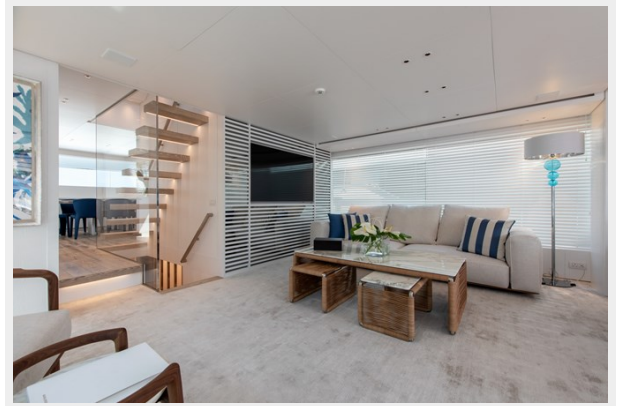
Engines: 3

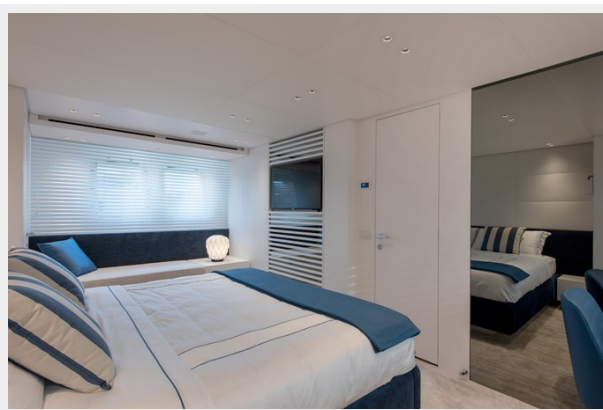
Manufacturer: Volvo

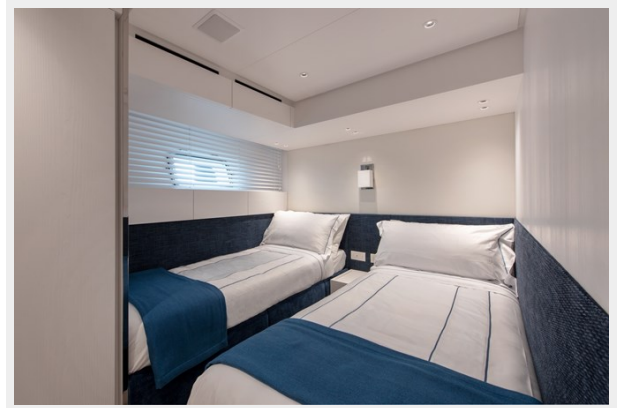
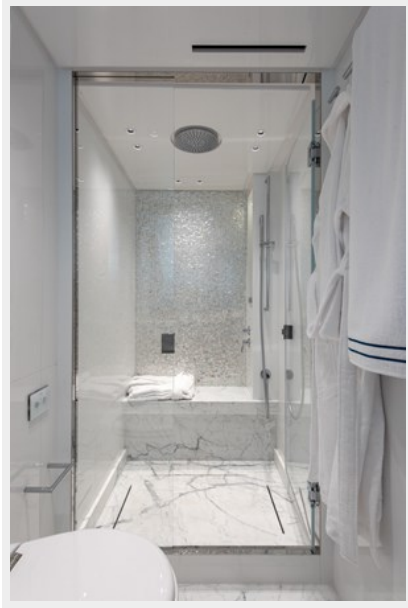
Engine Type: Inboard

Fuel Type: Diesel

PHOTOS









CONTACTS

Andrey Shestakov, leading yacht broker of the sales department of Shestakov Yacht Sales Inc. Shestakov Yacht Sales Inc., the official representative of the Miami/Fort Lauderdale FL headquarters.

Contact details

Email: andrey@shestakovyachtsales.com

Web: shestakovyachtsales.com/en/

Telephones

USA: +1(954)274-4435

Office hours

Monday – Saturday: **9:00 - 21:00** EDT

Sunday: **closed**

Address



Harbour Towne Marina, 850 NE 3rd St,
STE 213, Dania, FL 33004