

1955 COLIN ARCHER 42 — COLIN ARCHER



Builder: COLIN ARCHER

LOA: 42' (12.8mm)

Year Built: 1955

Beam: 14.41

Model: trawler

Price: \$110,000 USD

Location: United States

Our experienced yacht broker, Andrey Shestakov, will help you choose and buy a yacht that best suits your needs 1955 Colin Archer 42 — COLIN ARCHER from our catalogue. Presently, at Shestakov Yacht Sales Inc., we have a wide variety of yachts available on our sale's list. We also work in close contact with all the big yacht manufacturers from all over the world.

If you would like to buy a yacht 1955 Colin Archer 42 — COLIN ARCHER or would like help answering any questions concerning purchasing, selling or chartering a yacht, please call +1(954)274-4435

TABLE OF CONTENTS

TABLE OF CONTENTS	2
SPECIFICATIONS	3
Overview	3
Basic Information	3
Dimensions	3
Speed, Capacities and Weight	3
Accommodations	4
Hull and Deck Information	4
Engine Information	4
PHOTOS	5
CONTACTS	18
Contact details	18
Telephones	18
Office hours	18
Address	18

SPECIFICATIONS

Overview

1955 Colin Archer 42 Stunning 1955 Colin Archer Design 42 from Norway. All wood construction with a gleaming recent survey. The current owner estimates he has spent over \$200k on the boat throughout her restoration. Romantic, charming, and seaworthy perfectly define this trawler. Powered by a single Perkins T6.354M turbocharged diesel, she's an efficient cruiser. Two fuel tanks are on board totaling 400 gallons. Electronics are recently updated with Simrad Multi-function display and radar. She's also equipped with autopilot (Simrad AP44) and depth sounder (Raymarine i40). Magnum inverter is on board with 8 6V batteries. Down below her accommodations are just as charming. Rounded doorways provide entrances to two staterooms, one located forward and one to the starboard side, both featuring large double berths. The galley has plenty of cooking space with medium sized fridge/freezer combo, microwave and gas range. Forward of the galley is a workspace/chart desk. The head features a large shower stall and plenty of storage. Going back up to the pilothouse you will find a large circular dinette that basks in the stunning views from the rounded aft wall. Seating for 7 or 8 comfortably to enjoy a nice dinner on the hook. Many nights off the grid can be had with a 200 gallon fresh water tank. On the bow there is two anchor roller brackets as well as an Ideal anchor windlass. Working lights illuminate the forward deck.

Basic Information

Category: trawler

Model Year: 1955

Year Built: 1955

Country: United States

Dimensions

LOA: 42' (12.8mm)

Beam: 14.41

Speed, Capacities and Weight

Water Capacity: 200 Gallons

Fuel Capacity: 400 Gal Gallons

Accommodations

Total Cabins: 2

Total Heads: 1

Hull and Deck Information

Hull Designer: COLIN ARCHER

Engine Information

Engines: 1

Manufacturer: Perkins

Engine Type: Inboard

Fuel Type: Diesel

PHOTOS

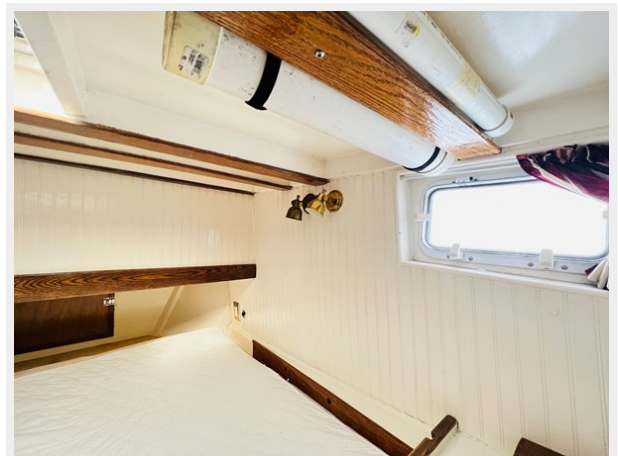
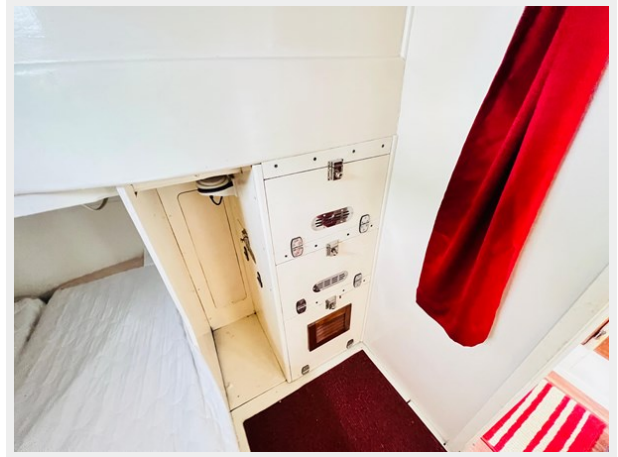












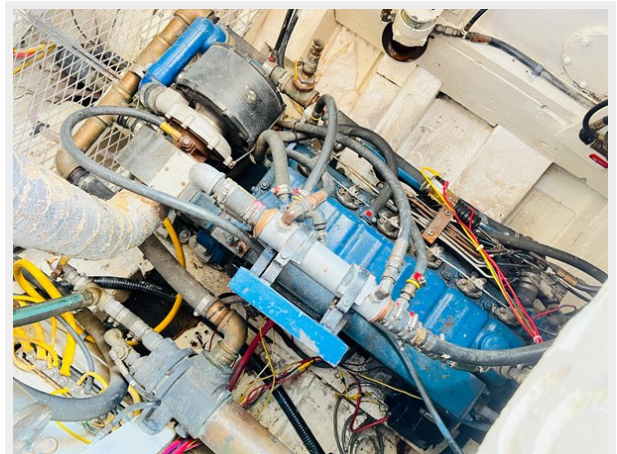
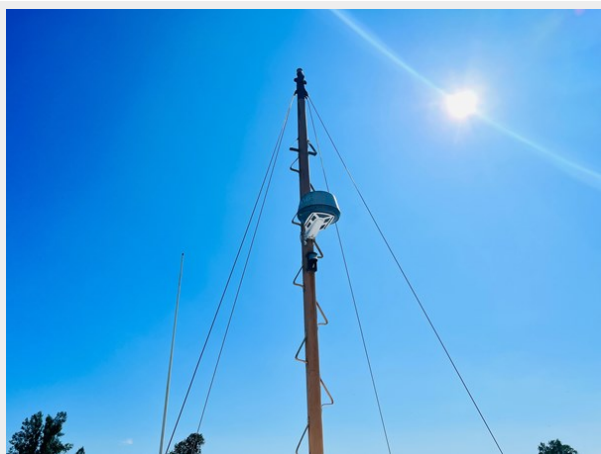














CONTACTS

Andrey Shestakov, leading yacht broker of the sales department of Shestakov Yacht Sales Inc. Shestakov Yacht Sales Inc., the official representative of the Miami/Fort Lauderdale FL headquarters.

Contact details

Email: andrey@shestakovyachtsales.com

Web: shestakovyachtsales.com/en/

Telephones

USA: +1(954)274-4435

Office hours

Monday – Saturday: **9:00 - 21:00** EDT

Sunday: **closed**

Address



Harbour Towne Marina, 850 NE 3rd St,
STE 213, Dania, FL 33004