

DON'T TELL MOM — SANLORENZO



Builder: SANLORENZO

Year Built: 2020

Model: Motor Yacht

Price: \$8,300,000 USD

Location: United States

LOA: 96' (29.26mm)

Beam: 25

Max Draft: 6' 6" (1.98mm)

Cruise Speed: 14 Knots Kts. (16 MPH)

Max Speed: 19 Knots Kts. (22 MPH)

Our experienced yacht broker, Andrey Shestakov, will help you choose and buy a yacht that best suits your needs **Don't Tell Mom — SANLORENZO** from our catalogue. Presently, at Shestakov Yacht Sales Inc., we have a wide variety of yachts available on our sale's list. We also work in close contact with all the big yacht manufacturers from all over the world.

If you would like to buy a yacht **Don't Tell Mom — SANLORENZO** or would like help answering any questions concerning purchasing, selling or chartering a yacht, please call **+1(954)274-4435**

TABLE OF CONTENTS

| | |
|------------------------------|---|
| TABLE OF CONTENTS | 2 |
| SPECIFICATIONS | 4 |
| Overview | 4 |
| Basic Information | 5 |
| Dimensions | 5 |
| Speed, Capacities and Weight | 5 |
| Accommodations | 5 |
| Hull and Deck Information | 5 |
| Engine Information | 5 |
| PHOTOS | 6 |
| Bow | 6 |
| Sanlorenzo SD96 | 6 |
| Sanlorenzo SD96 | 6 |
| Sanlorenzo SD96 | 6 |
| 96aerials-11 | 6 |
| Stern | 6 |
| DSC_9299 | 7 |
| DSC_9305 | 7 |
| DSC_9298 | 7 |
| DSC_9138 | 7 |
| DSC_9294-Edit | 7 |
| DSC_9324 | 7 |
| DSC_9076-Edit | 8 |
| DSC_9089 | 8 |
| DSC_8873 | 8 |
| DSC_8884 | 8 |
| DSC_8889 | 8 |
| DSC_8925 | 8 |

| | |
|-----------------|----|
| DSC_8957 | 9 |
| DSC_8976 | 9 |
| DSC_9028 | 9 |
| DSC_9060 | 9 |
| DSC_9064 | 9 |
| DSC_9108 | 9 |
| DSC_9126 | 10 |
| DSC_9132 | 10 |
| DSC_9144 | 10 |
| DSC_9164 | 10 |
| DSC_9249 | 10 |
| DSC_9256 | 10 |
| DSC_9279 | 11 |
| DSC_9354 | 11 |
| DSC_9369 | 11 |
| DSC_9392 | 11 |
| DSC_9394 | 11 |
| DSC_9405 | 11 |
| DSC_9406 | 12 |
| DSC_9415 | 12 |
| CONTACTS | 13 |
| Contact details | 13 |
| Telephones | 13 |
| Office hours | 13 |
| Address | 13 |

SPECIFICATIONS

Overview

2021 San Lorenzo SD96 'Don't Tell Mom'

The interiors are warm and welcoming, yet with a modern and sophisticated overall look.

The principal living area is located on the main deck; it's function can be increased by setting up a dining table for 10 people, cleverly folded away inside a bench in front of the sofa.

We then move on to the central staircase, designed to reach the other two bridges, and is a focal and iconic point that connects all the floors and also serves to divide the areas via a metal mesh screen.

Moving on to the upper deck we find the Sky lounge, with fully opening windows that can be used as a living room, dining area, or cinema, thanks to modular furniture.

The flybridge can also be used as a lounge or outdoor dining area, thanks to the coffee table which can be converted to a dining table if desired.

The principle of flexibility returns to the lower deck where the living room can be totally transformed by closing a system of sliding panels, creating a VIP cabin with bathroom.

On the same level, there are also two guest cabins, while the owner's cabin is located on the main deck.

Much wider in width than those offered on yachts of similar sizes, the owner's cabin has large windows that create a feeling of uniformity with the surrounding environment.

Don't Tell Mom is a highly customized yacht with hand-selected details chosen by an experienced yachter.

Notable features include an extensively upgraded AV system, including a KVH HD7 SAT TV and a 4G wi-fi with hot spot.

The exterior of the yacht is complete with teak decking throughout, a sun awning for the upper deck- aft, upgraded skylounge side doors (in lieu of standard fixed glass), and a sliding bulwark starboard.

Upgraded electronics include a portable MTU control station and additional wing station with engine throttles and bow thruster.

Don't Tell Mom is located in Fort Lauderdale, Florida, November - April, and in New York City, May - October.

Basic Information

Category: Motor Yacht

Model Year: 2021

Year Built: 2020

Country: United States

Dimensions

LOA: 96' (29.26mm)

Beam: 25

Max Draft: 6' 6" (1.98mm)

Speed, Capacities and Weight

Cruise Speed: 14 Knots Kts. (16 MPH)

Cruise Speed Range: 1700

Max Speed: 19 Knots Kts. (22 MPH)

Accommodations

Total Cabins: 4

Total Heads: 5

Crew Berths: 3

Crew Heads: 3

Hull and Deck Information

Hull Material: Fiberglass

Engine Information

Engines: 2

Manufacturer: MTU

Engine Type: Inboard

Fuel Type: Diesel

PHOTOS

Bow



Sanlorenzo SD96



Sanlorenzo SD96



Sanlorenzo SD96



Stern



96aerials-11



DSC_9299



DSC_9305



DSC_9298



DSC_9138



DSC_9294-Edit



DSC_9324



DSC_9076-Edit



DSC_9089



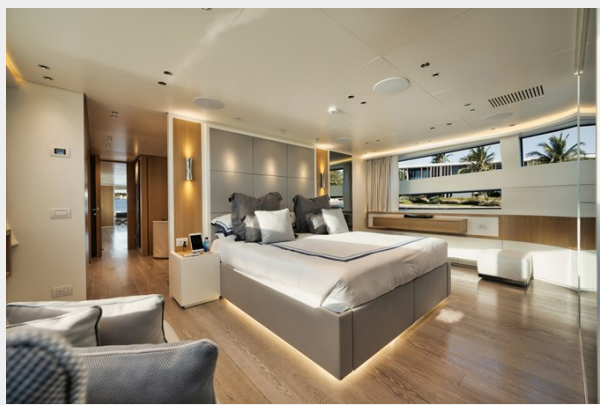
DSC_8873



DSC_8884



DSC_8889



DSC_8925



DSC_8957



DSC_8976



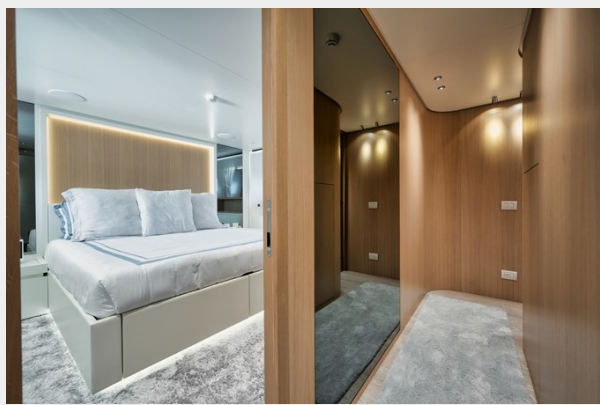
DSC_9028



DSC_9060



DSC_9064



DSC_9108



DSC_9126



DSC_9132



DSC_9144



DSC_9164



DSC_9249



DSC_9256



DSC_9279



DSC_9354



DSC_9369



DSC_9392



DSC_9394



DSC_9405



DSC_9406



DSC_9415



CONTACTS

Andrey Shestakov, leading yacht broker of the sales department of Shestakov Yacht Sales Inc. Shestakov Yacht Sales Inc., the official representative of the Miami/Fort Lauderdale FL headquarters.

Contact details

Email: andrey@shestakovyachtsales.com

Web: shestakovyachtsales.com/en/

Telephones

USA: +1(954)274-4435

Office hours

Monday – Saturday: **9:00 - 21:00** EDT

Sunday: **closed**

Address



Harbour Towne Marina, 850 NE 3rd St,
STE 213, Dania, FL 33004