

IONIAN PRINCESS — CHRISTENSEN



Builder: CHRISTENSEN

Year Built: 2005

Model: Semi-Displacement

Price: \$12,700,000 USD

Location: United States

LOA: 150' (45.72mm)

Beam: 28

Min Draft: 7' 10" (2.39mm)

Max Draft: 8' 10" (2.69mm)

Cruise Speed: 12 Knots Kts. (14 MPH)

Max Speed: 18 Knots Kts. (21 MPH)

Our experienced yacht broker, Andrey Shestakov, will help you choose and buy a yacht that best suits your needs **IONIAN PRINCESS — CHRISTENSEN** from our catalogue. Presently, at Shestakov Yacht Sales Inc., we have a wide variety of yachts available on our sale's list. We also work in close contact with all the big yacht manufacturers from all over the world.

If you would like to buy a yacht **IONIAN PRINCESS — CHRISTENSEN** or would like help answering any questions concerning purchasing, selling or chartering a yacht, please call **+1(954)274-4435**

TABLE OF CONTENTS

TABLE OF CONTENTS	2
SPECIFICATIONS	4
Overview	4
Basic Information	4
Dimensions	4
Speed, Capacities and Weight	5
Accommodations	5
Hull and Deck Information	5
Engine Information	5
PHOTOS	6
IONIAN PRINCESS	6
IONIAN PRINCESS	6
Sun Deck	6
Main Salon	6
Main Salon	6
Main Salon	6
Galley	7
Main Salon Dining	7
Master Private Office	7
Master Stateroom	7
Master En Suite	7
Lower Deck Foyer	7
Guest 1 Stateroom	8
Guest 1 En Suite	8
Guest 2 Stateroom	8
Guest 3 Stateroom	8
Guest 5 Stateroom OR Massage Room	8
Bridge Aft Dining	8

Skylounge	9
Skylounge Bar	9
Skylounge Owners office	9
Wheelhouse	9
Sun Deck Bar	9
Wheelhouse	9
Sun Deck Bar	10
Sun Deck Dining	10
Sun Deck	10
Jacuzzi	10
IONIAN PRINCESS	10
Swim Platform	10
Engine Room	11
IONIAN PRINCESS	11
IONIAN PRINCESS	11
CONTACTS	12
Contact details	12
Telephones	12
Office hours	12
Address	12

SPECIFICATIONS

Overview

IONIAN PRINCESS is a distinguished 150' (45.73m) motor yacht, crafted by two renowned American shipyards: Christensen Yachts and Palmer Johnson. Originally built in 2005, IONIAN PRINCESS is a tri-deck yacht with six staterooms featuring a versatile layout, expansive interior spaces, and ample exterior deck areas ideal for entertaining. IONIAN PRINCESS underwent an extensive refit in 2022, where the interior was entirely reimaged through a collaboration between the previous owners and Yacht Next. Additionally, the engine room received a complete overhaul, with brand new Caterpillar C-32 engines and fully rebuilt generators. In 2023-2024 she underwent another refit with a focus on mechanical upgrades and maintenance. Accommodating up to 12 guests in six staterooms, with a massage room that can be converted into a seventh stateroom, IONIAN PRINCESS offers exceptional flexibility. This includes a full-beam master suite on the main deck with a marble-clad en suite, one VIP stateroom, three double cabins, and one twin. Guests will be delighted by the options for al fresco dining on the sun deck and upper aft deck, along with formal dining in the main deck dining area. An etched glass door adds flexibility, allowing for the creation of an intimate evening ambiance when desired. The sundeck features a large Jacuzzi, comfortable seating, a barbecue, and stunning panoramic views. At night, the sky lounge transforms into a cinema, complemented by a variety of onboard games. During the day, water sports enthusiasts can enjoy a large collection of toys and tenders available from the yacht's spacious swim platform.

Basic Information

Category: Semi-Displacement

Sub Category: Semi-Displacement

Model Year: 2005

Year Built: 2005

Country: United States

Dimensions

LOA: 150' (45.72mm)

LWL: 139' 9" (42.6mm)

Beam: 28

Min Draft: 7' 10" (2.39mm)

Max Draft: 8' 10" (2.69mm)

Speed, Capacities and Weight

Cruise Speed: 12 Knots Kts. (14 MPH)

Cruise Speed Range: 2000

Max Speed: 18 Knots Kts. (21 MPH)

Gross Tonnage: 416 Pounds

Water Capacity: 1500 Gallons

Holding Tank: 1447 Gal Gallons

Fuel Capacity: 9312 Gal Gallons

Fuel Consumption: 124 Gal Gallons

Accommodations

Total Cabins: 6

Sleeps: 12

Total Heads: 8

Crew Cabin: 9

Hull and Deck Information

Hull Material: GRP

Deck Material: Teak

Hull Configuration: Semi-Displacement

Hull Color: White

Hull Designer: Christensen

Exterior Designer: Setzer Design
Group/Fernando Torres

Interior Designer: Pavlik Design
Team/Fernando Torres

Engine Information

Engines: 2

Manufacturer: Caterpillar

Engine Type: Inboard

Fuel Type: Diesel

PHOTOS

IONIAN PRINCESS



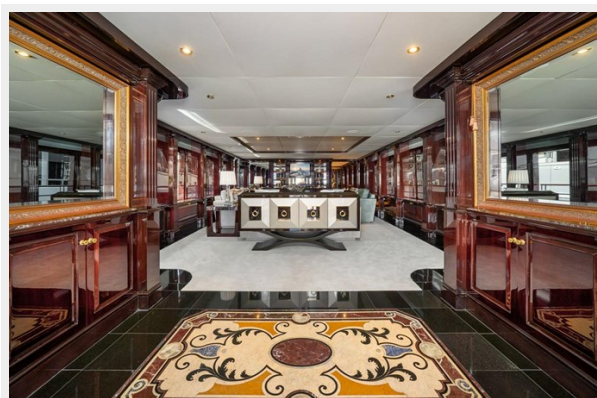
IONIAN PRINCESS



Sun Deck



Main Salon



Main Salon



Main Salon



Main Salon Dining



Galley



Master Private Office



Master Stateroom



Master En Suite



Lower Deck Foyer



Guest 1 Stateroom



Guest 1 En Suite



Guest 2 Stateroom



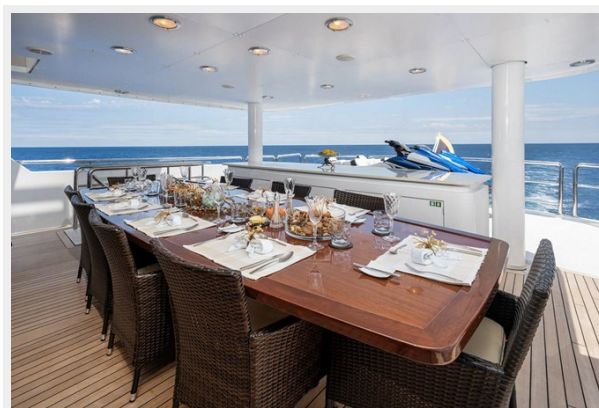
Guest 3 Stateroom



Guest 5 Stateroom OR Massage Room



Bridge Aft Dining



Skylounge



Skylounge Bar



Skylounge Owners office



Wheelhouse



Wheelhouse



Sun Deck Bar



Sun Deck Bar



Sun Deck Dining



Sun Deck



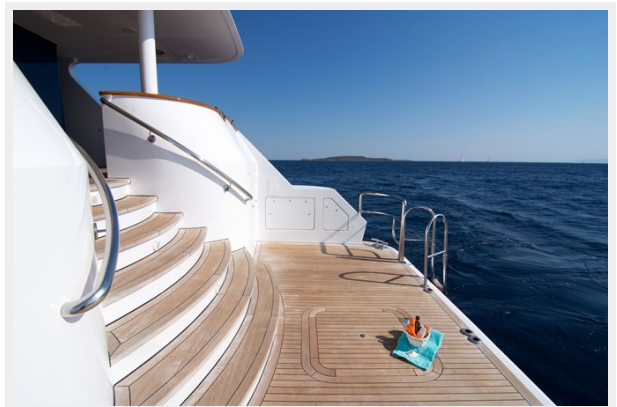
Jacuzzi



IONIAN PRINCESS



Swim Platform



Engine Room



IONIAN PRINCESS



IONIAN PRINCESS



CONTACTS

Andrey Shestakov, leading yacht broker of the sales department of Shestakov Yacht Sales Inc. Shestakov Yacht Sales Inc., the official representative of the Miami/Fort Lauderdale FL headquarters.

Contact details

Email: andrey@shestakovyachtsales.com

Web: shestakovyachtsales.com/en/

Telephones

USA: +1(954)274-4435

Office hours

Monday – Saturday: **9:00 - 21:00** EDT

Sunday: **closed**

Address



Harbour Towne Marina, 850 NE 3rd St,
STE 213, Dania, FL 33004