

# 1989 CALIFORNIAN 55 COCKPIT MOTOR YA — CALIFORNIAN



**Builder:** CALIFORNIAN

**Year Built:** 1989

**Model:** Motor Yacht

**Price:** \$239,900 USD

**Location:** United States

**LOA:** 55' (16.76m)

**Beam:** 15.08

**Cruise Speed:** 14 Knots Kts. (16 MPH)

**Max Speed:** 18 Knots Kts. (21 MPH)

Our experienced yacht broker, Andrey Shestakov, will help you choose and buy a yacht that best suits your needs. We have a wide variety of yachts available on our sale's list. We also work in close contact with all the big yacht manufacturers from all over the world.

If you would like to buy a yacht 1989 Californian 55 Cockpit Motor Yacht — CALIFORNIAN or would like help answering any questions concerning purchasing, selling or chartering a yacht, please call +1(954)274-4435

---

# TABLE OF CONTENTS

---

TABLE OF CONTENTS	2
SPECIFICATIONS	3
Overview	3
Basic Information	3
Dimensions	3
Speed, Capacities and Weight	3
Accommodations	3
Engine Information	4
PHOTOS	5
CONTACTS	10
Contact details	10
Telephones	10
Office hours	10
Address	10

---

# SPECIFICATIONS

---

## Overview

---

1989 Californian 55 Cockpit Motor Yacht CLASSIC COCKPIT MOTORYACHT IN EXCELLENT CONDITION, PERFECT TO CRUISE TO CATALINA OR MEXICO, OR MAKE A GREAT LIVEBOARD IN SoCal! MOTIVATED SELLERS, PLEASE BRING OFFERS! LLC OWNED The 55' Californian CPMY has proven to be a timeless American yacht design. Perfect Liveboard or West Coast Cruiser with a three-stateroom and 3 head layout. This classic luxury motor yacht has many technical upgrades and amenities throughout its spacious accommodations. Her lines are elegant and the interior has been tastefully decorated. This Yacht can comfortably sleep 8 adults, and creates the perfect venue to entertain large groups of friends and family. The current owner has spent money and time taking good care of this vessel and it shows. Come see us in our office on Shelter Island, under the Brigantine Restaurant.

## Basic Information

---

**Category:** Motor Yacht

**Model Year:** 1989

**Year Built:** 1989

**Country:** United States

## Dimensions

---

**LOA:** 55' (16.76mm)

**Beam:** 15.08

## Speed, Capacities and Weight

---

**Cruise Speed:** 14 Knots Kts. (16 MPH)

**Max Speed:** 18 Knots Kts. (21 MPH)

**Water Capacity:** 210 Gallons

**Fuel Capacity:** 650 Gal Gallons

## Accommodations

---

**Total Cabins:** 3

**Total Heads:** 3

---

## Engine Information

---

**Engines:** 2

**Manufacturer:** Caterpillar

**Engine Type:** Inboard

**Fuel Type:** Diesel

# PHOTOS

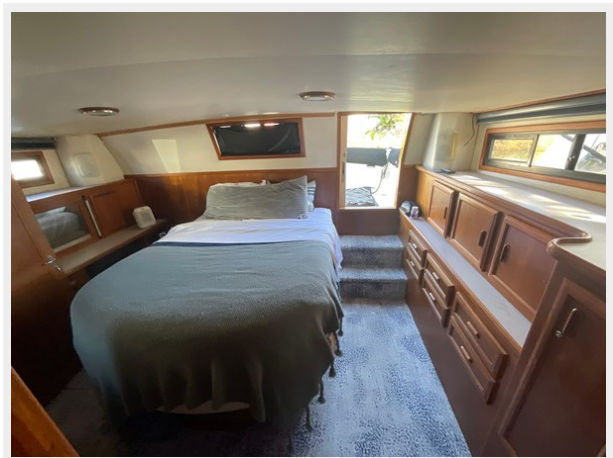
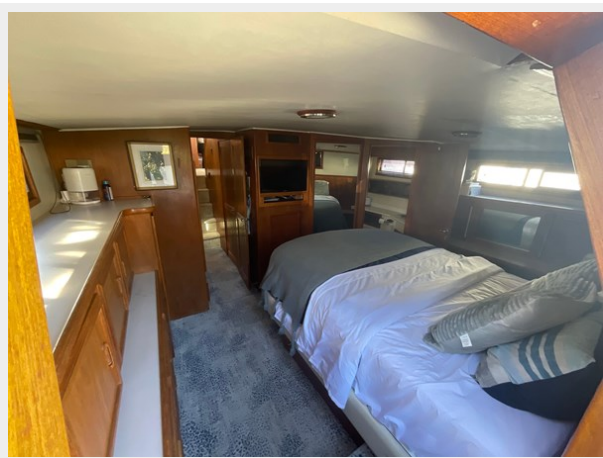
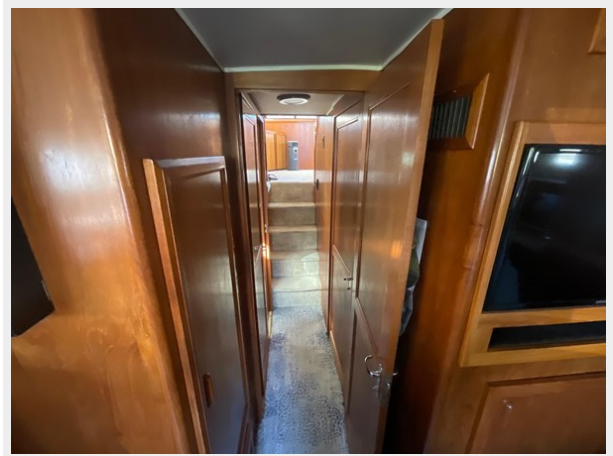




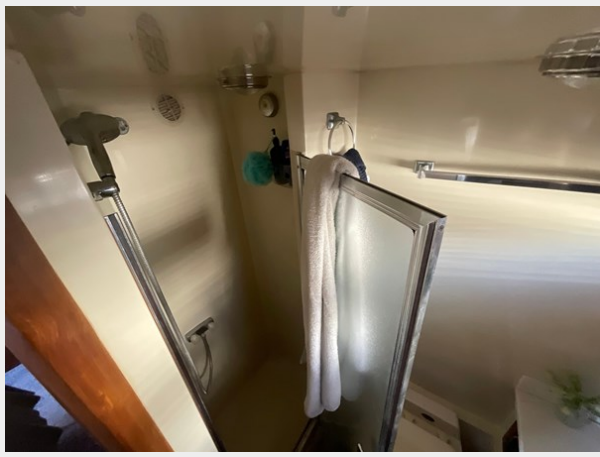












# CONTACTS

---

Andrey Shestakov, leading yacht broker of the sales department of Shestakov Yacht Sales Inc. Shestakov Yacht Sales Inc., the official representative of the Miami/Fort Lauderdale FL headquarters.

## Contact details

---

Email: [andrey@shestakovyachtsales.com](mailto:andrey@shestakovyachtsales.com)

Web: [shestakovyachtsales.com/en/](http://shestakovyachtsales.com/en/)

## Telephones

---

USA: +1(954)274-4435

## Office hours

---

Monday – Saturday: **9:00 - 21:00** EDT

Sunday: **closed**

## Address

---



Harbour Towne Marina, 850 NE 3rd St,  
STE 213, Dania, FL 33004