

1997 CUSTOM SHAW BOATS — SHAW BOAT BUILDERS



Builder: SHAW BOAT BUILDERS

LOA: 55' (16.76mm)

Year Built: 1997

Beam: 30

Model: Catamaran

Price: \$200,000 USD

Location: United States

Our experienced yacht broker, Andrey Shestakov, will help you choose and buy a yacht that best suits your needs 1997 Custom Shaw Boats — SHAW BOAT BUILDERS from our catalogue. Presently, at Shestakov Yacht Sales Inc., we have a wide variety of yachts available on our sale's list. We also work in close contact with all the big yacht manufacturers from all over the world.

If you would like to buy a yacht 1997 Custom Shaw Boats — SHAW BOAT BUILDERS or would like help answering any questions concerning purchasing, selling or chartering a yacht, please call +1(954)274-4435

TABLE OF CONTENTS

TABLE OF CONTENTS	2
SPECIFICATIONS	3
Overview	3
Basic Information	4
Dimensions	4
Speed, Capacities and Weight	4
Accommodations	4
Hull and Deck Information	5
Engine Information	5
PHOTOS	6
CONTACTS	22
Contact details	22
Telephones	22
Office hours	22
Address	22

SPECIFICATIONS

Overview

1997 Custom Shaw Boats - 55 Charter Catamaran THE VERY WELL KNOWN "FOUR WINDS II" MOLOKINI TOUR BOAT IS NOW FOR SALE! KNOWN AS THE "FAMILY FUN BOAT" SHE IS LOCATED IN MAUI, AND IS A CHARTER MACHINE. SHE IS READY FOR NEW OWNERS, AS THE EXISTING OWNERS PREPARE TO RECEIVE THEIR NEW CHARTER BOAT. WELL KNOWN, WELL LOVED, SHE COVERS THE FULL SPECTRUM OF WHAT A HAWAIIAN CHARTER BOAT SHOULD DO WITH: SNORKELING & SNUBA TRIPS WHALE WATCHING SEABOARD WATER SLIDE GLASS BOTTOM VIEWING ROOM BREAKFAST, BBQ LUNCH BEER & WINE MOLOKINI CRATER Journey to Maui's famous Molokini Crater for a once in a lifetime snorkel experience. Snorkel inside a rare volcanic crater with crystal clear water, beautiful coral reefs, and a variety of marine life. SNORKEL TOURS & WHALE WATCH Join us on Maui's best snorkeling tours. Experience either Molokini or Coral Gardens. Snorkel with tropical fish, swim with Green sea turtles, and enjoy seasonal whale watching. FAMILY FIRST Featuring Maui's only glass bottom boat. We offer fun, family-friendly snorkel tours. With all of our kid friendly features and helpful crew, this tour is perfect for everyone. "FOUR WINDS II" is a double decked fiberglass passenger catamaran certified to carry 134 persons (passengers and crew) on a limited coastwise route off the southern and western coasts of Maui, southern coast of Molokai and around Lanai, no more than 20 miles from a harbor of safe refuge. She has twin 420 hp diesel propulsion engines and an A-framed sailing rig with roller furling jib and mainsail. She has slightly raked bows, rounded chines, and a reversed transoms with molded steps and aluminum swim ladders. The hulls are divided into five watertight compartments, and on the port side amidships is a glass bottom for underwater passenger viewing. The helm station is located on the upper deck, forward on centerline, and has full engine controls and instrumentation. The upper deck is covered by a hardtop and has bench seating for seventy passengers. On the main deck, a swing-down swim ladder is mounted on the bow. There is bench seating on the walkways that surround the main deck cabin and passengers are protected by forty-inch-high railings. Two charcoal BBQ grills are mounted on the stern. The main deck cabin area is arranged with service bar forward, two enclosed heads aft, and benches along the sides and centerline aft. Business is not for sale, and the name will be kept by the company. 2 x CAT 3126's main propulsion Generator Northern Lights TF318B 5 KW. Primary rode: (1) Fortress FX 55 with 30 feet of 3/8" chain and 300 feet of 1" nylon three-strand line. Stove: (2) charcoal heated grills mounted on the stern. Refrigeration: Two built-in iceboxes in service bar. Sinks: (2) stainless steel sinks in service bar with hot and cold pressurized water. Mooring bitts and cleats: (5) bronze 12" cleats with closed chocks; (6) aluminum 15" cleats. Lifeline stanchions: 43" lifeline stanchions on aft ends of both decks. Lifelines: (3) courses of lifeline wire Railings: Deck walkways surrounded by solid bulwarks topped with welded pipe railings. Hatches: (6) Freeman watertight aluminum scuttles with good gaskets and dogs. Vents: Engine room vents, in good condition. Ladders: (3) aluminum ladders Commodes: (2) gravity flush commodes. Holding tank: (2) 100-gallon Type III polyethylene tanks. Showers: (2) aft deck shower stations. Pumps: (2) 12 vdc pumps for the

flushing water and showers. Hot water heater: Marine water heaters; Model #17061, 120 vac. Personal flotation device (PFD): (134) Type I USCG approved adult PFDs and (14) Type I USCG approved child PFDs. Type IV throwable: (1) 24" orange life ring with 60 feet of floating line and watertight. Visual distress signaling: (6) day and (6) night handheld signals. Life raft: (4) 22-person life floats and (1) 8-person life float EPIRB: (1) ACR GlobalFix V4 Category I Man overboard recovery: Via forward and aft boarding ladders. Searchlight: (1) handheld. VHF: (1) Standard Horizon Explorer. GPS: (1) Garmin 176C handheld unit. Depth: (1) Standard Horizon DS-150. Radar: (1) Furuno 1621 MK-II. Navigation lights: Meets U.S. Coast Guard requirements. Magnetic compass: Richie 5". Other instruments: (1) Weems and Plath 8" bulkhead clock. Ship's bell: (1) 10" brass bell. Sound signaling: Horn. Portable fire extinguishers: (1) Type BI and (3) Type BII. Fixed firefighting system: (2) Fireboy Model MA20700227 engine room systems. Other firefighting systems: (1) fire pump with two stations. Each station has one section of 1-1/2" fire hose and an all purpose nozzle. Running Rigging: (2) Harken Mark III roller furling units for the jib and mainsail; (3) jammer cleats; Dacron yacht braid between 3/8" and 1/2" for halyard and sheets

Basic Information

Category: Catamaran

Model Year: 1997

Year Built: 1997

Country: United States

Dimensions

LOA: 55' (16.76m)

Beam: 30

Speed, Capacities and Weight

Water Capacity: 500 Gallons

Holding Tank: 200 Gal Gallons

Fuel Capacity: 700 Gal Gallons

Accommodations

Total Heads: 2

Hull and Deck Information

Hull Configuration: Catamaran

Hull Designer: Shaw Boat Builders

Engine Information

Engines: 2

Manufacturer: Caterpillar

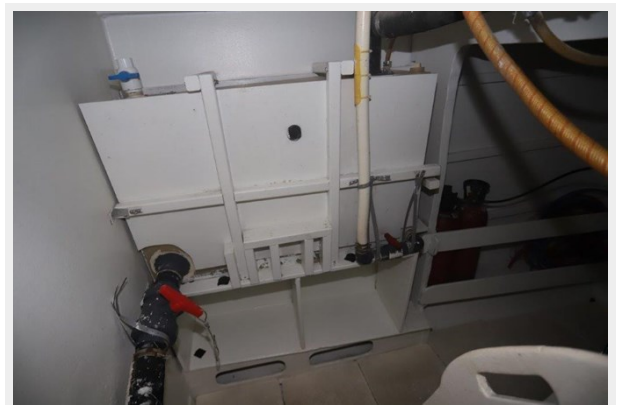
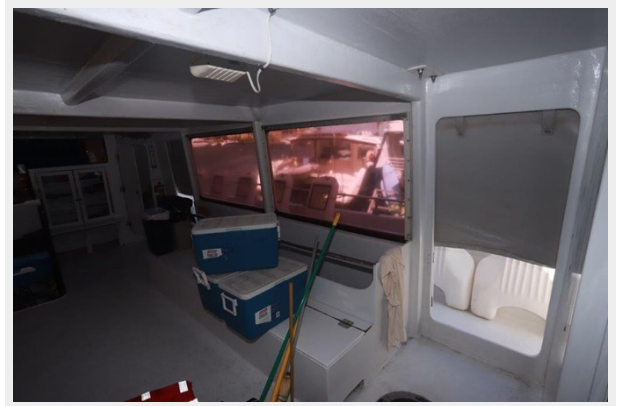
Engine Type: Inboard

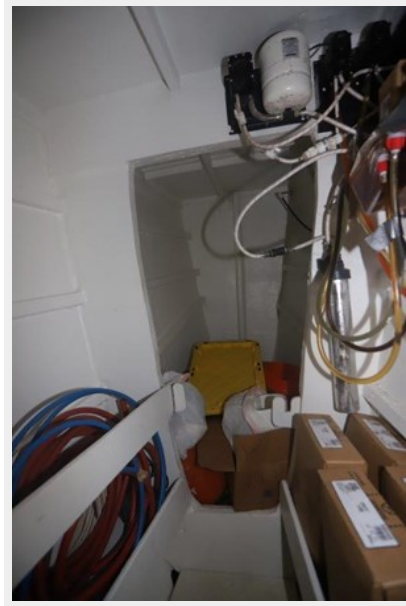
Fuel Type: Diesel

PHOTOS



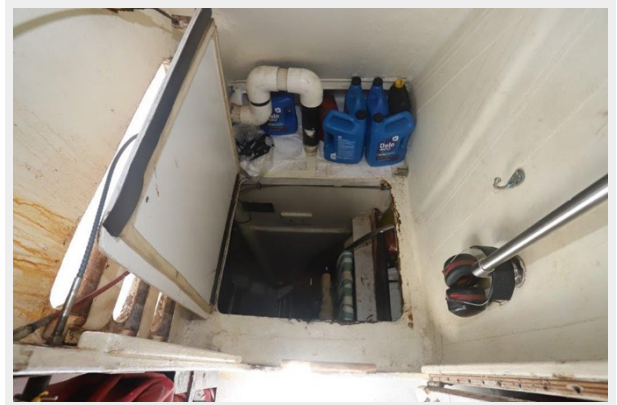


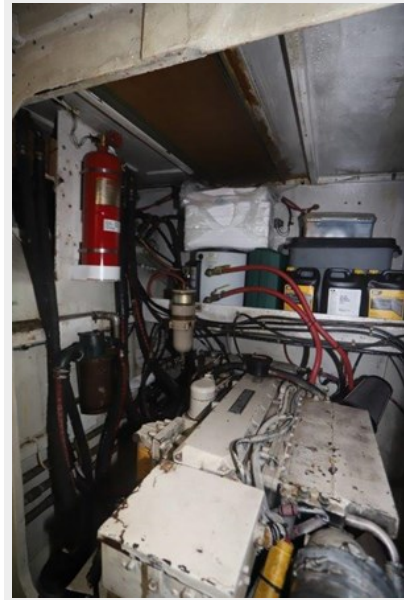
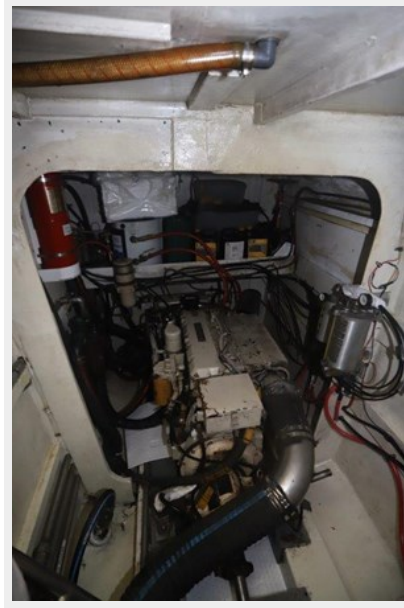




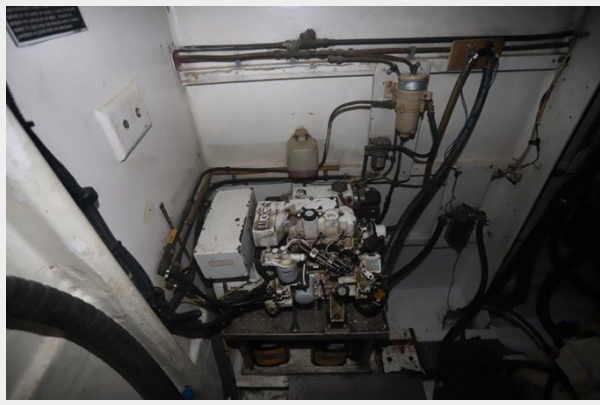






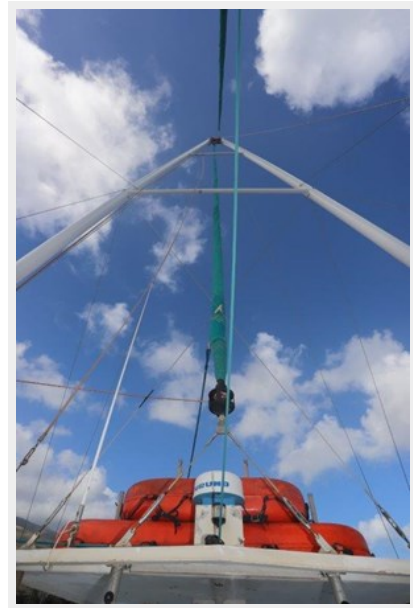
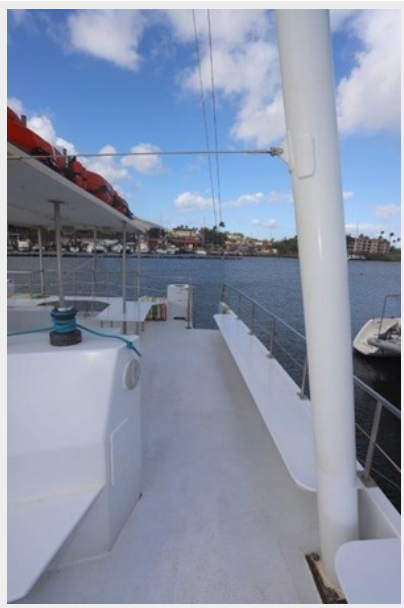


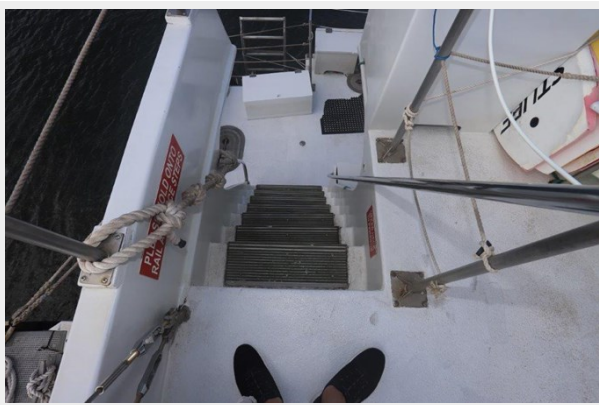


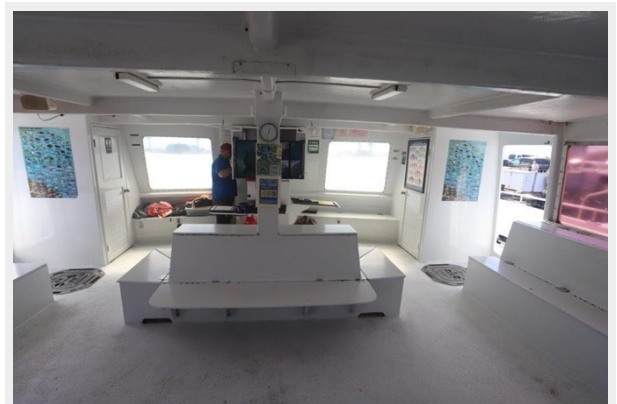
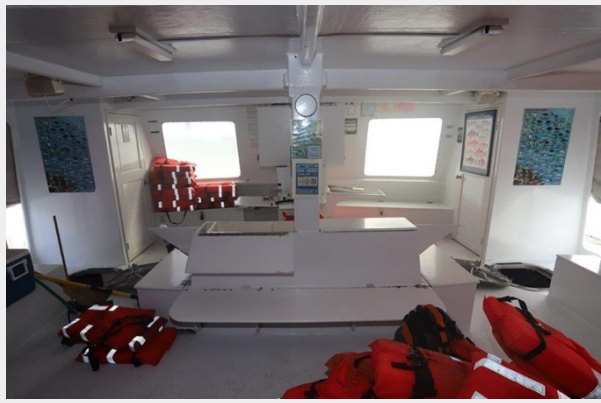
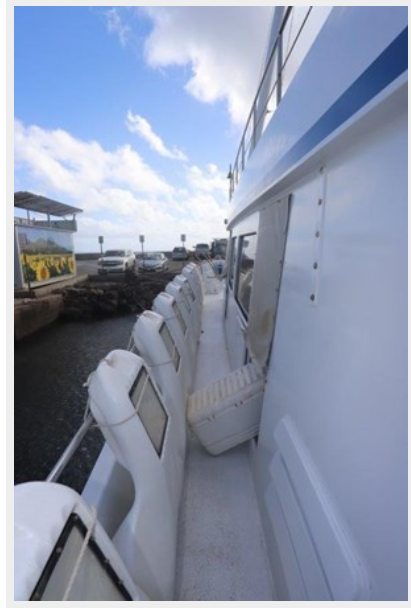


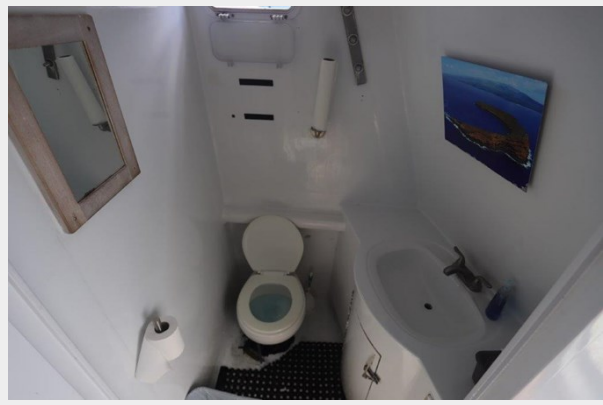












CONTACTS

Andrey Shestakov, leading yacht broker of the sales department of Shestakov Yacht Sales Inc. Shestakov Yacht Sales Inc., the official representative of the Miami/Fort Lauderdale FL headquarters.

Contact details

Email: andrey@shestakovyachtsales.com

Web: shestakovyachtsales.com/en/

Telephones

USA: +1(954)274-4435

Office hours

Monday – Saturday: **9:00 - 21:00** EDT

Sunday: **closed**

Address



Harbour Towne Marina, 850 NE 3rd St,
STE 213, Dania, FL 33004