

1997 CUSTOM SHAW BOATS — SHAW BOAT BUILDERS



Судостроитель:
SHAW BOAT BUILDERS

Год постройки: 1997

Модель: Катамаран

Цена: \$200,000 USD

Местонахождение: United States

Длина общая: 55' (16.76mm)

Ширина: 30

Купить 1997 Custom Shaw Boats — SHAW BOAT BUILDERS а также выбрать подходящую вам яхту из нашего каталога яхт вам поможет опытный яхтенный брокер Андрей Шестаков. На сегодняшний день компания Shestakov Yacht Sales Inc. имеет большое количество яхт в собственном списке продаж, а также тесно сотрудничает со всеми крупными яхтенными производителями по всему миру.

Для того чтобы купить яхту 1997 Custom Shaw Boats — SHAW BOAT BUILDERS а также проконсультироваться по любому вопросу связанному с покупкой, продажей, чартером яхт позвоните по телефону **+7(918)465-66-44**.

ОГЛАВЛЕНИЕ

ОГЛАВЛЕНИЕ	2
ХАРАКТЕРИСТИКИ	3
Обзор	3
Основная информация	4
Размеры	4
Скорость, вместимость и масса	4
Размещение	4
Корпус и палуба	5
Информация о двигателе	5
ФОТОГРАФИИ	6
КОНТАКТЫ	22
Контактная информация	22
Телефоны	22
Время работы	22
Адрес	22

ХАРАКТЕРИСТИКИ

Обзор

1997 Custom Shaw Boats - 55 Charter Catamaran THE VERY WELL KNOWN "FOUR WINDS II" MOLOKINI TOUR BOAT IS NOW FOR SALE! KNOWN AS THE "FAMILY FUN BOAT" SHE IS LOCATED IN MAUI, AND IS A CHARTER MACHINE. SHE IS READY FOR NEW OWNERS, AS THE EXISTING OWNERS PREPARE TO RECEIVE THEIR NEW CHARTER BOAT. WELL KNOWN, WELL LOVED, SHE COVERS THE FULL SPECTRUM OF WHAT A HAWAIIAN CHARTER BOAT SHOULD DO WITH: SNORKELING & SNUBA TRIPS WHALE WATCHING SEABOARD WATER SLIDE GLASS BOTTOM VIEWING ROOM BREAKFAST, BBQ LUNCH BEER & WINE MOLOKINI CRATER Journey to Maui's famous Molokini Crater for a once in a lifetime snorkel experience. Snorkel inside a rare volcanic crater with crystal clear water, beautiful coral reefs. and a variety of marine life. SNORKEL TOURS & WHALE WATCH Join us on Maui's best snorkeling tours. Experience either Molokini or Coral Gardens. Snorkel with tropical fish, swim with Green sea turtles, and enjoy seasonal whale watching. FAMILY FIRST Featuring Maui's only glass bottom boat. We offer fun, family-friendly snorkel tours. With all of our kid friendly features and helpful crew, this tour is perfect for everyone. "FOUR WINDS II" is a double decked fiberglass passenger catamaran certified to carry 134 persons (passengers and crew) on a limited coastwise route off the southern and western coasts of Maui, southern coast of Molokai and around Lanai, no more than 20 miles from a harbor of safe refuge. She has twin 420 hp diesel propulsion engines and an A-framed sailing rig with roller furling jib and mainsail. She has slightly raked bows, rounded chines, and a reversed transoms with molded steps and aluminum swim ladders. The hulls are divided into five watertight compartments, and on the port side amidships is a glass bottom for underwater passenger viewing. The helm station is located on the upper deck, forward on centerline, and has full engine controls and instrumentation. The upper deck is covered by a hardtop and has bench seating for seventy passengers. On the main deck, a swing-down swim ladder is mounted on the bow. There is bench seating on the walkways that surround the main deck cabin and passengers are protected by forty-inch-high railings. Two charcoal BBQ grills are mounted on the stern. The main deck cabin area is arranged with service bar forward, two enclosed heads aft, and benches along the sides and centerline aft. Business is not for sale, and the name will be kept by the company. 2 x CAT 3126's main propulsion Generator Northern Lights TF318B 5 KW. Primary rode: (1) Fortress FX 55 with 30 feet of 3/8" chain and 300 feet of 1" nylon three-strand line. Stove: (2) charcoal heated grills mounted on the stern. Refrigeration: Two built-in iceboxes in service bar. Sinks: (2) stainless steel sinks in service bar with hot and cold pressurized water. Mooring bitts and cleats: (5) bronze 12" cleats with closed chocks; (6) aluminum 15" cleats. Lifeline stanchions: 43" lifeline stanchions on aft ends of both decks. Lifelines: (3) courses of lifeline wire Railings: Deck walkways surrounded by solid bulwarks topped with welded pipe railings. Hatches: (6) Freeman watertight aluminum scuttles with good gaskets and dogs. Vents: Engine room vents, in good condition. Ladders: (3) aluminum ladders Commodes: (2) gravity flush commodes. Holding tank: (2) 100-gallon Type III polyethylene tanks. Showers: (2) aft deck shower stations. Pumps: (2) 12 vdc pumps for the

flushing water and showers. Hot water heater: Marine water heaters; Model #17061, 120 vac. Personal flotation device (PFD): (134) Type I USCG approved adult PFDs and (14) Type I USCG approved child PFDs. Type IV throwable: (1) 24" orange life ring with 60 feet of floating line and watertight. Visual distress signaling: (6) day and (6) night handheld signals. Life raft: (4) 22-person life floats and (1) 8-person life float EPIRB: (1) ACR GlobalFix V4 Category I Man overboard recovery: Via forward and aft boarding ladders. Searchlight: (1) handheld. VHF: (1) Standard Horizon Explorer. GPS: (1) Garmin 176C handheld unit. Depth: (1) Standard Horizon DS-150. Radar: (1) Furuno 1621 MK-II. Navigation lights: Meets U.S. Coast Guard requirements. Magnetic compass: Richie 5". Other instruments: (1) Weems and Plath 8" bulkhead clock. Ship's bell: (1) 10" brass bell. Sound signaling: Horn. Portable fire extinguishers: (1) Type BI and (3) Type BII. Fixed firefighting system: (2) Fireboy Model MA20700227 engine room systems. Other firefighting systems: (1) fire pump with two stations. Each station has one section of 1-1/2" fire hose and an all purpose nozzle. Running Rigging: (2) Harken Mark III roller furling units for the jib and mainsail; (3) jammer cleats; Dacron yacht braid between 3/8" and 1/2" for halyard and sheets

Основная информация

Тип судна: Катамаран

Модельный год: 1997

Год постройки: 1997

Страна: United States

Размеры

Длина общая: 55' (16.76m)

Ширина: 30

Скорость, вместимость и масса

Вместимость воды: 500 Gallons

Вместимость сточного бака: 200 Gal
Gallons

Объем топливного бака: 700 Gal Gallons

Размещение

Всего ком. состава: 2

Корпус и палуба

Комплектация корпуса: Катамаран

Дизайнер корпуса: Shaw Boat Builders

Информация о двигателе

Двигатели: 2

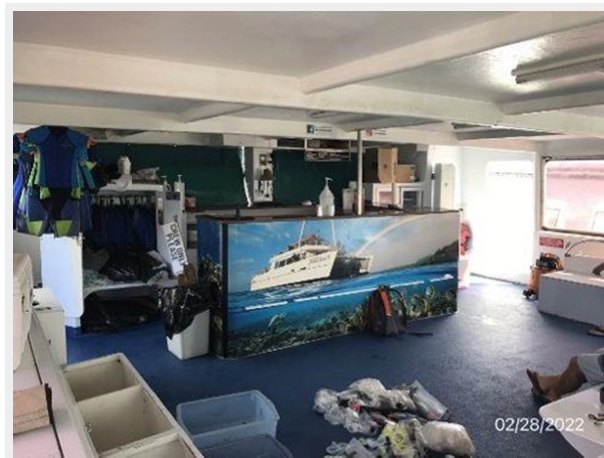
Производитель: Caterpillar

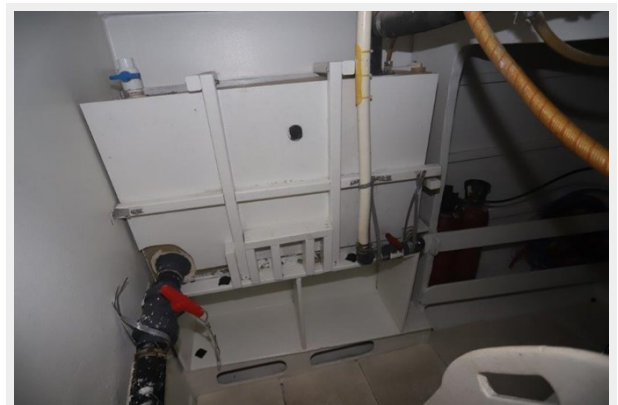
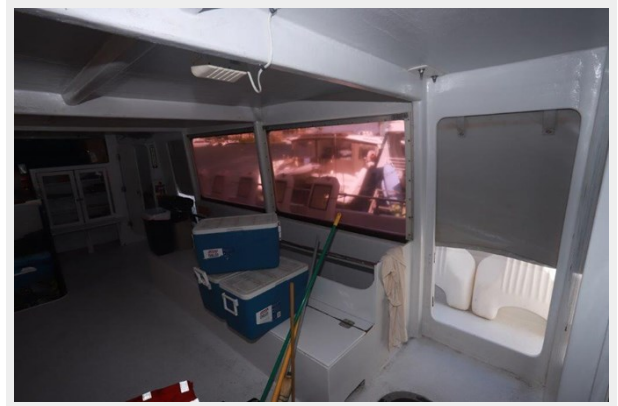
Тип двигателя: Inboard

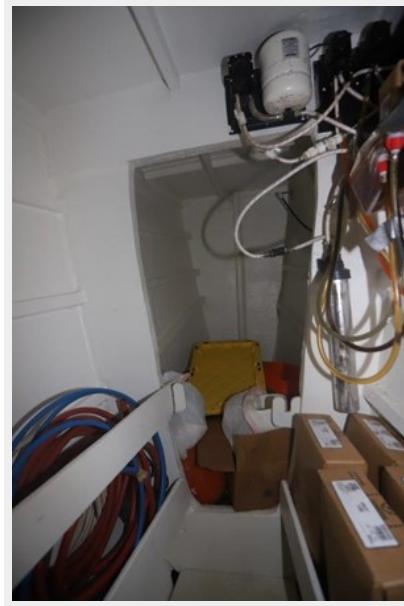
Тип топлива: Diesel

ФОТОГРАФИИ















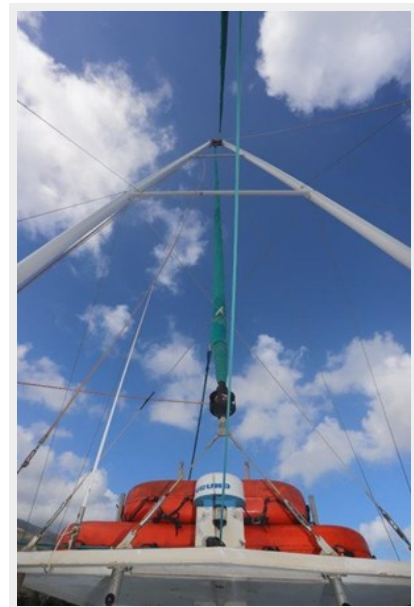
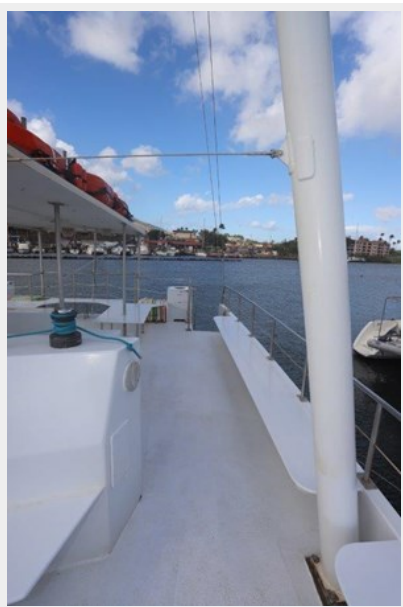


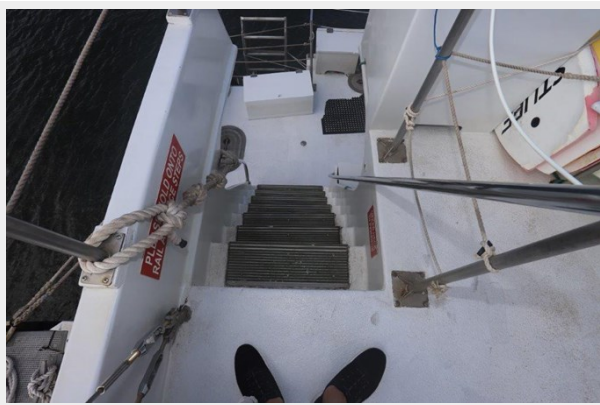


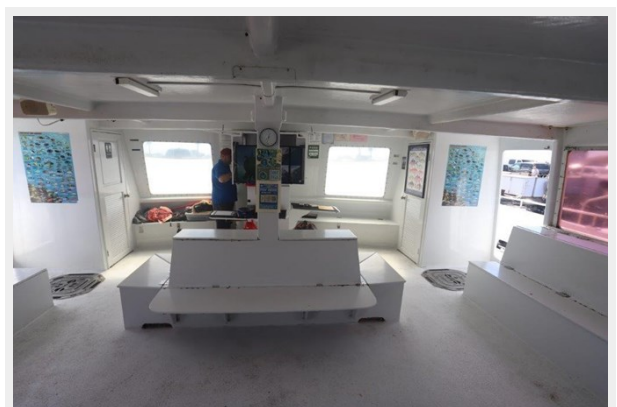


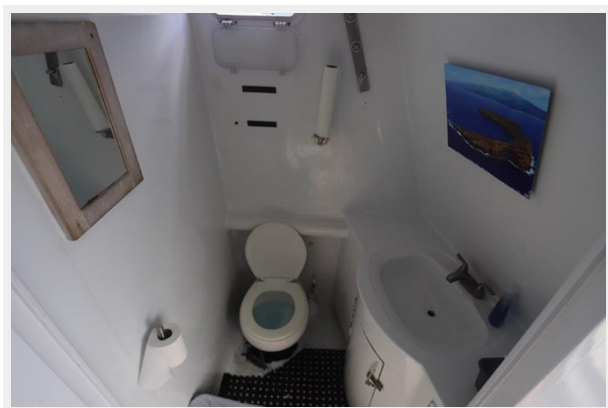












КОНТАКТЫ

Андрей Шестаков (Andrey Shestakov) – ведущий яхтенный брокер отдела продаж яхт и судов компании Shestakov Yacht Sales Inc. Официальный представитель Shestakov Yacht Sales Inc. для русскоговорящих клиентов в центральном офисе компании в Майами/Форт Лодердейл/Флорида/США.

Контактная информация

Email: andrey@shestakovyachtsales.com

Web: shestakovyachtsales.com

Телефоны

Краснодарский край: **+7(918)465-66-44**

США, Майами, Флорида: **+1(954)274-4435**

Время работы

Понедельник – Суббота: **9:00 - 21:00**
EDT

Воскресенье: **Закрето**

Адрес



Harbour Towne Marina, 850 NE 3rd St,
STE 213, Dania, FL 33004