

DAWN 40 — JERSEY



Builder: JERSEY

Year Built: 1985

Model: Sport Fisherman

Price: \$126,500 USD

Location: United States

LOA: 40' (12.19m)

Beam: 14.5

Max Draft: 3' 6" (1.07m)

Cruise Speed: 17 Knots Kts. (20 MPH)

Max Speed: 23 Knots Kts. (26 MPH)

Our experienced yacht broker, Andrey Shestakov, will help you choose and buy a yacht that best suits your needs **Dawn 40 — JERSEY** from our catalogue. Presently, at Shestakov Yacht Sales Inc., we have a wide variety of yachts available on our sale's list. We also work in close contact with all the big yacht manufacturers from all over the world.

If you would like to buy a yacht **Dawn 40 — JERSEY** or would like help answering any questions concerning purchasing, selling or chartering a yacht, please call **+1(954)274-4435**

TABLE OF CONTENTS

TABLE OF CONTENTS	2
SPECIFICATIONS	6
Overview	6
Basic Information	6
Dimensions	6
Speed, Capacities and Weight	6
Accommodations	6
Hull and Deck Information	6
Engine Information	7
PHOTOS	8
2	8
3	8
4	8
5	8
6	8
7	8
8	9
9	9
10	9
11	9
12	9
13	9
14	10
15	10
16	10
17	10
18	10
19	10

20	11
21	11
22	11
23	11
24	11
25	11
26	12
27	12
28	12
29	12
30	12
31	12
32	13
33	13
34	13
35	13
36	13
37	13
38	14
39	14
40	14
41	14
42	14
43	14
44	15
45	15
46	15
47	15
48	15

49	15
50	16
51	16
52	16
53	16
54	16
55	16
56	17
57	17
58	17
59	17
60	17
61	17
62	18
63	18
64	18
65	18
66	18
67	18
68	19
69	19
70	19
71	19
72	19
73	19
74	20
75	20
76	20
77	20

78	20
79	20
80	21
81	21
82	21
83	21
84	21
85	21
86	22
87	22
88	22
89	22
90	22
91	22
92	23
93	23
94	23
CONTACTS	24
Contact details	24
Telephones	24
Office hours	24
Address	24

SPECIFICATIONS

Overview

This 1985 Jersey Dawn 40 Sport Fish is a one stateroom, 1 head layout. She features a large cockpit with lots of room for outdoor entertaining for family and friends, as well as a spacious flybridge with Garmin electronics. The interior is very roomy. She is well equipped for long-distance cruising and does equally well as a live-aboard. Also includes a tender with outboard.

Basic Information

Category: Sport Fisherman

Model Year: 1985

Year Built: 1985

Country: United States

Dimensions

LOA: 40' (12.19mm)

Beam: 14.5

Max Draft: 3' 6" (1.07mm)

Speed, Capacities and Weight

Cruise Speed: 17 Knots Kts. (20 MPH)

Max Speed: 23 Knots Kts. (26 MPH)

Water Capacity: 50 Gallons

Holding Tank: 35 Gal Gallons

Fuel Capacity: 400 Gal Gallons

Accommodations

Total Cabins: 1

Hull and Deck Information

Hull Material: Fiberglass

Engine Information

Engines: 2

Manufacturer: Volvo Penta

Engine Type: Inboard

Fuel Type: Diesel

PHOTOS

2



3



4



5



6



7



8



9



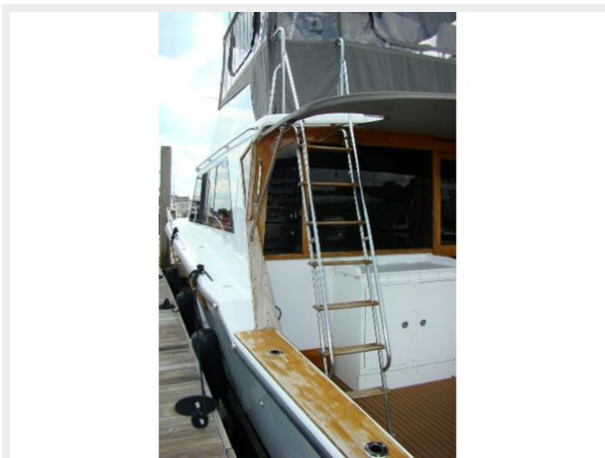
10



11



12



13



14



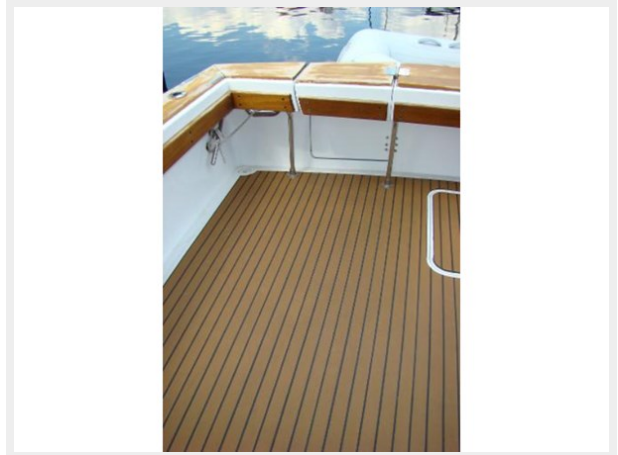
15



16



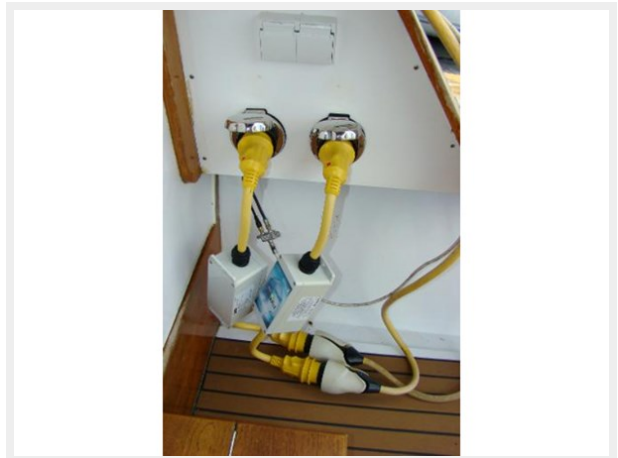
17



18



19



20



21



22



23



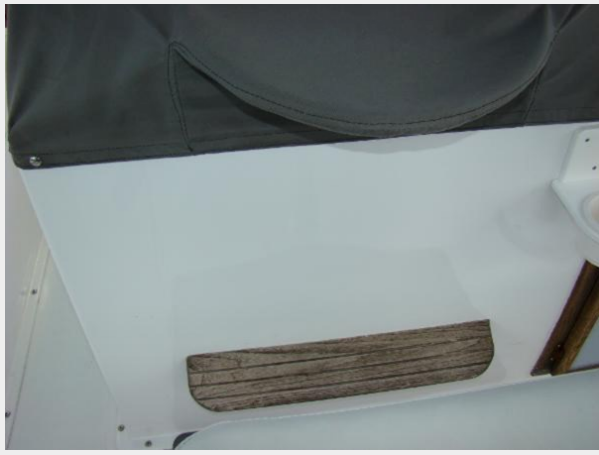
24



25



26



27



28



29



30



31



32



33



34



35



36



37



38



39



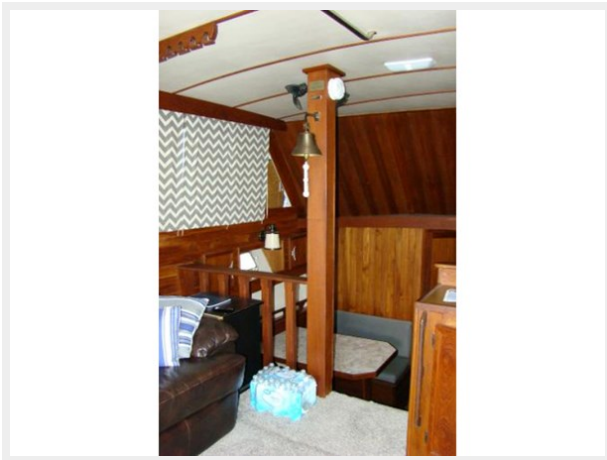
40



41



42



43



44



45



46



47



48



49



50



51



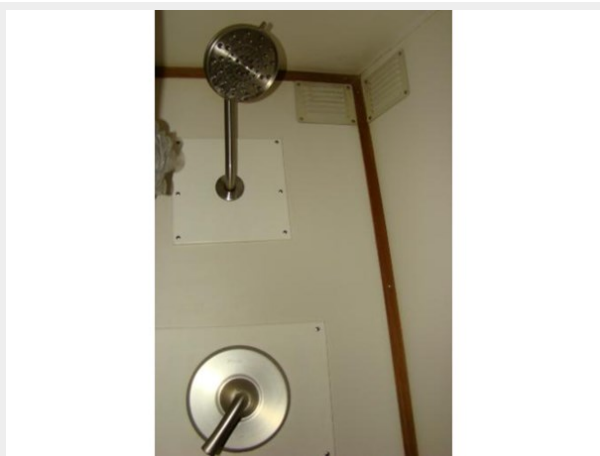
52



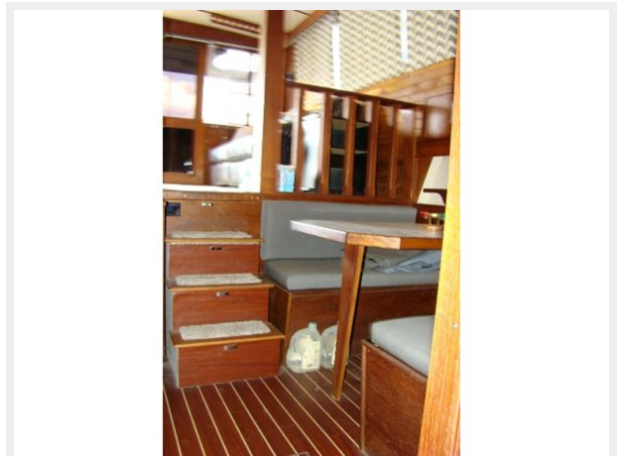
53



54



55



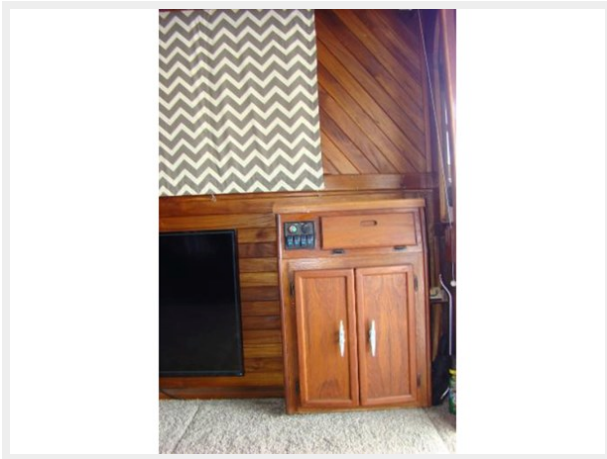
56



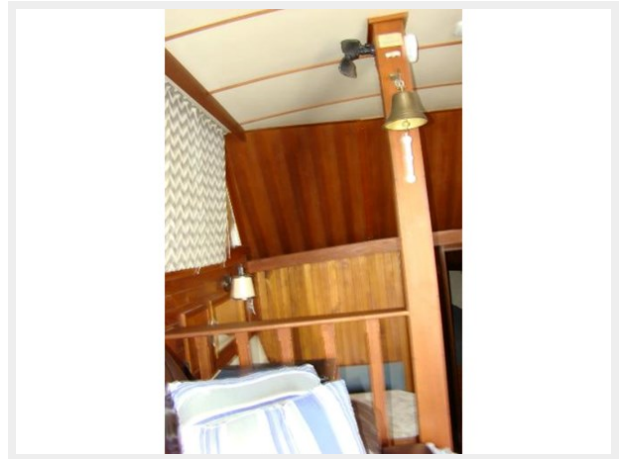
57



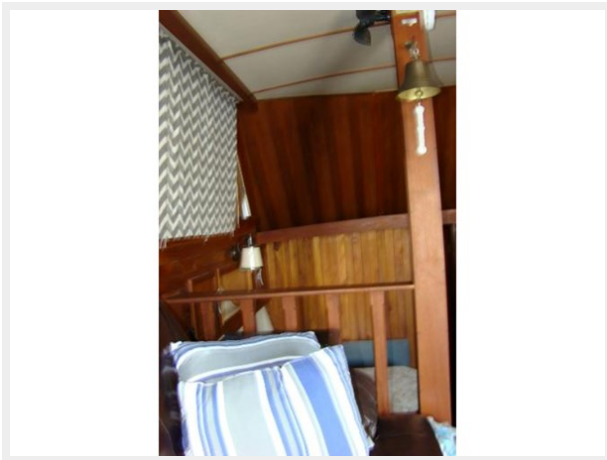
58



59



60



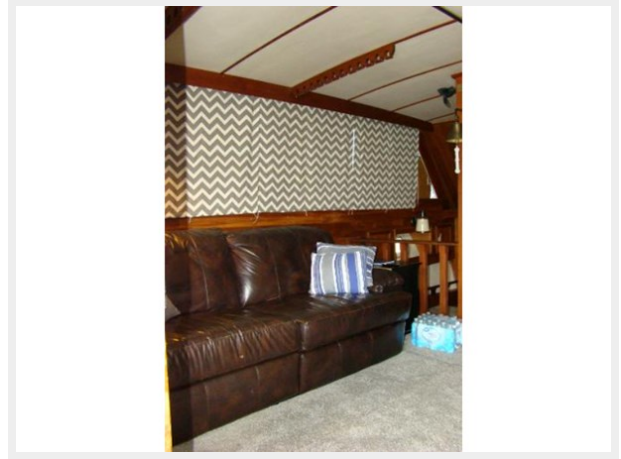
61



62



63



64



65



66



67



68



69



70



71



72



73



74



75



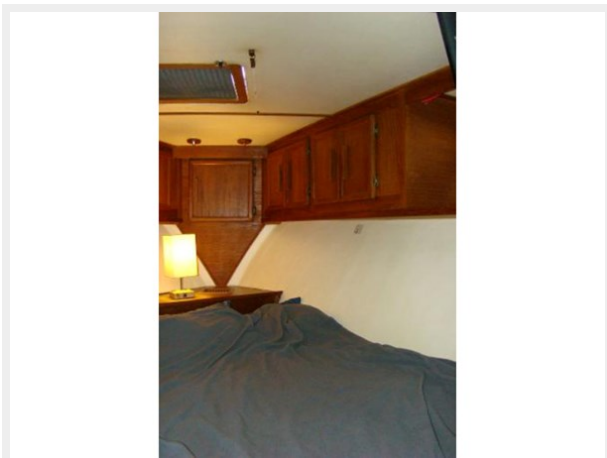
76



77



78



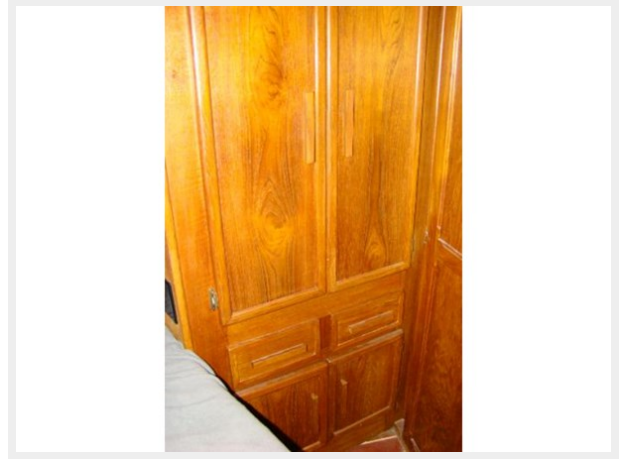
79



80



81



82



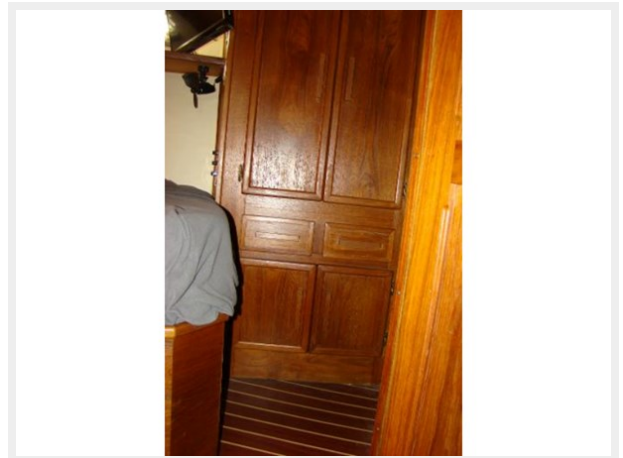
83



84



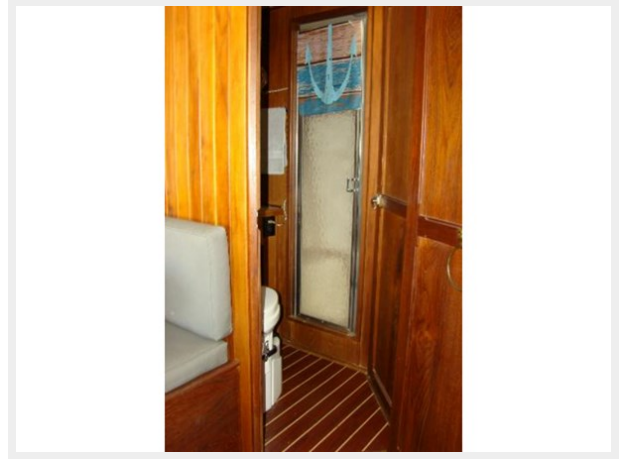
85



86



87



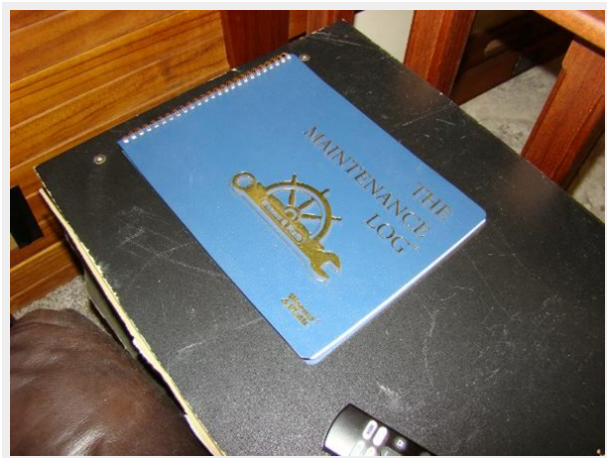
88



89



90



91



92



93



94



CONTACTS

Andrey Shestakov, leading yacht broker of the sales department of Shestakov Yacht Sales Inc. Shestakov Yacht Sales Inc., the official representative of the Miami/Fort Lauderdale FL headquarters.

Contact details

Email: andrey@shestakovyachtsales.com

Web: shestakovyachtsales.com/en/

Telephones

USA: +1(954)274-4435

Office hours

Monday – Saturday: **9:00 - 21:00** EDT

Sunday: **closed**

Address



Harbour Towne Marina, 850 NE 3rd St,
STE 213, Dania, FL 33004