

2023 MCCONAGHY MC82 — MCCONAGHY



Судостроитель: MCCONAGHY

Год постройки: 2023

Модель: Катамаран

Цена: \$6,990,000 USD

Местонахождение: Australia

Длина общая: 78' (23.77m)

Ширина: 33.41

Макс. осадка: 3' 6" (1.07m)

Крейс. скорость: 9 Knots Kts. (10 MPH)

Макс. скорость: 15 Knots Kts. (17 MPH)

Купить 2023 McConaghy MC82 — MCCONAGHY а также выбрать подходящую вам яхту из нашего каталога яхт вам поможет опытный яхтенный брокер Андрей Шестаков. На сегодняшний день компания Shestakov Yacht Sales Inc. имеет большое количество яхт в собственном списке продаж, а также тесно сотрудничает со всеми крупными яхтенными производителями по всему миру.

Для того чтобы купить яхту 2023 McConaghy MC82 — MCCONAGHY а также проконсультироваться по любому вопросу связанному с покупкой, продажей, чартером яхт позвоните по телефону **+7(918)465-66-44**.

ОГЛАВЛЕНИЕ

ОГЛАВЛЕНИЕ	2
ХАРАКТЕРИСТИКИ	3
Обзор	3
Основная информация	4
Размеры	5
Скорость, вместимость и масса	5
Размещение	5
Корпус и палуба	5
Информация о двигателе	5
ФОТОГРАФИИ	6
КОНТАКТЫ	11
Контактная информация	11
Телефоны	11
Время работы	11
Адрес	11

ХАРАКТЕРИСТИКИ

Обзор

2023 McConaghy MC82 Overview Introducing the MC82p, a super high-end luxury catamaran that redefines opulence on the water. This masterpiece maximizes internal volume and features a meticulously designed layout that surpasses traditional yacht interiors. The MC82p is an appealing all-rounder: a confident long-range cruiser, family yacht, and coastal weekender, as well as offering a desirable platform for commercial charter.

Main Deck: Saloon Lounge: A vast, elegant space perfect for relaxation and entertainment, featuring a dining area and an open-plan galley. Tempered Safety Glass Sliding Doors: Between the saloon and aft deck. Aft Deck: Offers spacious seating with sofas and an alfresco dining area, ideal for enjoying meals with a view. Exterior Lounge: Located forward of the superstructure, providing a cozy outdoor retreat. Staircase to Flybridge: Clear carbon off-center stair and handrail with illuminated steps on the starboard aft side deck. Forward Facing Settee and Table: For additional seating. Day Bed: Located on the starboard side. Bar Area: Features a single large stainless sink, cabinetry to accommodate six bottles and 12 glasses, a 26-gallon integrated rubbish bin, a drawer fridge, and an ice maker. Lighting: Exterior downlights, discreet lighting for transom steps, and recessed courtesy lighting at floor level. Other Features: Transom recharging point for electric tender, clear carbon swim ladder, outdoor aft deck rain shower.

Flybridge: Informal Dining Area: An additional space for dining, complemented by freestanding lounge furniture. Sun Loungers: Positioned aft to capitalize on the elevated, uninterrupted views. Sheltered Design: The flybridge is protected by a fixed bimini. Lounge Area: L-shaped settee with storage, BBQ grill with storage for additional propane bottles. Dining Table: Accommodates up to 10 guests. Bar Area: Features twin stainless steel sinks, drawer fridge, ice maker, and built-in dishwasher. Includes a 26-gallon integrated rubbish bin and flybridge stairs. Hard Bimini: Equipped with approximately 355 square feet, or 7.2 kW of solar panel layout.

Accommodation: Guest Cabins: Four luxurious seaward-facing double cabins. Crew Cabins: Two additional cabins designed for crew comfort and efficiency, one double and one single cabin. Bathrooms: Include large showers with quality fittings, Corian soles, sinks with hot/cold mixer taps, electric fresh water toilets, and mirrored cabinets.

Port Side Galley & the "Island" Appliances: Twin door freezer (WSE6870SA or similar) 2 x LG Twin door fridge / freezer (WSE6870SA or similar) Miele 4-unit induction hob (Miele AEG IPE64551FB or similar) Miele 900mm oven Miele 600mm oven Miele microwave oven Miele dishwasher Under counter fridge at the Tea Station in Saloon (Vitrifrigo DW180.RFX or DTX or Isotherm) Miele wine cooler (KWT 6322 UG) Counter Tops: Expansive Corian counter tops. Sinks: Two large double bowl stainless steel sinks with rounded corners and hot/cold mixer tap. Storage: Under bench tops, cupboards, and soft-close drawers. Lighting: Recessed courtesy lighting at floor level around the island. Power Outlets: 110/230V AC and USB sockets.

Performance: Engines: Equipped with twin John Deere 6068AFM85 M3 300hp engines. Speed: Reaches a top speed of 15 knots and cruises comfortably at 9 knots. Range: With an 8,000-liter (2,113-gallon) fuel capacity, the yacht offers a maximum range of 2,000 nautical miles at a cruising speed of 9 knots.

Additional Features: Tender: Carries a 16-foot tender on a hydraulic aft platform, which, when deployed, creates a spacious swim platform or provides

additional deck space. Solar Power Generation: Equipped with Sunpower solar panels, totaling 7.2 kW, with enough solar panels to recharge house batteries during construction. Synthetic Teak Decking: Flexiteak decks throughout for a luxurious and durable finish. Hull Colors: Black antifoul, red boot top, white hulls, grey flybridge, and black features. Underwater Lights: Includes six underwater lights for enhanced aesthetic appeal during nighttime. Flood Lights: Forward-facing flood lights for enhanced visibility and safety. Wireless Outdoor Speakers: Four wireless outdoor speakers for the flybridge. Upgraded Systems: Lithium Ion Batteries: Twelve (12) x 180Ah Lithium Ion Batteries with enough space in the battery room to accommodate 100 kWh of batteries. Inverters and Chargers: Two (2) x Victron 24/4000w inverter/chargers. Oil Change System: Two (2) x oil change systems. Chain Counter: Located on the flybridge. Horn Speaker: One (1) x waterproof white horn speaker. Searchlight: One (1) x ACR RCL-100 LED searchlight. WiFi Network: Includes a WiFi network consolidator, booster, and 4G antenna. Starlink: HD Marine. Satellite: Iridium Go executive. Entertainment Package: One (1) x 55" TV with electric lift at aft deck, One (1) x 70" TV with electric rotate lift in saloon, Fusion speakers x (4). Teak Decking: Flexiteak Teak decking approximately 125 square meters. Antifoul: For enhanced underwater protection. Rope Cutters: Two (2) x rope cutters. Blinds: For all windows and hatches. Safety Equipment: Comprehensive safety equipment package. Autopilot: Garmin autopilot. Multifunctional Displays: Two (2) x Garmin 16" displays on the flybridge helm. Radar: Garmin open array 4ft 4kW HD color radar. Docking Cameras: Two (2) x Raymarine day/night docking cameras at the cockpit ceiling, aft-facing. Engine Room Cameras: Two (2) x Raymarine ER cameras. Navigation Package: Garmin echo sounder, GPS Garmin, VHF (with antenna) Garmin. Generator: One (1) x Onan 27kw generator. Air Conditioning: 228K BTU aircon package with 12 air handlers. Bow Thrusters: Two (1) x Side Power DC retractable SEP150/215T-24 and (1) Side Power hydraulic retractable. Hydraulic Tender-Lift: Swim platform with a payload capacity of 1,500 kg. Water Makers: Two (2) x Sea Recovery water makers, 200 LPH each. Fuel Polish System: Includes a fuel transfer pump. Specifications: LOA: 78.4 feet (23.9 meters) Max Beam: 33.5 feet (10.22 meters) Draft: 3.6 feet (1.1 meters) Interior Headroom: 6.6 feet to 7.5 feet (2.0 meters to 2.3 meters) Naval Architect: Kerr Yacht Design Interior Designer: M2Atelier Standard Power: 2 x John Deere 6068AFM85 M3 300hp engines Fuel Tank Capacity: 8,000 liters (2,113 gallons) Fresh Water Capacity: 1,500 liters (396 gallons) Construction: E-glass/epoxy/foam sandwich with carbon fiber structural elements The MC82p catamaran is the epitome of luxury and performance, offering unparalleled comfort and customization to meet the highest expectations of discerning yacht owners. Experience the ultimate in yachting with the MC82p.

Основная информация

Тип судна: Катамаран

Модельный год: 2023

Год постройки: 2023

Страна: Australia

Размеры

Длина общая: 78' (23.77mm)

Ширина: 33.41

Макс. осадка: 3' 6" (1.07mm)

Скорость, вместимость и масса

Крейс. скорость: 9 Knots Kts. (10 MPH)

Макс. скорость: 15 Knots Kts. (17 MPH)

Вместимость воды: 396 Gallons

Объем топливного бака: 2113 Gal
Gallons

Размещение

Всего кают: 6

Корпус и палуба

Дизайнер экстерьера: Kerr Yacht Design Дизайнер интерьера: M2Atelier

Информация о двигателе

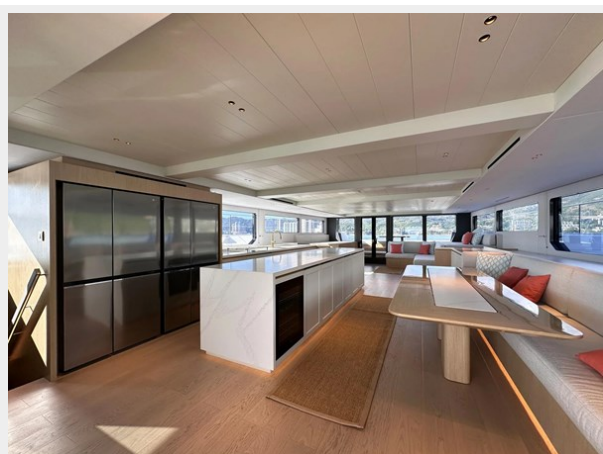
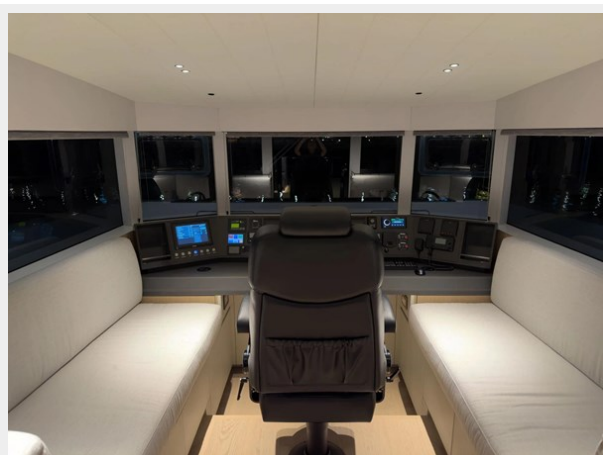
Двигатели: 2

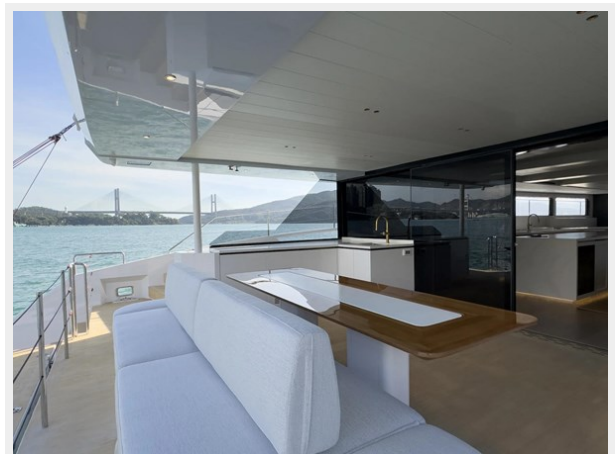
Производитель: John Deere

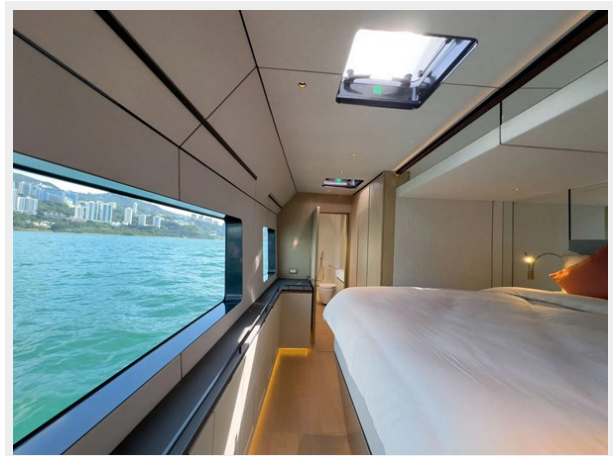
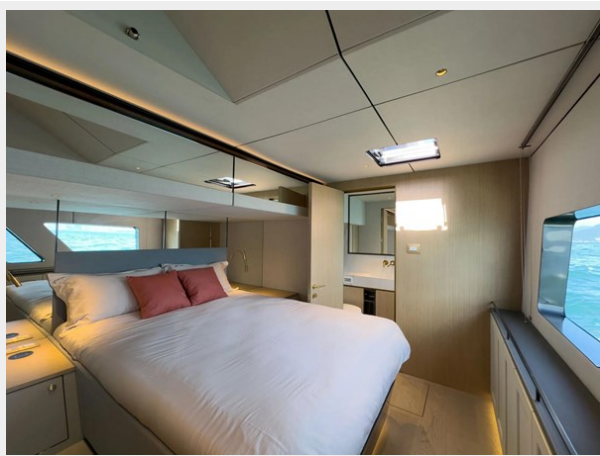
Тип двигателя: Inboard

Тип топлива: Diesel

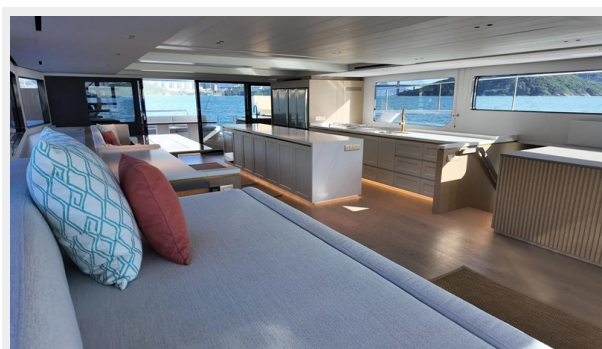
ФОТОГРАФИИ











КОНТАКТЫ

Андрей Шестаков (Andrey Shestakov) – ведущий яхтенный брокер отдела продаж яхт и судов компании Shestakov Yacht Sales Inc. Официальный представитель Shestakov Yacht Sales Inc. для русскоговорящих клиентов в центральном офисе компании в Майами/Форт Лодердейл/Флорида/США.

Контактная информация

Email: andrey@shestakovyachtsales.com

Web: shestakovyachtsales.com

Телефоны

Краснодарский край: **+7(918)465-66-44**

США, Майами, Флорида: **+1(954)274-4435**

Время работы

Понедельник – Суббота: **9:00 - 21:00**
EDT

Воскресенье: **Закрито**

Адрес



Harbour Towne Marina, 850 NE 3rd St,
STE 213, Dania, FL 33004