

## TIME OUT — SEA RAY



**Builder:** SEA RAY

**Year Built:** 2018

**Model:** Flybridge

**Price:** \$689,900 USD

**Location:** United States

**LOA:** 43' 6" (13.26mm)

**Beam:** 13.5

**Max Draft:** 3' 9" (1.14mm)

**Cruise Speed:** 22 Knots Kts. (25 MPH)

**Max Speed:** 28 Knots Kts. (32 MPH)

Our experienced yacht broker, Andrey Shestakov, will help you choose and buy a yacht that best suits your needs **Time Out — SEA RAY** from our catalogue. Presently, at Shestakov Yacht Sales Inc., we have a wide variety of yachts available on our sale's list. We also work in close contact with all the big yacht manufacturers from all over the world.

If you would like to buy a yacht **Time Out — SEA RAY** or would like help answering any questions concerning purchasing, selling or chartering a yacht, please call **+1(954)274-4435**

---

# TABLE OF CONTENTS

---

TABLE OF CONTENTS	2
SPECIFICATIONS	3
Overview	3
Basic Information	3
Dimensions	3
Speed, Capacities and Weight	3
Accommodations	4
Hull and Deck Information	4
Engine Information	4
PHOTOS	5
CONTACTS	12
Contact details	12
Telephones	12
Office hours	12
Address	12

---

# SPECIFICATIONS

---

## Overview

---

Diesel V-drive propulsion with optional joystick docking control Social daytime, intimate nighttime layout Standard Raymarine® Axiom™ 12" chartplotter with radar at upper & lower helms Audio system with Wireless Bluetooth™ and media inputs Superior sun coverage w/optional bimini top & foredeck shade Master stateroom with closet system, Second fully Equipped Head Transom Gourmet Center Inflatible Dinghy w OB Included LLC Owned

Has City of Newport Beach Charter License

## Basic Information

---

**Category:** Flybridge

**Sub Category:** Flybridge

**Model Year:** 2018

**Year Built:** 2018

**Country:** United States

## Dimensions

---

**LOA:** 43' 6" (13.26mm)

**LWL:** 40' (12.19mm)

**Beam:** 13.5

**Max Draft:** 3' 9" (1.14mm)

## Speed, Capacities and Weight

---

**Cruise Speed:** 22 Knots Kts. (25 MPH)

**Max Speed:** 28 Knots Kts. (32 MPH)

**Water Capacity:** 100 Gallons

**Holding Tank:** 42 Gal Gallons

**Fuel Capacity:** 344 Gal Gallons

---

## Accommodations

---

**Total Cabins:** 2

**Total Berths:** 6

**Sleeps:** 4

**Total Heads:** 2

---

## Hull and Deck Information

---

**Hull Material:** Fiberglass

**Deck Material:** Fiberglass

**Hull Configuration:** Modified V-Hull

**Hull Color:** Midnight Blue

**Hull Designer:** Sea Ray

---

## Engine Information

---

**Engines:** 2

**Manufacturer:** Cummins

**Engine Type:** Inboard

**Fuel Type:** Diesel

# PHOTOS







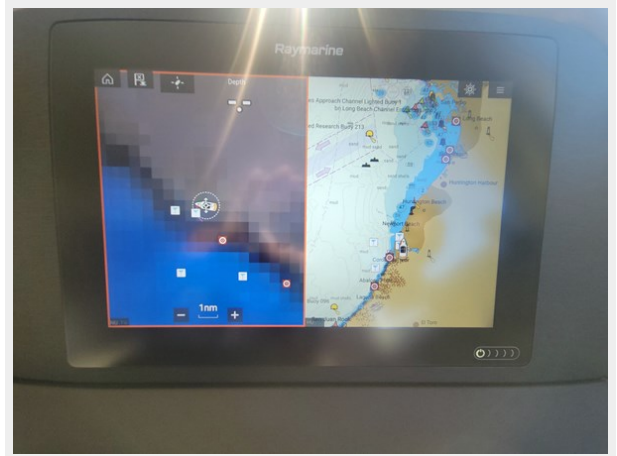


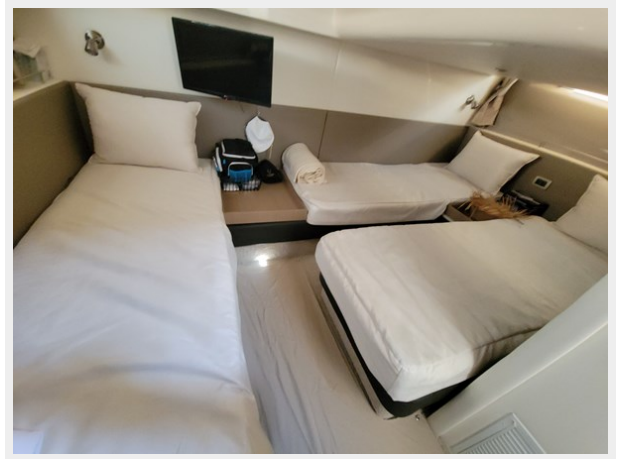
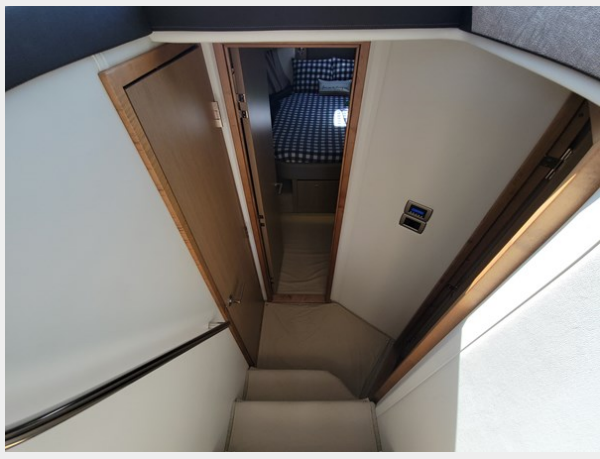




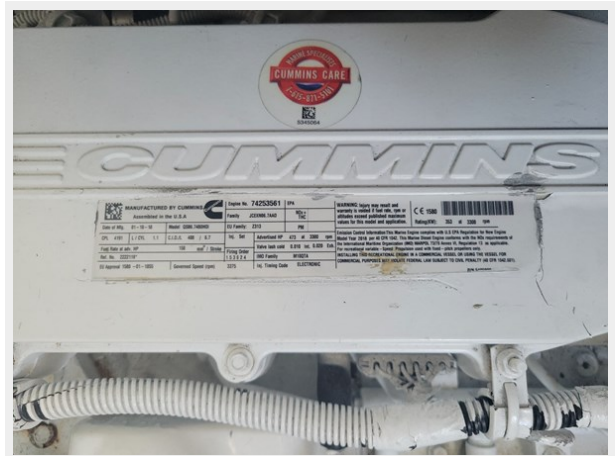
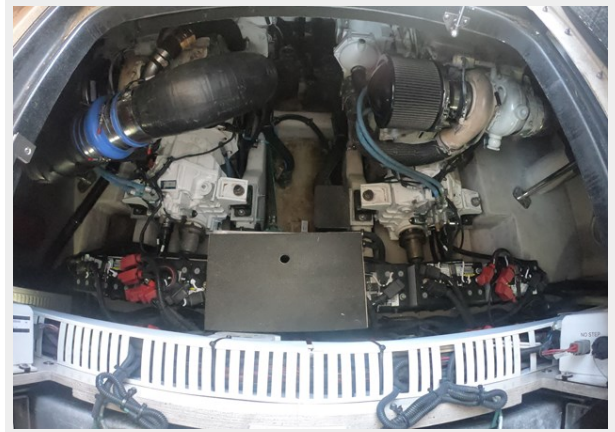














---

# CONTACTS

---

Andrey Shestakov, leading yacht broker of the sales department of Shestakov Yacht Sales Inc. Shestakov Yacht Sales Inc., the official representative of the Miami/Fort Lauderdale FL headquarters.

---

## Contact details

---

Email: [andrey@shestakovyachtsales.com](mailto:andrey@shestakovyachtsales.com)

Web: [shestakovyachtsales.com/en/](http://shestakovyachtsales.com/en/)

---

## Telephones

---

USA: +1(954)274-4435

---

## Office hours

---

Monday – Saturday: **9:00 - 21:00** EDT

Sunday: **closed**

---

## Address

---



Harbour Towne Marina, 850 NE 3rd St,  
STE 213, Dania, FL 33004