

## LITHIUM — AZIMUT YACHTS



**Builder:** AZIMUT YACHTS

**Year Built:** 2015

**Model:** Flybridge

**Price:** \$799,000 USD

**Location:** United States

**LOA:** 54' 5" (16.59mm)

**Beam:** 15.7

**Min Draft:** 4' 11" (1.49mm)

**Max Draft:** 4' 11" (1.49mm)

**Cruise Speed:** 26 Knots Kts. (30 MPH)

**Max Speed:** 31 Knots Kts. (36 MPH)

Our experienced yacht broker, Andrey Shestakov, will help you choose and buy a yacht that best suits your needs **Lithium — AZIMUT YACHTS** from our catalogue. Presently, at Shestakov Yacht Sales Inc., we have a wide variety of yachts available on our sale's list. We also work in close contact with all the big yacht manufacturers from all over the world.

If you would like to buy a yacht **Lithium — AZIMUT YACHTS** or would like help answering any questions concerning purchasing, selling or chartering a yacht, please call **+1(954)274-4435**

---

# TABLE OF CONTENTS

---

TABLE OF CONTENTS	2
SPECIFICATIONS	3
Overview	3
Basic Information	7
Dimensions	7
Speed, Capacities and Weight	7
Accommodations	7
Hull and Deck Information	7
Engine Information	8
PHOTOS	9
CONTACTS	21
Contact details	21
Telephones	21
Office hours	21
Address	21

---

# SPECIFICATIONS

---

## Overview

---

The **2015 Azimut 55S** is the epitome of speed and sophistication. Powered by 3 Volvo Penta IPS 600 engines, this vessel delivers the ultimate sporty experience. Lithium is sleek and impressive on the water. Her outdoor living spaces are expansive and include a wet bar, electric grill, and beautiful L-shaped seating area with a modern table. Inside, the main salon is elegant and contemporary. Design features include large panoramic windows, light washed hardwood floors, modern white and grey upholstery and accents, a comfortable seating area with a high and low dining table, main floor galley, and a retractable sunroof. At the bow there is a large and comfortable area for sunbathing. The vessel has three exquisitely appointed staterooms, each offering comfort, privacy, and modern heads. Lithium is both impressive and memorable, reminiscent of a coupé. She is the ideal yacht for a buyer looking for a contemporary and innovative yacht!

### HIGHLIGHTS:

- VOLVO PENTA IPS ENGINES (Hours 1175\*)
- KOHLER GENERATOR
- RAY MARINE NAVIGATION SYSTEM
- JOYSTICK
- BOW THRUSTER
- RADAR
- LOG-SPEEDOMETER
- NAVIGATION CENTER
- DEPTH SOUNDER
- CHART PLOTTER
- AUTO PILOT
- RADIO
- CD PLAYER
- FUSION SOUND SYSTEM
- GPS
- COCKPIT SPEAKERS
- VHF RADIO
- BOW THRUSTER
- ELECTRIC BILGE PUMP
- MODERN AND CONTEMPORARY INTERIOR FINISHES
- WHITE CABINETRY IN GALLEY
- SKYLIGHT

- 3 STATEROOMS WITH 2 ENSUITE HEADS
- MASTER STATEROOM WITH QUEEN BED AND ENSUITE BATH (MIDSHIP)
- VIP STATEROOM WITH QUEEN BED, ENSUITE BATH AND SKYLIGHT
- PLUSH CARPETING
- FUSION SURROUND SOUND SYSTEM
- BOSE SPEAKER
- WASHER AND DRYER COMBO
- ELECTRIC GRILL (AFT COCKPIT)
- WET BAR (AFT COCKPIT)
- REFRIGERATOR (AFT COCKPIT)
- GARAGE
- HYDRAULIC SWIM PLATFORM WITH BEACH PACKAGE
- TEAK DECKS

#### **ENGINE AND GENERATOR:**

- VOLVO IPS ENGINE (Hours 1175\* average)
- K OHLER 20E0ZD GENERATOR
- GENERATOR HOURS: 2078
- GENERATOR: 20KW 60HZ

#### **NAVIGATION SYSTEMS/COMPONENTS:**

- RAY MARINE NAV SCREENS
- RPM INDICATORS
- JOYSTICK CONTROL
- ENGINE CONTROLS
- BOW THRUSTER
- INTEGRATED IPS STEERING
- RADAR

#### **MAIN SALON / DINNETTE / GALLEY**

- MODERN AND OPEN WITH ABUNDANT USE OF GLASS, CONTEMPORARY STYLING AND WHITE CABINETY

- ISOTHERM REFRIGERATOR
- FREEZER
- STAINLESS STEEL SINK
- MIELE INDUCTION COOK TOP
- MICROWAVE
- DINING TABLE (RISE/FALL) WITH STORAGE
- BENCH SEATING
- TELEVISION (retractable)
- FUSION SURROUND SOUND WITH BOSE SPEAKERS
- MODERN GRAY AND WHITE SOFA SEATING
- SKYLIGHT
- RECESSED LED OVERHEAD LIGHTING
- POLISHED STAINLESS STEEL HANDRAILS AT STAIRCASE LEADING TO LOWER LEVEL

#### **AFT COCKPIT SEATING AREA:**

- SLIDING GLASS DOORS THAT OPEN TO MAIN SALON
- ELECTRIC GRILL
- SINK
- PASSERELLE / GANGWAY
- ENGINE ROOM ACCESS
- TEAK FLOORING
- SEATING / EATING AREA
- OVERHEAD LED LIGHTING
- FENDER HOLDERS
- MOORING STATION / CLEATS
- ACCESS TO SWIM PLATFORM AND GARAGE

#### **STATEROOMS**

##### **MASTER:**

- LOCATED MIDSHIP
- QUEEN BED WITH HEADBOARD
- BELOW BED STORAGE
- NIGHTSTAND WITH READING LIGHTS
- FULL LENGTH DRESSING MIRROR

- VENETIAN BLINDS
- PLUSH CARPETING
- VANITY TABLE
- RECTANGULAR WINDOWS WITH PORT HOLE
- HANGING CLOSETS (2) WITH SHELVES
- TELEVISION
- ENSUITE BATH WITH SHOWER

**VIP:**

- LOCATED AT BOW
- QUEEN BED
- HEADBOARD WITH READING LIGHTS
- UNDER BED STORAGE (X2) AND ABOVE BED STORAGE
- SHELVING ON SIDES OF BED (AGAINST BULWARK)
- HANGING CLOSET
- LARGE SIDE WINDOWS
- SKYLIGHT
- PLUSH CARPETING
- VENETIAN BLINDS
- ENSUITE BATH WITH SHOWER

**TWIN STATEROOM:**

- TWIN BEDS WITH CENTER NIGHTSTAND
- STARBOARD LOCATION
- RECTANGULAR WINDOW WITH PORT HOLE
- VENETIAN BLINDS
- WALL LIGHTING ON HEADBOARD
- UNDER BED STORAGE
- CLOSET WITH HANGING AND SHELVING
- HALOGEN OVER HEAD SPOTLIGHTS

---

## Basic Information

---

**Category:** Flybridge

**Sub Category:** Flybridge

**Model Year:** 2015

**Year Built:** 2015

**Country:** United States

---

## Dimensions

---

**LOA:** 54' 5" (16.59mm)

**Beam:** 15.7

**Min Draft:** 4' 11" (1.49mm)

**Max Draft:** 4' 11" (1.49mm)

---

## Speed, Capacities and Weight

---

**Cruise Speed:** 26 Knots Kts. (30 MPH)

**Cruise Speed Range:** 294

**Max Speed:** 31 Knots Kts. (36 MPH)

**Max Speed Range:** 252 Kts.

**Gross Tonnage:** 52.9 Pounds

**Water Capacity:** 158.5 Gallons

**Holding Tank:** 46 Gal Gallons

**Fuel Capacity:** 590 Gal Gallons

---

## Accommodations

---

**Total Cabins:** 3

**Sleeps:** 6

**Total Heads:** 2

---

## Hull and Deck Information

---

**Hull Material:** Fiberglass

**Deck Material:** Teak

**Hull Configuration:** Deep Vee

**Hull Designer:** Stefano Righini

**Interior Designer:** Carlo Galeazzi

---

## Engine Information

---

**Engines:** 2

**Manufacturer:** Volvo Penta

**Fuel Type:** Diesel



# PHOTOS

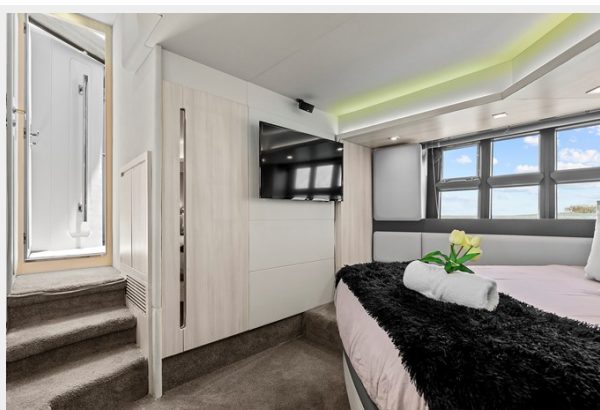
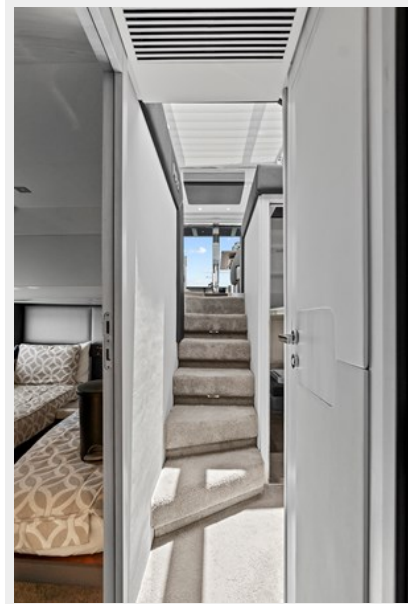




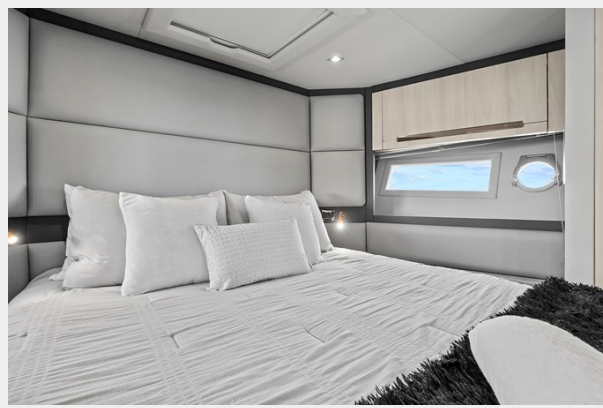




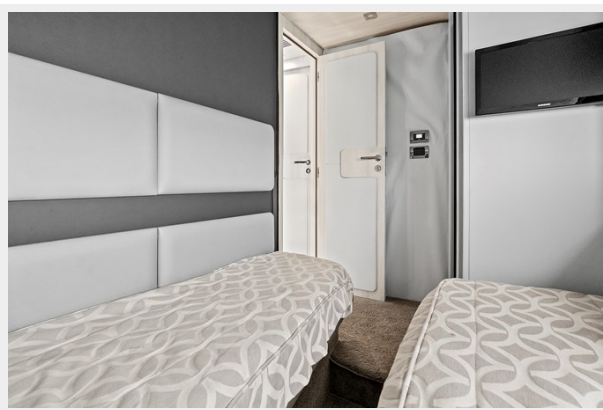






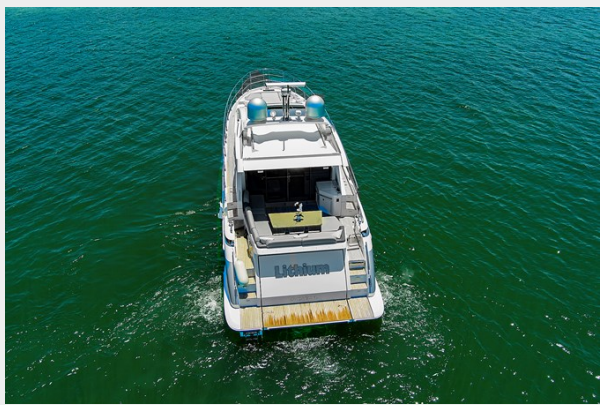












# CONTACTS

---

Andrey Shestakov, leading yacht broker of the sales department of Shestakov Yacht Sales Inc. Shestakov Yacht Sales Inc., the official representative of the Miami/Fort Lauderdale FL headquarters.

## Contact details

---

Email: [andrey@shestakovyachtsales.com](mailto:andrey@shestakovyachtsales.com)

Web: [shestakovyachtsales.com/en/](http://shestakovyachtsales.com/en/)

## Telephones

---

USA: +1(954)274-4435

## Office hours

---

Monday – Saturday: **9:00 - 21:00** EDT

Sunday: **closed**

## Address

---



Harbour Towne Marina, 850 NE 3rd St,  
STE 213, Dania, FL 33004