

# 1983 SWIFTSHIPS CHARTER BOAT — SWIFTSHIPS



**Builder:** SWIFTSHIPS

**Year Built:** 1983

**Model:** Commercial Vessel

**Price:** \$599,000 USD

**Location:** United States

**LOA:** 65' (19.81mm)

**Beam:** 17

**Max Draft:** 6' (1.83mm)

Our experienced yacht broker, Andrey Shestakov, will help you choose and buy a yacht that best suits your needs 1983 Swiftships Charter Boat — SWIFTSHIPS from our catalogue. Presently, at Shestakov Yacht Sales Inc., we have a wide variety of yachts available on our sale's list. We also work in close contact with all the big yacht manufacturers from all over the world.

If you would like to buy a yacht 1983 Swiftships Charter Boat — SWIFTSHIPS or would like help answering any questions concerning purchasing, selling or chartering a yacht, please call **+1(954)274-4435**

---

# TABLE OF CONTENTS

---

TABLE OF CONTENTS	2
SPECIFICATIONS	3
Overview	3
Basic Information	4
Dimensions	4
Speed, Capacities and Weight	4
Accommodations	4
Hull and Deck Information	4
Engine Information	4
PHOTOS	5
CONTACTS	11
Contact details	11
Telephones	11
Office hours	11
Address	11

# SPECIFICATIONS

## Overview

1983 Swiftships Charter Boat Introducing the C/V Enterprise: Your Premier Charter Vessel  
 Age: Built in 1983 Price: \$599,000 Description: Step aboard the legendary C/V Enterprise, a time-tested marvel of maritime engineering ready to embark on its next adventure. Key Features: Reliability: Equipped with twin 12V-71TI Detroit Diesel engines, the C/V Enterprise delivers robust performance and dependable operation, ensuring smooth voyages for you and your guests. Comfort: With spacious cabins, modern amenities, and climate control systems, this vessel provides a comfortable and luxurious environment for extended charters. Safety: USCG approved safety features, including inflatable life rafts, emergency beacons, and fire suppression systems, prioritize the safety and security of all onboard. Versatility: Whether exploring coastal waters or venturing into the open ocean, the C/V Enterprise is equipped to handle a variety of charter experiences, from fishing trips to sightseeing tours. Navigation: State-of-the-art electronics and navigation equipment, including radar, chartplotters, and VHF radios, ensure precise navigation and peace of mind throughout your journey. Commercial Potential: With its spacious layout, robust mechanical systems, and USCG certification, the C/V Enterprise presents an excellent opportunity for commercial charter operations, offering a lucrative venture for seasoned operators.

Specifications: Type: Twin Oil Screw - Welded Aluminum Semi-Planing Hull Navigated Waters: Pacific Coast and Inland Waters Length: 54.2 ft Beam: 17.0 ft Gross Tons: 62 Depth: 6.5 ft Draft: Approx. 6 ft Net Tons: 50 Electronics: Standard Horizon Matrix GX2000 DSC VHF Radio Standard Horizon mH 3000 Loud Hailer with AIS Garmin 8612 XSV Radar, Chartplotter, Sounder Two Garmin 1243 Radar, Chartplotter, Sounder units Cobra 29NW LTD CB Radio Garmin 215 DSC VHF Radio with AIS Sea 222 SSB Radio Furuno 1503 SSB Radio and Globalstar G2 Satellite Phone (to be installed) Personal computer with TimeZero Chartplotting Software Navigation lighting Mechanical Features: Twin 12V-71TI Detroit Diesel Engines Two-cycle turbocharged diesel engines with heat exchanged cooling and air start Horsepower: 550 each at 1800 RPM Twin Disc 5114 SC Transmission with 2.04 to 1 reduction ratio Wagner 6" Steering Compass Hydraulic Steering with two stations Fuel Capacity: 750 gallons (aluminum tank) Aluminum Sewage Waste Tank: 400 gallons Hydraulic Oil Tank: 18 gallons Aluminum Crab Davit and 12-crab block Additional Features: Inflatable life raft with SOLAS IBA Hammerlock Hydrostatic Release ACR Category 1 406 MHz EPIRB First Aid Kit Offshore Flare Kit Engine room manual ventilation closures Emergency fuel shut-off Fire suppression system with CO2 discharge ABC Fire Extinguishers in various compartments USCG Approved excursion safety railings Various alarms for high water, low oil pressure, high coolant temp, etc. Comfort and Convenience: Microwave Oven (Emerson and Riva) Chest Freezer (Black and Decker) New Whirlpool Refrigerator/Freezer Window-mounted Air Conditioner (Riva) Rheem Cabin Heat and Air Conditioning unit Spray foam insulation for noise suppression Power and Electrical Systems: Northern Lights M30C3F Auxiliary Engine 30-KW, 120/240-VAC Single Phase Generator Banks of 72-VDC Marine Batteries 120/240-VAC Power System with main distribution panel Emergency Battery Back-Up System in pilothouse New Blue Seas AC/DC Electrical Panels LED Lighting on pilothouse roof

---

## Basic Information

---

**Category:** Commercial Vessel

**Model Year:** 1983

**Year Built:** 1983

**Country:** United States

---

## Dimensions

---

**LOA:** 65' (19.81mm)

**Beam:** 17

**Max Draft:** 6' (1.83mm)

---

## Speed, Capacities and Weight

---

**Fuel Capacity:** 750 Gal Gallons

---

## Accommodations

---

**Total Heads:** 1

---

## Hull and Deck Information

---

**Hull Material:** Aluminum

---

## Engine Information

---

**Engines:** 2

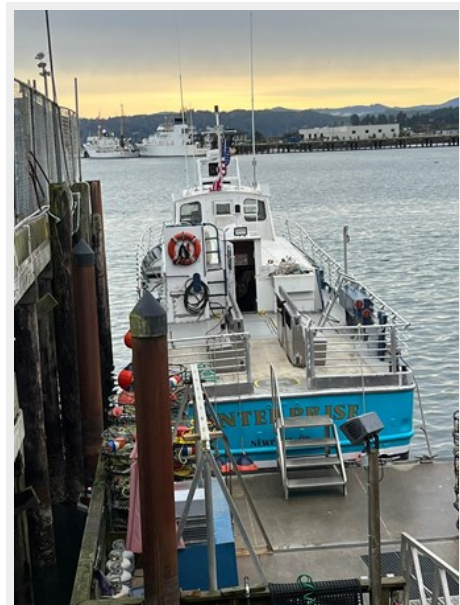
**Manufacturer:** Detroit Diesel

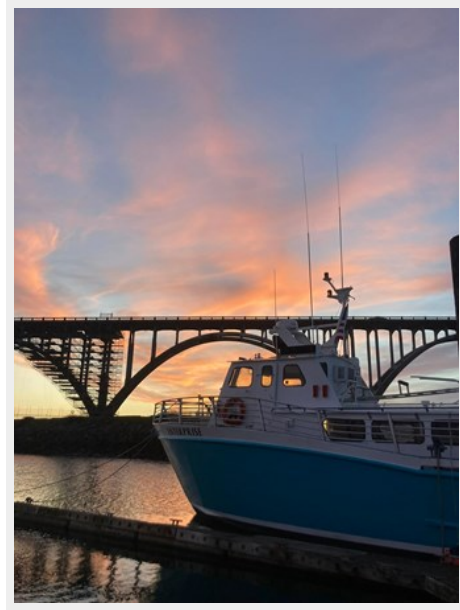
**Engine Type:** Inboard

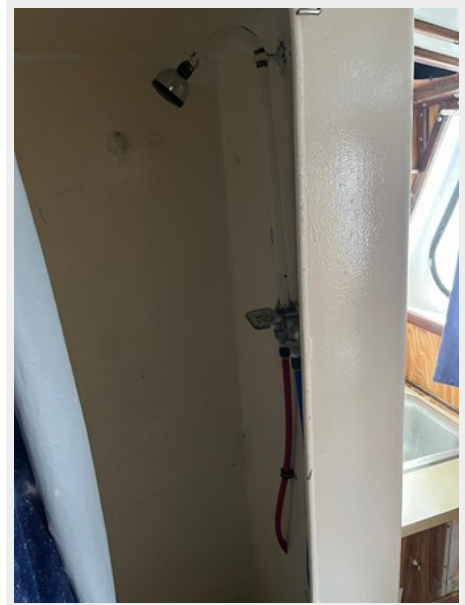
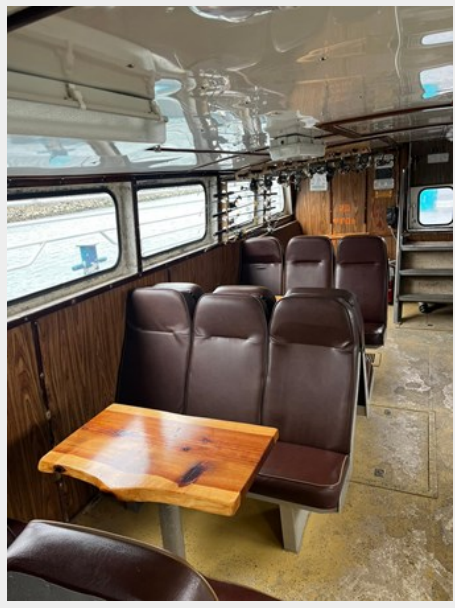
**Fuel Type:** Diesel

# PHOTOS

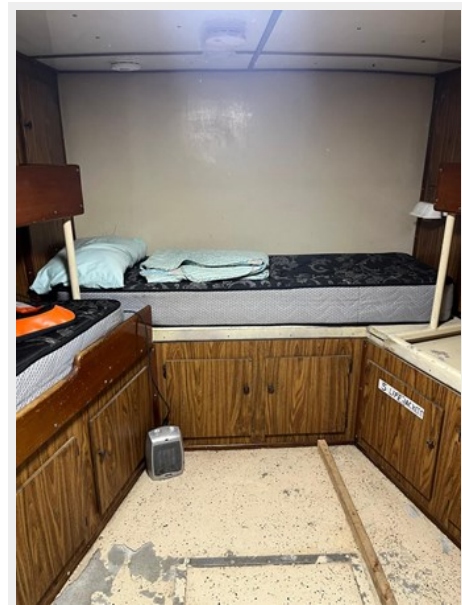














# CONTACTS

---

Andrey Shestakov, leading yacht broker of the sales department of Shestakov Yacht Sales Inc. Shestakov Yacht Sales Inc., the official representative of the Miami/Fort Lauderdale FL headquarters.

## Contact details

---

Email: [andrey@shestakovyachtsales.com](mailto:andrey@shestakovyachtsales.com)

Web: [shestakovyachtsales.com/en/](http://shestakovyachtsales.com/en/)

## Telephones

---

USA: +1(954)274-4435

## Office hours

---

Monday – Saturday: **9:00 - 21:00** EDT

Sunday: **closed**

## Address

---



Harbour Towne Marina, 850 NE 3rd St,  
STE 213, Dania, FL 33004