

1973 LITTLE HOQUIAM FISHING VESSEL — LITTLE HOQUIAM



Builder: LITTLE HOQUIAM

Year Built: 1973

Model: Commercial Vessel

Price: \$800,000 USD

Location: United States

LOA: 52' (15.85m)

Beam: 15.5

Cruise Speed: 8 Knots Kts. (9 MPH)

Our experienced yacht broker, Andrey Shestakov, will help you choose and buy a yacht that best suits your needs 1973 Little Hoquiam Fishing Vessel — LITTLE HOQUIAM from our catalogue. Presently, at Shestakov Yacht Sales Inc., we have a wide variety of yachts available on our sale's list. We also work in close contact with all the big yacht manufacturers from all over the world.

If you would like to buy a yacht 1973 Little Hoquiam Fishing Vessel — LITTLE HOQUIAM or would like help answering any questions concerning purchasing, selling or chartering a yacht, please call +1(954)274-4435

TABLE OF CONTENTS

TABLE OF CONTENTS	2
SPECIFICATIONS	3
Overview	3
Basic Information	3
Dimensions	4
Speed, Capacities and Weight	4
Hull and Deck Information	4
Engine Information	4
PHOTOS	5
CONTACTS	13
Contact details	13
Telephones	13
Office hours	13
Address	13

SPECIFICATIONS

Overview

1973 Little Hoquiam Fishing Vessel F/V MI LANA: A Distinguished Vessel in the Commercial Fishing Fleet The F/V MI LANA, stationed at Bay Center, Washington, stands as a proud testament to the history and challenges of Willapa Bay. This 52-foot vessel, masterfully crafted by the Little Hoquiam Boat Shop Inc., marks a formidable presence in the Pacific Northwest's Dungeness crab fishery.

Vessel Details: Home Port: Bay Center, WA Gross Tons: 39; Net Tons: 29 Dimensions: L.O.A 52 ft., Breadth 15.8 ft., Depth 8.05 ft. Builder: Little Hoquiam, Boat Shop Inc., Hoquiam, Washington Year Built: 1973 Navigated Waters: Pacific Ocean and adjacent waters Price: \$800,000

Vessel Capabilities and Design: Fish Hold Capacity: 60,000 pounds, ideal for large catches.

General Description: West Coast rigged for crab and tuna, featuring a raked stem, curved forefoot, round chine, and a semi-rounded stern. The hull forms solid bulwarks with wood and aluminum pipe caps.

Construction Materials: Hull: Molded fiberglass, heavy solid laminate. Foredeck Frames: 4 x 4 yellow cedar. Deck Covering: 1 ½ inch marine plywood with fiberglass overlay. Cabin Frames: 2x4 inch yellow cedar.

Engine Room and Performance: Main Engine: Cummins NH350M Marine Diesel, 350 HP, new in 2004. 5800 Hours Cooling System: Fresh water through a Walters cooling grid. Transmission: Twin Disc MG 509, new in 2004. Speed: Estimated 8-9 knots.

Electronics and Navigation Equipment: Radar/Plotter: NavNet 3D. GPS Systems: Garmin 2010C, Furuno GP-31, North Star Explorer 567-GPS. VHF Transceivers: Ranger RCI 6030, Icom IC-45. Autopilot: Furuno, new in 2019. Sounders: Lorance X107, Furuno LS 6000. Other Equipment: Echotec CTM-950 Plotter, Navman Tracker M5605 Plotter.

Safety and Additional Features: Life Rafts: Two 4-man rafts. Fire Extinguishers: Strategically placed, including in the engine room and galley.

Crab Gear and License: Dungeness crab permit and 500 Crab Pots and Gear available separately for \$450,000.

Deck Machinery & Rigging: Mast: 8-inch aluminum tapered with braces and mounts. Anchor Winch: Thompson hydraulic driven. Crab Block: Warren Junis hydraulic with powered davit. Boat comes with trolling poles, boom, and drag net wheel (no winch).

Fuel and Oil Systems: Total Fuel Capacity: 2340 US gallons across six fiberglass tanks. Oil Tanks: Hydraulic tank of 120 US gallons in welded steel and aluminum.

Electrical Systems: Battery Charging: Newmar Phase 3 PT-40CE charger. Generator: John Deere with a 40KW output. Batteries: Three HD 8D storage batteries and one emergency HD D8.

Basic Information

Category: Commercial Vessel

Model Year: 1973

Year Built: 1973

Country: United States

Dimensions

LOA: 52' (15.85mm)

Beam: 15.5

Speed, Capacities and Weight

Cruise Speed: 8 Knots Kts. (9 MPH)

Fuel Capacity: 2340 Gal Gallons

Hull and Deck Information

Hull Material: Fiberglass

Engine Information

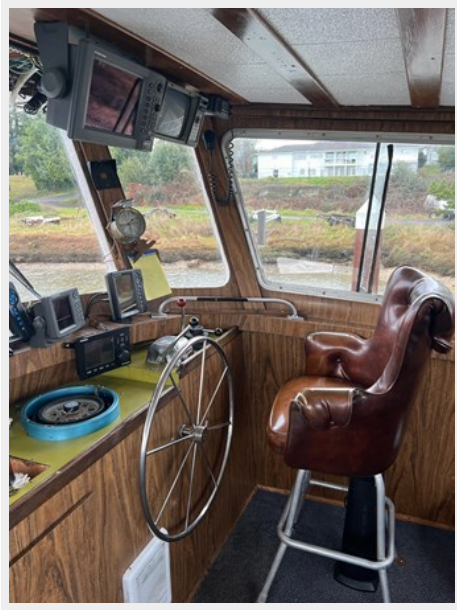
Engines: 1

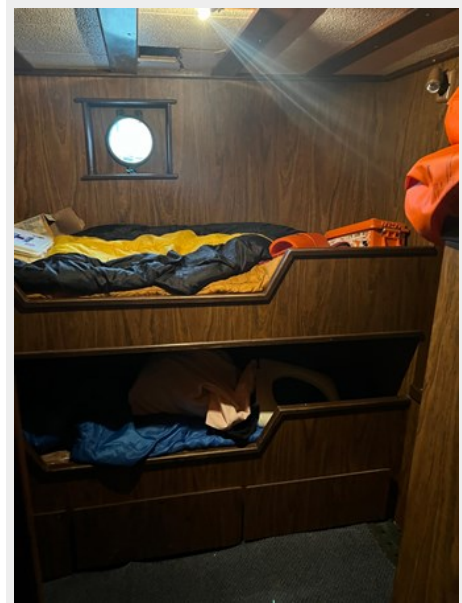
Manufacturer: Cummins

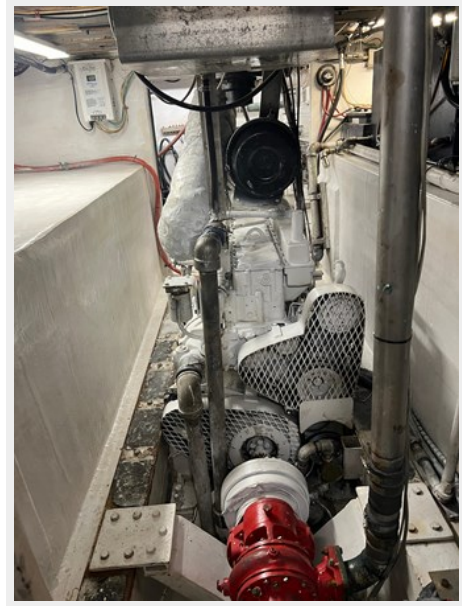
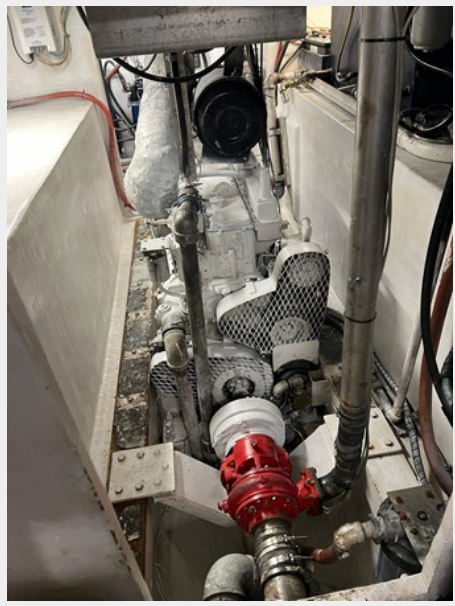
Fuel Type: Diesel

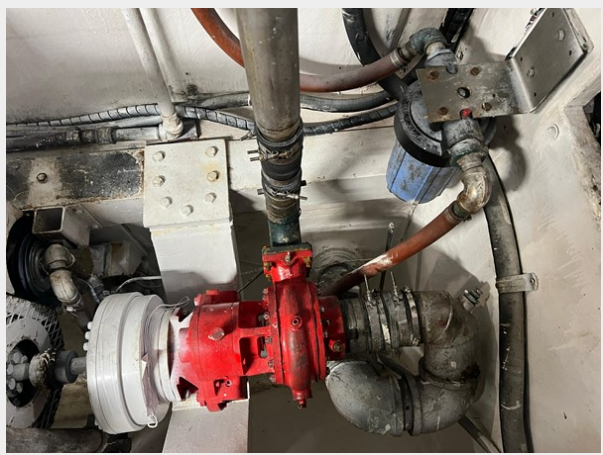
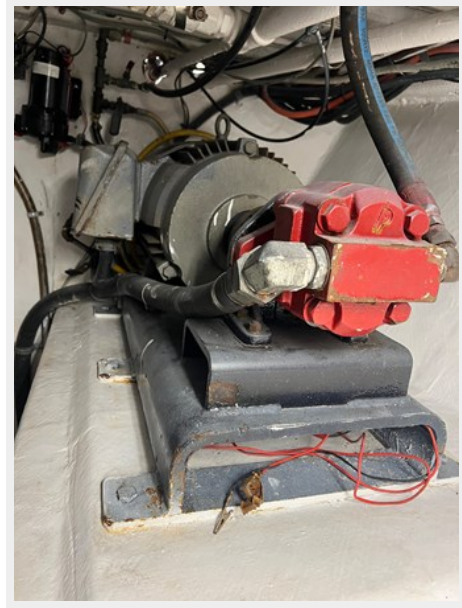
PHOTOS

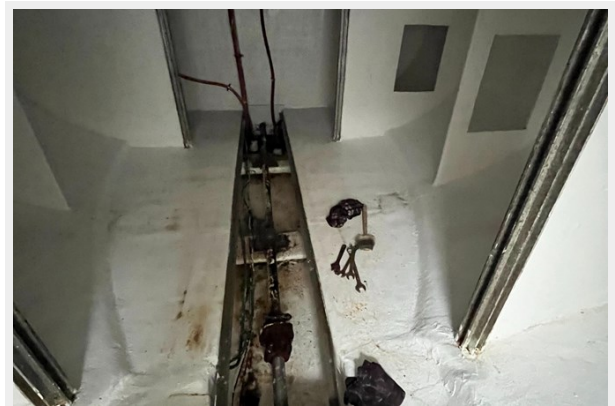




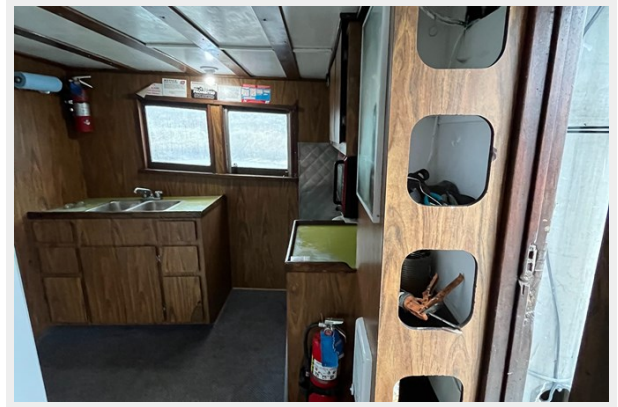












CONTACTS

Andrey Shestakov, leading yacht broker of the sales department of Shestakov Yacht Sales Inc. Shestakov Yacht Sales Inc., the official representative of the Miami/Fort Lauderdale FL headquarters.

Contact details

Email: andrey@shestakovyachtsales.com

Web: shestakovyachtsales.com/en/

Telephones

USA: +1(954)274-4435

Office hours

Monday – Saturday: **9:00 - 21:00** EDT

Sunday: **closed**

Address



Harbour Towne Marina, 850 NE 3rd St,
STE 213, Dania, FL 33004