

1979 CUSTOM LONGLINE/TENDER/CRABBER — CUSTOM



Builder: CUSTOM

Year Built: 1979

Model: Boats

Price: \$640,000 USD

Location: United States

LOA: 66' (20.12mm)

Beam: 19

Max Draft: 8' (2.44mm)

Cruise Speed: 9 Knots Kts. (10 MPH)

Our experienced yacht broker, Andrey Shestakov, will help you choose and buy a yacht that best suits your needs 1979 Custom Longline/Tender/Crabber — CUSTOM from our catalogue. Presently, at Shestakov Yacht Sales Inc., we have a wide variety of yachts available on our sale's list. We also work in close contact with all the big yacht manufacturers from all over the world.

If you would like to buy a yacht 1979 Custom Longline/Tender/Crabber — CUSTOM or would like help answering any questions concerning purchasing, selling or chartering a yacht, please call +1(954)274-4435

TABLE OF CONTENTS

TABLE OF CONTENTS	2
SPECIFICATIONS	3
Overview	3
Basic Information	3
Dimensions	4
Speed, Capacities and Weight	4
Hull and Deck Information	4
Engine Information	4
PHOTOS	5
CONTACTS	8
Contact details	8
Telephones	8
Office hours	8
Address	8

SPECIFICATIONS

Overview

1979 Custom Longline/Tender/Crabber This 66-foot commercial fishing vessel, owned by Howard Maki, is a steel "whaleback" displacement monohull designed for various fishing activities, including crabbing, longlining, tendering, and crabbing. It features a single diesel inboard engine, steel hull construction. Tender Contract: Has an amazing tender contract in Bristol bay message me for details. 503-730-0842 Comes with a transvac fish pump for tendering, VESSEL TYPE: 66' steel longliner/ tender/ crabber MAIN ENGINE: Make/Model: K19 Cummins Hours: 22,000 hours GENERATORS: 45kw John Deere generator Hours: 35,000 hours 65kw John Deere generator Hours: 0 hours (NEW) REFRIGERATED SEA WATER (RSW): Capacity: 26-ton Cold Seas RSW Year: New in 2022 LONGLINE GEAR: Includes: Longline house 24" Kolestrand longline hauler Morse controls 100 skates of stuck longline gear (very new) ANCHORS: Quantity: 16 anchors POTS AND GROUND LINE: 300 7mm slinky pots 300 Dungy pots 4 door trilogy (new in 2022) FISHING CAPACITY: Packs 110,000 salmon ENGINE SPECIFICATIONS: Make/Model: Cummins KTA19; 500 HP. Type: Diesel, inline 6-cylinder, four-cycle, turbocharged, aftercooled. Serial #: Not seen. Tach Gauge Hours: 12,539 hrs. (installed new 2000). Exhaust: Dry; stainless steel vertical pipe; well lagged & wrapped. Cooling: Keel cooled. Transmission: Twin Disc MG 516; ratio 4.5 : 1; s/n: 3AF-403. Ventilation: Passive through engine room vents. Safety Alarms: Harris Electric low oil pressure, high water temperature, low water level. Drive: (1) 54" x 40" bronze Coolidge four-blade propeller, driven on a 20' long 4" stainless steel shaft with a 4" cold-rolled iron intermediate shaft. (1) spare 56" x 40" bronze propeller. ADDITIONAL DETAILS: VESSEL TYPE: Commercial fishing vessel POWER: Single diesel inboard with propeller HULL TYPE: Steel "whaleback" displacement monohull OWNER: Howard Maki HAILING PORT: Cordova, AK WATERS NAVIGATED: Ketchikan, AK to Unimak Pass, AK, including the Gulf of Alaska. BUILDER: Not provided BUILDER LOCATION: Fort Bragg, CA YEAR BUILT: 1979 TONNAGE: 83 gross / 57 net LENGTH OVERALL: 66 feet REGISTERED LENGTH: 59.8 feet BEAM: 19 feet DEPTH: 9.7 feet DRAFT: Approximately 8 feet CRUISING SPEED: Reportedly 9 knots @ 1600 RPM (cruise) FUEL CONSUMPTION: Reportedly 10 GPH @ cruise

Basic Information

Category: Boats

Model Year: 1979

Year Built: 1979

Country: United States

Dimensions

LOA: 66' (20.12mm)

Beam: 19

Max Draft: 8' (2.44mm)

Speed, Capacities and Weight

Cruise Speed: 9 Knots Kts. (10 MPH)

Hull and Deck Information

Hull Material: Steel

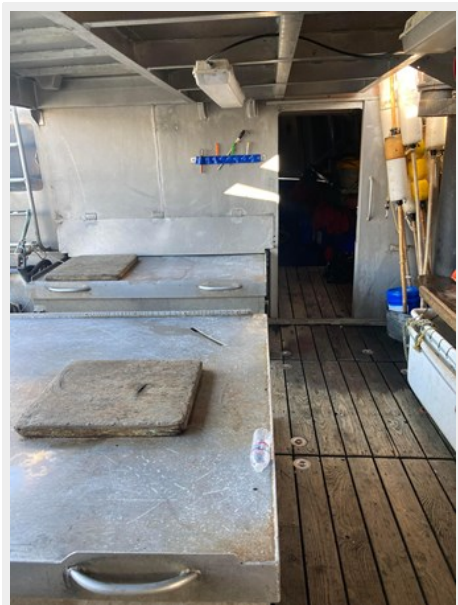
Engine Information

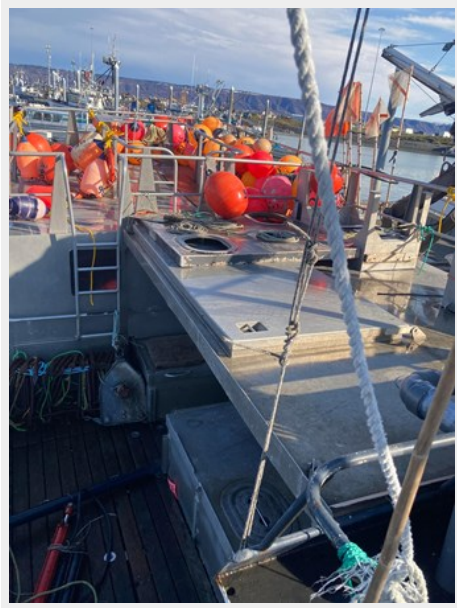
Engines: 1

Manufacturer: Cummins

Fuel Type: Diesel

PHOTOS







CONTACTS

Andrey Shestakov, leading yacht broker of the sales department of Shestakov Yacht Sales Inc. Shestakov Yacht Sales Inc., the official representative of the Miami/Fort Lauderdale FL headquarters.

Contact details

Email: andrey@shestakovyachtsales.com

Web: shestakovyachtsales.com/en/

Telephones

USA: +1(954)274-4435

Office hours

Monday – Saturday: **9:00 - 21:00** EDT

Sunday: **closed**

Address



Harbour Towne Marina, 850 NE 3rd St,
STE 213, Dania, FL 33004