

2022 ATX SURF BOATS 22 TYPE-S — ATX SURF BOATS



Builder: ATX SURF BOATS

Year Built: 2022

Model: Ski or Wake Boat

Price: \$99,500 USD

Location: United States

LOA: 22' (6.71mm)

Beam: 8.41

Max Draft: 2' 4" (0.71mm)

Our experienced yacht broker, Andrey Shestakov, will help you choose and buy a yacht that best suits your needs **2022 ATX Surf Boats 22 Type-S — ATX SURF BOATS** from our catalogue. Presently, at Shestakov Yacht Sales Inc., we have a wide variety of yachts available on our sale's list. We also work in close contact with all the big yacht manufacturers from all over the world.

If you would like to buy a yacht **2022 ATX Surf Boats 22 Type-S — ATX SURF BOATS** or would like help answering any questions concerning purchasing, selling or chartering a yacht, please call **+1(954)274-4435**

TABLE OF CONTENTS

TABLE OF CONTENTS	2
SPECIFICATIONS	3
Overview	3
Basic Information	3
Dimensions	4
Speed, Capacities and Weight	4
Accommodations	4
Engine Information	4
PHOTOS	5
CONTACTS	11
Contact details	11
Telephones	11
Office hours	11
Address	11

SPECIFICATIONS

Overview

2022 ATX Surf Boats 22 Type-S The ATX 22 Type-S is a sleek, head-turning boat designed for serious water sports fun. Its advanced engineering, including over 3,000 lb of ballast, Convex V Hull, and TAPS 3T technology, ensures an effortless and thrilling experience on the water. This modern vessel is not only about performance but also about style, with its striking aesthetics and functionality that demand attention. Ideal for surf, wakeboard, and ski enthusiasts, it offers an unforgettable and easy-to-handle ride.

Dimensions and Weight: Length: 22' (6.71 m) Boat Beam: 102" (259.08 cm) Weight: 4950 lb (2245.28 kg) Ballast: 3000 lb (1360.78 kg) Fuel Capacity: 57 gal (215.77 l) Draft: 29" (73.66 cm) Storage: 101.34 ft³ (2.86 m³) Overall Lengths: With Platform: 23'9" With Platform & Trailer (Extended): 28' With Platform & Trailer (Folded): 25'

Trailer Specifications: Minimum Width: 100" Maximum Width (w/ guide poles): 111" Height, Tower Folded: 7'10" (Without racks), 8'4.5" (With racks) Height, Tower Up on Trailer: 10'7" Weight (Boat & Trailer): 6,450 lbs Weight Capacity: 2,150 lbs

Special Features: TYPE-E Powered Tower Convex V Hull TAPS 3T ATXperience Control Center Wet Sounds Audio Systems Raptor Series by Indmar Captain's Chair ATX Rear View Camera InCharge Phone Holder ATX keyless ignition Standard Equipment: Patented Convex V Hull ATX Shock Tower Boatmate Tandem Axle Trailer ATXperience 7" Touch Screen Base Sound System Premium Gator Step Flooring ATX WaveView Reversible Seat ATX AirFrame Windshield Chromax Badging Aluminum Phone Holder Stainless Steel Cupholders Indmar Raptor ENGINE (2:1 transmission) ATX Sport Wheel Cruise Control (paddle wheel) 4 Stainless Steel Pop-Up Cleats Stainless Steel Rubrail Fiberglass Liner and Storage Standard Driver Mirror Sea Strainer Flush Kit ATX Warranty – 5 Year Enhancements: All Out Paint and Upholstery Schemes Premium Non-Skid Decking Bow Walk-over Insert Cushion Cockpit Lounge Seating Sliding Reversible Seat Upgrade Transom Transformation Package ATX Smart Wing Steering Wheel Controls PTM Pro Driver Mirror Surf + Wake Bungee Board Racks ATX Bimini w/ Surf Storage Power 10 Sound System Audio Transom Remote Under Water Transom Lights x 2 LED Docking Lights ATX Air Shelves GO! System Powered by TAPS 3T Rear View Camera Silent Surf Exhaust Zero Off® GPS Speed Control Heater – 4 Vent Phender Pro Drop-in Cleats Electronic Isolator & Dual Batteries Custom Bow & Cockpit Covers

Basic Information

Category: Ski or Wake Boat

Sub Category: Ski or Wake Boat

Model Year: 2022

Year Built: 2022

Country: United States

Dimensions

LOA: 22' (6.71mm)

Beam: 8.41

Max Draft: 2' 4" (0.71mm)

Speed, Capacities and Weight

Fuel Capacity: 57 Gal Gallons

Accommodations

Sleeps: 15

Engine Information

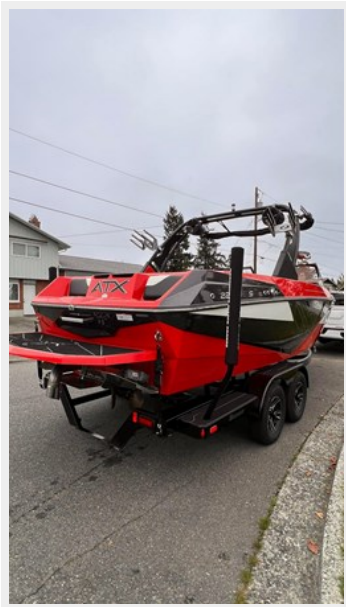
Engines: 1

Manufacturer: Indmar

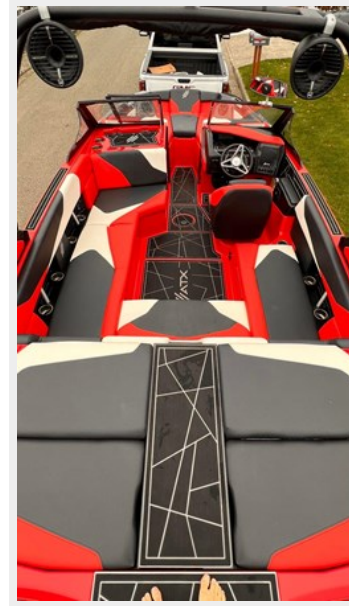
Engine Type: Inboard

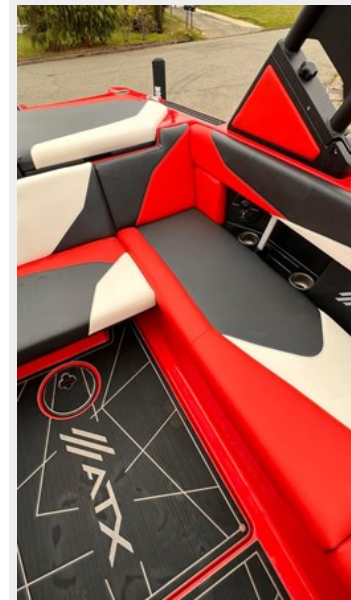
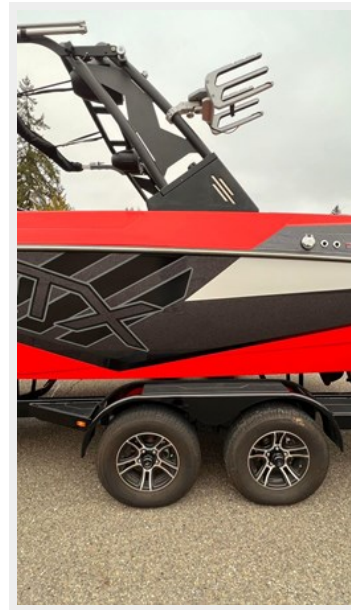
Fuel Type: Gas

PHOTOS













CONTACTS

Andrey Shestakov, leading yacht broker of the sales department of Shestakov Yacht Sales Inc. Shestakov Yacht Sales Inc., the official representative of the Miami/Fort Lauderdale FL headquarters.

Contact details

Email: andrey@shestakovyachtsales.com

Web: shestakovyachtsales.com/en/

Telephones

USA: +1(954)274-4435

Office hours

Monday – Saturday: **9:00 - 21:00** EDT

Sunday: **closed**

Address



Harbour Towne Marina, 850 NE 3rd St,
STE 213, Dania, FL 33004