

2001 BROWARD RAISED PILOTHOUSE MY — BROWARD



Builder: BROWARD

Year Built: 2100

Model: Motor Yacht

Price: \$665,000 USD

Location: United States

LOA: 97' (29.57mm)

Beam: 20

Max Draft: 5' 6" (1.68mm)

Cruise Speed: 18 Knots Kts. (21 MPH)

Max Speed: 24 Knots Kts. (28 MPH)

Our experienced yacht broker, Andrey Shestakov, will help you choose and buy a yacht that best suits your needs 2001 Broward Raised Pilothouse MY — BROWARD from our catalogue. Presently, at Shestakov Yacht Sales Inc., we have a wide variety of yachts available on our sale's list. We also work in close contact with all the big yacht manufacturers from all over the world.

If you would like to buy a yacht 2001 Broward Raised Pilothouse MY — BROWARD or would like help answering any questions concerning purchasing, selling or chartering a yacht, please call +1(954)274-4435

TABLE OF CONTENTS

TABLE OF CONTENTS	2
SPECIFICATIONS	3
Overview	3
Basic Information	4
Dimensions	5
Speed, Capacities and Weight	5
Accommodations	5
Engine Information	5
PHOTOS	6
CONTACTS	18
Contact details	18
Telephones	18
Office hours	18
Address	18

SPECIFICATIONS

Overview

2001 Broward Raised Pilothouse MYTHIS IS A 1/3 OWNER'S SHARE ONLY.MY LADY ALASKA is an EXCEPTIONAL and IMMACULATE Broward motor yacht built in 2001 in the USA. Originally built as M/Y Cortina for a discerning owner, her hull is thicker, she has bigger fuel tankage (8400 gallons and 4000nm range), and three water tight bulkheads. She offers 5 spacious staterooms with ensuite heads, and includes a large on-deck master. There are crew quarters for three crew. The interior features original mahogany cabinetry throughout, and all is in impeccable condition. There is a personal lift system that offers access from the main deck to the wheelhouse and wheelhouse to the flybridge. The aft deck is completely enclosed, fully air conditioned, and has a large table and seating for up to ten.Her desirable Caterpillar 3412E engines and Northern Lights generators have been professionally maintained. MY LADY ALASKA is ready to go cruising and would make an amazing charter yacht!Currently moored in Portland, Oregon.THIS IS A 1/3 OWNER'S SHARE OFFERMy Lady- 97' Broward Motor YachtRecent Maintenance/Upgrades:Bottom paint and propspeed 2/22Props reconditioned 11/20New zincs 2/22Stabilizer service 2/22Exterior detail 2/22Steering- hydraulic rams rebuilt 11/20Generators: oil change and impellers- oil samples taken- 2/22Generator fuel system components replaced 4/22 (both)Mains: oil change and impellers- oil samples taken- 2/22Fire equipment serviced 8/21LED overhead lights throughoutWindows re-caulked 8/21Flybridge windshield new 8/21SimpliSafe alarm systemAnschutz digital gyro compass rebuilt 2/2020New aft deck enclosure 10/21New ice makers on aft deck and flybridge 10/21MSD system serviced and new chem pump 10/21Charles isoboost retrofitted with new controller 11/21Headhunter toilets serviced 10/21New aftercoolers on main engines installed 2019New water heaters (2) 7/21Highlights:5 StateroomsOn-deck masterOnly 3 owners!Recently detailed and waxedDay headPersonal lift/elevator for main deck, pilothouse, flybridgeMain Salon:All freestanding furnitureSamsung 75" flatscreen TVYamaha RX-V775 receiverCreston CNMSX- AV controlCrown amplifier CP660Yamaha CD-C600 disk changerYamaha BD-S673 Blu-ray playerNew Frontier Electronics surge suppressorRemote control window blindsKVH/Direct TVGalley:Maytag stainless steel range, 4-burner, double ovenFrigidaire MicrowaveSub-Zero stainless-steel refrigerator and freezerMiele G851SC dishwasherBroan trash compactorKitchenaid garbage disposalDouble stainless-steel sinkDark Corian countertopsLight wood cabinetryTeak and Holly floorsPersonal lift system that goes up to the flybridgeMaster Stateroom:Queen bedEnsuite head with tub/showerHeadhunter toiletHis and hers sinksVanityDressers on both port and starboard with 15 total drawersNightstands on both sides of bedSamsung 43" flatscreen TVB&G Hydra 2000 speed/wind speed/depth repeaterWalk-in closetBuilt-in safeVIP Stateroom:Queen bedVizio flatscreen TV8 drawers13 cabinetsHanging lockerSettee with tableStorage under setteeMicrowave, mini-fridge, sinkEnsuite head with tub showerB&G Hydra 2000 repeaterBroward Yachts alarm system repeaterWatertight doorFWD Twin Stateroom:2 twin beds7 drawersHanging lockerVizio flatscreen TVEnsuite head with walk-in showerAft Twin Stateroom:2 twin bedsVizio flatscreen TV10 drawersHanging lockerEnsuite head with walk-in showerAft Queen Stateroom:Queen bedVizio flatscreen TV8 drawersHanging

locker
 Ensuite head with walk-in shower
 Laundry Room: Frigidair stack washer/dryer
 Wall to wall cabinets with large countertop
 Aft Deck: Completely enclosed and fully air conditioned
 Large sliding Audio control 2 speakers Beverage fridge Sink Ice maker Large I-shaped settee with large dining table
 Engine room access
 Pilothouse: Garmin 7215 GPS chartplotter Furuno FR 1500 radar Furuno FCV-58 depth sounder B&G Hydra 2000 speed, wind speed, depth Northstar 952X chartplotter Computank tank monitoring system Elbex CCTV monitor for engine room with PTZ camera Standard Horizon GX5000S VHF Caterpillar electronic control monitors and analog gauges Naiad bow thruster ACR spotlight control x2 Kobelt throttles Anschutz digital gyro compass Anschutz Pilotstar autopilot Naiad multi-sea II stabilizers JRC Navtex receiver NCR-330 Broward Yachts integrated alarm system Windshield wipers with wash x3 Aqua Air windshield defogger SEA 235 HF SSB 8 channel exterior CCTV with DVR Personal lift to go down to galley or up to flybridge L-shaped settee with table Flybridge: Port side main helm with starboard wing station Garmin 7215 GPS chartplotter Furuno radar Kahlenberg M-511 C/D air horns x3 with control B&G Hydra 2000 speed, wind speed, depth x2 ICOM IC-M-127 VHF radio ACR spotlight control x2 Naiad bow thruster control at both wing stations Kobelt throttles x2 Anschutz autopilot Naiad stabilizer remote Caterpillar electronic control monitors Audio control with 4 speakers Personal lift to go down to the pilothouse Nautical structures hydraulic davits 2500 lbs x2- port and starboard Bimini top Teak deck on forward part of flybridge Ice maker Beverage fridge Large chest freezer Revere 8-person life rafts x2- next service 9/23 Life ring with strobe ACR type 1 EPIRB 2 chaise lounges Large L-shaped settee with lounge area on port side L-shaped settee with table on starboard 3 Stidd helm seats Crew Quarters: Captains cabin with double bed- perfect for couple- lots of storage! Dynex flatscreen TV in captain's cabin Broward alarm repeater in captain's cabin Pullman bunk on aft bulkhead of crew area Hotpoint refrigerator/freezer GE Microwave 15 storage cabinets Large supply cabinet Maytag washer/dryer Crew head with walk-in shower Engine room/Engineering: Caterpillar 3412E main engines x2 ZF BW195 transmissions Northern lights generator x2 Silent sound down exhaust on port generator Kobelt throttle controls Village Marine watermaker 6-ton Cruise Air chillers x2- new 2016 Fill Rite fuel transfer system Racor fuel filters Emergency engine room escape to aft deck Headhunter Tidal Wave MSD Capac electroanalytic monitor Kidde automatic fire suppression Computank tank monitoring screen Oil change system for mains/gens/trans Battery chargers for all banks Air compressor Hynautic steering 4 craftsman toolboxes 2 work benches C-power iso-boost 100 for bow and stern power cords (100amp) 2 fresh water pumps 2 AC raw water pumps DeAngelo exhaust 4 fuel tanks Deck equipment: Marquipt boarding stair- 2 piece, 7-step Swim ladder Boarding gates on both port and starboard Maxwell 3500 windlass x2 100-amp cord extension 2 smart Y splitters (2) 50 amp to 100 amp Glendenning on bow and stern Seating on the bow Ships bell Escape hatch for VIP on foredeck Escape hatch for Master on cabinhouse

Basic Information

Category: Motor Yacht

Model Year: 2001

Year Built: 2100

Country: United States

Dimensions

LOA: 97' (29.57mm)

Beam: 20

Max Draft: 5' 6" (1.68mm)

Speed, Capacities and Weight

Cruise Speed: 18 Knots Kts. (21 MPH)

Max Speed: 24 Knots Kts. (28 MPH)

Water Capacity: 1233 Gallons

Holding Tank: 500 Gal Gallons

Fuel Capacity: 8484 Gal Gallons

Accommodations

Total Cabins: 5

Total Heads: 5

Engine Information

Engines: 2

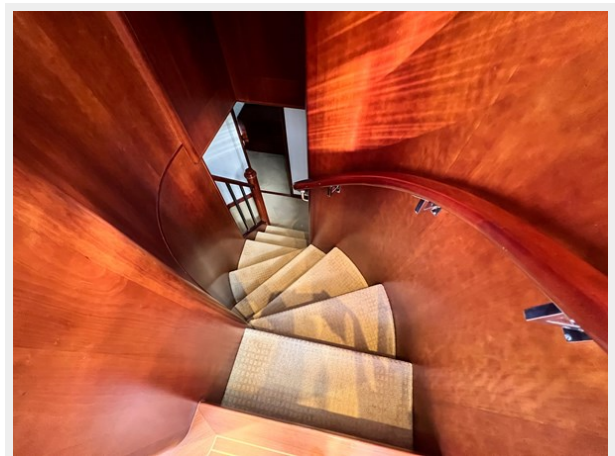
Manufacturer: Caterpillar

Engine Type: Inboard

Fuel Type: Diesel

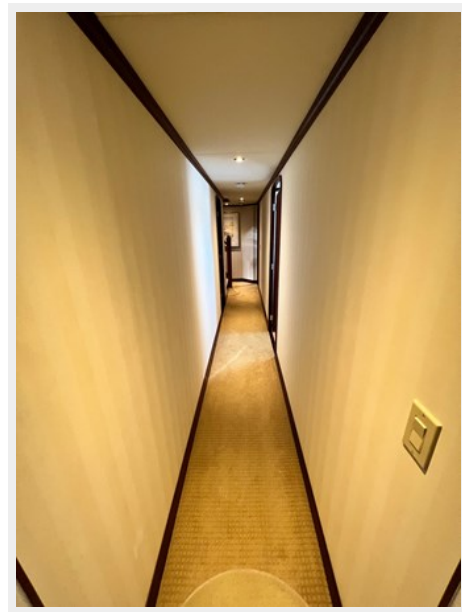
PHOTOS







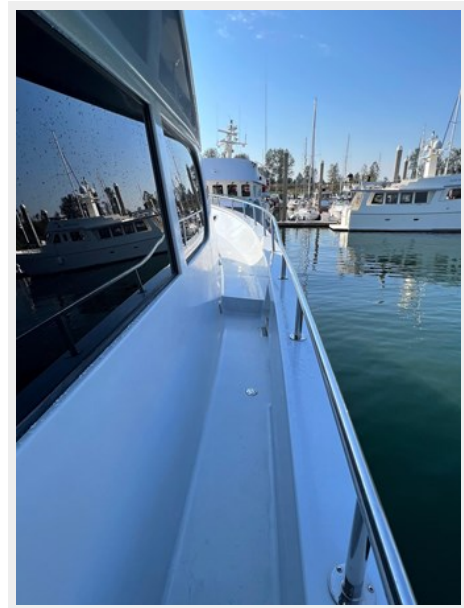


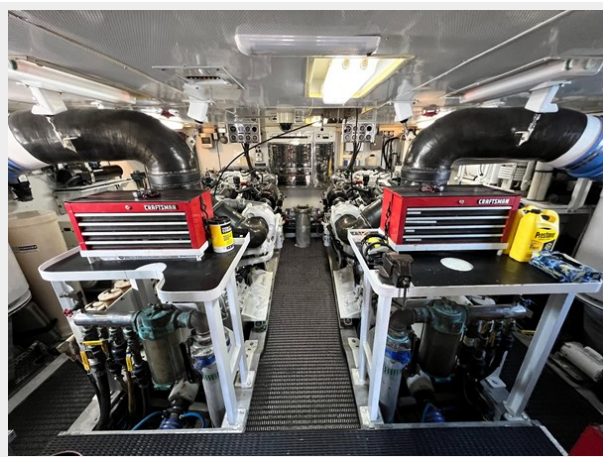
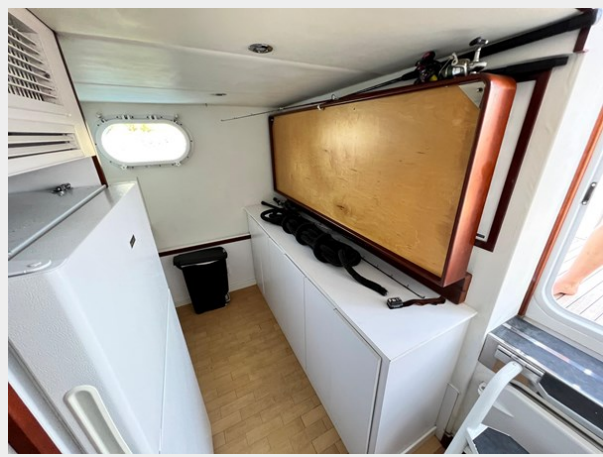


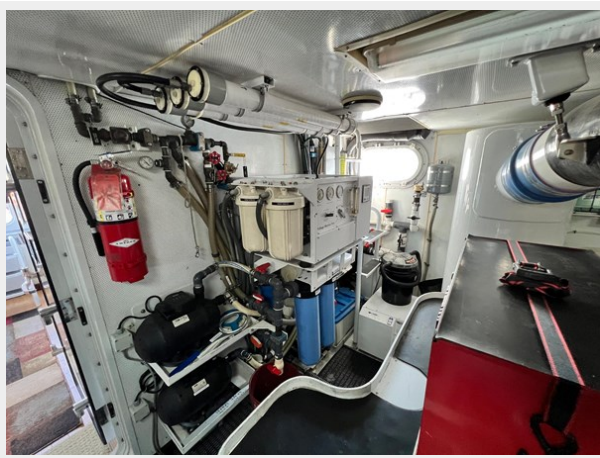
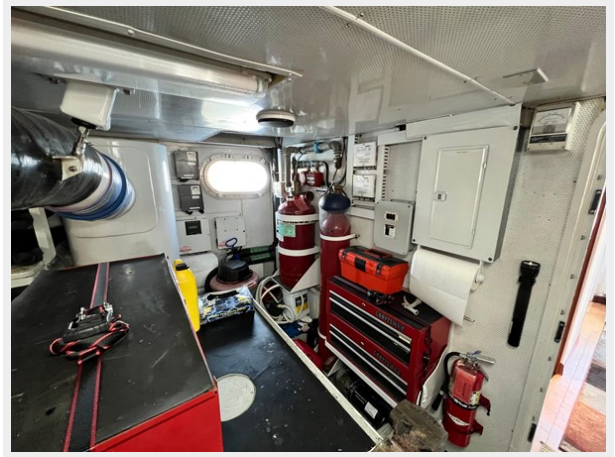


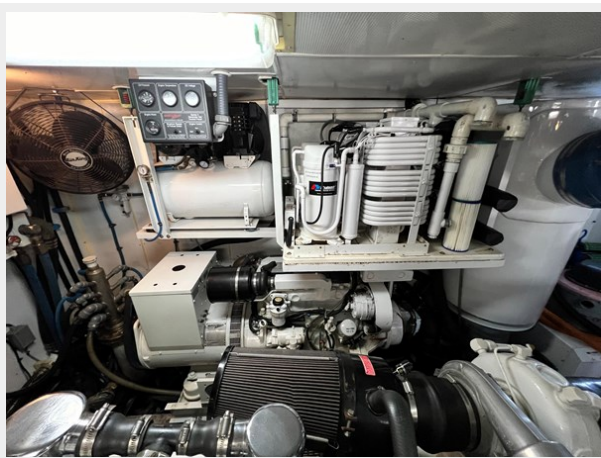
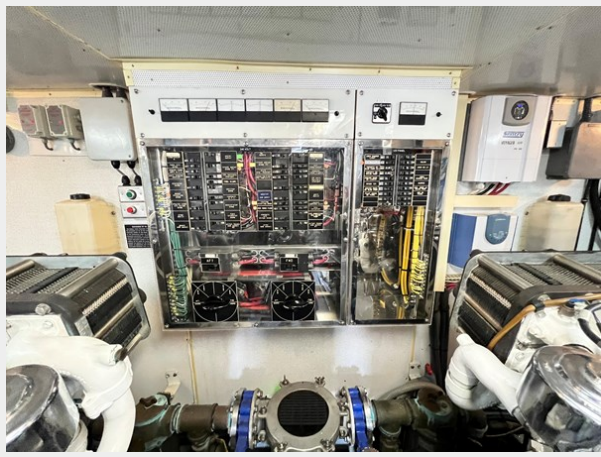












CONTACTS

Andrey Shestakov, leading yacht broker of the sales department of Shestakov Yacht Sales Inc. Shestakov Yacht Sales Inc., the official representative of the Miami/Fort Lauderdale FL headquarters.

Contact details

Email: andrey@shestakovyachtsales.com

Web: shestakovyachtsales.com/en/

Telephones

USA: +1(954)274-4435

Office hours

Monday – Saturday: **9:00 - 21:00** EDT

Sunday: **closed**

Address



Harbour Towne Marina, 850 NE 3rd St,
STE 213, Dania, FL 33004