

2001 BROWARD RAISED PILOTHOUSE MY — BROWARD



Судостроитель: BROWARD

Год постройки: 2100

Модель: Моторная яхта

Цена: \$665,000 USD

Местонахождение: United States

Длина общая: 97' (29.57mm)

Ширина: 20

Макс. осадка: 5' 6" (1.68mm)

Крейс. скорость: 18 Knots Kts. (21 MPH)

Макс. скорость: 24 Knots Kts. (28 MPH)

Купить **2001 Broward Raised Pilothouse MY — BROWARD** а также выбрать подходящую вам яхту из нашего каталога яхт вам поможет опытный яхтенный брокер Андрей Шестаков. На сегодняшний день компания **Shestakov Yacht Sales Inc.** имеет большое количество яхт в собственном списке продаж, а также тесно сотрудничает со всеми крупными яхтенными производителями по всему миру.

Для того чтобы купить яхту **2001 Broward Raised Pilothouse MY — BROWARD** а также проконсультироваться по любому вопросу связанному с покупкой, продажей, чартером яхт позвоните по телефону **+7(918)465-66-44**.

ОГЛАВЛЕНИЕ

ОГЛАВЛЕНИЕ	2
ХАРАКТЕРИСТИКИ	3
Обзор	3
Основная информация	4
Размеры	5
Скорость, вместимость и масса	5
Размещение	5
Информация о двигателе	5
ФОТОГРАФИИ	6
КОНТАКТЫ	18
Контактная информация	18
Телефоны	18
Время работы	18
Адрес	18

ХАРАКТЕРИСТИКИ

Обзор

2001 Broward Raised Pilothouse MY THIS IS A 1/3 OWNER'S SHARE ONLY.MY LADY ALASKA is an EXCEPTIONAL and IMMACULATE Broward motor yacht built in 2001 in the USA. Originally built as M/Y Cortina for a discerning owner, her hull is thicker, she has bigger fuel tankage (8400 gallons and 4000nm range), and three water tight bulkheads. She offers 5 spacious staterooms with ensuite heads, and includes a large on-deck master. There are crew quarters for three crew. The interior features original mahogany cabinetry throughout, and all is in impeccable condition. There is a personal lift system that offers access from the main deck to the wheelhouse and wheelhouse to the flybridge. The aft deck is completely enclosed, fully air conditioned, and has a large table and seating for up to ten.Her desirable Caterpillar 3412E engines and Northern Lights generators have been professionally maintained. MY LADY ALASKA is ready to go cruising and would make an amazing charter yacht!Currently moored in Portland, Oregon.THIS IS A 1/3 OWNER'S SHARE OFFERMy Lady- 97' Broward Motor YachtRecent Maintenance/Upgrades:Bottom paint and propspeed 2/22Props reconditioned 11/20New zincs 2/22Stabilizer service 2/22Exterior detail 2/22Steering- hydraulic rams rebuilt 11/20Generators: oil change and impellers- oil samples taken- 2/22Generator fuel system components replaced 4/22 (both)Mains: oil change and impellers- oil samples taken- 2/22Fire equipment serviced 8/21LED overhead lights throughoutWindows re-caulked 8/21Flybridge windshield new 8/21SimpliSafe alarm systemAnschutz digital gyro compass rebuilt 2/2020New aft deck enclosure 10/21New ice makers on aft deck and flybridge 10/21MSD system serviced and new chem pump 10/21Charles isoboost retrofitted with new controller 11/21Headhunter toilets serviced 10/21New aftercoolers on main engines installed 2019New water heaters (2) 7/21Highlights:5 StateroomsOn-deck masterOnly 3 owners!Recently detailed and waxedDay headPersonal lift/elevator for main deck, pilothouse, flybridgeMain Salon:All freestanding furnitureSamsung 75" flatscreen TVYamaha RX-V775 receiverCreston CNMSX- AV controlCrown amplifier CP660Yamaha CD-C600 disk changerYamaha BD-S673 Blu-ray playerNew Frontier Electronics surge suppressorRemote control window blindsKVH/Direct TVGalley:Maytag stainless steel range, 4-burner, double ovenFrigidaire MicrowaveSub-Zero stainless-steel refrigerator and freezerMiele G851SC dishwasherBroan trash compactorKitchenaid garbage disposalDouble stainless-steel sinkDark Corian countertopsLight wood cabinetryTeak and Holly floorsPersonal lift system that goes up to the flybridgeMaster Stateroom:Queen bedEnsuite head with tub/showerHeadhunter toiletHis and hers sinksVanityDressers on both port and starboard with 15 total drawersNightstands on both sides of bedSamsung 43" flatscreen TVB&G Hydra 2000 speed/wind speed/depth repeaterWalk-in closetBuilt-in safeVIP Stateroom:Queen bedVizio flatscreen TV8 drawers13 cabinetsHanging lockerSettee with tableStorage under setteeMicrowave, mini-fridge, sinkEnsuite head with tub showerB&G Hydra 2000 repeaterBroward Yachts alarm system repeaterWatertight doorFWD Twin Stateroom:2 twin beds7 drawersHanging lockerVizio flatscreen TVEnsuite head with walk-in showerAft Twin Stateroom:2 twin bedsVizio flatscreen TV10 drawersHanging lockerEnsuite head with walk-in showerAft Queen Stateroom:Queen bedVizio flatscreen TV8 drawersHanging

locker
 Ensuite head with walk-in shower
 Laundry Room: Frigidair stack washer/dryer
 Wall to wall cabinets with large countertop
 Aft Deck: Completely enclosed and fully air conditioned
 Large sliding Audio control 2 speakers
 Beverage fridge Sink Ice maker
 Large I-shaped settee with large dining table
 Engine room access
 Pilothouse: Garmin 7215 GPS chartplotter
 Furuno FR 1500 radar
 Furuno FCV-58 depth sounder
 B&G Hydra 2000 speed, wind speed, depth
 Northstar 952X chartplotter
 Computank tank monitoring system
 Elbex CCTV monitor for engine room with PTZ camera
 Standard Horizon GX5000S VHF
 Caterpillar electronic control monitors and analog gauges
 Naiad bow thruster
 ACR spotlight control x2
 Kobelt throttles
 Anschutz digital gyro compass
 Anschutz Pilotstar autopilot
 Naiad multi-sea II stabilizers
 JRC Navtex receiver NCR-330
 Broward Yachts integrated alarm system
 Windshield wipers with wash x3
 Aqua Air windshield defogger
 SEA 235 HF SSB 8 channel exterior CCTV with DVR
 Personal lift to go down to galley or up to flybridge
 L-shaped settee with table
 Flybridge: Port side main helm with starboard wing station
 Garmin 7215 GPS chartplotter
 Furuno radar
 Kahlenberg M-511 C/D air horns x3 with control
 B&G Hydra 2000 speed, wind speed, depth x2
 ICOM IC-M-127 VHF radio
 ACR spotlight control x2
 Naiad bow thruster control at both wing stations
 Kobelt throttles x2
 Anschutz autopilot
 Naiad stabilizer remote
 Caterpillar electronic control monitors
 Audio control with 4 speakers
 Personal lift to go down to the pilothouse
 Nautical structures hydraulic davits 2500 lbs x2- port and starboard
 Bimini top
 Teak deck on forward part of flybridge
 Ice maker
 Beverage fridge
 Large chest freezer
 Revere 8-person life rafts x2- next service 9/23
 Life ring with strobe
 ACR type 1 EPIRB
 2 chaise lounges
 Large L-shaped settee with lounge area on port side
 L-shaped settee with table on starboard
 3 Stidd helm seats
 Crew Quarters: Captains cabin with double bed- perfect for couple- lots of storage!
 Dynex flatscreen TV in captain's cabin
 Broward alarm repeater in captain's cabin
 Pullman bunk on aft bulkhead of crew area
 Hotpoint refrigerator/freezer
 GE Microwave
 15 storage cabinets
 Large supply cabinet
 Maytag washer/dryer
 Crew head with walk-in shower
 Engine room/Engineering: Caterpillar 3412E main engines x2
 ZF BW195 transmissions
 Northern lights generator x2
 Silent sound down exhaust on port generator
 Kobelt throttle controls
 Village Marine watermaker
 6-ton Cruise Air chillers x2- new 2016
 Fill Rite fuel transfer system
 Racor fuel filters
 Emergency engine room escape to aft deck
 Headhunter Tidal Wave MSD
 Capac electroanalytic monitor
 Kidde automatic fire suppression
 Computank tank monitoring screen
 Oil change system for mains/gens/trans
 Battery chargers for all banks
 Air compressor
 Hynautic steering
 4 craftsman toolboxes
 2 work benches
 C-power iso-boost 100 for bow and stern power cords (100amp)
 2 fresh water pumps
 2 AC raw water pumps
 DeAngelo exhaust
 4 fuel tanks
 Deck equipment: Marquipt boarding stair- 2 piece, 7-step
 Swim ladder
 Boarding gates on both port and starboard
 Maxwell 3500 windlass x2
 100-amp cord extension
 2 smart Y splitters (2) 50 amp to 100 amp
 Glendenning on bow and stern
 Seating on the bow
 Ships bell
 Escape hatch for VIP on foredeck
 Escape hatch for Master on cabinhouse

Основная информация

Тип судна: Моторная яхта

Модельный год: 2001

Год постройки: 2100

Страна: United States

Размеры

Длина общая: 97' (29.57mm)

Ширина: 20

Макс. осадка: 5' 6" (1.68mm)

Скорость, вместимость и масса

Крейс. скорость: 18 Knots Kts. (21 MPH) **Макс. скорость:** 24 Knots Kts. (28 MPH)

Вместимость воды: 1233 Gallons

Вместимость сточного бака: 500 Gal
Gallons

Объем топливного бака: 8484 Gal
Gallons

Размещение

Всего кают: 5

Всего ком. состава: 5

Информация о двигателе

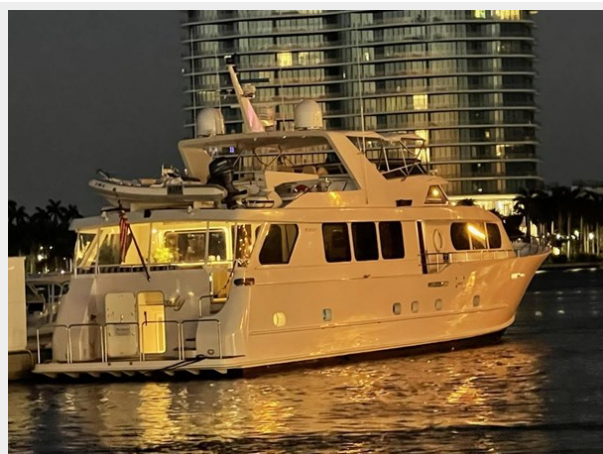
Двигатели: 2

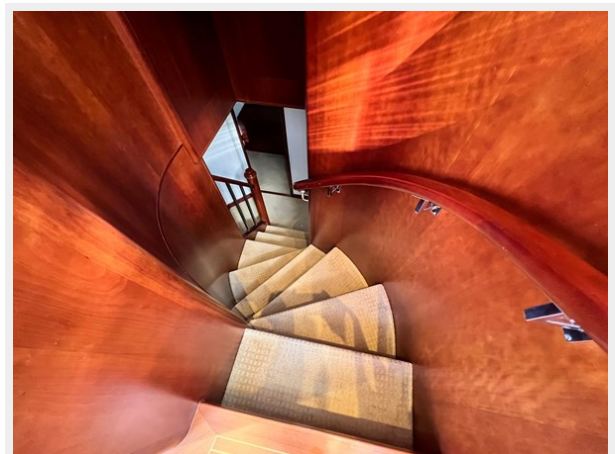
Производитель: Caterpillar

Тип двигателя: Inboard

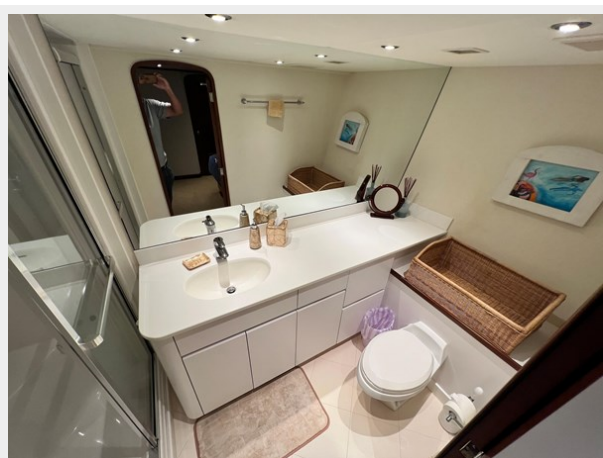
Тип топлива: Diesel

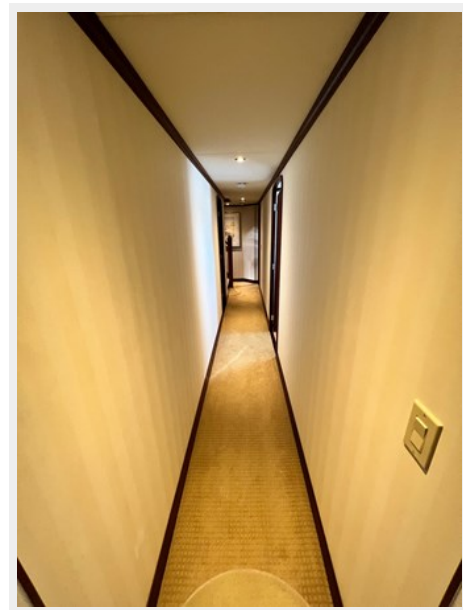
ФОТОГРАФИИ







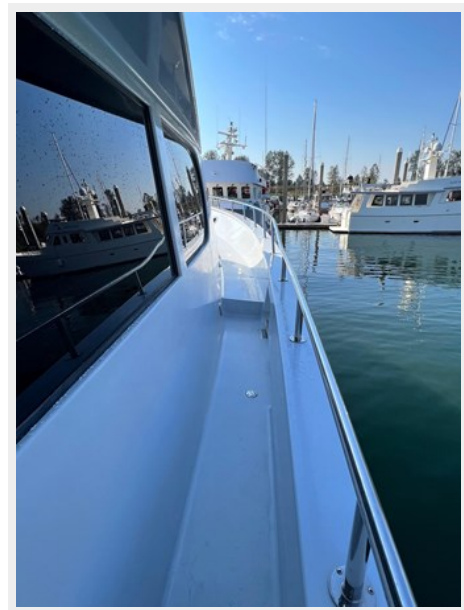


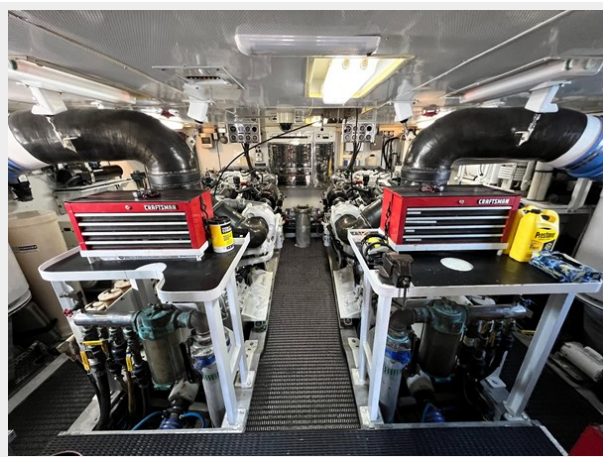
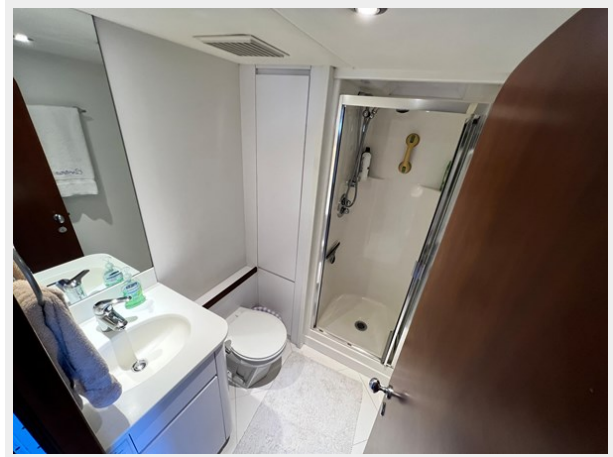
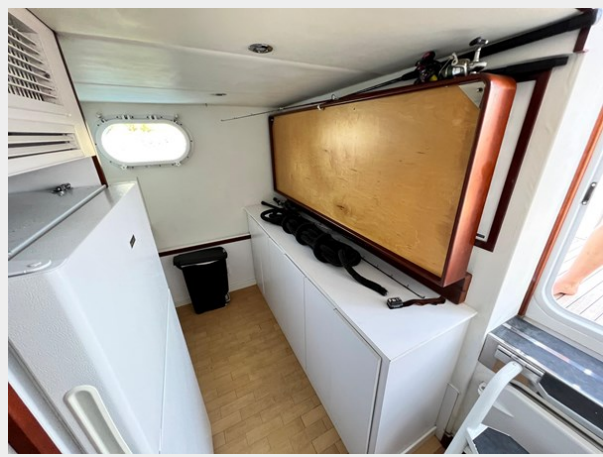


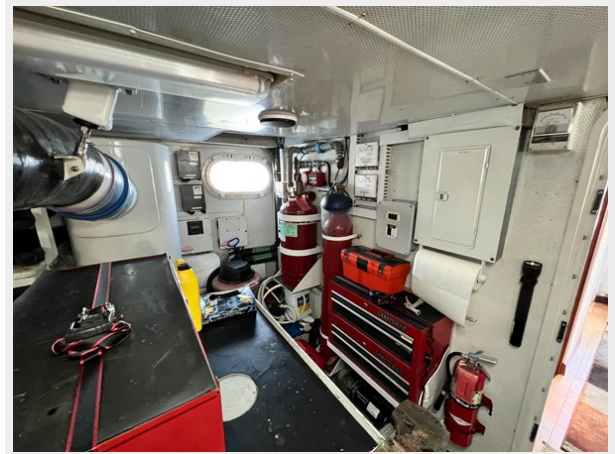
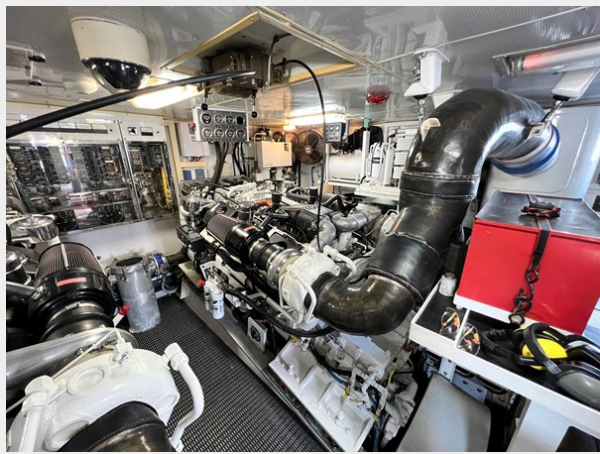


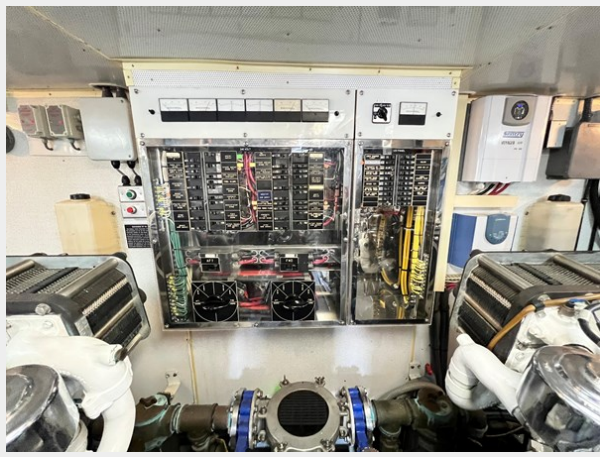












КОНТАКТЫ

Андрей Шестаков (Andrey Shestakov) – ведущий яхтенный брокер отдела продаж яхт и судов компании Shestakov Yacht Sales Inc. Официальный представитель Shestakov Yacht Sales Inc. для русскоговорящих клиентов в центральном офисе компании в Майами/Форт Лодердейл/Флорида/США.

Контактная информация

Email: andrey@shestakovyachtsales.com

Web: shestakovyachtsales.com

Телефоны

Краснодарский край: **+7(918)465-66-44**

США, Майами, Флорида: **+1(954)274-4435**

Время работы

Понедельник – Суббота: **9:00 - 21:00**
EDT

Воскресенье: **Закрето**

Адрес



Harbour Towne Marina, 850 NE 3rd St,
STE 213, Dania, FL 33004