

1995 CAROLINA CLASSIC 28 — CAROLINA CLASSIC



Builder: CAROLINA CLASSIC

Year Built: 1995

Model: Sport Fisherman

Price: \$29,500 USD

Location: United States

LOA: 28' 4" (8.64mm)

Beam: 10.41

Max Draft: 2' (0.61mm)

Cruise Speed: 28 Knots Kts. (32 MPH)

Our experienced yacht broker, Andrey Shestakov, will help you choose and buy a yacht that best suits your needs 1995 Carolina Classic 28 — CAROLINA CLASSIC from our catalogue. Presently, at Shestakov Yacht Sales Inc., we have a wide variety of yachts available on our sale's list. We also work in close contact with all the big yacht manufacturers from all over the world.

If you would like to buy a yacht 1995 Carolina Classic 28 — CAROLINA CLASSIC or would like help answering any questions concerning purchasing, selling or chartering a yacht, please call +1(954)274-4435

TABLE OF CONTENTS

TABLE OF CONTENTS	2
SPECIFICATIONS	3
Overview	3
Basic Information	3
Dimensions	3
Speed, Capacities and Weight	3
Accommodations	3
Engine Information	4
PHOTOS	5
CONTACTS	11
Contact details	11
Telephones	11
Office hours	11
Address	11

SPECIFICATIONS

Overview

1995 Carolina Classic 28 NEW PRICE REDUCTION First time to market in 10 years. Honey Bee is an incredible machine with twin 7.4L Volvo motors producing 330 HP each. Hours are 1022 Port and 1026 Starboard. Fuel capacity is rated at 290 gallons for extended cruising. Everyone will be happy aboard this Carolina Classic with a spacious cabin, giant cockpit and features galore. Most notable features include: Heat/AC Fiberglass Swim Step Macerated Fish Boxes Lee Pro Series Riggers Guest Remote Spotlight She's equipped like a 40ft Sport Fish in a manageable package. Safe & easy navigation is made possible with her Furuno 1751 Open Array Radar and autopilot. She sits on a triple axle aluminum trailer for transporting Honey Bee around the Pacific Northwest

Basic Information

Category: Sport Fisherman

Model Year: 1995

Year Built: 1995

Country: United States

Dimensions

LOA: 28' 4" (8.64mm)

Beam: 10.41

Max Draft: 2' (0.61mm)

Speed, Capacities and Weight

Cruise Speed: 28 Knots Kts. (32 MPH)

Water Capacity: 20 Gallons

Holding Tank: 10 Gal Gallons

Fuel Capacity: 290 Gal Gallons

Accommodations

Total Cabins: 1

Sleeps: 5

Total Heads: 1

Engine Information

Engines: 2

Manufacturer: Volvo

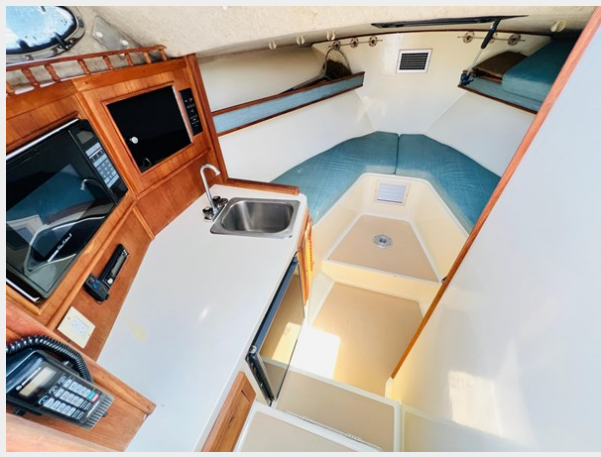
Engine Type: I/O

Fuel Type: Gas

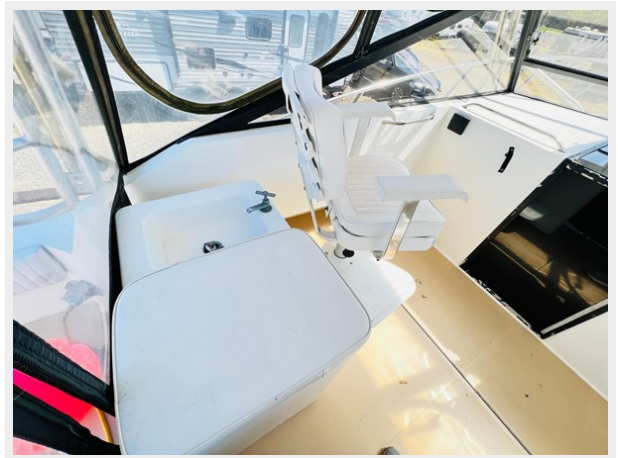
PHOTOS













CONTACTS

Andrey Shestakov, leading yacht broker of the sales department of Shestakov Yacht Sales Inc. Shestakov Yacht Sales Inc., the official representative of the Miami/Fort Lauderdale FL headquarters.

Contact details

Email: andrey@shestakovyachtsales.com

Web: shestakovyachtsales.com/en/

Telephones

USA: +1(954)274-4435

Office hours

Monday – Saturday: **9:00 - 21:00** EDT

Sunday: **closed**

Address



Harbour Towne Marina, 850 NE 3rd St,
STE 213, Dania, FL 33004