

2005 REGAL COMMODORE 4260 — REGAL



Builder: REGAL

Year Built: 2005

Model: Motor Yacht

Price: \$199,000 USD

Location: United States

LOA: 44' (13.41mm)

Beam: 14

Max Draft: 2' 9" (0.84mm)

Cruise Speed: 20 Knots Kts. (23 MPH)

Max Speed: 26 Knots Kts. (30 MPH)

Our experienced yacht broker, Andrey Shestakov, will help you choose and buy a yacht that best suits your needs **2005 Regal Commodore 4260 — REGAL** from our catalogue. Presently, at Shestakov Yacht Sales Inc., we have a wide variety of yachts available on our sale's list. We also work in close contact with all the big yacht manufacturers from all over the world.

If you would like to buy a yacht **2005 Regal Commodore 4260 — REGAL** or would like help answering any questions concerning purchasing, selling or chartering a yacht, please call **+1(954)274-4435**

TABLE OF CONTENTS

TABLE OF CONTENTS	2
SPECIFICATIONS	3
Overview	3
Basic Information	3
Dimensions	3
Speed, Capacities and Weight	4
Accommodations	4
Engine Information	4
PHOTOS	5
CONTACTS	22
Contact details	22
Telephones	22
Office hours	22
Address	22

SPECIFICATIONS

Overview

2005 Regal Commodore 4260 100% Freshwater Moored Discover the perfect blend of luxury and performance with "Kava," a 2005 Regal Commodore 4260 Express Cruiser. With a sleek 44-foot length overall and a spacious 14-foot beam, this boat offers style and comfort for your adventures on the water. Powered by twin Volvo Penta 8.1 GLXI engines, producing 420 hp each, "Kava" cruises comfortably at 20 knots and can reach up to 26 knots. On deck, you'll find a spacious cockpit ideal for entertaining, featuring new canvas (2018) and carpet (2021). Inside, the cabin is beautifully finished with cherry wood, offering a queen forward berth, two single aft berths, and two electrical heads with showers. The galley is fully equipped with a stainless fridge, freezer, microwave, and a 2-burner stove. The boat's electronics were upgraded in 2021, including a Raymarine GPS, depth sounder, knot meter, AIS, chart plotter, radar, and autopilot. Enjoy your time onboard with a stereo system, a smart TV in the cockpit, and three additional TVs in the salon and berths. "Kava" is ready for any adventure, featuring an electric windlass, davits, swim ladder, BBQ, transom shower, and more. The mechanical and electrical systems are in great shape, with a Kohler 7.3KW generator, four batteries, and a stainless water tank installed in 2018. Whether you're planning extended voyages or weekend getaways, "Kava" offers the comfort, features, and reliability you need. This exceptional express cruiser is ready to make your boating dreams come true.

Basic Information

Category: Motor Yacht

Model Year: 2005

Year Built: 2005

Country: United States

Dimensions

LOA: 44' (13.41mm)

Beam: 14

Max Draft: 2' 9" (0.84mm)

Speed, Capacities and Weight

Cruise Speed: 20 Knots Kts. (23 MPH)

Max Speed: 26 Knots Kts. (30 MPH)

Water Capacity: 175 Gallons

Holding Tank: 60 Gal Gallons

Fuel Capacity: 350 Gal Gallons

Accommodations

Total Cabins: 2

Total Heads: 2

Engine Information

Engines: 2

Manufacturer: Volvo Penta

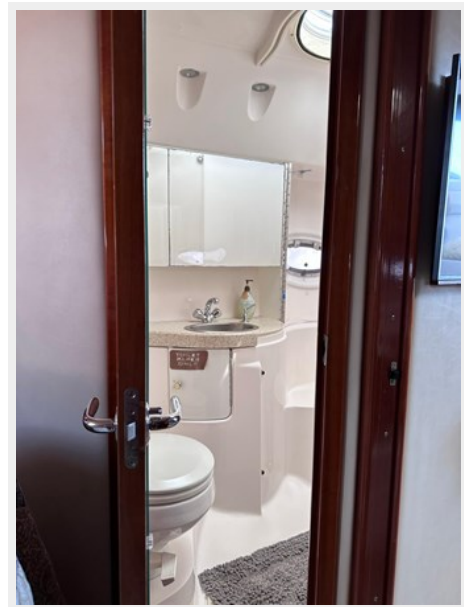
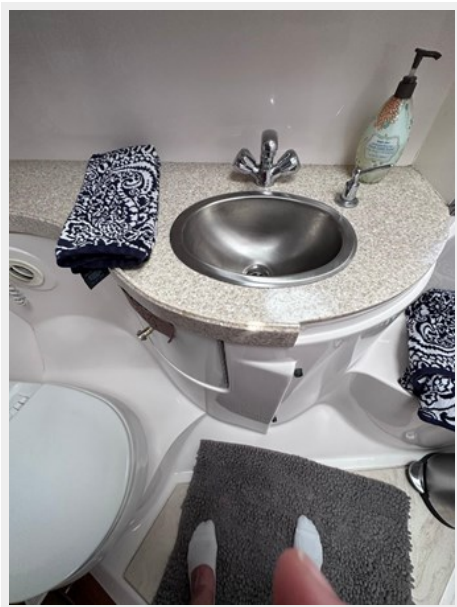
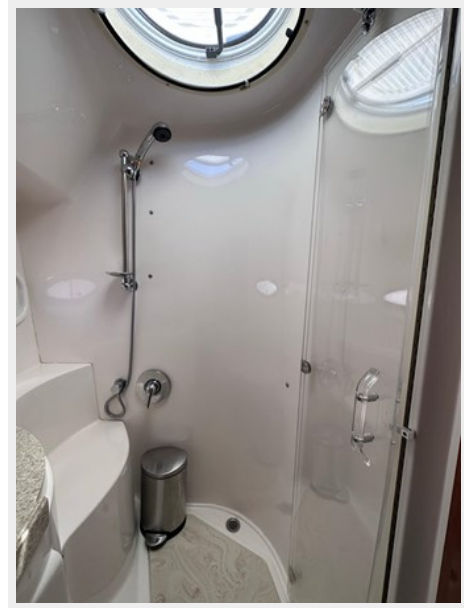
Fuel Type: Gas

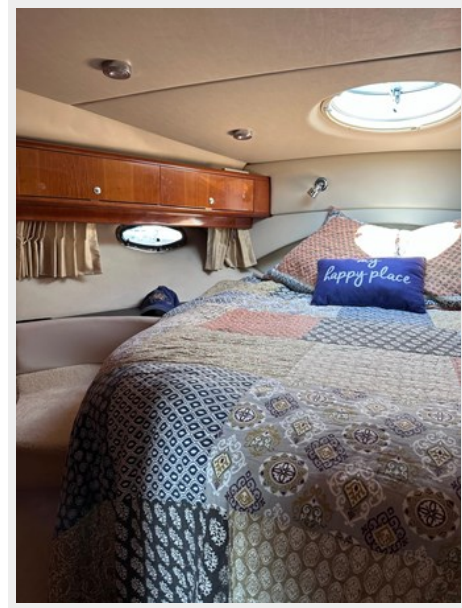
PHOTOS

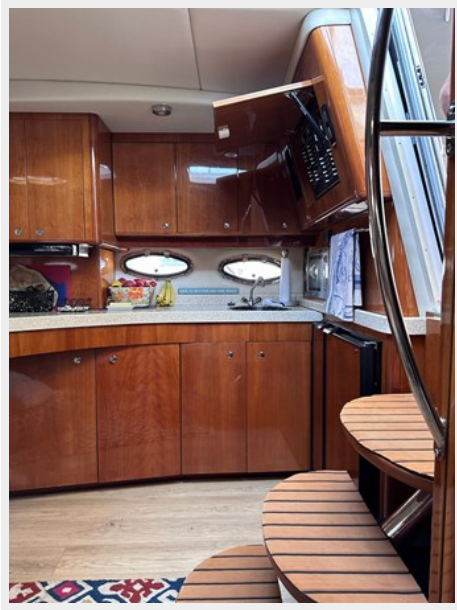


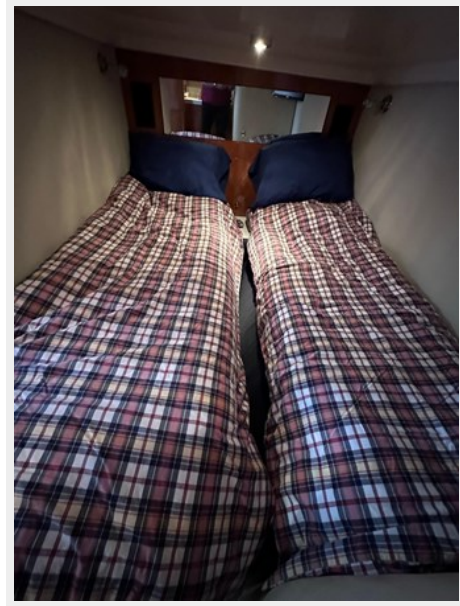


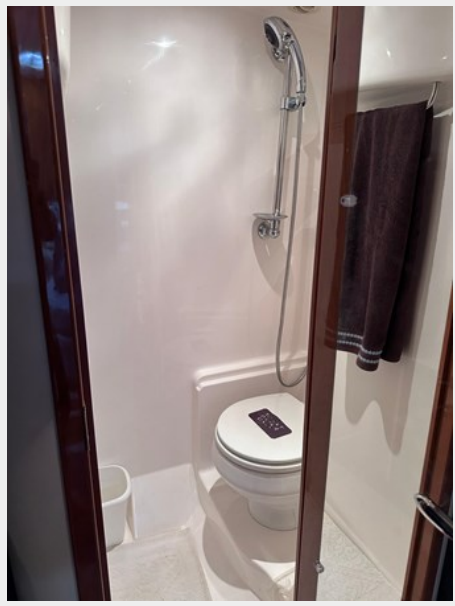






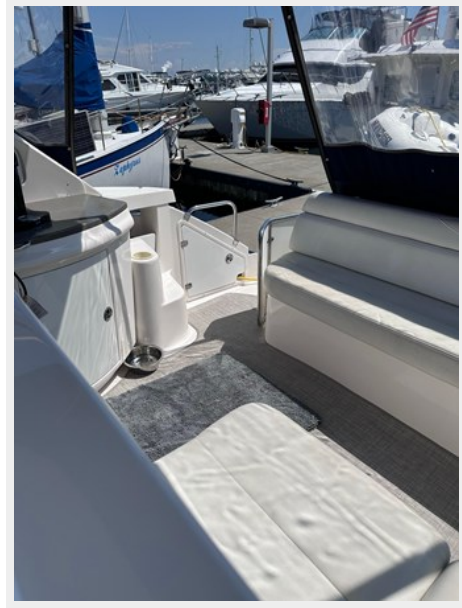


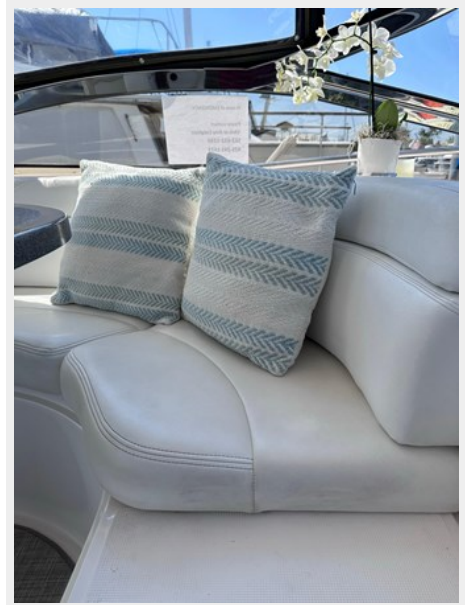






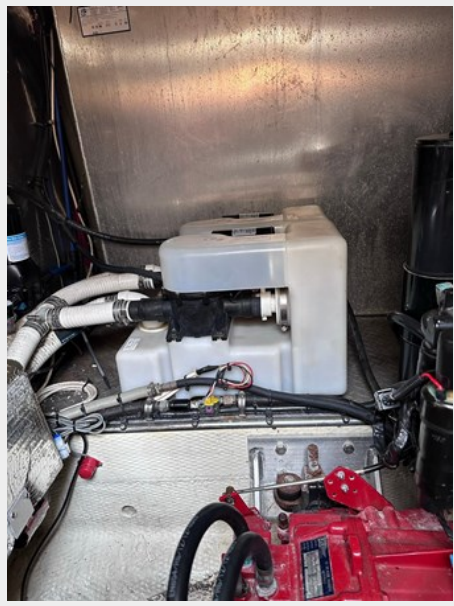


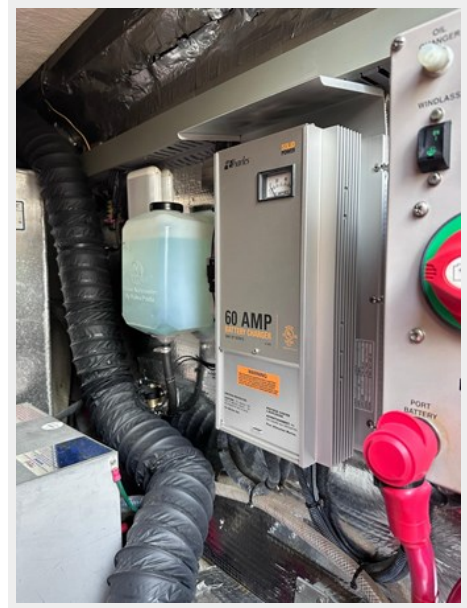


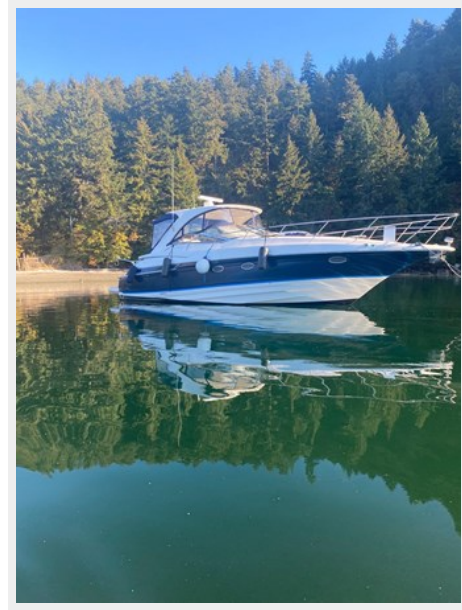












CONTACTS

Andrey Shestakov, leading yacht broker of the sales department of Shestakov Yacht Sales Inc. Shestakov Yacht Sales Inc., the official representative of the Miami/Fort Lauderdale FL headquarters.

Contact details

Email: andrey@shestakovyachtsales.com

Web: shestakovyachtsales.com/en/

Telephones

USA: +1(954)274-4435

Office hours

Monday – Saturday: **9:00 - 21:00** EDT

Sunday: **closed**

Address



Harbour Towne Marina, 850 NE 3rd St,
STE 213, Dania, FL 33004