

2001 CAROLINA CLASSIC 35 — CAROLINA CLASSIC



Builder: CAROLINA CLASSIC

Year Built: 2001

Model: Sport Fisherman

Price: \$189,000 USD

Location: United States

LOA: 35' (10.67m)

Beam: 13.41

Max Draft: 3' (0.91m)

Our experienced yacht broker, Andrey Shestakov, will help you choose and buy a yacht that best suits your needs 2001 Carolina Classic 35 — CAROLINA CLASSIC from our catalogue. Presently, at Shestakov Yacht Sales Inc., we have a wide variety of yachts available on our sale's list. We also work in close contact with all the big yacht manufacturers from all over the world.

If you would like to buy a yacht 2001 Carolina Classic 35 — CAROLINA CLASSIC or would like help answering any questions concerning purchasing, selling or chartering a yacht, please call +1(954)274-4435

TABLE OF CONTENTS

TABLE OF CONTENTS	2
SPECIFICATIONS	3
Overview	3
Basic Information	3
Dimensions	3
Speed, Capacities and Weight	4
Accommodations	4
Engine Information	4
PHOTOS	5
CONTACTS	12
Contact details	12
Telephones	12
Office hours	12
Address	12

SPECIFICATIONS

Overview

2001 Carolina Classic 35 Bring all offers! \$10,000 price improvement! Up for sale is a meticulously maintained 2001 Carolina Classic 35, the cleanest on the market. This beauty is a fisherman's dream and is loaded ready for your next adventure!

General Information: Model Year: 2001 Make: Carolina Classic Model: 35 Condition: Excellent Freshwater Usage: 90% Location: Eastlake area of Lake Union, Seattle Moorage: Gated and private moorage

Specifications: Length: 34 feet 9 inches Beam: 13 feet 6 inches Draft: 3 feet Weight: 25,000 pounds Fuel Capacity: Main tank 295 gallons, 2 saddle tanks 50 gal. each: 395 total. Water Capacity: 55 gallons

Engines: Power: Cummins 450 Diamond Series Hours: Approximately 1300 hours

Upgrades and Features: Electronics: Twin Garmin 8612 xsv screens Garmin VHF 4kw open array radar 1kw transducer Additional Features: 48-gallon Bluewater bait tank (removable) 15' outriggers Rocket launcher rod rack by Rudnick Manufacturing New side and rear curtains by Breezy Upholstery Custom exhaust risers to prevent water backflow into turbos Prop bearings replaced, Propspeed on props and rudders Lumitec underwater lights and spreader lights 4 electric sockets for downriggers/electric reels Bow and stern thrusters Simrad Autopilot

Maintenance: Turnkey condition Winter maintenance plan includes valve adjustment, aftercoolers servicing, and impeller replacement

Performance: No fuel flow meter; estimated fuel consumption: 0.7-0.8 miles per gallon Cruise speed: 22-24 knots at 2200 rpm Fast cruise: 26 knots WOT: 2600 RPM

Additional Information: Radar can fold back for travel or be removed for transportation on a low-boy Mechanical Cummins 450 Diamond Series diesels (no computer) Known for a solid ride and Carolina bow flare Versatile for lake, sound, and offshore fishing

Basic Information

Category: Sport Fisherman

Model Year: 2001

Year Built: 2001

Country: United States

Dimensions

LOA: 35' (10.67m)

Beam: 13.41

Max Draft: 3' (0.91m)

Speed, Capacities and Weight

Water Capacity: 55 Gallons

Fuel Capacity: 395 Gal Gallons

Accommodations

Total Heads: 1

Engine Information

Engines: 2

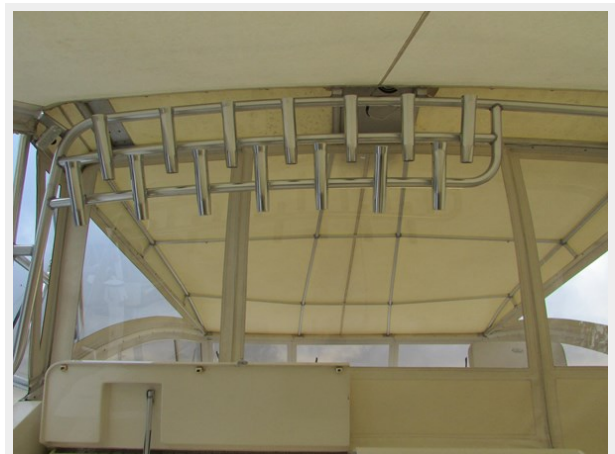
Manufacturer: Cummins

Fuel Type: Diesel

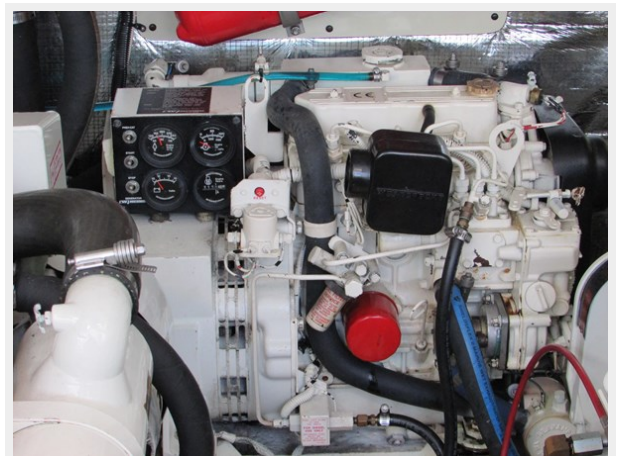
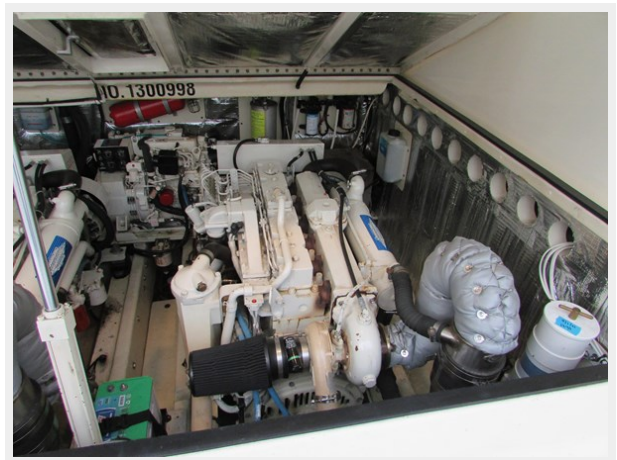
PHOTOS

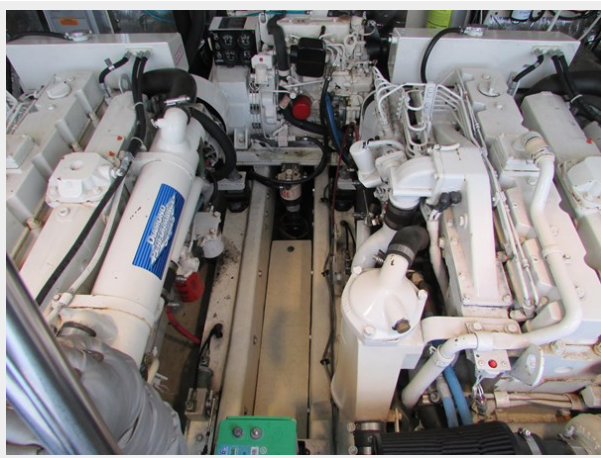














CONTACTS

Andrey Shestakov, leading yacht broker of the sales department of Shestakov Yacht Sales Inc. Shestakov Yacht Sales Inc., the official representative of the Miami/Fort Lauderdale FL headquarters.

Contact details

Email: andrey@shestakovyachtsales.com

Web: shestakovyachtsales.com/en/

Telephones

USA: +1(954)274-4435

Office hours

Monday – Saturday: **9:00 - 21:00** EDT

Sunday: **closed**

Address



Harbour Towne Marina, 850 NE 3rd St,
STE 213, Dania, FL 33004