

## DRAGONFLY — SILVER YACHTS



**Builder:** SILVER YACHTS

**Year Built:** 2009

**Model:** Motor Yacht

**Price:** PRICE ON APPLICATION

**Location:** France

**LOA:** 240' 6" (73.3mm)

**Beam:** 32.8

**Min Draft:** 7' 11" (2.4mm)

**Max Draft:** 8' 7" (2.6mm)

**Cruise Speed:** 18 Knots Kts. (21 MPH)

**Max Speed:** 25 Knots Kts. (29 MPH)

Our experienced yacht broker, Andrey Shestakov, will help you choose and buy a yacht that best suits your needs **DRAGONFLY — SILVER YACHTS** from our catalogue. Presently, at Shestakov Yacht Sales Inc., we have a wide variety of yachts available on our sale's list. We also work in close contact with all the big yacht manufacturers from all over the world.

If you would like to buy a yacht **DRAGONFLY — SILVER YACHTS** or would like help answering any questions concerning purchasing, selling or chartering a yacht, please call **+1(954)274-4435**

# TABLE OF CONTENTS

TABLE OF CONTENTS	2
SPECIFICATIONS	5
Overview	5
Basic Information	5
Dimensions	5
Speed, Capacities and Weight	5
Accommodations	6
Hull and Deck Information	6
Engine Information	6
PHOTOS	7
DFLY _YACHT_ SHALLOW-811-8	7
DFLY _YACHT_ -0192	7
DFLY _YACHT_ -811-2	7
DFLY _YACHT_ -811-7	7
DFLY CREW CABINS-8461	7
DFLY BRIDGE --4 (1) edited	7
DFLY CREW MESS-8215	8
DFLY CRUISING-811-7	8
DFLY DECK BEACH CLUB-3153	8
DFLY DECK BEACH CLUB-3159	8
DFLY DECK BEACH CLUB-3225 edited	8
DFLY DECK MAIN DECK AFT-3660	8
DFLY ENGINE ROOM-3290	9
DFLY ENGINE ROOM-3308	9
DFLY ENGINE ROOM-3346	9
DFLY ENGINE ROOM-3356	9
DFLY EXTERIOR SUNDECK-4516	9
DFLY EXTERIOR SUNDECK-4532	9

---

DFLY EXTERIOR SUNDECK-7854	10
DFLY EXTERIOR SUNDECK-7938	10
DFLY GALLEY-7490	10
DFLY INTERIOR GC1-1596	10
DFLY INTERIOR GC1-1600	10
DFLY INTERIOR GC1-1628	10
DFLY INTERIOR GC2-	11
DFLY INTERIOR GC2-1525	11
DFLY INTERIOR GC2-1582	11
DFLY INTERIOR GC4-1563	11
DFLY INTERIOR GC4-1579	11
DFLY INTERIOR MASTER CABIN-	11
DFLY INTERIOR MASTER CABIN-5336	12
DFLY INTERIOR MASTER CABIN-5276	12
DFLY INTERIOR MASTER HIS BATHROOM-5269	12
DFLY INTERIOR MASTER HER BATHROOM-5118	12
DFLY INTERIOR TV ROOM-4866	12
DFLY INTERIOR VIP1-9737	12
DFLY INTERIOR VIP1-9744	13
DFLY INTERIOR VIP1-9761	13
DFLY INTERIOR VIP2-1667	13
DFLY INTERIOR VIP2-1691	13
DFLY INTERIOR VIP3-8265	13
DFLY INTERIOR VIP3-8271	13
DFLY MAIN SALON-2155	14
DFLY MAIN SALON-2142	14
DFLY MAIN SALON-5551	14
DFLY MAIN SALON-5555	14
DFLY MAIN SALON-5570	14

---

---

DFLY OUTDOOR CINEMA-811-5	14
DFLY OUTDOOR CINEMA-3757	15
DFLY OUTDOOR CINEMA-811-6	15
DFLY OWNERS AFT-4662	15
DFLY OWNERS AFT-2364	15
DFLY STAIRS AND CORRIDORS-7553	15
DFLY OWNERS SALON-	15
DFLY TENDERS AND TOYS-811-2	16
DFLY TENDERS AND TOYS-811-18	16
DFLY-CREW-CABINS-EDIT	16
HZZMOZZ-175	16
CONTACTS	17
Contact details	17
Telephones	17
Office hours	17
Address	17

---

# SPECIFICATIONS

---

## Overview

---

- Extremely well maintained by an experienced owner and diligent crew
- 2 main engines major overhaul and 3 new generators recently installed (2022)
- Now featuring a vast battery bank (384kw/h), dramatically reducing the fuel burn and allowing up to 8hrs in 'silent ship' mode whilst at anchor
- Max speed of up to 25 knots
- Incredibly low fuel consumption at cruising speed (420 l/hr at 18 knots)
- A shallow draft provides access to areas other yachts of a similar size cannot get close to
- Same owner for the past 13 years
- Touch and Go Helipad – 3,000kg MTOW

## Basic Information

---

**Category:** Motor Yacht

**Model Year:** 2009

**Year Built:** 2009

**Country:** France

## Dimensions

---

**LOA:** 240' 6" (73.3mm)

**Beam:** 32.8

**Min Draft:** 7' 11" (2.4mm)

**Max Draft:** 8' 7" (2.6mm)

## Speed, Capacities and Weight

---

**Cruise Speed:** 18 Knots Kts. (21 MPH)

**Cruise Speed Range:** 4358

**Max Speed:** 25 Knots Kts. (29 MPH)

**Gross Tonnage:** 833 Pounds

**Water Capacity:** 19932 Gallons

**Fuel Capacity:** 29953.94 Gal Gallons

---

## Accommodations

---

**Total Cabins:** 8

**Sleeps:** 18

**Crew Cabin:** 18

---

## Hull and Deck Information

---

**Hull Material:** Aluminum

**Deck Material:** Teak

**Hull Configuration:** Monohull

**Hull Designer:** Espen Oeino

**Exterior Designer:** Espen Oino International **Interior Designer:** Vain Interiors / Andreas Holnburger

---

## Engine Information

---

**Engines:** 2

**Manufacturer:** MTU

**Fuel Type:** Diesel



# PHOTOS

**DFLY\_YACHT\_SHALLOW-811-8**



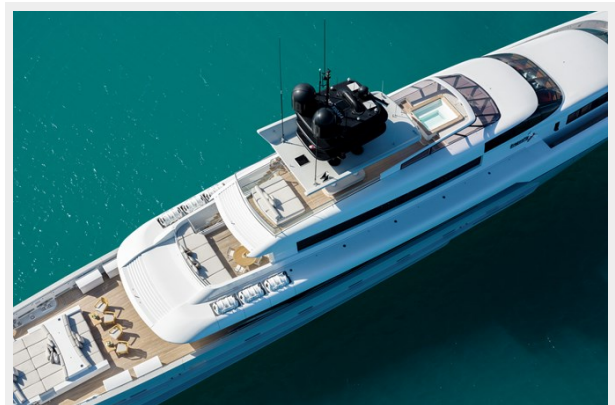
**DFLY\_YACHT\_-0192**



**DFLY\_YACHT\_-811-2**



**DFLY\_YACHT\_-811-7**



**DFLY BRIDGE -4 (1) edited**



**DFLY CREW CABINS-8461**





**DFLY CREW MESS-8215**



**DFLY CRUISING-811-7**



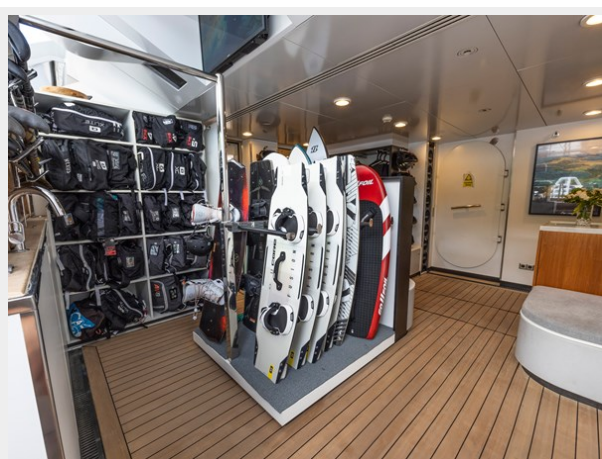
**DFLY DECK BEACH CLUB-3153**



**DFLY DECK BEACH CLUB-3159**



**DFLY DECK BEACH CLUB-3225 edited**



**DFLY DECK MAIN DECK AFT-3660**





**DFLY ENGINE ROOM-3290**



**DFLY ENGINE ROOM-3308**



**DFLY ENGINE ROOM-3346**



**DFLY ENGINE ROOM-3356**



**DFLY EXTERIOR SUNDECK-4516**



**DFLY EXTERIOR SUNDECK-4532**



**DFLY EXTERIOR SUNDECK-7854**



**DFLY EXTERIOR SUNDECK-7938**



**DFLY GALLEY-7490**



**DFLY INTERIOR GC1-1596**



**DFLY INTERIOR GC1-1600**



**DFLY INTERIOR GC1-1628**





**DFLY INTERIOR GC2-**



**DFLY INTERIOR GC2-1525**



**DFLY INTERIOR GC2-1582**



**DFLY INTERIOR GC4-1563**



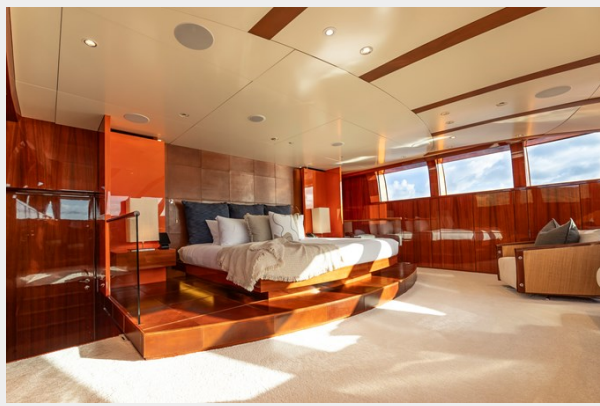
**DFLY INTERIOR GC4-1579**



**DFLY INTERIOR MASTER CABIN-**



**DFLY INTERIOR MASTER CABIN-5276**



**DFLY INTERIOR MASTER CABIN-5336**



**DFLY INTERIOR MASTER HER BATHROOM-5118**



**DFLY INTERIOR MASTER HIS BATHROOM-5269**



**DFLY INTERIOR TV ROOM-4866**



**DFLY INTERIOR VIP1-9737**





**DFLY INTERIOR VIP1-9744**



**DFLY INTERIOR VIP1-9761**



**DFLY INTERIOR VIP2-1667**



**DFLY INTERIOR VIP2-1691**



**DFLY INTERIOR VIP3-8265**



**DFLY INTERIOR VIP3-8271**





**DFLY MAIN SALON-2142**



**DFLY MAIN SALON-2155**



**DFLY MAIN SALON-5551**



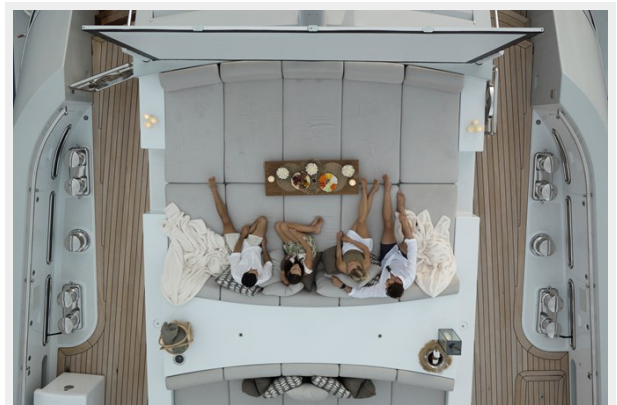
**DFLY MAIN SALON-5555**



**DFLY MAIN SALON-5570**



**DFLY OUTDOOR CINEMA-811-5**



### DFLY OUTDOOR CINEMA-811-6



### DFLY OUTDOOR CINEMA-3757



### DFLY OWNERS AFT-2364



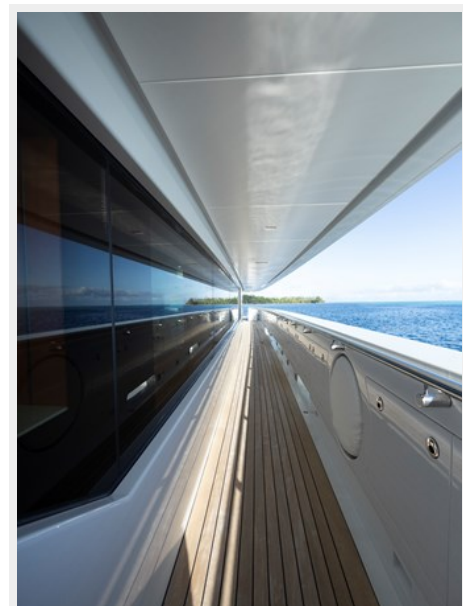
### DFLY OWNERS AFT-4662



### DFLY OWNERS SALON-



### DFLY STAIRS AND CORRIDORS-7553

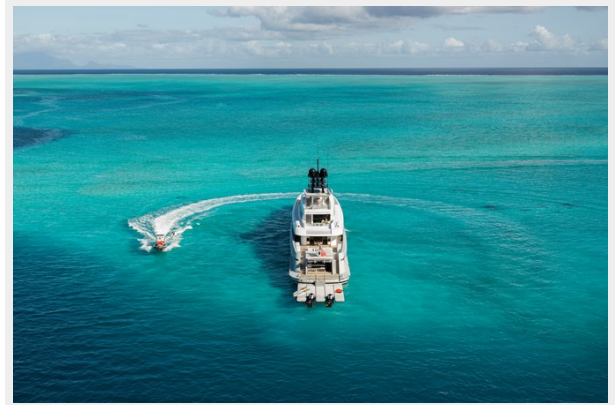




### DFLY TENDERS AND TOYS-811-2



### DFLY TENDERS AND TOYS-811-18



### DFLY-CREW-CABINS-EDIT



### HZZMOZZ-175



# CONTACTS

---

Andrey Shestakov, leading yacht broker of the sales department of Shestakov Yacht Sales Inc. Shestakov Yacht Sales Inc., the official representative of the Miami/Fort Lauderdale FL headquarters.

## Contact details

---

Email: [andrey@shestakovyachtsales.com](mailto:andrey@shestakovyachtsales.com)

Web: [shestakovyachtsales.com/en/](http://shestakovyachtsales.com/en/)

## Telephones

---

USA: +1(954)274-4435

## Office hours

---

Monday – Saturday: **9:00 - 21:00** EDT

Sunday: **closed**

## Address

---



Harbour Towne Marina, 850 NE 3rd St,  
STE 213, Dania, FL 33004