

## LADY MARO — PRESTIGE



**Судостроитель:** PRESTIGE

**Год постройки:** 2016

**Модель:** Крейсер

**Цена:** \$699,000 USD

**Местонахождение:** United States

**Длина общая:** 50' (15.24m)

**Ширина:** 14.75

**Макс. осадка:** 3' 4" (1.02m)

Купить **Lady Maro — PRESTIGE** а также выбрать подходящую вам яхту из нашего каталога яхт вам поможет опытный яхтенный брокер Андрей Шестаков. На сегодняшний день компания **Shestakov Yacht Sales Inc.** имеет большое количество яхт в собственном списке продаж, а также тесно сотрудничает со всеми крупными яхтенными производителями по всему миру.

Для того чтобы купить яхту **Lady Maro — PRESTIGE** а также проконсультироваться по любому вопросу связанному с покупкой, продажей, чартером яхт позвоните по телефону **+7(918)465-66-44**.

# ОГЛАВЛЕНИЕ

---

ОГЛАВЛЕНИЕ	2
ХАРАКТЕРИСТИКИ	5
Обзор	5
Основная информация	7
Размеры	8
Скорость, вместимость и масса	8
Размещение	8
Корпус и палуба	8
Информация о двигателе	8
ФОТОГРАФИИ	9
Files-847	9
Files-845	9
Files-844	9
Files-846	9
Files-809	9
Files-848	9
Files-849	10
Files-851	10
Files-852	10
Files-850	10
Files-820	10
Files-821	10
Files-825	11
Files-822	11
Files-823	11
Files-826	11
Files-824	11
Files-828	11

Files-827	12
Files-829	12
Files-830	12
Files-831	12
Files-832	12
Files-833	12
Files-834	13
Files-843	13
Files-836	13
Files-835	13
Files-837	13
Files-838	13
Files-839	14
Files-840	14
Files-841	14
Files-842	14
Files-819	14
Files-818	14
Files-810	15
Files-811	15
Files-812	15
Files-813	15
Files-815	15
Files-814	15
Files-816	16
Files-817	16
КОНТАКТЫ	17
Контактная информация	17
Телефоны	17

---

Время работы	17
Адрес	17

# ХАРАКТЕРИСТИКИ

## Обзор

*Always kept in the primarily fresh waters of the Chesapeake Bay and Potomac River, this Prestige 500s has low hours (350), countless lighting upgrades, and features a diesel heater which eliminates the need for any winterization. Recently serviced and resealed IPS drives as well as reconditioned propellers make this boat ready for immediate delivery to its next owner.*

Prestige is known for maximizing space and creating functional, yet stylish layouts. Perhaps the 500s is their best example of that philosophy. In addition to a three stateroom / two head layout, aft galley, and large salon, the boat also boasts a private entrance to the master cabin which is typically reserved for much larger yachts. This space is created, in part, by the Volvo Penta IPS system. Not only does it allow for incredibly precise docking, but it allows the engine room to be moved further aft in the boat, resulting in larger cabins than most other boats in this class.

A more complete list is coming soon, but below are notable **options, features, and upgrades**:

- Volvo Penta IPS 600s with docking and high speed mode (350 hours)
- New Dometic Chiller (2023)
- Diesel heater for both wintertime heat and automatic heating of the engine room – this prevents any need for winterization (2021)
- Upgraded Lumitec under water lights (2022)
- Blue courtesy foredeck lights (2022)
- Exterior 110V AC outlets added – 6x (2022)
- IPS shafts resealed (2024)
- IPS units aligned (2024)
- Propellers reconditioned (2024)
- Spare propeller set
- IPS service (2024)
  - Transmission fluid
  - Transmission filter
- Bose Audio system in master and salon
- Bow thruster
- Washer/Dryer combo
- Electric blinds in salon
- Fresh water washdown pump
- Tender garage
- Grey oak interior
- Hydraulic platform
- Ice maker
- Cockpit joystick station with bow thruster control

- **Teak decks throughout**
- **Tropical air conditioning upgrade – 69,000 BTU**

In addition to the **extended hydraulic platform**, the transom features a **fixed section** which makes boarding easy even if a tender is stored on the platform. A **hot and cold fresh water shower wand** is great for rinsing off after a swim while the **freshwater wash down** helps with washing down the deck or tender. A **city water inlet** allows the freshwater tank and pump to be bypassed and provides constant pressure without having to continually refill the tanks. In addition to the platform, the tender can be concealed in the **tender garage**. The garage, coupled with a hydraulic platform, makes it very easy to deploy the tender. Two **110V AC outlets** have been added which are great for extra lighting, or a compressor to inflate water toys.

The cockpit is entered through a **spring loaded, plexiglass gate**. When desired, the cockpit can be covered with an **electric sunshade** that stops at the transom and truly covers the entire cockpit. Centerline, **u-shaped seating** is situated around a natural **teak table**, perfect for al fresco entertaining. The table is on a **high-low pedestal** that, when lowered, **converts to a sun pad** with the help of a filler cushion. **Engine room access** is convenient through two hatches, port and starboard. A **center cockpit hatch** opens to the ceiling of the tender garage, which is convenient when storing lines and fenders. **Overhead lights** and **speakers** are housed in the hardtop and two **extra 110V AC** outlets have been added for extra convenience. A hidden **cockpit joystick station** also features a **bow thruster control** for easy docking when backing into a slip or coming side-to.

The **salon doors** are cleverly designed to not only enter from the starboard side but can also be slid so access is directly into the galley, on the port side. Immediately to starboard is the **private entrance to the master** – a privacy feature typically reserved for much larger boats. The port side, **island-style galley** features all the amenities of home: **three-burner range, microwave, refrigerator/freezer, stainless steel sink, and plenty of storage.**

The **salon** is forward and boasts an incredible amount of seating for a 50' boat. A **C-shaped sofa arrangement** is flanked by a **port side facing sofa** to create true wrap around seating throughout the entire salon. A **BOSE surround sound** system floods the entire galley and salon with music driven off a modern **Fusion stereo**. A **high-low, leather topped table** serves as a perfect coffee table but also folds out when a true dining table is needed. **Opening windows** on both sides and a massive **retractable sunroof** flood the salon with natural light and air when desired. Forward, opposite the helm, is a **cleverly concealed TV** that hinges up for easy viewing.

The **helm** features a full complement of electronics, switches, and equipment that will satisfy even the most demanding captains. Upgraded, **dual Raymarine Axiom** units feature a lightning-fast processor for quick operation and chart redraws. The **autopilot controller** is conveniently located in between the chart plotters, which makes longer trips much more comfortable. The Prestige, **leather wrapped steering wheel** is adjustable whether the captain is standing or sitting. A salon **thermostat** is conveniently located at the helm to easily change the temperature while driving. Other equipment at the captain's disposal include, but aren't limited to: **anchor**

**chain counter, Volvo Penta engine display, IPS joystick, throttles, bow thruster, trim tab controls, and VHF.**

The **master stateroom** houses a **centerline bed** situated against the aft bulkhead, flanked on both sides by **nightstands and reading lights**. A **TV with BOSE surround sound** is mounted on the forward bulkhead while a **dresser** is situated to starboard, and **settee** is found on the port side, forward of the large **hanging closet**. Large hull side windows with **opening portholes** and shades give the owner the option of complete privacy, natural light, and cross ventilation. Forward is the master head with a **full stand-up shower, mirrored medicine cabinet, and basin style sink**. Plenty of storage is found under the countertop as well.

Forward in the boat is the **VIP stateroom**. True to Prestige's ability to maximize space, the bed, although it sits against the forward bulkhead, is easy to make with a **near complete walk around**. An overhead **deck hatch** can be opened for fresh air and also features a screen as well as black out shades. The stateroom has it's own dedicated **Fusion stereo and TV**. A port side **vanity** can also serve as a **desk** and comes complete with an adjustable **reading light**. Large hanging closets are found aft, on either side.

On the port side of the boat is the **guest stateroom** with **side-by-side berths**. Like all the other staterooms, it houses a hull side window with **opening porthole, reading lights, overhead lights, large closet, and TV**. Opposite the guest stateroom is the day head. **Shower doors** cleverly fold out of the way when not in use to maximize the floorspace of the head. A **basin style sink** sits under **mirrored medicine cabinets** and also features under counter storage.

Finally, the **engine room** is easily accessed through two hatches in the cockpit. Dual **Volvo Penta IPS 600s** propel the boat while an **Onan 11KW generator** provide onboard power for AC systems. The IPS 600s are the original IPS model that debuted in 2006 and have been truly perfected to become one of the best engine/drive packages available. All **strainers and thru-hulls** are conveniently located for easy access. The boat air conditioning features a **chilled water loop Dometic system**. This is far superior than Condaria units that have give chilled loop air conditions a bad name. Pods are accessed in a separate compartment, aft of the engine room, further reducing noise in the salon.

\*The boat is located offsite, please call ahead for showings\*

## Основная информация

**Тип судна:** Крейсер

**Подкатегория:** Express

**Модельный год:** 2017

**Год постройки:** 2016

**Страна:** United States

## Размеры

---

Длина общая: 50' (15.24mm)

Ширина: 14.75

Макс. осадка: 3' 4" (1.02mm)

## Скорость, вместимость и масса

---

Вместимость воды: 168 Gallons

Вместимость сточного бака: 32 Gal  
Gallons

Объем топливного бака: 344 Gal Gallons

## Размещение

---

Всего кают: 3

## Корпус и палуба

---

Материал корпуса: Fiberglass Sandwich    Материал палубы: Fiberglass Sandwich

Комплектация корпуса: Modified V-Hull

## Информация о двигателе

---

Двигатели: 2

Производитель: Volvo Penta

Тип двигателя: Inboard

Тип топлива: Diesel



# ФОТОГРАФИИ

Files-847



Files-845



Files-844



Files-846



Files-809



Files-848



**Files-849**



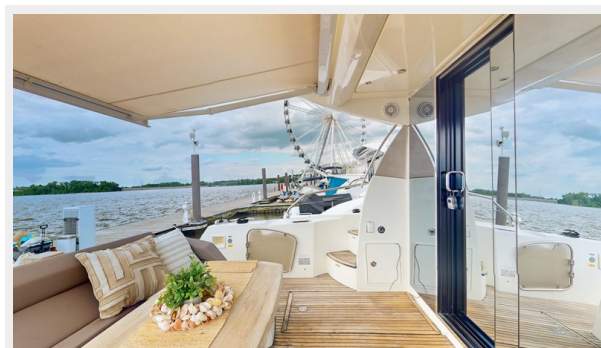
**Files-851**



**Files-852**



**Files-850**



**Files-820**



**Files-821**



**Files-825**



**Files-822**



**Files-823**



**Files-826**



**Files-824**



**Files-828**



**Files-827**



**Files-829**



**Files-830**



**Files-831**



**Files-832**



**Files-833**



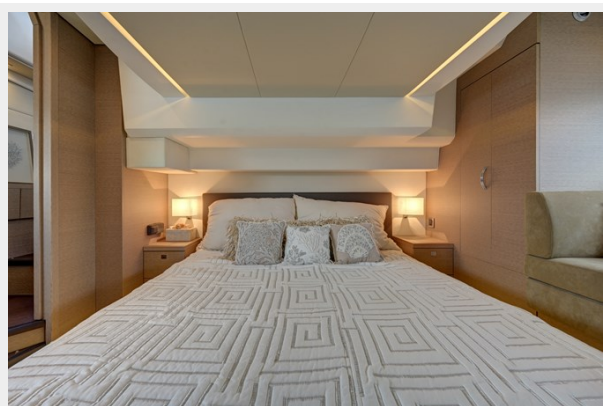
**Files-834**



**Files-843**



**Files-836**



**Files-835**



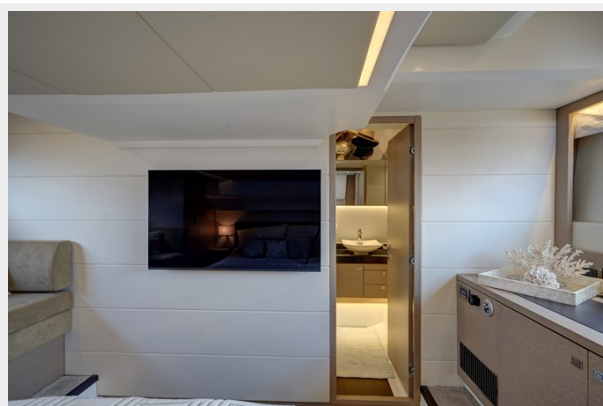
**Files-837**



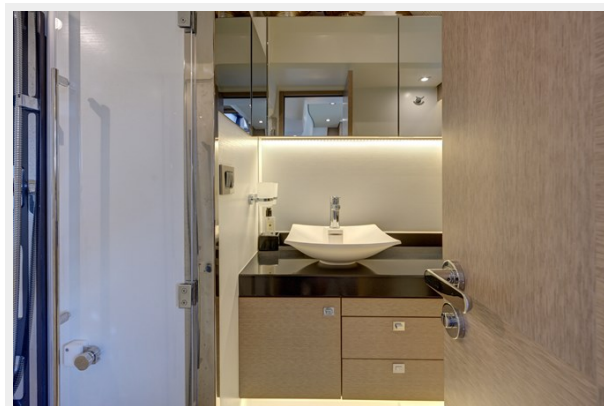
**Files-838**



**Files-839**



**Files-840**



**Files-841**



**Files-842**



**Files-819**



**Files-818**



**Files-810**



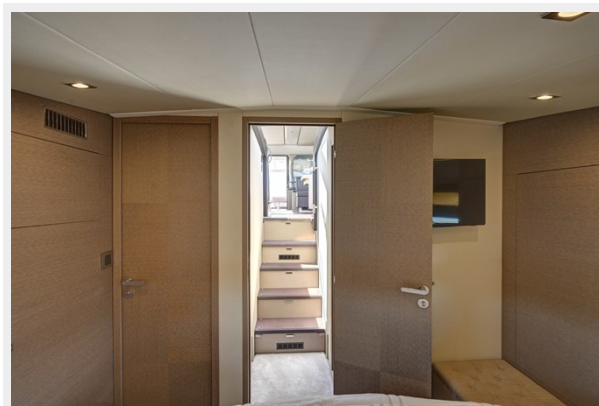
**Files-811**



**Files-812**



**Files-813**



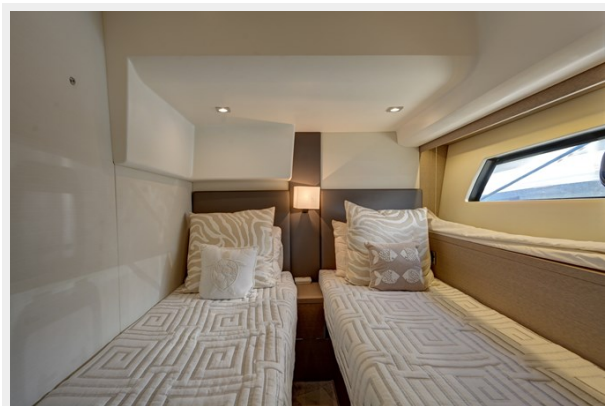
**Files-815**



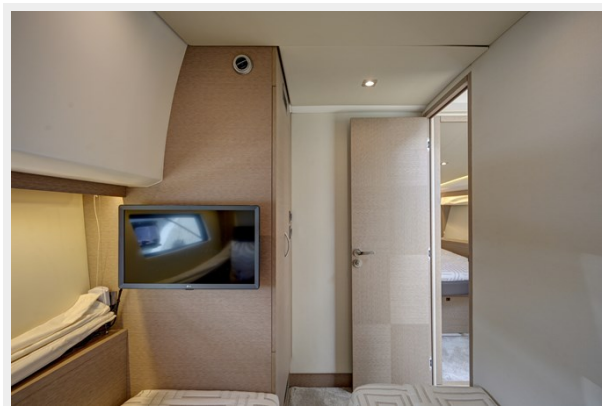
**Files-814**



**Files-816**



**Files-817**





# КОНТАКТЫ

---

Андрей Шестаков (Andrey Shestakov) – ведущий яхтенный брокер отдела продаж яхт и судов компании Shestakov Yacht Sales Inc. Официальный представитель Shestakov Yacht Sales Inc. для русскоговорящих клиентов в центральном офисе компании в Майами/Форт Лодердейл/Флорида/США.

## Контактная информация

---

Email: [andrey@shestakovyachtsales.com](mailto:andrey@shestakovyachtsales.com)

Web: [shestakovyachtsales.com](http://shestakovyachtsales.com)

## Телефоны

---

Краснодарский край: **+7(918)465-66-44**

США, Майами, Флорида: **+1(954)274-4435**

## Время работы

---

Понедельник – Суббота: **9:00 - 21:00**  
EDT

Воскресенье: **Закрито**

## Адрес

---



Harbour Towne Marina, 850 NE 3rd St,  
STE 213, Dania, FL 33004